

Amino acid profiles and bio-potentiality of hydrolysates obtained from comb pen shell (*Atrina pectinata*) viscera using subcritical water hydrolysis

Hee-Jeong Lee, Vikash Chandra Roy, Truc Cong Ho, Jin-Seok Park, Yu-Rin Jeong, Seung-Chan Lee, Sung-Yeol Kim, Byung-Soo Chun*

Supplementary file

Table S1. Proximate composition of lyophilized *Atrina pectinata* powder

composition	Content (%)
	<i>A. pectinata</i>
Crude lipid	9.60 ± 0.13
Crude protein	60.70 ± 0.11
Moisture	2.50 ± 0.02
Ash	17.20 ± 0.05
Carbohydrate	9.98 ± 0.05

Values are expressed as mean ± SD.

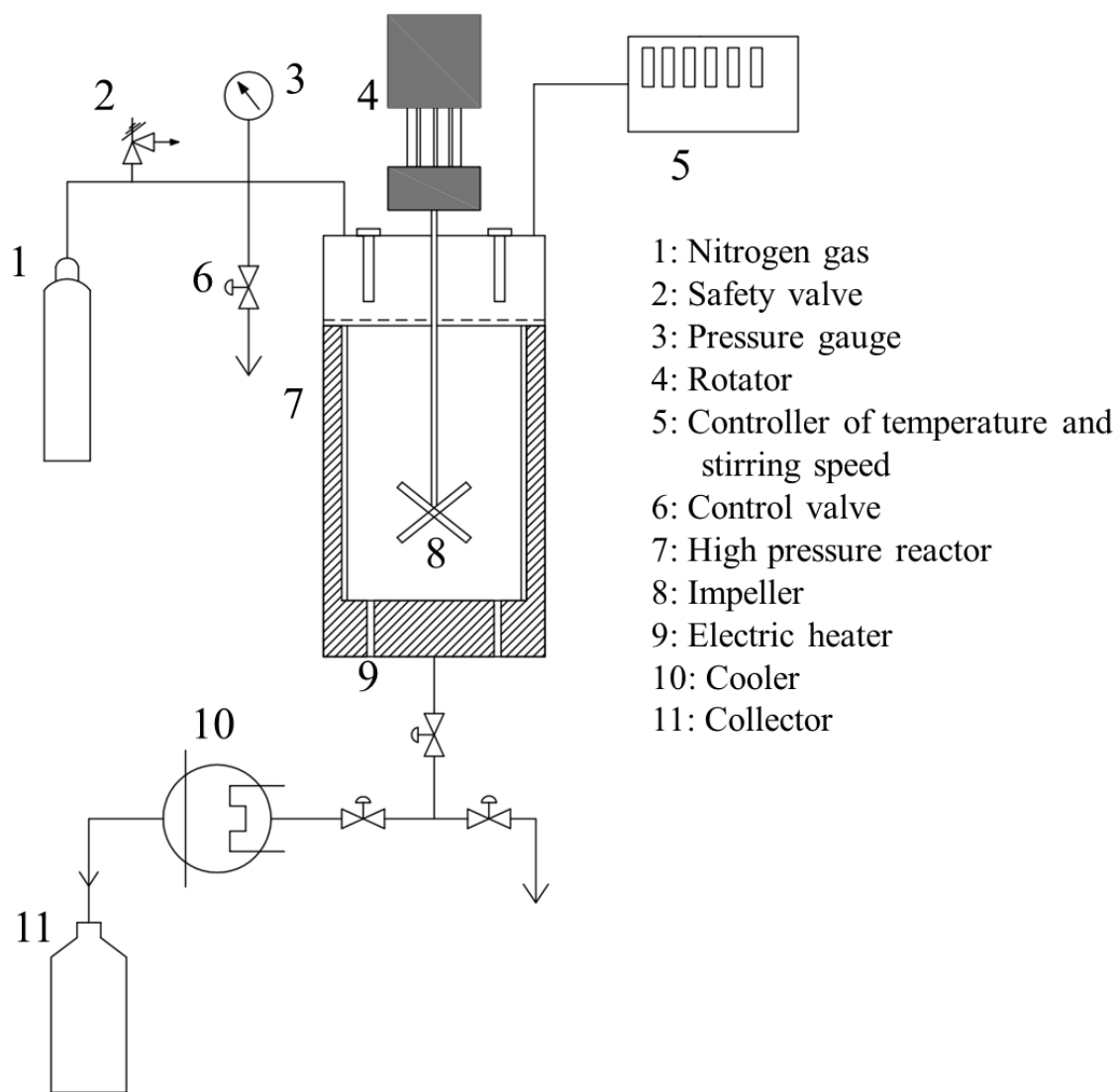


Figure S1. Schematic diagram of laboratory scale subcritical water hydrolysis system used in this experiment

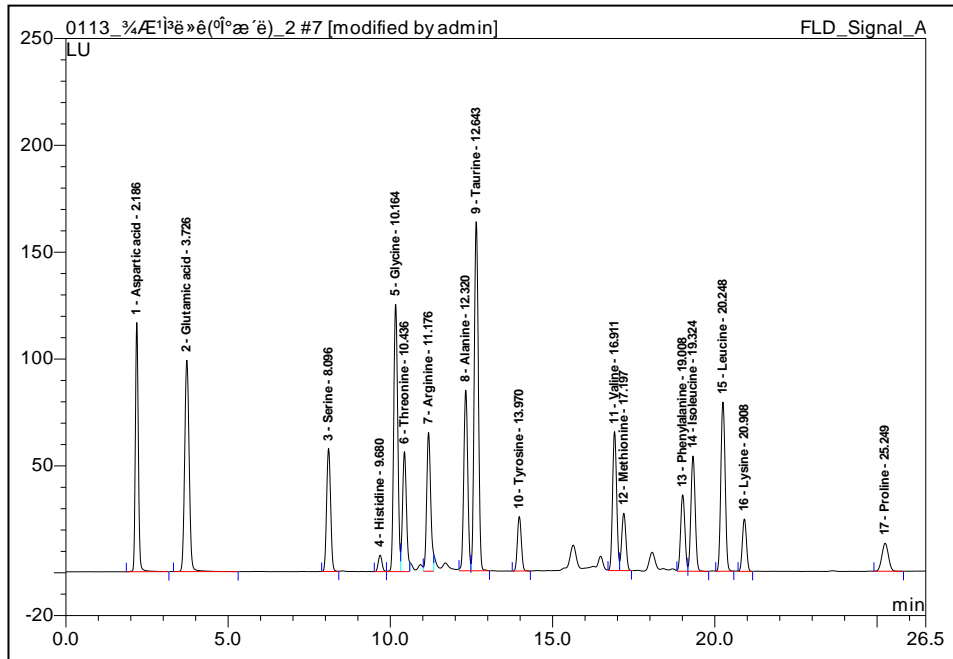


Figure S2. Chromatogram of total amino acids from the raw *A. pectinata* powder

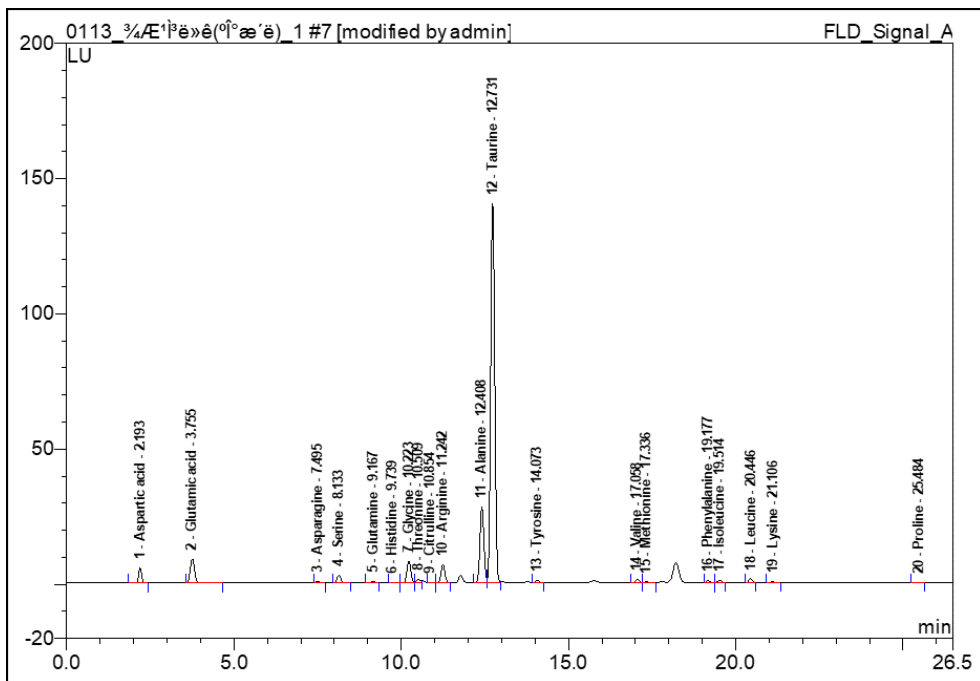
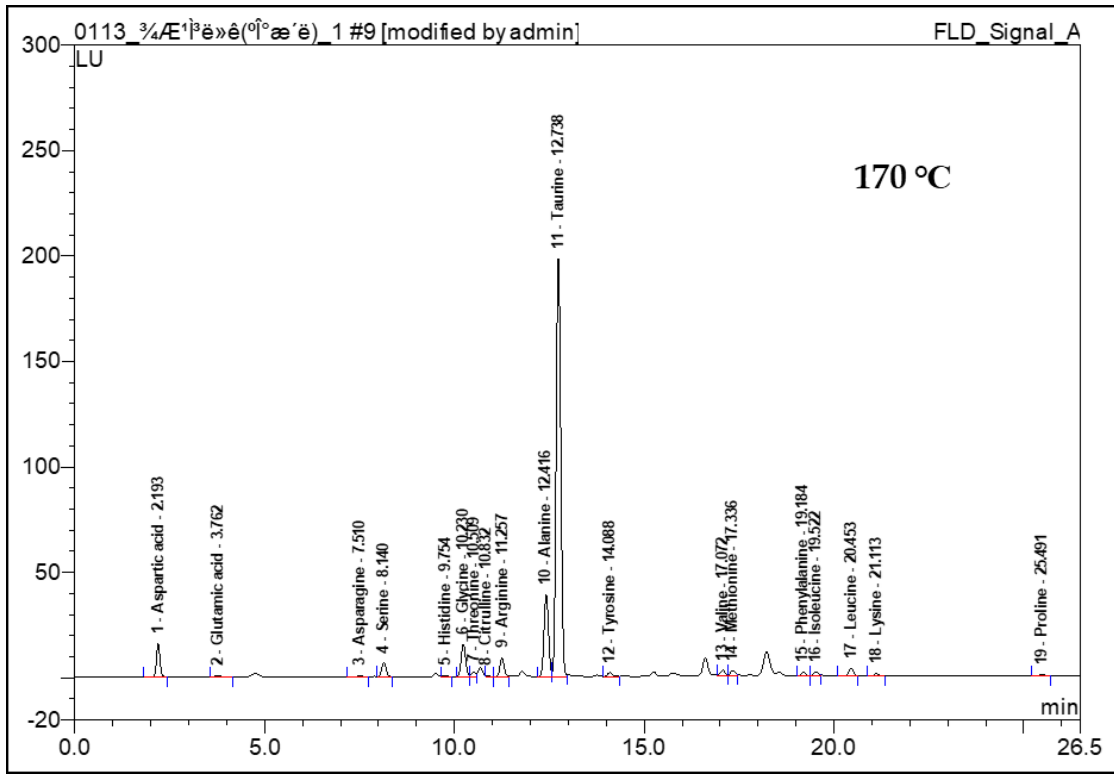
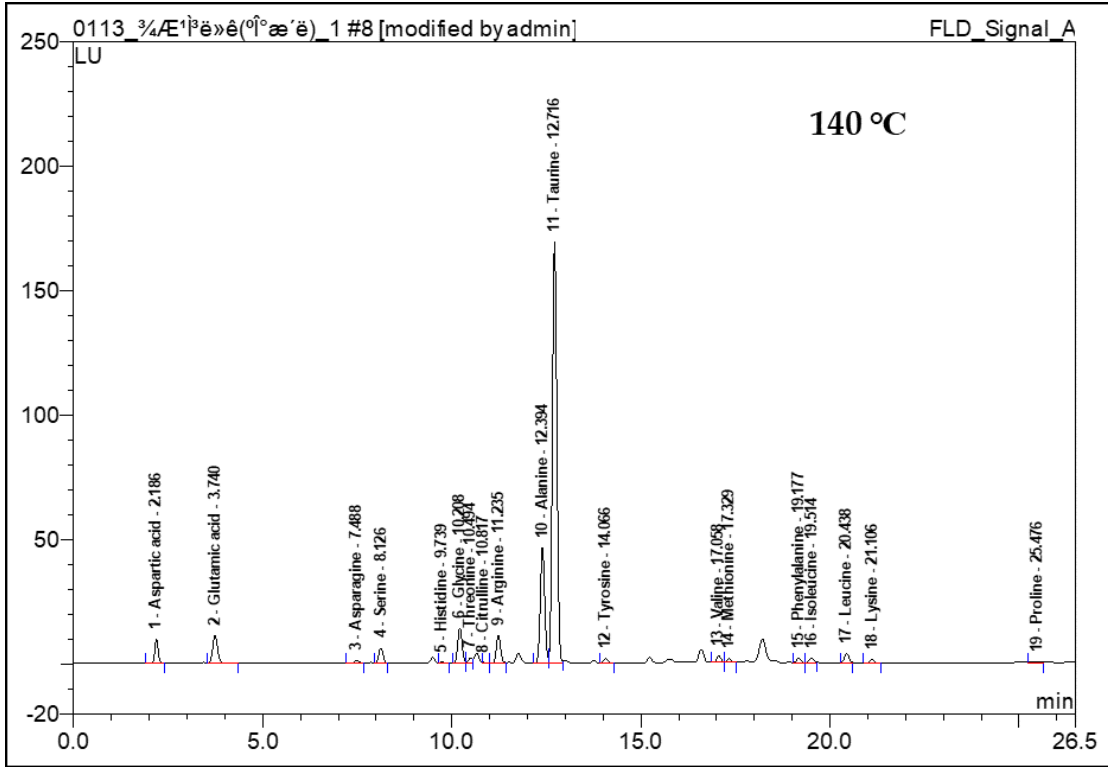
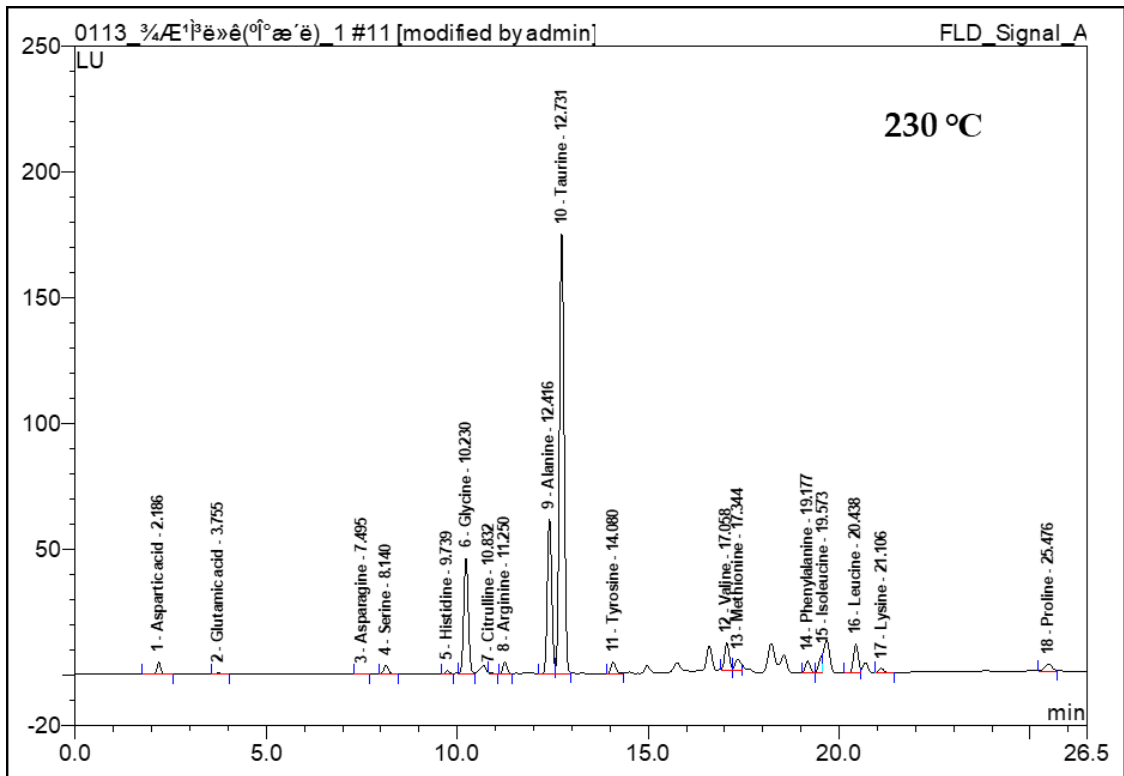
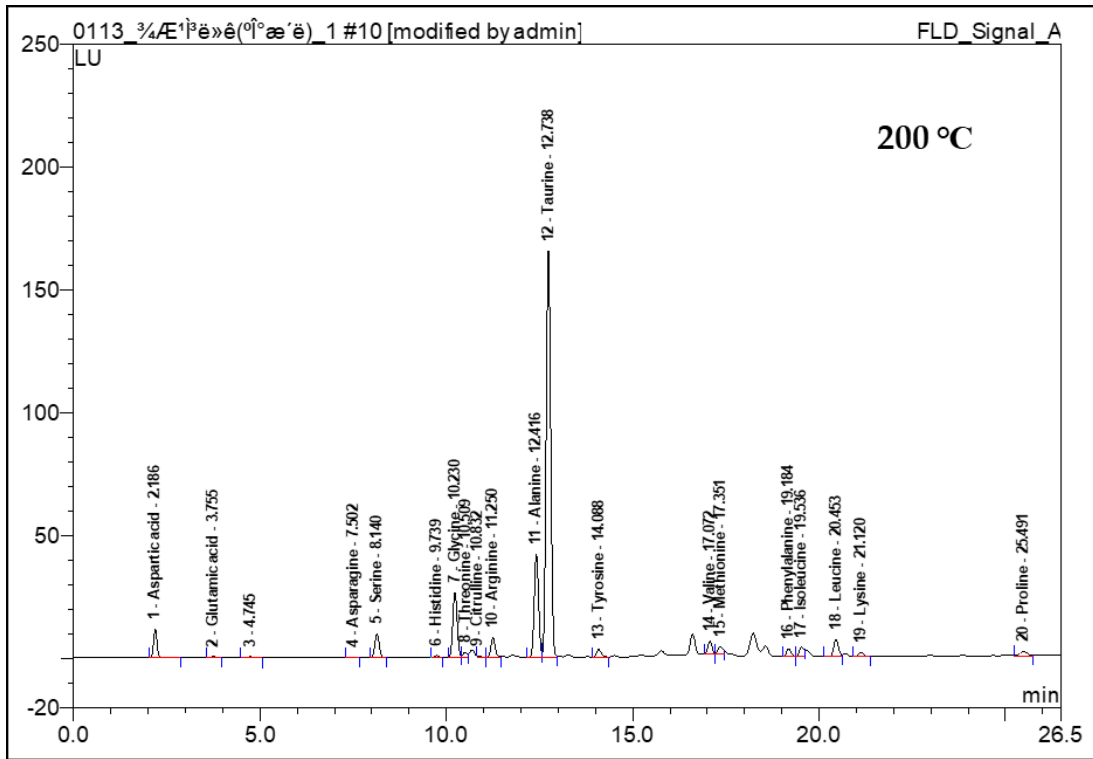


Figure S3. Chromatogram of free amino acids from the raw *A. pectinata* powder





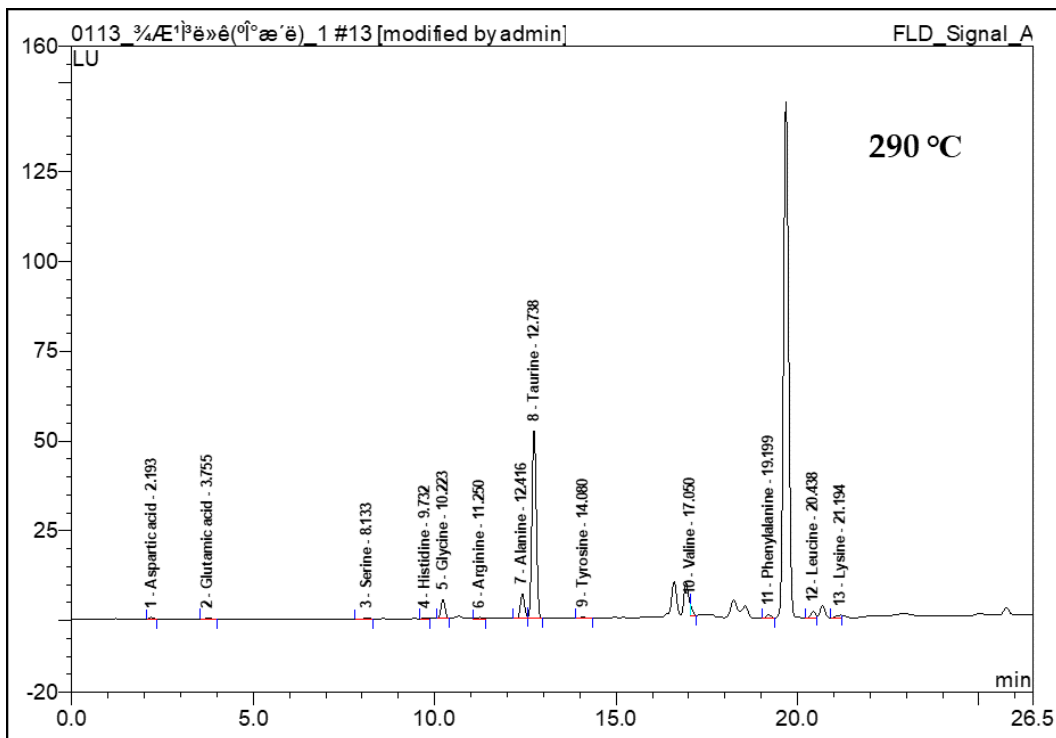
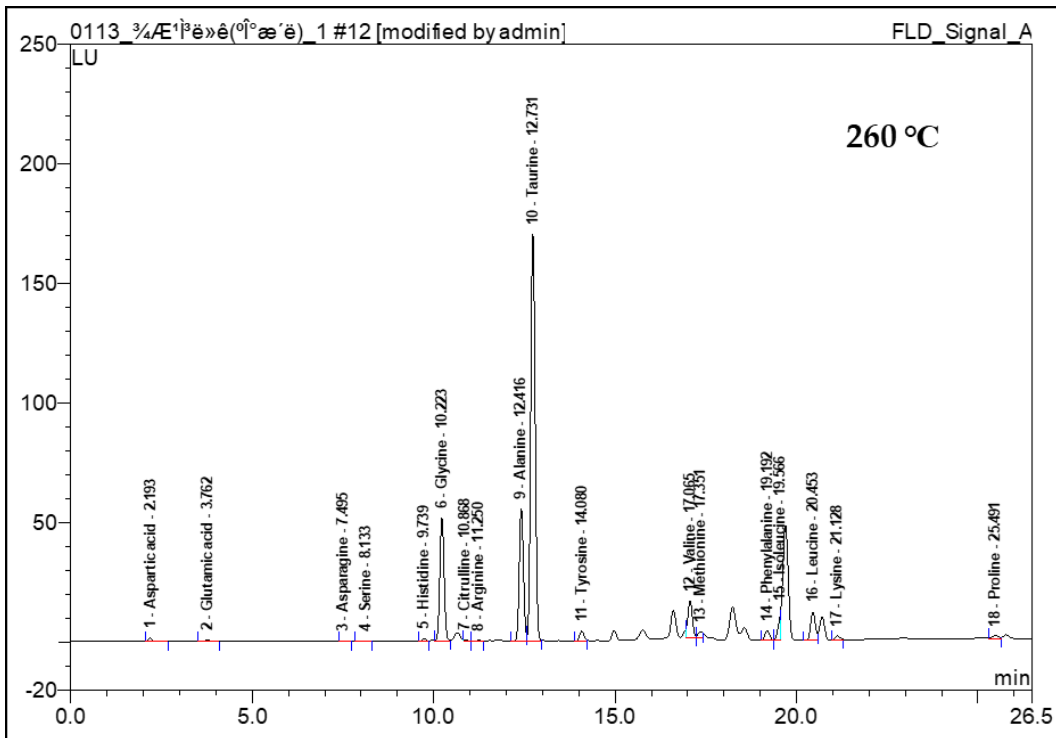


Figure S4. Chromatogram of amino acids obtained from *A. pectinata* powder at different subcritical extraction temperature.