

Supplementary Information

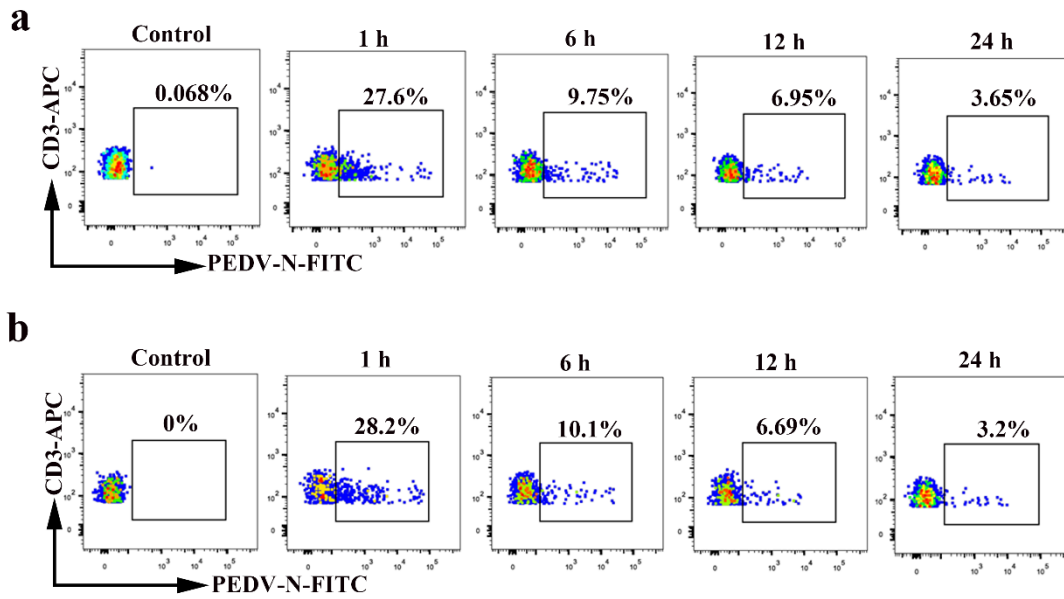


Fig.1 PHA and IL-2-mediated stimulation of blood-derived CD3⁺ T cells does not enhance susceptibility to PEDV infection. Primary blood-derived CD3⁺ T cells (a) or blood-derived CD3⁺ T cells stimulated with PHA and IL-2 (b) were inoculated at an MOI of 0.1 with PEDV. Percentages of PEDV positive CD3⁺ T cells were detected by FACS.

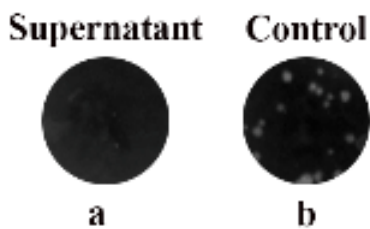


Fig.2 The virus titer was detected by plaque assay

a. Virus in the supernatant of blood-derived CD3⁺ T cells infected PEDV at 1 h. b. PEDV as positive control