

Supplementary Information for

The synaptonemal complex imposes crossover interference and heterochiasmy in Arabidopsis

Laia Capilla-Perez, Stéphanie Durand, Aurélie Hurel, Qichao Lian, Aurélie Chambon, Christelle Tauchy, Victor Solier, Mathilde Grelon, Raphael Mercier*

Raphael Mercier
Email: mercier@mpipz.mpg.de

This PDF file includes:

Figure S1. Meiotic chromosome spreads in *smo2*.
Figure S2. Fitting of MLH1 foci distribution to a Poisson distribution
Figure S3. Fitting of the CO number distribution to a Poisson distribution

Other supplementary materials for this manuscript include the following:

Video S1. Z stack of figure 1A
Video S2. Z stack of figure 1B
Video S3. Z stack of figure 2B
Video S4. Z stack of figure 2B
Video S5. Z stack of figure 5A
Video S6. Z stack of figure 5B
Dataset S1. Primers and clones used in this study
Dataset S2. COs position in wild type and *zyp1* mutant

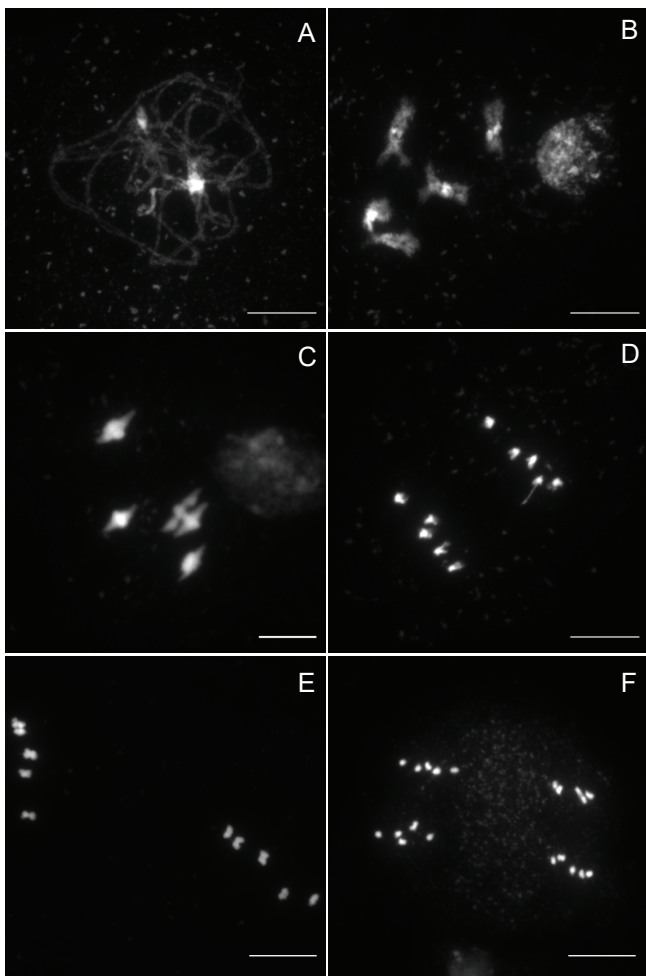
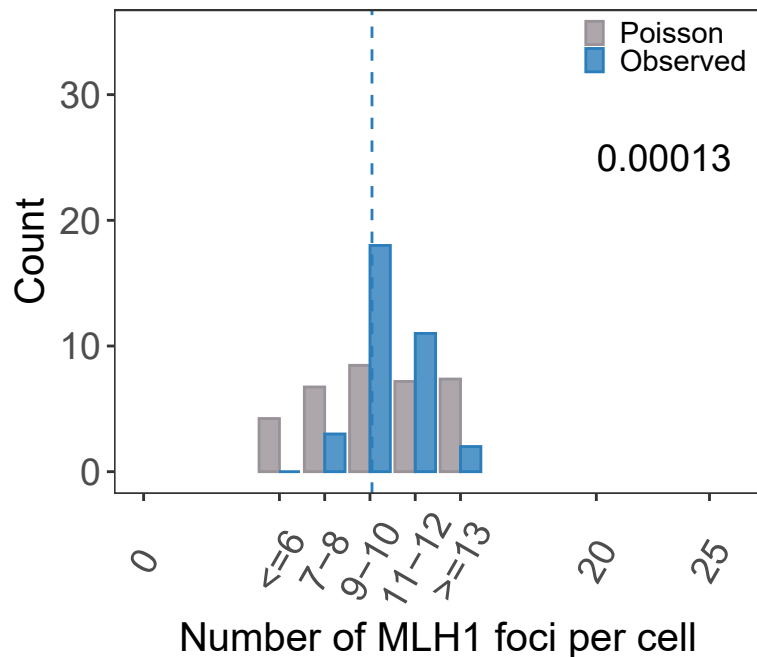


Figure S1. Meiotic chromosome spreads in *smo2*.

(A) Pachytene. (B) Diakinesis. (C) Metaphase I with 5 bivalents.

(D) Anaphase I. (E) Metaphase II. (F) Anaphase II. Scale bar=10 μ m.

Wild type (n=34)



zyp1 (n=212)

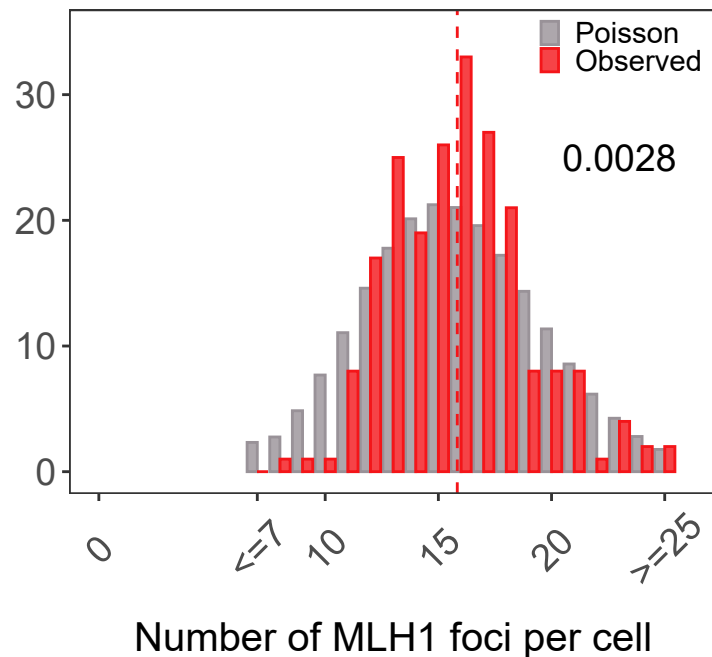


Figure S2. Fitting of MLH1 foci distribution to a Poisson distribution. Classes were pooled to ensure the validity of the chi-squared tests.

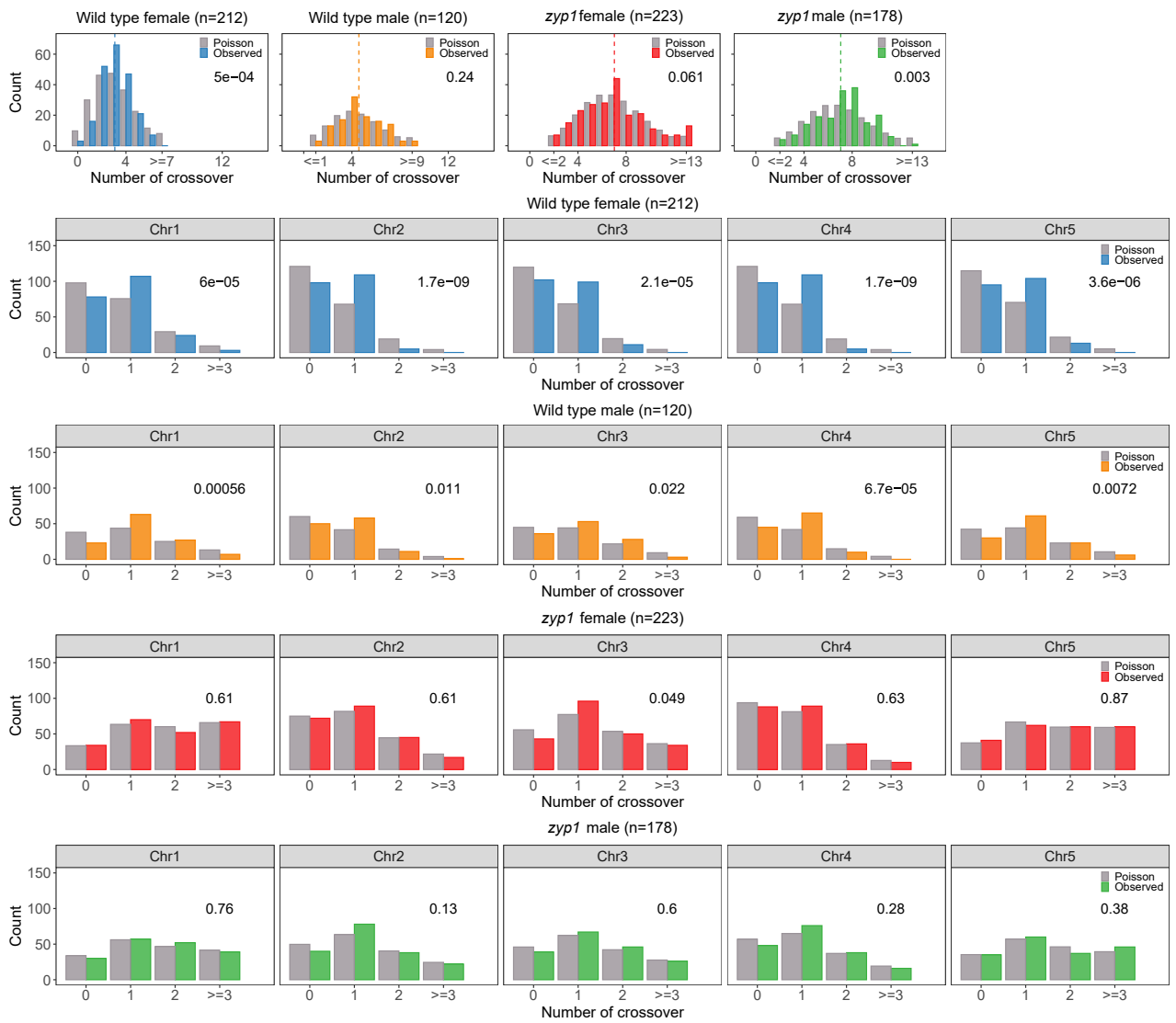


Figure S3. Fitting of the CO number distribution to a Poisson distribution
Classes were pooled to ensure the validity of the Chi-square tests.