

Supplementary Materials: Tumor Activated Cell Penetrating Peptides to Selectively Deliver Immune Modulatory Drugs

Dina V Hingorani, Maria F Camargo, Maryam A Quraishi, Stephen R Adams and Sunil J Advani *

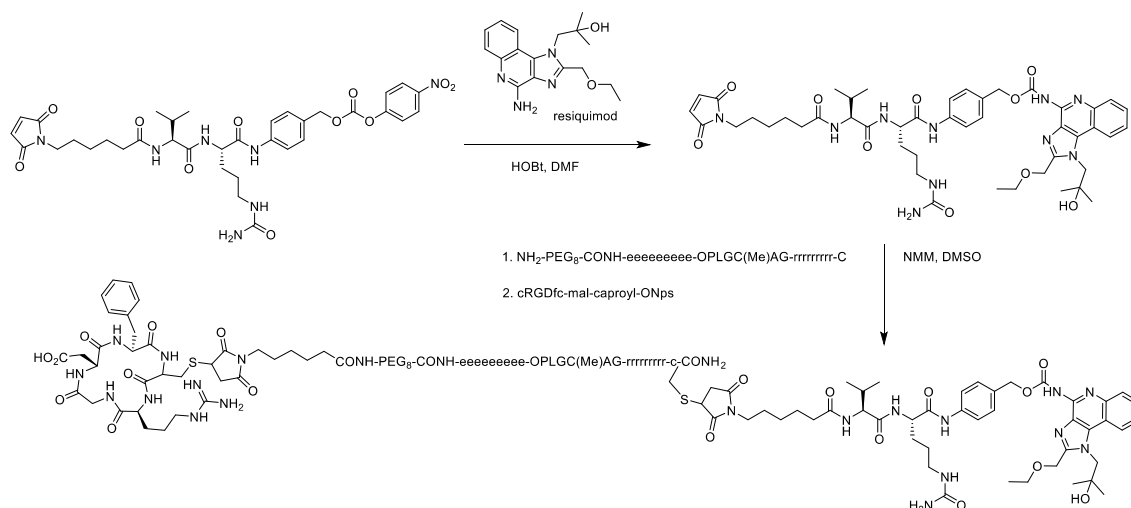


Figure S1. Synthesis scheme for cRGD-ACPP-resiquimod.

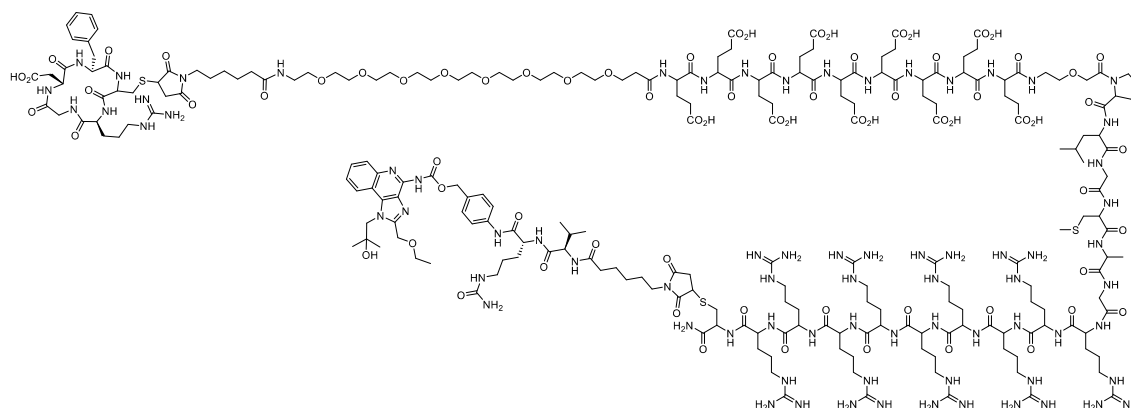


Figure S2. Chemical structure of cRGD-ACPP-resiquimod.

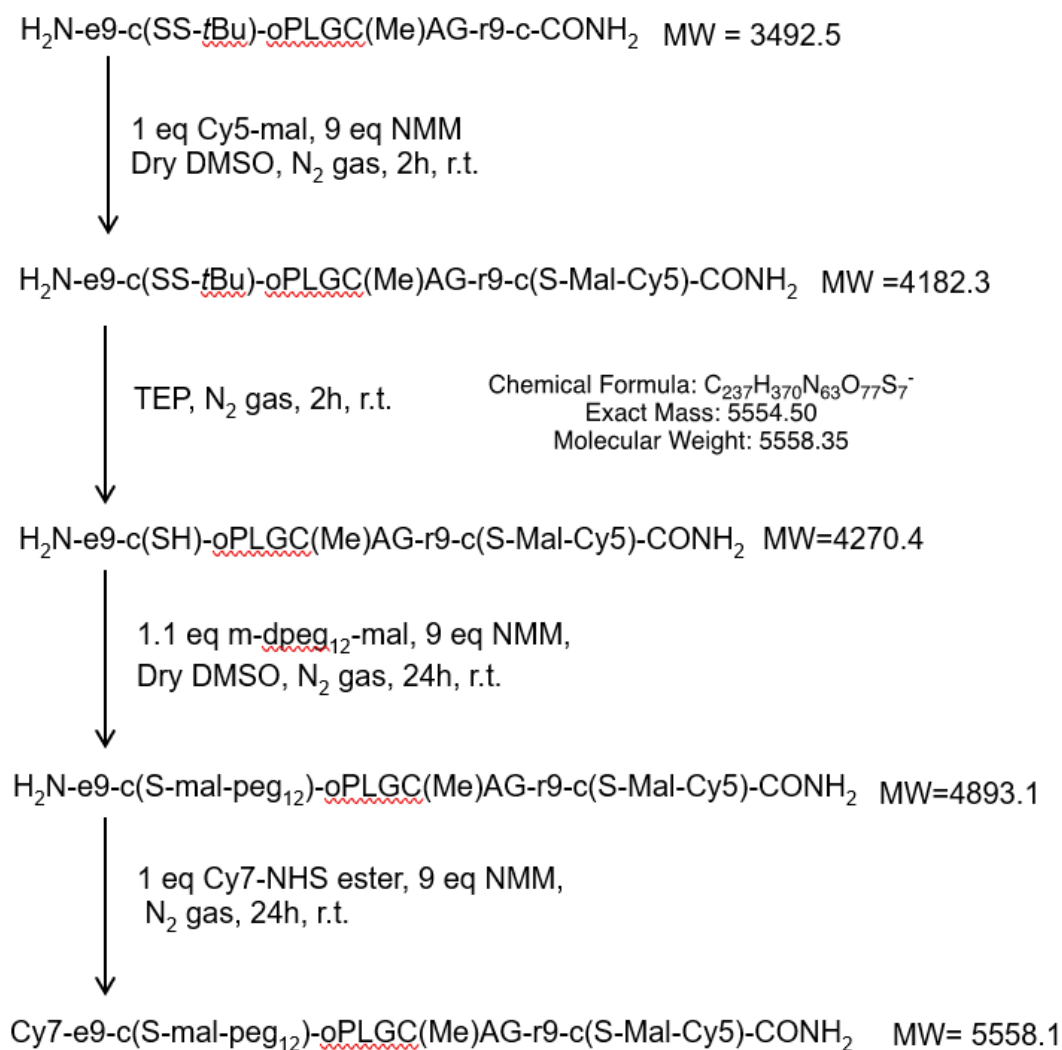


Figure S3. Synthesis scheme for ratiometric ACPP.

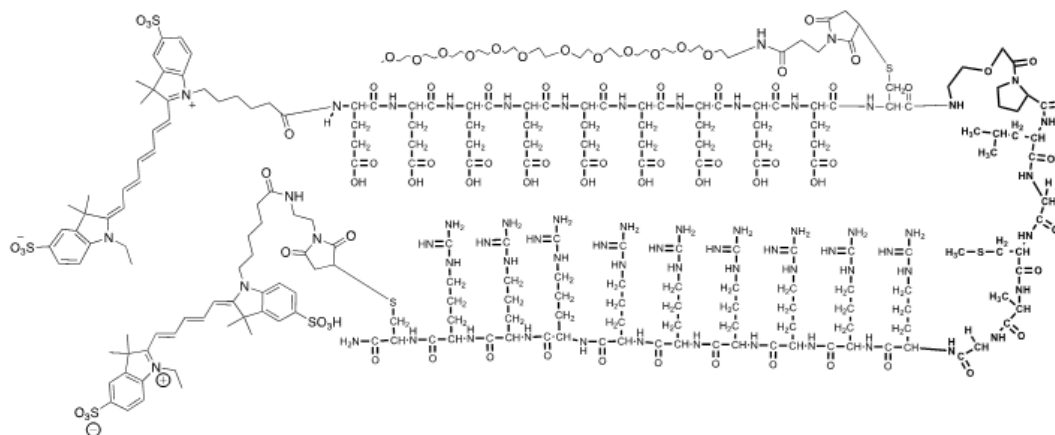


Figure S4. Chemical structure of ratiometric ACPP.

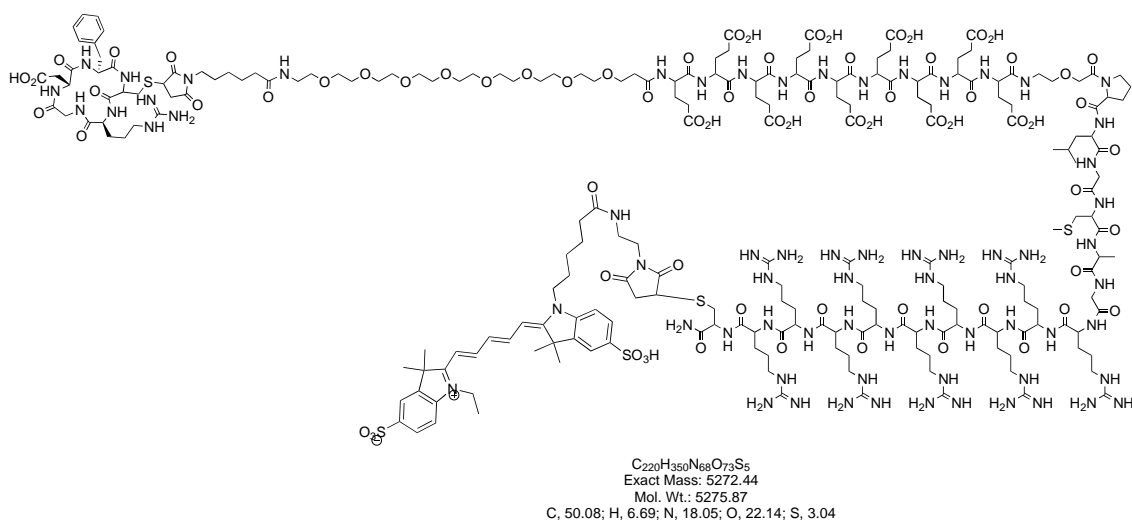


Figure S5. Chemical structure of ACPP-Cy5 conjugate.

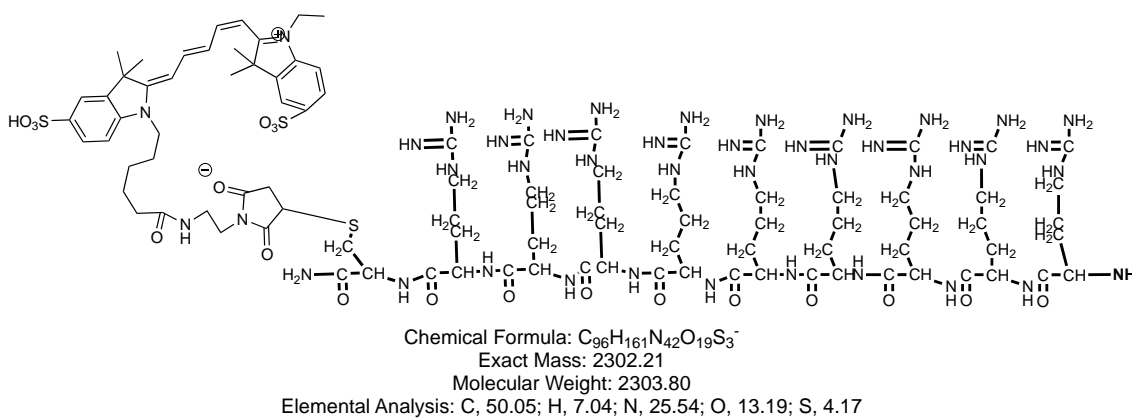


Figure S6. Chemical structure of CPP-Cy5.

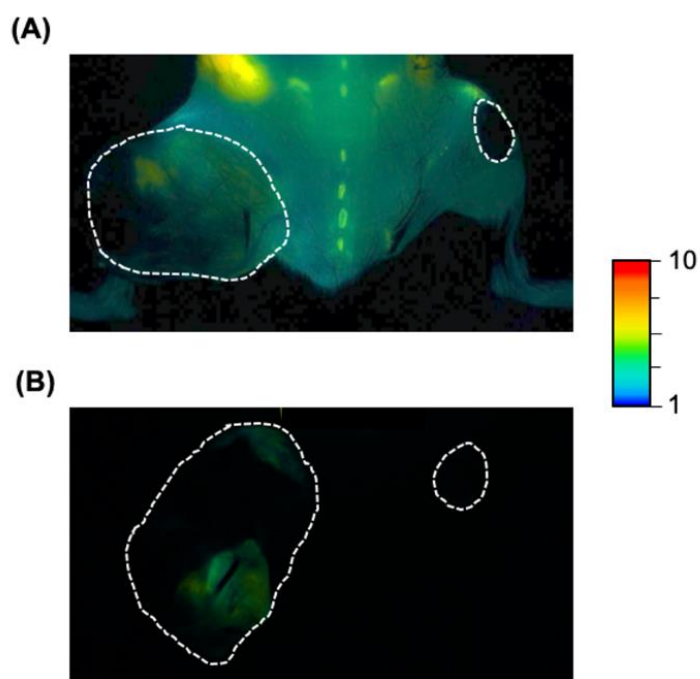


Figure 7. ACPPs in situ cleavage within murine tumors. **(A)** Mice with subcutaneous syngeneic B16F10 murine melanoma tumors tail vein injected with 10 nanomoles ratiometric ACPP. In situ mouse imaging for Cy5: Cy7 emission ratio shown. Cy5: Cy7 emission ratio **(B)** Ex-vivo tumor tissue excised from animal and imaged for Cy5: Cy7 emission ratio. Pseudocolor scale bar shown on far right for both images.