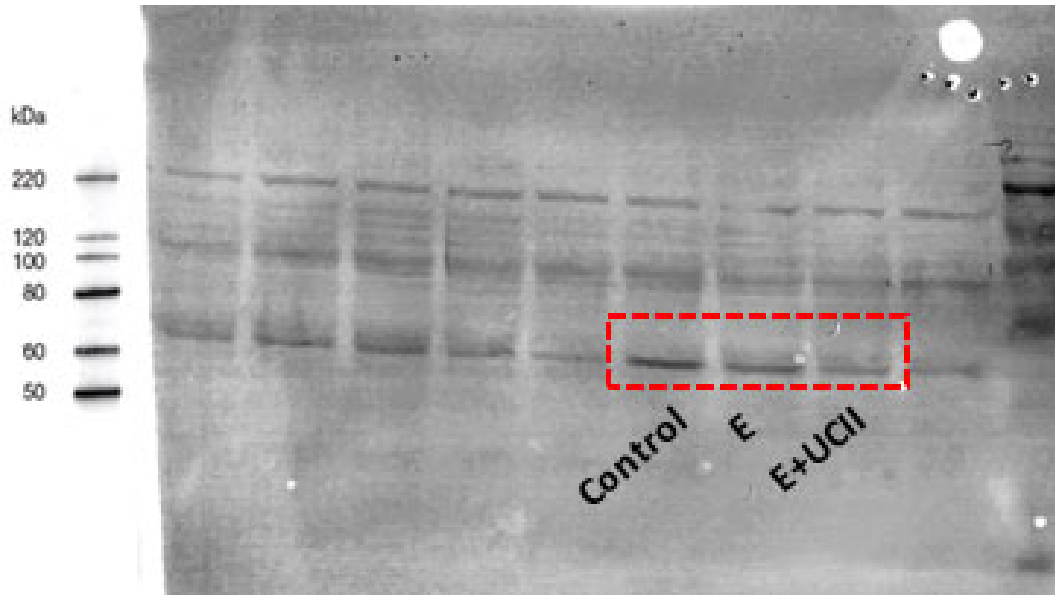
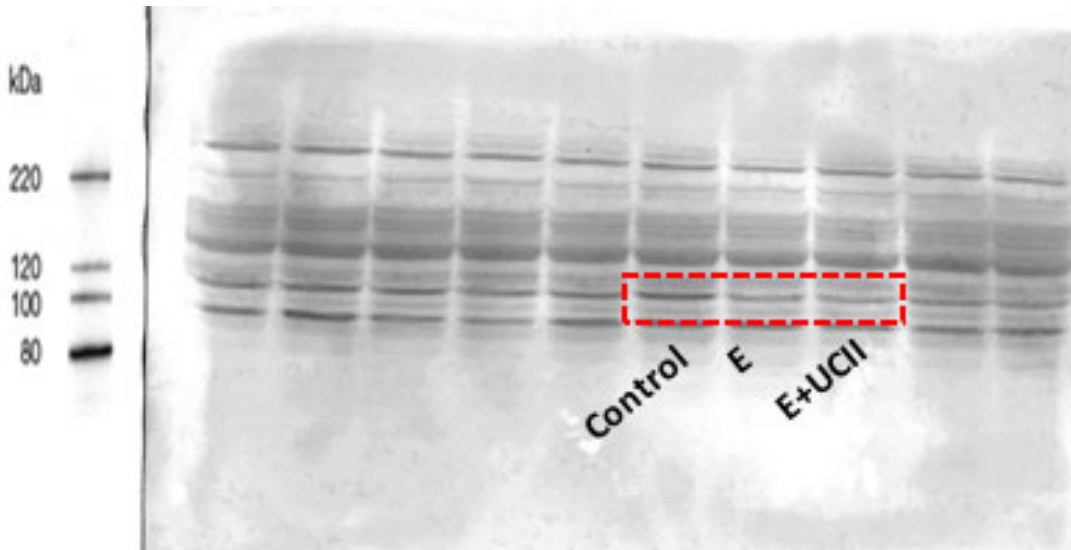




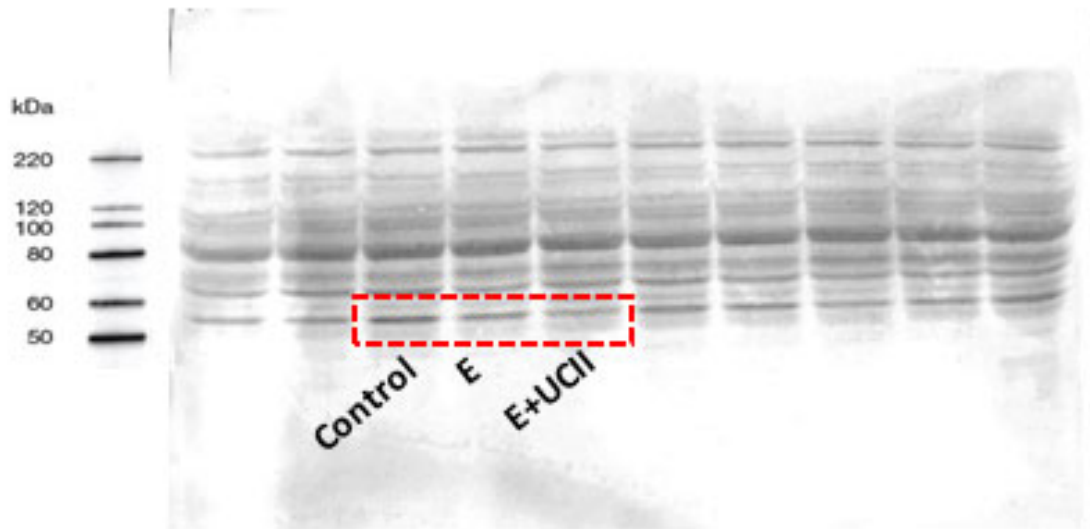
(A)



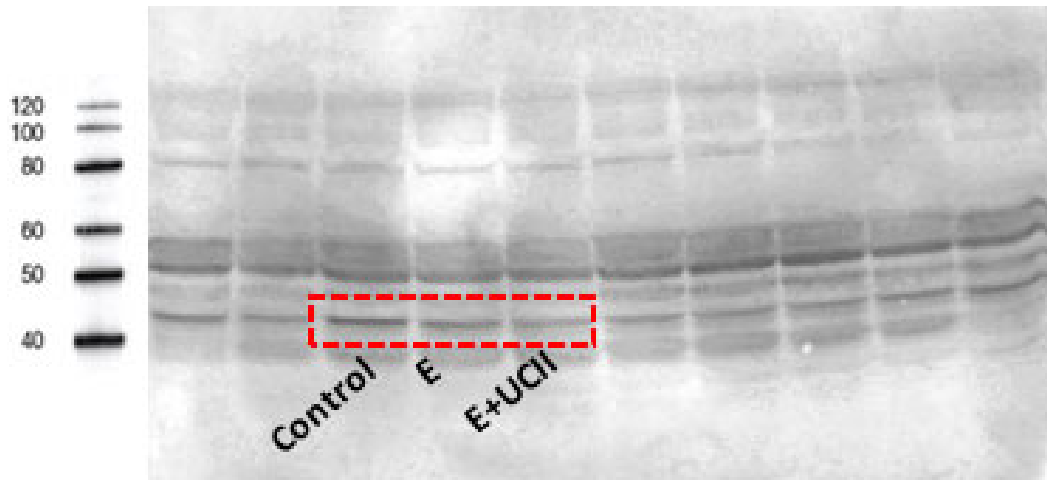
(B)



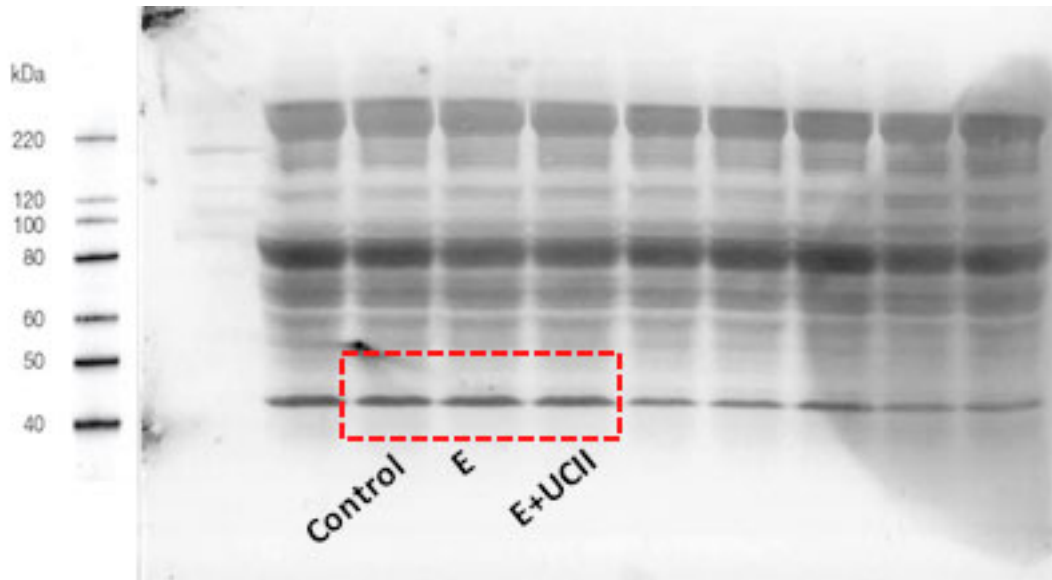
(C)



(D)

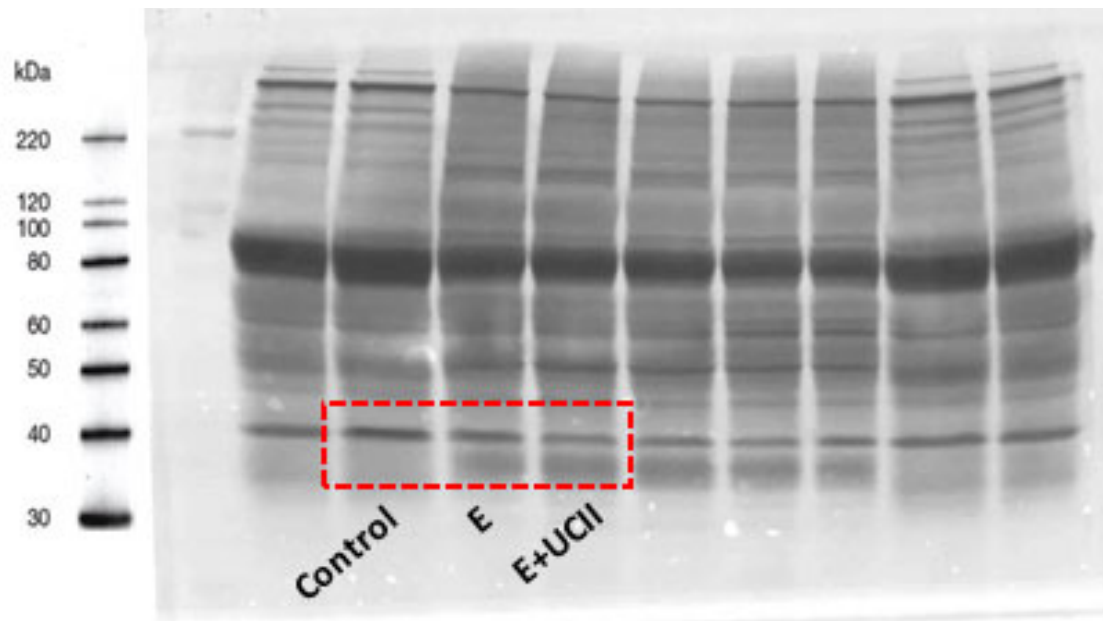


(E)

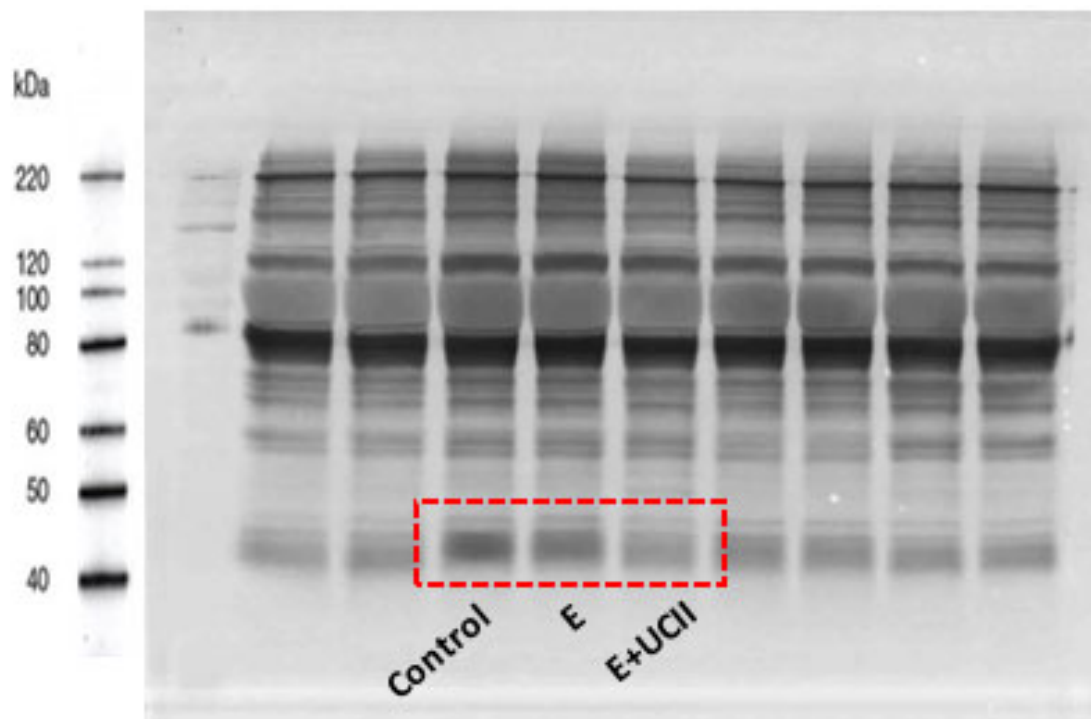


**Figure S1.** Full immunoblots related to Figure 4 (SREB-1C (A), ACLY (B), LXRs (C), FAS (D);  $\beta$ -Actin (E)). Each immunoblot is a representative of three independent experiments. Results shown in Figure4 are delineated by red dotted rectangles. MW (in kDa) are indicated. Control: no exercise and no UCII, E: exercised rats, Exercise + UCII, exercised rats receiving 4 mg/kg BW/day UCII.

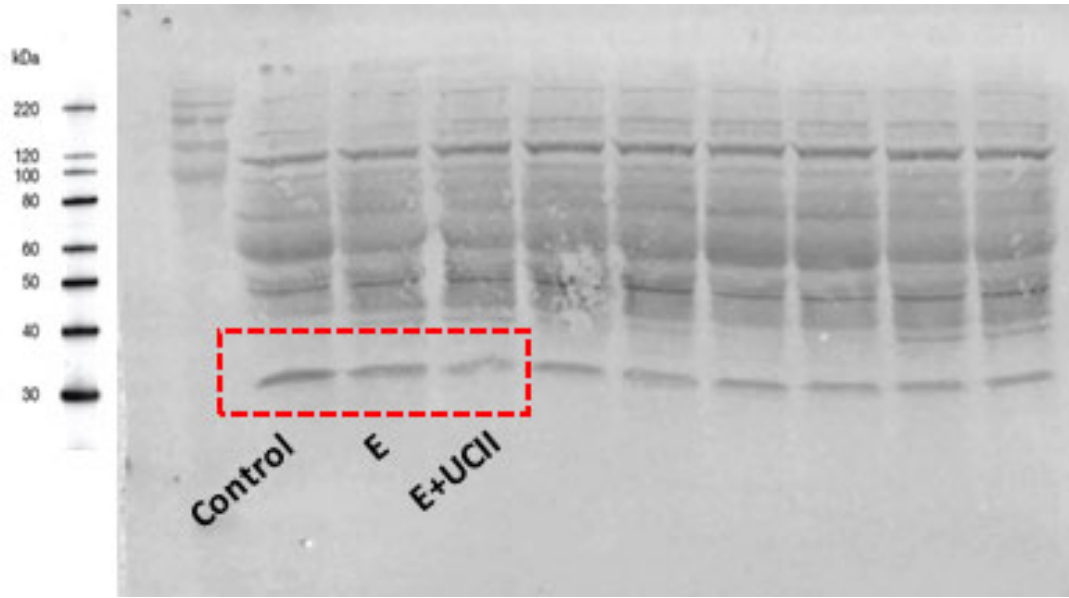
(A)



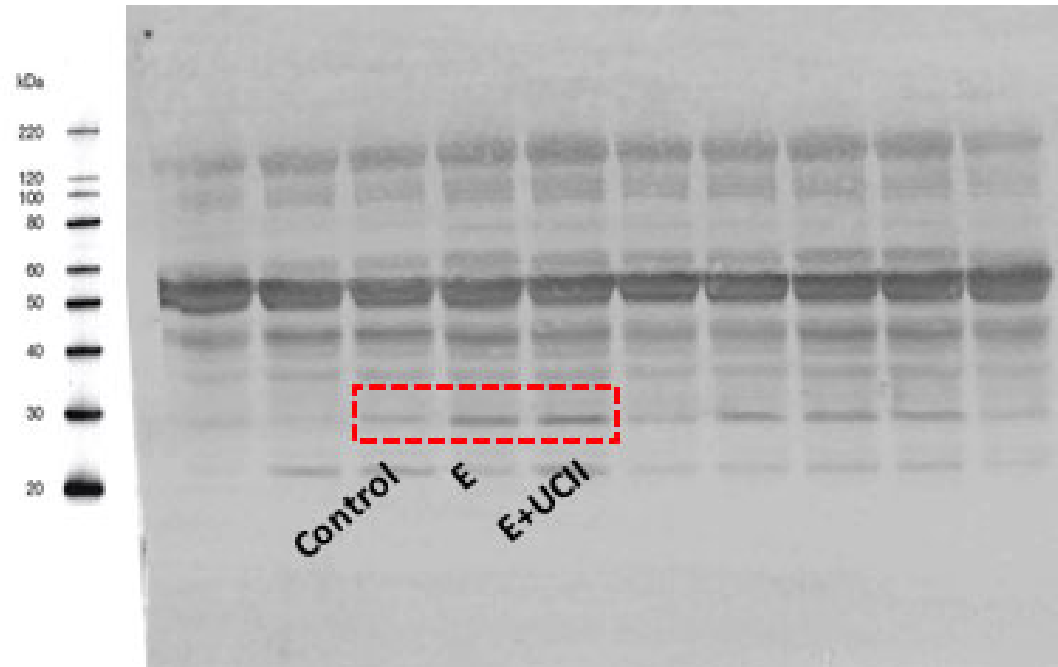
(B)



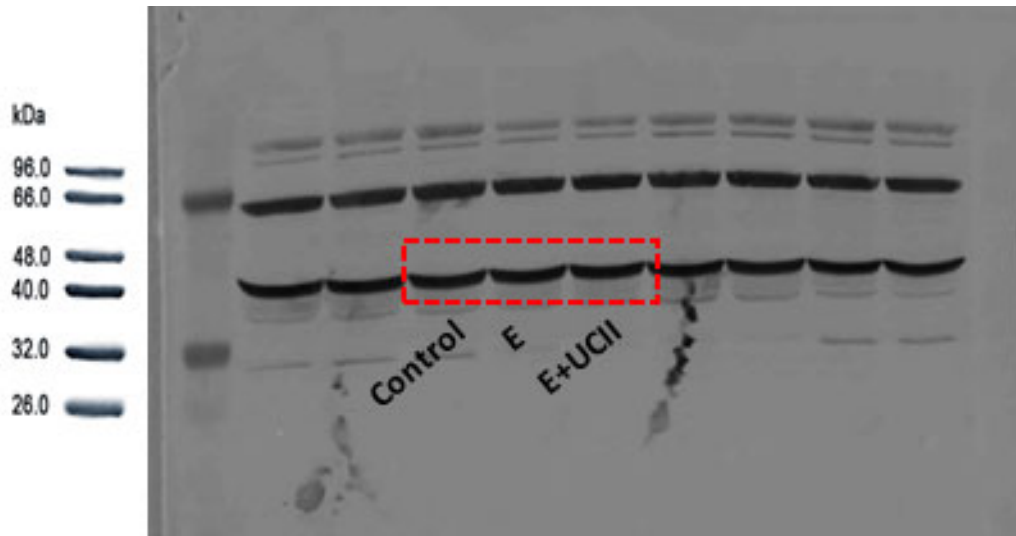
(C)



(D)

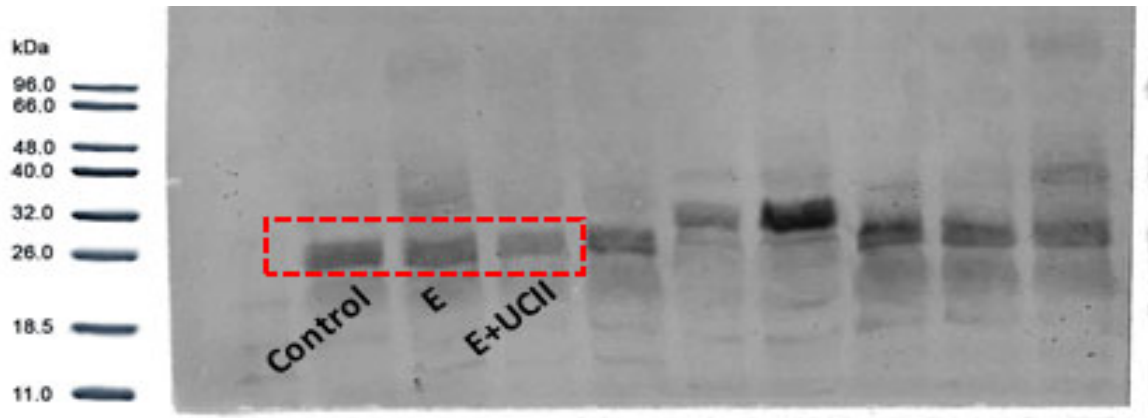


(E)

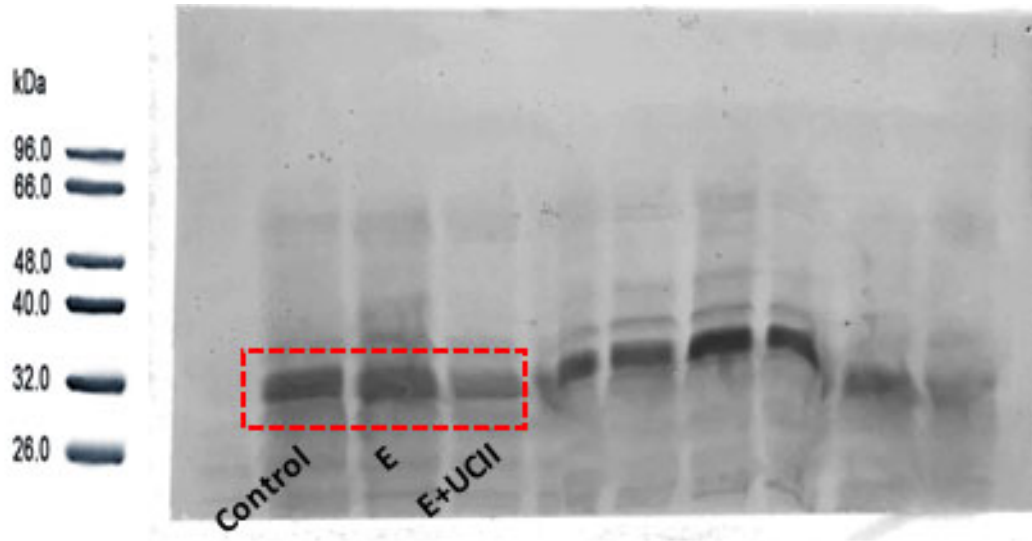


**Figure S2.** Full immunoblots related to Figure 5 (MAFbx (A), MuRF-1 (B), Myostatin (C), Myo D (D), and  $\beta$ -Actin (E)). Each immunoblot is a representative of three independent experiments. Results shown in Figure 5 are delineated by rectangles. MW (in kDa) are indicated. Control: no exercise and no UCII, E: exercised rats, Exercise + UCII, exercised rats receiving 4 mg/kg BW/day UCII.

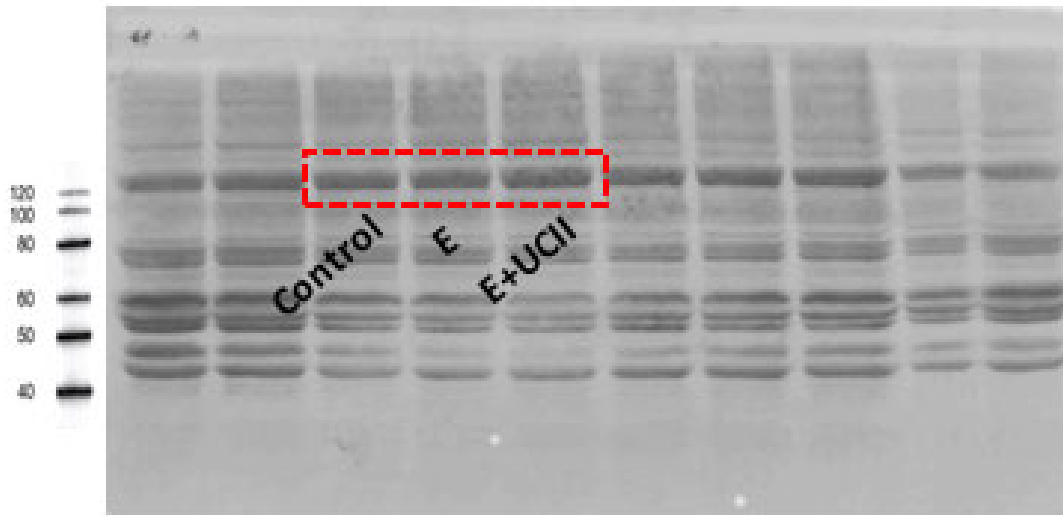
(A)



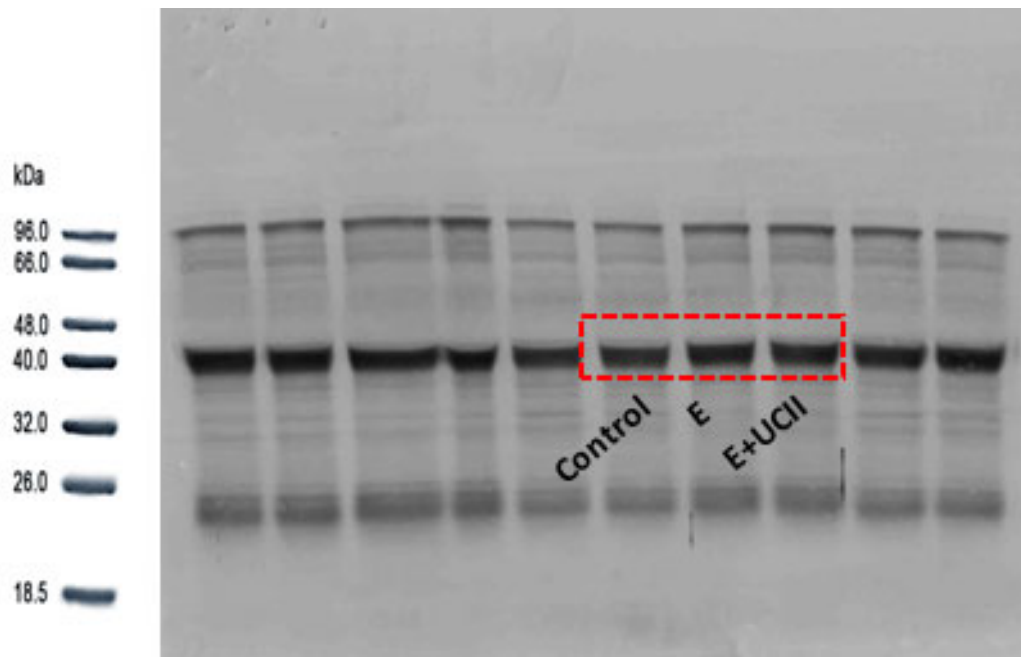
(B)



(C)



(D)



**Figure S3.** Full immunoblots related to Figure 6 (TNF- $\alpha$  (A), IL1- $\beta$  (B), NCAM (C) and  $\beta$ -Actin (D)). Each immunoblot is a representative of three independent experiments. Results shown in Figure 6 are delineated by rectangles. MW (in kDa) are indicated. Control: no exercise and no UCII, E: exercised rats, Exercise + UCII, exercised rats receiving 4 mg/kg BW/day UCII.