

Figure S1

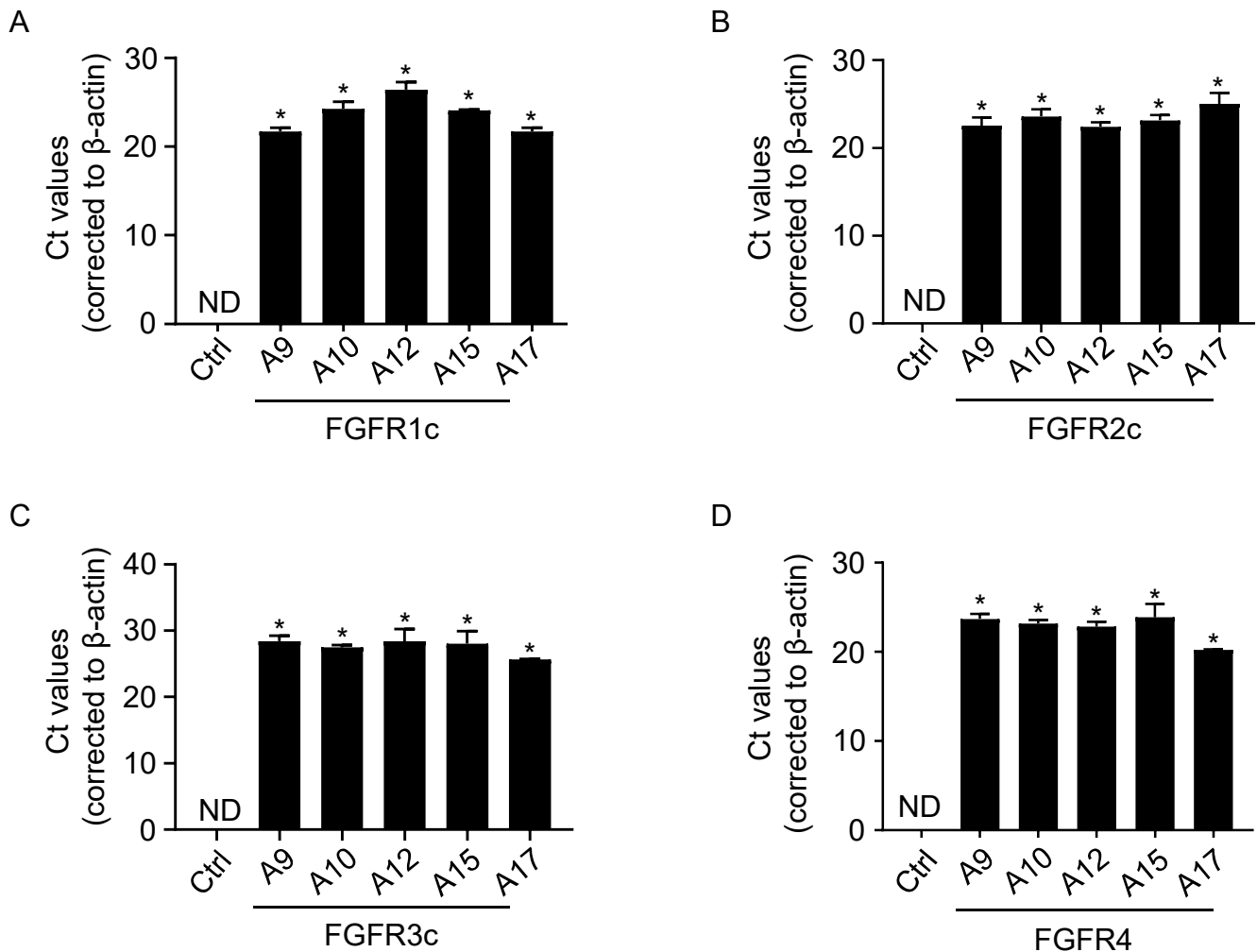


Figure S1. Gene expression levels of five transiently overexpressed ADAMs in COS-7 cells. Overexpression of ADAMs 9 (A9), 10 (A10), 12 (A12), 15 (A15), or 17 (A17) with FGFRs 1c (S1A), 2c (S1B), 3c (S1C) and 4 (S1D) in COS-7 cells. (*) indicates significant increase in ADAMs 9, 10, 12, 15, or 17 mRNA expression in transfected COS-7 sample compared with untransfected sample. $n = 3$; values are \pm s.e.m; Student's t -test; $*P \leq 0.05$.