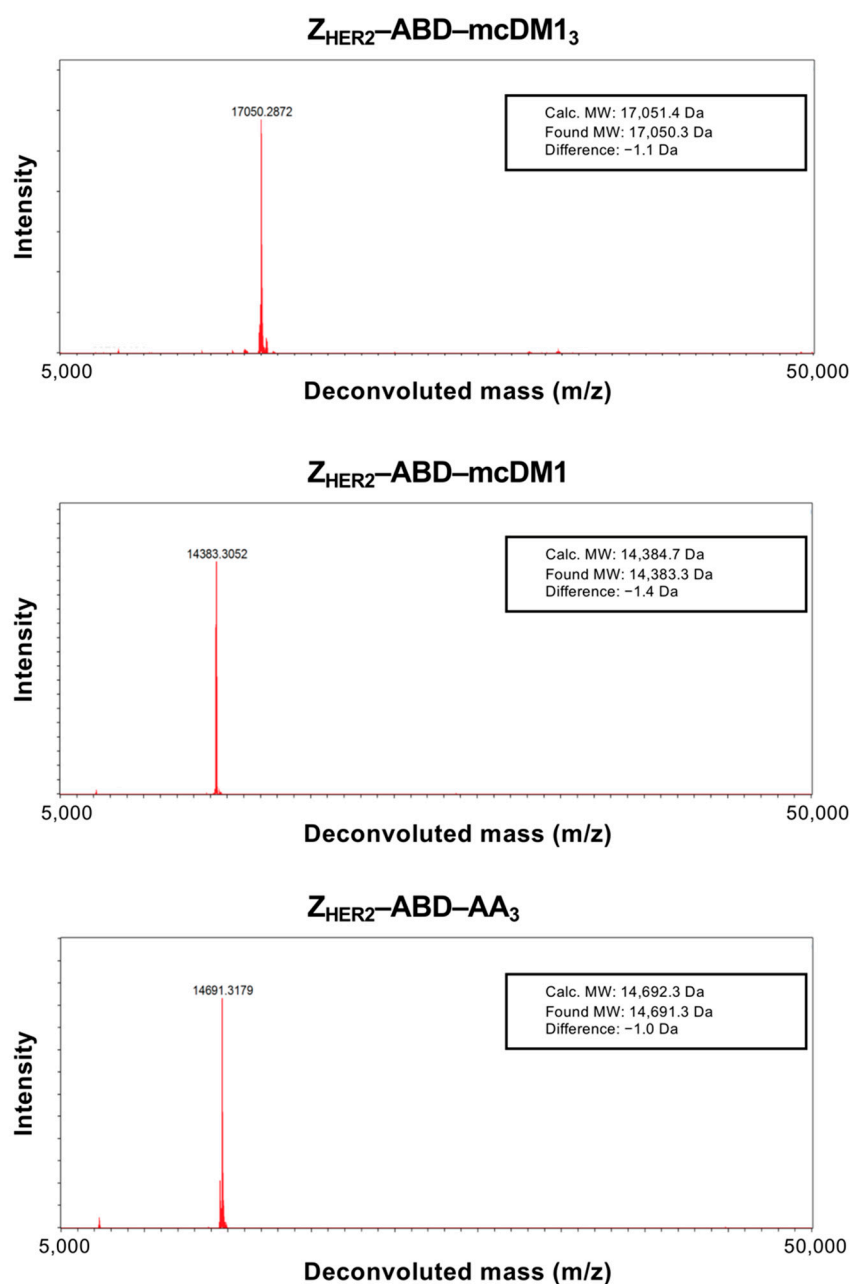


# Supplementary Materials: Affibody-Derived Drug Conjugates Targeting HER2: Effect of Drug Load on Cytotoxicity and Biodistribution

Haozhong Ding, Tianqi Xu, Jie Zhang, Vladimir Tolmachev, Maryam Oroujeni, Anna Orlova, Torbjörn Gräslund and Anzhelika Vorobyeva



**Figure S1.** Determination of the molecular masses by ESI-TOF mass spectrometry. The theoretical MW (Calc. MW) and the Found MW of the conjugates are given in the inset, along with the difference between the two.