

Figure S1. COX-2 mRNA levels. Cells were incubated with 1 mM SIN-1 for 6 h. COX-2 mRNA levels were evaluated by Northern analysis. GAPDH mRNA was used as a control of the mRNA loading. Results are representative of 6 independent experiments; *p<0.05.

D

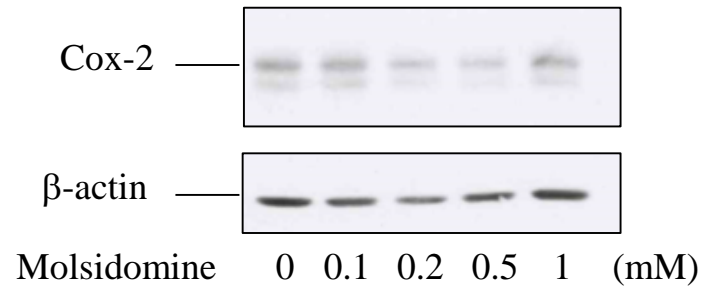


Figure S2. Effect of Molsidomine on Cox-2 expression. HUVEC were incubated for 18 hours with Molsidomine, the inactive precursor of SIN-1. Cox-2 expression was evaluated by Western blot analysis. β -actin was used as a control of protein loading.