

Differences in the Inhibitory Specificity Distinguish the Efficacy of Plant Protease Inhibitors on Mouse Fibrosarcoma

Sonia Yoo Im ¹, Camila Ramalho Bonturi ^{1‡}, Adriana Miti Nakahata ², Clóvis Ryuichi Nakaie ³, Arnildo Pott ⁴, Vali Joana Pott ⁴ and Maria Luiza Vilela Oliva ^{1,*}

‡ These authors contributed equally to the present work.

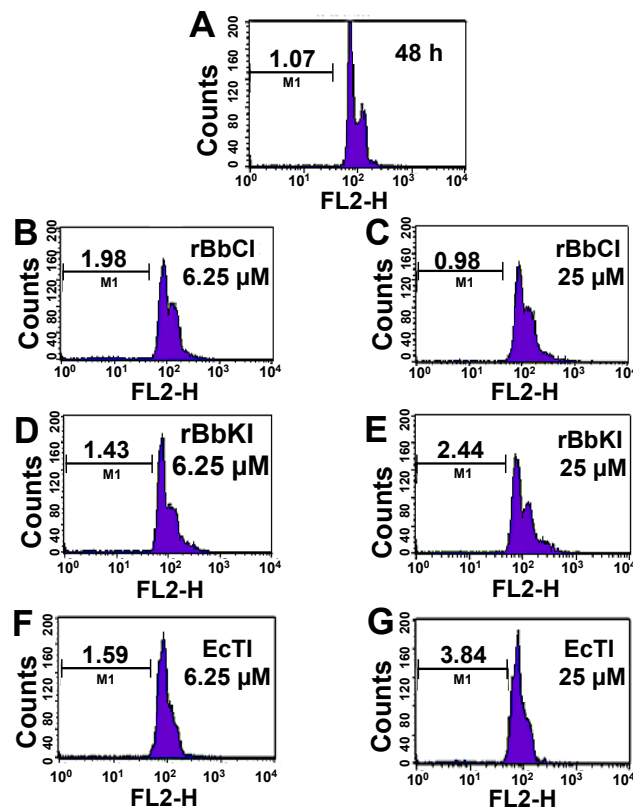


Figure S1. Effect of rBbCI, rBbKI, and EcTI on L929 cell cycle after 48 h incubation. L929 cells treated with (A) control, (B) 6.25 μ M rBbCI, (C) 25 μ M rBbCI, (D) 6.25 μ M rBbKI, (E) 25 μ M rBbKI, (F) 6.25 μ M EcTI, and (G) 25 μ M EcTI. M1 = fragmented cells.

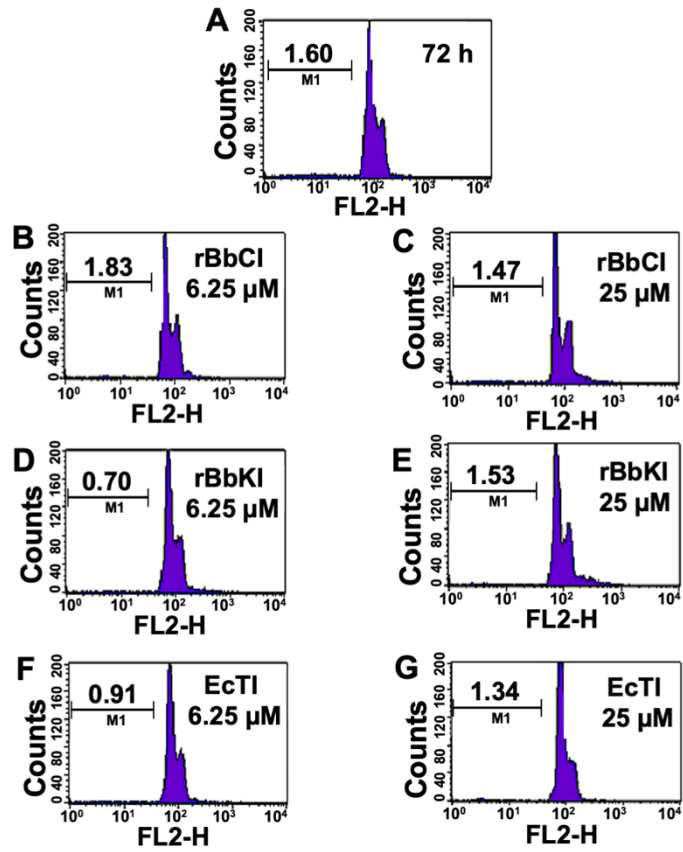


Figure S2. Effect of rBbCI, rBbKI, and EcTI on L929 cell cycle after 72 h incubation. L929 cells treated with (A) control, (B) 6.25 μ M rBbCI, (C) 25 μ M rBbCI, (D) 6.25 μ M rBbKI, (E) 25 μ M rBbKI, (F) 6.25 μ M EcTI, and (G) 25 μ M EcTI. M1 = fragmented cells.