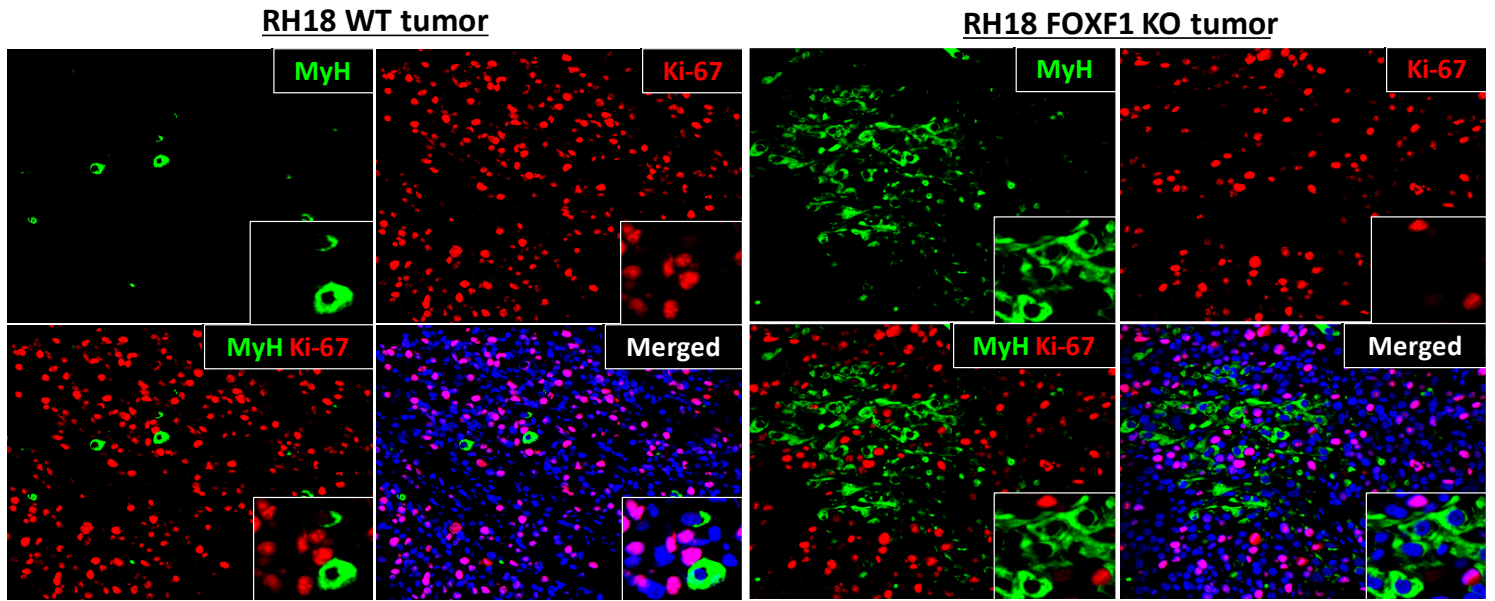
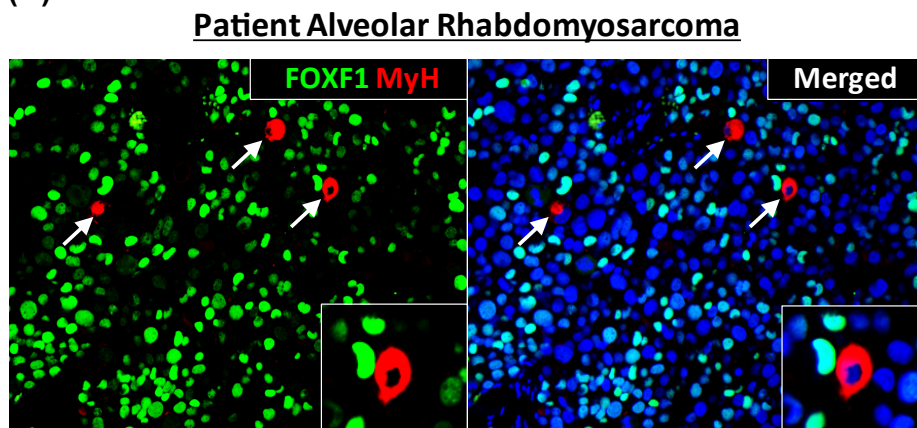


(A)



(B)



(C)

FOXF1 expression after differentiation in orthotopic xenografts

Tumor Model	% [(MyH ⁺ FOXF1 ⁺)/MyH ⁺]
RH4	0% [0/54]
RH18	0.0143% [1/70]
RH30	MyH not detected
aRMS PDX 1	0% [0/16]
aRMS PDX 2	0% [0/46]
aRMS PDX 3	0% [0/16]
aRMS PDX 4	0% [0/27]