

(A)

**Fusion Negative RMS Xenografts**

Embryonal

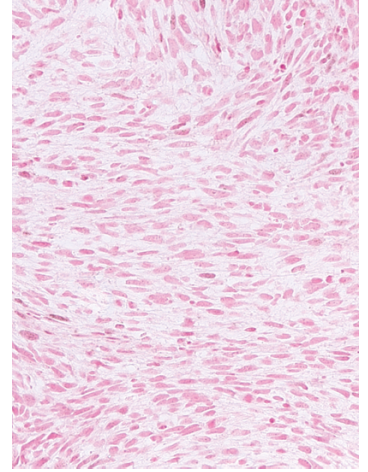
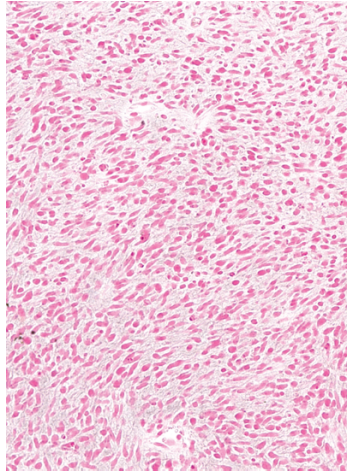
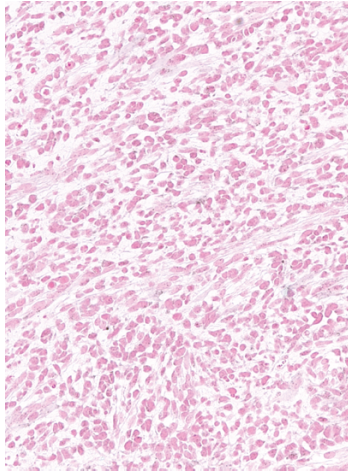
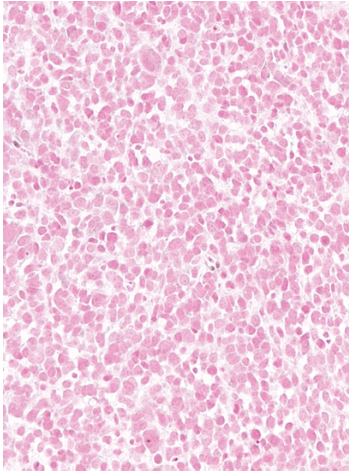
Spindle/Sclerosing

**RD**

**PDX 1**

**PDX 2**

**PDX 1**



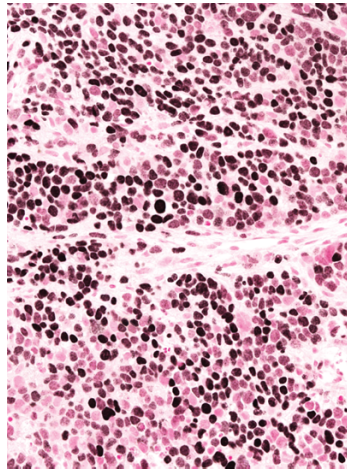
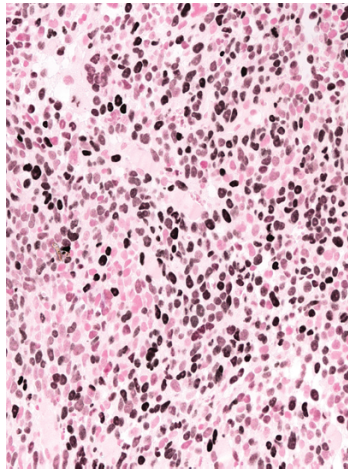
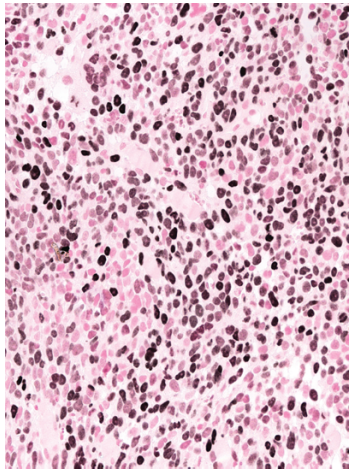
(B)

**Fusion Positive RMS Xenografts**

**RH30**

**RH18**

**RH4**



**PDX 1**

**PDX 2**

**PDX 3**

**PDX 4**

