

Figure S1. Verification of exosomes isolated from plasma of patients with atopic dermatitis and controls. The morphology of exosomes was analyzed by transmission electron microscopy. (A) Magnified window displaying an exosome (scale bar, 100 nm) and (B) original microscopy image (scale bar, 200 nm).

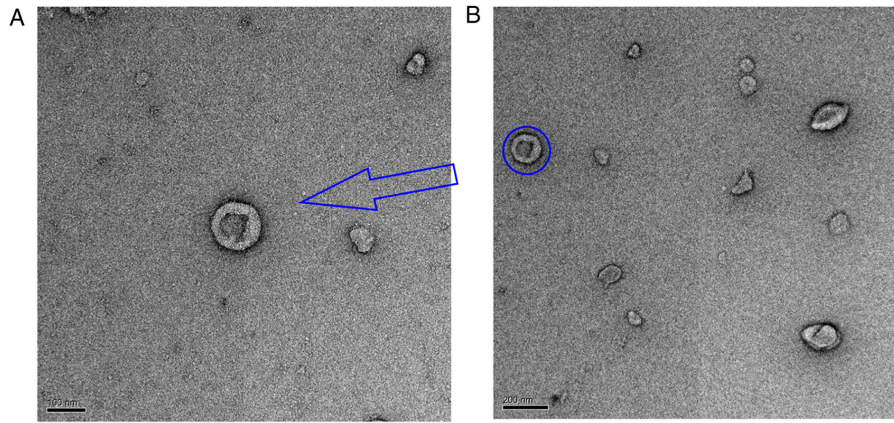


Table SI. Differentially expressed 135 tRFs in 3 subjects with AD compared with 3 controls.

Differentially expressed tRF	log2FC	P-value	FDR	Direction of differential expression
tRF-23-YOHR6HFRD2	-1.2685	0.031536	0.994352	Down
tRF-23-7SIRM1DVV	-2.55918	0.049535	0.994352	Down
tRF-24-0P58309N0Y	2.41805	0.035894	0.994352	Up
tRF-33-Q99P9P9NH57SD3	-1.30854	0.022121	0.994352	Down
tRF-35-ZH0SR9593KMH26	-1.45403	0.047201	0.994352	Down
tRF-28-8W1W18YMENDM	-4.12706	0.014224	0.888916	Down
tRF-31-SWRNLJK578Q1B	-1.89003	0.012825	0.888916	Down
tRF-23-YOH9R8O7D2	-1.37104	0.02499	0.994352	Down
tRF-39-81PV6RRNLNK88KHR	-1.3637	0.049594	0.994352	Down
tRF-24-7SFR06RDI2	-1.92632	0.046661	0.994352	Down
tRF-26-7JPJ60MV9JD	-1.53969	0.026355	0.994352	Down
tRF-22-W0K6MY6V2;tsRNA-3016b	-1.93072	0.009829	0.822962	Down
tRF-33-QJ3KYU4RRWRBD2	-1.58707	0.00713	0.772832	Down
tRF-39-D112Z4R95MK19K2V	-1.65806	0.043211	0.994352	Down
tRF-25-6VF8DHXY6R	-1.40243	0.041839	0.994352	Down
tRF-28-4W9MVKS4I7D4	-1.76435	0.026769	0.994352	Down
tRF-20-BMWIRJ46	-2.31424	0.002966	0.697184	Down
tRF-29-K87SHRMFWRE2	-1.32529	0.037239	0.994352	Down
tRF-18-R2YJ8B04	3.332548	0.02599	0.994352	Up
tRF-16-R2YJ8BE	4.227175	0.009706	0.822727	Up
tRF-30-08R959KUMKF6	-3.21716	0.005352	0.732287	Down
tRF-30-924ZDRJKW4R9	-4.50203	0.004876	0.732287	Down
tRF-29-QSZ34KRQ59J4	-1.79817	0.028945	0.994352	Down
tsRNA-1042	2.396607	0.007066	0.772832	Up
tRF-22-YO9LON4V3	2.162672	0.047529	0.994352	Up
tRF-37-YO1N7KYUSR0P1SJ	2.377141	0.045827	0.994352	Up
tRF-26-18LPMBQ4NKD	-2.38053	0.003437	0.732287	Down
tsRNA-1039	1.519095	0.03636	0.994352	Up
tRF-23-YRL51NLED3	3.38037	0.045764	0.994352	Up
tRF-18-HRH7MSD2	-2.24414	0.049262	0.994352	Down
tRF-18-RKVP4P04	2.297663	0.029378	0.994352	Up
tRF-24-7617M4O1J2	-1.30818	0.041728	0.994352	Down
tRF-30-SV9NLN3JWB61	-1.22705	0.026499	0.994352	Down
tRF-31-RR93W0K67205D	-2.55569	0.033211	0.994352	Down
tRF-32-I7XUK87SIRMJ4	-2.20047	0.047666	0.994352	Down
tRF-16-HR6HFRD	-1.66417	0.048209	0.994352	Down
tRF-20-593KMH26	-1.81403	0.048627	0.994352	Down
tRF-21-LI38NJW1B	-1.86273	0.040776	0.994352	Down
tRF-20-PJ58309N	4.648888	0.005132	0.732287	Up
tRF-31-OSRNLNKSEK51B	-2.3534	0.025061	0.994352	Down
tRF-24-19BMWIRJHJ	-1.70158	0.047988	0.994352	Down
tRF-24-7SB1RFOJE2	3.341443	0.024153	0.994352	Up
tRF-17-69JP4P4	3.587934	0.02951	0.994352	Up
tRF-30-PNR8YO9LON4V	1.541294	0.013419	0.888916	Up
tRF-28-WIR959MIL0DR	-1.71543	0.042725	0.994352	Down
tRF-38-YO1N3KYUSR681SD2	1.762206	0.033763	0.994352	Up
tRF-50-QNR8VP94FQFY392J1Y0S	-1.69884	0.03953	0.994352	Down
tRF-27-WJ9X0UD394N	2.898511	0.006128	0.732287	Up
tRF-18-Y9Q867D2	-2.02018	0.036283	0.994352	Down
tRF-30-8HM2OSRNLNKS	-2.50697	0.045139	0.994352	Down
tRF-17-8SOUPR2	-1.45005	0.045613	0.994352	Down
tRF-27-L38BWSNKP92	-1.50964	0.04234	0.994352	Down
tRF-27-M3WEKSPM852	-1.68534	0.023345	0.994352	Down
tRF-23-R2YJ8B9LDS	2.439466	0.026269	0.994352	Up
tRF-17-8871KR2	2.272667	0.039795	0.994352	Up
tRF-22-WEK5KKOV2	-2.69813	0.025327	0.994352	Down
tRF-19-IRM1JVE2	-3.33102	0.041557	0.994352	Down
tRF-34-LR6XQ6S8V0J8HW	-1.53068	0.042545	0.994352	Down
tRF-21-LM4V9K3RB	-4.1336	0.014372	0.888916	Down

Table SI. Continued.

Differentially expressed tRF	log2FC	P-value	FDR	Direction of differential expression
tRF-30-4W9MVKS4I7MN	-2.40645	0.002343	0.685353	Down
tRF-22-8BWSNKP92	-1.75719	0.023665	0.994352	Down
tRF-33-2V7KYUHRH7MSD2	-4.17089	0.005219	0.732287	Down
tRF-28-30YOH9R8O7D2	-1.37409	0.026869	0.994352	Down
tRF-20-51KHZKL6	-2.22848	0.004146	0.732287	Down
tRF-24-76D7LYR1J2	-1.61532	0.021236	0.994352	Down
tRF-18-BS6PDFD2	2.731926	0.032918	0.994352	Up
tRF-30-W4R951KHZKL6	-1.56362	0.045747	0.994352	Down
tRF-27-4W9MVKS4I7K	-1.73055	0.043812	0.994352	Down
tRF-20-79MP9PMN	1.551621	0.045563	0.994352	Up
tRF-37-82FN5KYUHRYWRYJ	1.64161	0.044008	0.994352	Up
tRF-34-LZNL7L73V6M9I3	-1.21326	0.031627	0.994352	Down
tRF-35-Q99P9P9NH57S36	-1.18254	0.0322	0.994352	Down
tRF-26-69JP4PRNFJB	2.371016	0.031754	0.994352	Up
tRF-25-R918VBY9PY	1.872183	0.036436	0.994352	Up
tRF-16-K578Q1B	-1.79437	0.016991	0.90436	Down
tRF-30-IKE7UMKKSWRN	-2.06621	0.043581	0.994352	Down
tRF-23-YOH9Q867D2	-1.65263	0.027735	0.994352	Down
tRF-36-JKIWRNL3KQNK71B	-1.42819	0.043082	0.994352	Down
tRF-20-D9WIRJ46	-2.10277	0.049669	0.994352	Down
tRF-16-K5YY01B	-3.49441	0.012994	0.888916	Down
tRF-27-1EWJQ72S3HM	-3.20299	0.049369	0.994352	Down
tRF-39-Q99P9P9NH57S36F8	-1.20613	0.029972	0.994352	Down
tRF-22-8BWS72092	-1.09099	0.040016	0.994352	Down
tRF-28-3KYU8R6Q46D2	-1.93938	0.004895	0.732287	Down
tRF-24-OPD8309N0Y	2.613822	0.015121	0.888916	Up
tRF-36-W6RM7KYUPRENHRD	2.513503	0.046036	0.994352	Up
tRF-34-1HPSR9O9337K0V	-1.35274	0.033995	0.994352	Down
tRF-21-2EK8E0KRB	-1.35395	0.037362	0.994352	Down
tRF-29-QSZ34KRQ59JM	-1.69093	0.018066	0.925676	Down
tRF-28-QSZ34KRQ590K	-2.42522	0.0028	0.697184	Down
tRF-30-F1R3WE8RO86J	-1.8971	0.014002	0.888916	Down
tRF-30-J09HJHOJ7IR1	-1.9285	0.008974	0.810691	Down
tRF-22-299DWUHSN	2.551047	0.049244	0.994352	Up
tRF-26-K87SERM492B	2.479175	0.040467	0.994352	Up
tRF-29-3K7SIR3DR2I2	-2.47975	0.034913	0.994352	Down
tRF-27-Q0YOH9Q867J	-2.11414	0.025231	0.994352	Down
tRF-29-K876DRMD5112	-1.56758	0.012157	0.881827	Down
tRF-36-Q99P9P9NH57S36D	-1.27485	0.022769	0.994352	Down
tRF-20-2EK8E0KR	-1.69897	0.02005	0.994352	Down
tRF-22-79MP9PMNI	1.886745	0.013571	0.888916	Up
tRF-21-2E4V9K3RB	-1.67141	0.02614	0.994352	Down
tRF-21-LB3KJBP1B	3.591705	0.0089	0.810691	Up
tRF-28-D89NJ4S2I7DM	1.28928	0.042262	0.994352	Up
tRF-34-YKWIR959MIL0HV	-1.39329	0.015552	0.889325	Down
tRF-26-Q99P9P9NH50	-4.17982	0.008374	0.798506	Down
tRF-20-2E4V9K3R	-2.85905	0.007274	0.772832	Down
tRF-37-YO1N3KYUSR681SJ	2.2985	0.029364	0.994352	Up
tRF-21-LEK5YY01B	-2.03164	0.039031	0.994352	Down
tRF-23-YU476YQSD2	-1.99514	0.03473	0.994352	Down
tRF-25-R95R3JH926	-1.96059	0.012428	0.881827	Down
tRF-20-7HFK8SR9	-3.94477	0.025602	0.994352	Down
tRF-34-Q99P9P9NH57S15	-1.15118	0.039956	0.994352	Down
tRF-26-5NL3489B3RB	-1.38175	0.028287	0.994352	Down
tRF-18-PNR8YP04	3.530008	0.032583	0.994352	Up
tRF-26-HWH3RXSINHE	2.641773	0.043074	0.994352	Up
tRF-43-W282FN5KYUHRYWRYD2	1.788579	0.026335	0.994352	Up
tRF-37-Q99P9P9NH57S362	-1.22558	0.028672	0.994352	Down
tRF-16-RZ3L7L0	1.614748	0.038148	0.994352	Up

Table SI. Continued.

Differentially expressed tRF	log2FC	P-value	FDR	Direction of differential expression
tRF-19-Z3RZ182X	-1.89957	0.023478	0.994352	Down
tRF-32-Q99P9P9NH57SJ	-1.34263	0.035549	0.994352	Down
tRF-22-Z3RZ18VBQ	-1.86841	0.028053	0.994352	Down
tRF-32-5DMKYUYRLHR0J	-1.35945	0.032508	0.994352	Down
tRF-27-18LPMBQ4NKJ	-1.63255	0.021034	0.994352	Down
tRF-22-QNR8ZP9LL	-2.02519	0.022619	0.994352	Down
tRF-23-YUS9R8B7D2	-1.3835	0.036563	0.994352	Down
tRF-37-1OR6QOH04MR1J5J	-3.85212	0.030875	0.994352	Down
tRF-29-5SVP9N15WVIP	2.493146	0.048453	0.994352	Up
tRF-42-YDLBRY73WEK5KKOV2	-2.07827	0.036589	0.994352	Down
tRF-27-6978WPRLXN3	-1.24099	0.041702	0.994352	Down
tRF-16-3WW4E1B	-3.27671	0.043874	0.994352	Down
tRF-33-5DMKYUYRLHR0D2	-1.1955	0.048574	0.994352	Down
tRF-25-Z3RZ18VBY9	-1.65907	0.038658	0.994352	Down
tRF-29-8SR9BM32LJ1J	-1.57647	0.015614	0.889325	Down
tRF-18-PRENHRD2	-1.7087	0.016509	0.900682	Down
tRF-18-RKVP4PDY	3.496262	0.035742	0.994352	Up

The criteria of $\log_2FC > 1$ or < -1 and $P < 0.05$ were applied. AD, atopic dermatitis; tRF, transfer RNA derived fragment; FDR, false discovery rate; FC, fold change.

Table SII. Six types of differentially expressed tRFs identified in 3 patients with atopic dermatitis and 3 controls.

tsRNA	Fragment sequence	Type
tsRNA-1042	AACCGAGCGTCCAAGCTCTTTCATTTT	tRF-1
tsRNA-1039	TCGAGAGGGGCTGTGCTCGCAAGGTTTCTTT	tRF-1
tRF-23-YOHR6HFRD2	TTCAAATCCCGGACGAGCCCCCA	tRF-3
tRF-23-7SIRM1DVV	GTTCGATTCCCGGCCAATGCACC	tRF-3
tRF-35-ZH0SR9593KMH26	TTGCGACCCGGGTTTCGATTCCCGGGCGGCGCACCA	tRF-3
tRF-31-SWRNLJK578Q1B	GTCGTGGGTTTCGAGCCCCACGTTGGGCGCCA	tRF-3
tRF-23-YOH9R8O7D2	TTCAAATCTCGGTGGGACCTCCA	tRF-3
tRF-24-7SFR06RDI2	GTTCGAGCCCACCCAGGGACGCCA	tRF-3
tRF-22-W0K6MY6V2;tsRNA-3016b	TCGAGCCCCACGTTGGGCGCCA	tRF-3
tRF-33-QJ3KYU4RRWRBD2	GCGGCCCGGGTTTCGACTCCCGGTGTGGGAACCA	tRF-3
tRF-39-D112Z4R95MK19K2V	AAGCCAGGGATTGTGGGTTTCGAGTCCCACCTGGGGTACC	tRF-3
tRF-20-BMWIRJ46	AAATCTCGCTGGGGCCTCCA	tRF-3
tRF-29-K87SHRMFWRE2	CCCGGGTTCGATCCCCGGCATCTCCACCA	tRF-3
tRF-30-08R959KUMKF6	ACCGGGTTCGATTCCCCGACGGGGAGCCA	tRF-3
tRF-37-YO1N7KYUSR0P1SJ	TTCAAAGGTTGTGGGTTTCGAGTCCCACCAGAGTTCGCC	tRF-3
tRF-18-HRH7MSD2	ATCCCATCCTCGTCGCCA	tRF-3
tRF-24-7617M4O1J2	GTTCAAGTCTCGGTGGAACCTCCA	tRF-3
tRF-30-SV9NLN3JWB61	GTCGCTGGTTCGATTCCCGCTCGAAGGACC	tRF-3
tRF-31-RR93W0K67205D	GGTCCTGGGTTTCGAGCCCCAGTGAACCACC	tRF-3
tRF-16-HR6HFRD	ATCCCGGACGAGCCCC	tRF-3
tRF-20-593KMH26	GATCCCGGGCGGCGCACCA	tRF-3
tRF-21-LI38NJW1B	CGACTCCTGGCTGGCTCGCCA	tRF-3
tRF-31-OSRNLNKSEK51B	GACCGGGTTCGATTCCCCGACGGGGAGCCA	tRF-3
tRF-24-19BMWIRJHJ	AGTTCAAATCTCGCTGGGGCCTCC	tRF-3
tRF-24-7SB1RFOJE2	GTTCGAAACCGGGCAGAAGCACCA	tRF-3
tRF-28-WIR959MIL0DR	TCGCTGGTTCGATTCCGGCTCGAAGGAC	tRF-3
tRF-38-YO1N3KYUSR681SD2	TTCAAAGGTTCCGGGTTTCGAGTCCCGGCGGAGTTCGCCA	tRF-3
tRF-18-Y9Q867D2	TTCTCGCTGGGGCCTCCA	tRF-3
tRF-17-8SOUPR2	TCCCGGACGAGCCCCCA	tRF-3
tRF-27-L38BWSNKP92	CGAGTTCAAATCTCGCTGGGGCCTCCA	tRF-3
tRF-27-M3WEKSPM852	CGGGTTCGATCCCCGGCATCTCCACCA	tRF-3
tRF-17-8871KR2	TCCGGGTGCCCCCCCA	tRF-3
tRF-22-WEK5KKOV2	TCGATCCCACCCAGGGACGCCA	tRF-3
tRF-19-IRM1JVE2	ATCCCGGCCCATGCACCA	tRF-3
tRF-21-LM4V9K3RB	CGATCCTCGCTGGGGCCTCCA	tRF-3
tRF-22-8BWSNKP92	TCAAATCTCGCTGGGGCCTCCA	tRF-3
tRF-33-2V7KYUHRH7MSD2	CACGCGTGGGTTTGAATCCCATCCTCGTCGCCA	tRF-3
tRF-28-30YOH9R8O7D2	CCGAGTTCAAATCTCGGTGGGACCTCCA	tRF-3
tRF-20-51KHZKL6	GAGCCCCACGTTGGGCGCCA	tRF-3
tRF-24-76D7LYR1J2	GTTCAAATCTCGCTGGGGCCTCCA	tRF-3
tRF-18-BS6PDFD2	AACCGGGCAGAAGCACCA	tRF-3
tRF-30-W4R951KHZKL6	TCGTGGGTTTCGAGCCCCACGTTGGGCGCCA	tRF-3
tRF-37-82FN5KYUHRYWRYJ	TCAGAAGATTGAGGGTTTGAATCCCTTCGTGGTTGCC	tRF-3
tRF-16-K578Q1B	CCCACGTTGGGCGCCA	tRF-3
tRF-23-YOH9Q867D2	TTCAAATCTCGCTGGGGCCTCCA	tRF-3
tRF-36-JKIWRNL3KQNK71B	CAGGGATTGTGGGTTTCGAGTCCCATCTGGGGTGCCA	tRF-3
tRF-20-D9WIRJ46	AATCTCGCTGGGGCCTCCA	tRF-3
tRF-16-K5YY01B	CCCACTTCTGACACCA	tRF-3
tRF-22-8BWS72092	TCAAATCTCGGTGGAACCTCCA	tRF-3
tRF-28-3KYU8R6Q46D2	CCGGGTTTCGATCCCCGGCATCTCCACCA	tRF-3
tRF-36-W6RM7KYUPRENHRD	TCTCAGGGTTCGTGGGTTTCGAGCCCCACGTTGGGCGC	tRF-3
tRF-34-1HPSR9O9337K0V	AGGCGGCCCGGGTTCGACTCCCGGTGTGGGAACC	tRF-3
tRF-21-2EK8E0KRB	CAAATCCCGGACGAGCCCCCA	tRF-3
tRF-30-F1R3WE8RO86J	AGACCGGGTTCGATTCCCCGACGGGGAGC	tRF-3
tRF-29-3K7SIR3DR2I2	CCGGGGTTCGATTCCCCGACGGGGAGCCA	tRF-3
tRF-27-Q0YOH9Q867J	GCGAGTTCAAATCTCGCTGGGGCCTCC	tRF-3
tRF-29-K876DRMD5112	CCCGGGTCAAATCCCCGACGAGCCCCCA	tRF-3
tRF-20-2EK8E0KR	CAAATCCCGGACGAGCCCC	tRF-3
tRF-21-2E4V9K3RB	CAAATCTCGCTGGGGCCTCCA	tRF-3

Table SII. Continued.

tsRNA	Fragment sequence	Type
tRF-21-LB3KJBP1B	CGAAACCGGGCAGAAGCACCA	tRF-3
tRF-34-YKWIR959MIL0HV	TTAGGTCGCTGGTTCGATTCCGGCTCGAAGGACC	tRF-3
tRF-20-2E4V9K3R	CAAATCTCGCTGGGGCCTCC	tRF-3
tRF-37-YO1N3KYUSR681SJ	TTCAAAGGTTCCGGGTTTCGAGTCCCGGCGGAGTCGCC	tRF-3
tRF-21-LEK5YY01B	CGAATCCCACCTTCTGACACCA	tRF-3
tRF-23-YU476YQSD2	TTCGACTCCTGGCTGGCTCGCCA	tRF-3
tRF-25-R95R3JH926	GGTTCGATCCCCGGCATCTCCACCA	tRF-3
tRF-26-5NL3489B3RB	GAGTTCGAGTCTCGGTGGAACCTCCA	tRF-3
tRF-32-5DMKYUYRLHR0J	GAGACCGGGTTCGATTCCCCGACGGGGAGCC	tRF-3
tRF-23-YUS9R8B7D2	TTCGAGTCTCGGTGGAACCTCCA	tRF-3
tRF-16-3WW4E1B	CCTGTTCGTGACGCCA	tRF-3
tRF-33-5DMKYUYRLHR0D2	GAGACCGGGTTCGATTCCCCGACGGGGAGCCA	tRF-3
tRF-29-8SR9BM32LJ1J	TCCCGGGTTCAAATCCCGGACGAGCCCC	tRF-3
tRF-18-PRENRHD2	GCCCCACGTTGGGCGCCA	tRF-3
tRF-24-0P58309N0Y	ACCAGGATGGCCGAGTGGTTAAGG	tRF-5
tRF-18-RKVP4P04	GGGGGTATAGCTCAGTGG	tRF-5
tRF-20-PJ58309N	GCAGCGATGGCCGAGTGGTT	tRF-5
tRF-17-69JP4P4	GGCTCCATAGCTCAGGG	tRF-5
tRF-30-PNR8YO9LON4V	GCATTGGTGGTTCAATGGTAGAATTCTCGC	tRF-5
tRF-50-QNR8VP94FQFY392J1Y0S	GCGTTGGTGGTATAGTGGTGAGCATAGCTGCCTTC CAAGCAGTTGACCCG	tRF-5
tRF-20-79MP9PMN	GTTTCCGTAGTGTAGCGGTT	tRF-5
tRF-26-69JP4PRNFJB	GGCTCCATAGCTCAGGGGTTAGAGCA	tRF-5
tRF-39-Q99P9P9NH57S36F8	GCTTCTGTAGTGTAGTGGTTATCACGTTTCGCCTCACACG	tRF-5
tRF-24-0PD8309N0Y	ACCAGAATGGCCGAGTGGTTAAGG	tRF-5
tRF-36-Q99P9P9NH57S36D	GCTTCTGTAGTGTAGTGGTTATCACGTTTCGCCTCAC	tRF-5
tRF-22-79MP9PMNI	GTTTCCGTAGTGTAGCGGTTAT	tRF-5
tRF-26-Q99P9P9NH50	GCTTCTGTAGTGTAGTGGTTATCACG	tRF-5
tRF-18-PNR8YP04	GCATTGGTGGTTCAGTGG	tRF-5
tRF-37-Q99P9P9NH57S362	GCTTCTGTAGTGTAGTGGTTATCACGTTTCGCCTCACA	tRF-5
tRF-16-RZ3L7L0	GGTTTCCGTAGTGTAG	tRF-5
tRF-22-QNR8ZP9LL	GCGTTGGTGGTTTAGTGGTAGA	tRF-5
tRF-37-1OR6QOH04MR1J5J	AGTAAGGTCAGCTAAATAAGCTATCGGGCCCATACCC	tRF-5
tRF-27-6978WPRLXN3	GGCTCGTTGGTCTAGGGGTATGATTCT	tRF-5
tRF-18-RKVP4PDY	GGGGGTATAGCTCAGGGG	tRF-5
tRF-39-81PV6RRNLNK88KHR	TCACCGCCGCGGCCCGGGTTCGATTCCCGGTCAGGGAAC	3'-halves
tRF-43-W282FN5KYUHRYWRYD2	TCGGATCAGAAGATTGAGGGTTCGAATCCCTTCGTGGTTGCCA	3'-halves
tRF-42-YDLBRY73WEK5KKOV2	TTAACCGAAAGGTTGGTGGTTCGATCCACCCAGGGACGCCA	3'-halves
tRF-33-Q99P9P9NH57SD3	GCTTCTGTAGTGTAGTGGTTATCACGTTTCGCCT	5'-halves
tRF-34-LR6XQ6S8V0J8HW	CGCCCCGCTAGCTCAGTCCGTAGAGCATGGGACT	5'-halves
tRF-34-LZNL7L73V6M9I3	CGCTTCTGTAGTGTAGTGGTTATCACGTTTCGCCT	5'-halves
tRF-35-Q99P9P9NH57S36	GCTTCTGTAGTGTAGTGGTTATCACGTTTCGCCTCA	5'-halves
tRF-34-Q99P9P9NH57S15	GCTTCTGTAGTGTAGTGGTTATCACGTTTCGCCTC	5'-halves
tRF-32-Q99P9P9NH57SJ	GCTTCTGTAGTGTAGTGGTTATCACGTTTCGCC	5'-halves
tRF-28-8W1W18YMENDM	TCCGTAGTGTAGTGGTTATCACGTTTCGC	i-tRF
tRF-26-7JPJ60MV9JD	GTGGCGCAGCGGAAGCGTGCTGGGCC	i-tRF
tRF-25-6VF8DHXY6R	GGCGCAGCGGAAGCGTGCTGGGCC	i-tRF
tRF-28-4W9MVKS4I7D4	CTCGTTGGTCTAGGGGTATGATTCTCGG	i-tRF
tRF-18-R2YJ8B04	GGGGATTAGCTCAAATGG	i-tRF
tRF-16-R2YJ8BE	GGGGATTAGCTCAAAT	i-tRF
tRF-30-924ZDRJKW4R9	TGGGACTCTTAATCCAGGGTTCGTGGGTTC	i-tRF
tRF-29-QSZ34KRQ59J4	GCTCGTTGGTCTAGGGGTATGATTCTCGG	i-tRF
tRF-22-YO9LON4V3	TTCAATGGTAGAATTCTCGCT	i-tRF
tRF-26-18LPMBQ4NKD	AGTGGCGCAGCGGAAGCGTGCTGGGC	i-tRF
tRF-23-YRL51NLED3	TTCCCCGCACAGGTTTCAATCCT	i-tRF
tRF-32-I7XUK87SIRMJ4	ATTCTTGCGACCCGGGTTTCGATTCCCGGGCGG	i-tRF
tRF-27-WJ9X0UD394N	TCGGCTGTTAACCGAAAGGTTGGTGGT	i-tRF
tRF-30-8HM2OSRNLNKS	TCACGCGGGAGACCGGGGTTTCGATTCCCCG	i-tRF
tRF-23-R2YJ8B9LDS	GGGGATTAGCTCAAATGGTAGAG	i-tRF

Table SII. Continued.

tsRNA	Fragment sequence	Type
tRF-30-4W9MVKS4I7MN	CTCGTTGGTCTAGGGGTATGATTCTCGGTT	i-tRF
tRF-27-4W9MVKS4I7K	CTCGTTGGTCTAGGGGTATGATTCTCG	i-tRF
tRF-25-R918VBY9PY	GGTTCAGTGGTAGAATTCTCGCCTG	i-tRF
tRF-30-IKE7UMKKSWRN	ATGGGACTCTTAATCCCAGGGTCGTGGGTT	i-tRF
tRF-27-1EWJQ72S3HM	AGGATTCGGCGCTCTCACCGCCGCGGC	i-tRF
tRF-29-QSZ34KRQ59JM	GCTCGTTGGTCTAGGGGTATGATTCTCGC	i-tRF
tRF-28-QSZ34KRQ590K	GCTCGTTGGTCTAGGGGTATGATTCTCG	i-tRF
tRF-30-J09HJHOJ7IR1	CAGAGTGGCGCAGCGGAAGCGTGCTGGGCC	i-tRF
tRF-22-299DWUHSN	CACTCTGGACTCTGAATCCGGT	i-tRF
tRF-26-K87SERM492B	CCCGGGTTCGACTCCCGGTGTGGGAA	i-tRF
tRF-28-D89NJ4S2I7DM	AATGGTGGTTCAGTGGTAGAATTCTCGC	i-tRF
tRF-20-7HFK8SR9	GTGCGAGAGGTCCCGGGTTC	i-tRF
tRF-26-HWH3RXSINHE	ATCGTATAGTGGTTAGTACTCTGCGT	i-tRF
tRF-19-Z3RZ182X	TTGGTGGTTTAGTGGTAGA	i-tRF
tRF-22-Z3RZ18VBQ	TTGGTGGTTTAGTGGTAGAATT	i-tRF
tRF-27-18LPMBQ4NKJ	AGTGGCGCAGCGGAAGCGTGCTGGGCC	i-tRF
tRF-29-5SVP9N15WVIP	GATCGTATAGTGGTTAGTACTCTGCGCTG	i-tRF
tRF-25-Z3RZ18VBY9	TTGGTGGTTTAGTGGTAGAATTCTC	i-tRF

tRF, transfer RNA-derived fragment.