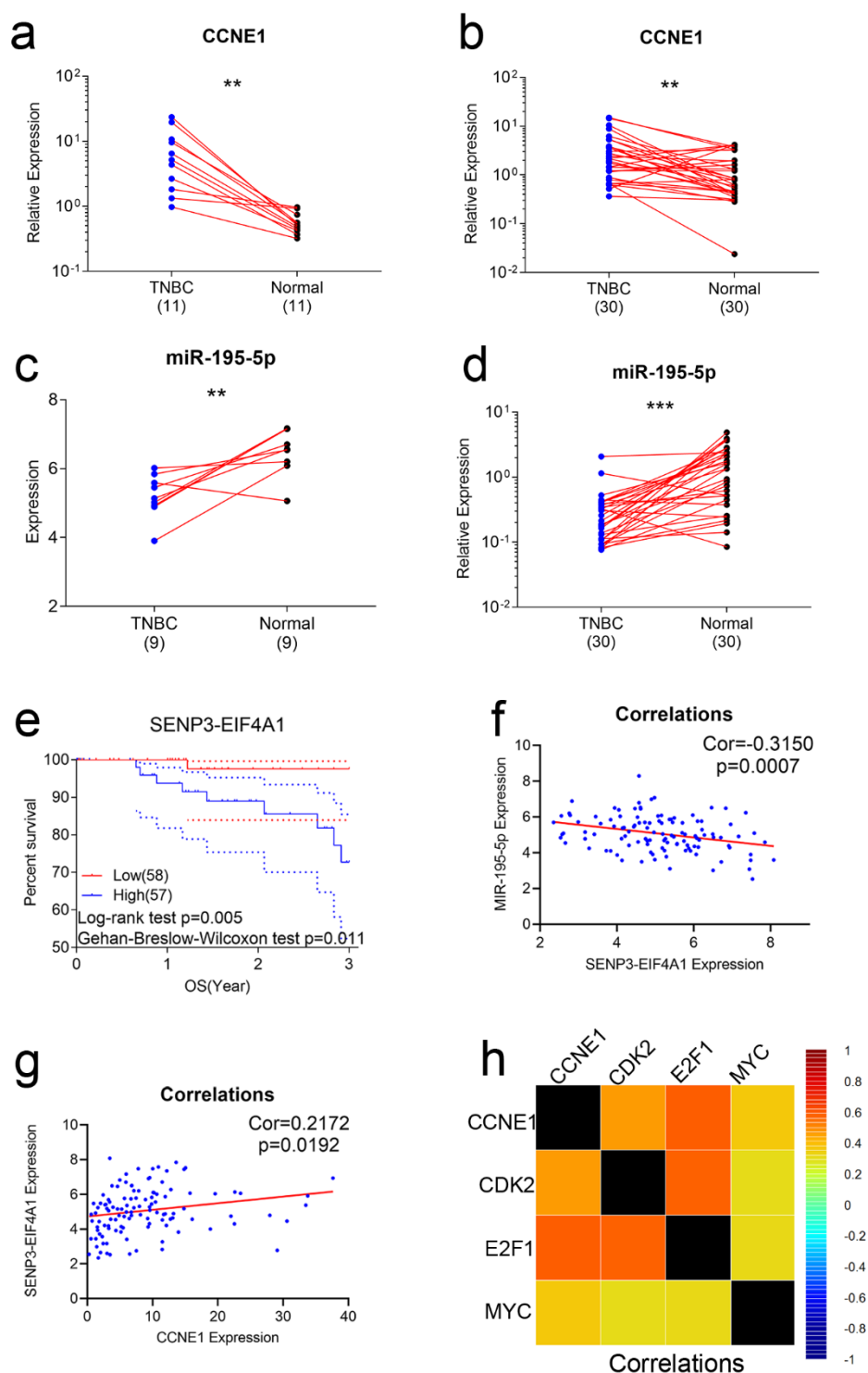


**Fig. S1**



**Fig. S1** (a and b) CCNE1 expression in TNBC and paired normal breast samples from TCGA BRCA database ( $n=11$ ) (a) and clinical samples ( $n=30$ ) (b). (c and d) CCNE1 expression in TNBC and paired normal breast samples from TCGA BRCA database ( $n=9$ ) (c) and clinical samples ( $n=30$ ) (d). (e) SENP3-EIF4A1 expression related 3-year overall survival ( $n=115$ ) in TNBC. (f) SENP3-EIF4A1 and miR-195-5p expression correlations in TNBC from TCGA ( $N=113$ ). (g) SENP3-EIF4A1 and CCNE1 expression correlations in TNBC from TCGA ( $N=116$ ). (h) CCNE1 and related CKD2, E2F1 and c-Myc expression correlations in TNBC from TCGA.