

INTRACELLULAR PROSTAGLANDIN E2 CONTRIBUTES TO HYPOXIA-INDUCED PROXIMAL TUBULAR CELL DEATH.

Short title: INTRACELLULAR PGE₂ IN HYPOXIC CELL DEATH

Coral García-Pastor*, Selma Benito-Martínez*, Ricardo J. Bosch*, Ana B. Fernández-Martínez**¹,
Francisco J. Lucio-Cazaña*¹

*Departamento de Biología de Sistemas, Universidad de Alcalá, Alcalá de Henares, Madrid

** Departamento de Biología, Universidad Autónoma de Madrid, Madrid

¹ These authors contributed equally to this work

Address correspondence to:

Ana Belén Fernández-Martínez, Ph. D.

Departamento de Biología

Universidad Autónoma de Madrid

28049 Madrid

Phone: +34 91 497 8142

e-mail: anab.fernandez@uam.es

Supplementary Information File

1. Treatment with BG does not modify cell shape: phalloidin (green)/DAPI (blue) staining
2. a) Full length blot corresponding to the inset in Fig 2 a, lower panel, left: PGT and β -actin; b) Full length blot corresponding to the inset in Fig. 2 b: 15-PGDH and β -actin; c) Full length blots corresponding to Fig 2 e: Bcl-2, Bax and β -actin; d) Kinetics of cell death (trypan blue dye exclusion test) during reoxygenation after 24 h under hypoxia (1% O₂) and absence of effect of PGT inhibitor bromocresol green (BG). Cells were pre-incubated for 1 h with 50 μ M BG inhibitors of the pathway. Each bar represents the mean \pm SD of 3 different experiments **P* < 0.01 vs control.
3. a) Full length blot corresponding to Fig. 3 a (COX-2 and β -actin) and its inset (mPGES-1 and β -actin); b and c) Full length blots corresponding to Fig. 3 d and e: COX-2 and β -actin; d) Full length blot corresponding to the inset in Fig. 3 f: HIF-1 α and β -actin

Figure supplementary 1

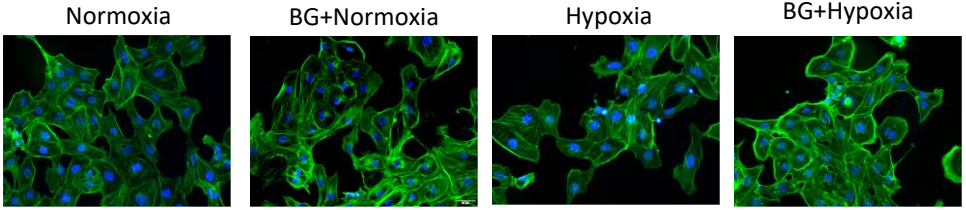
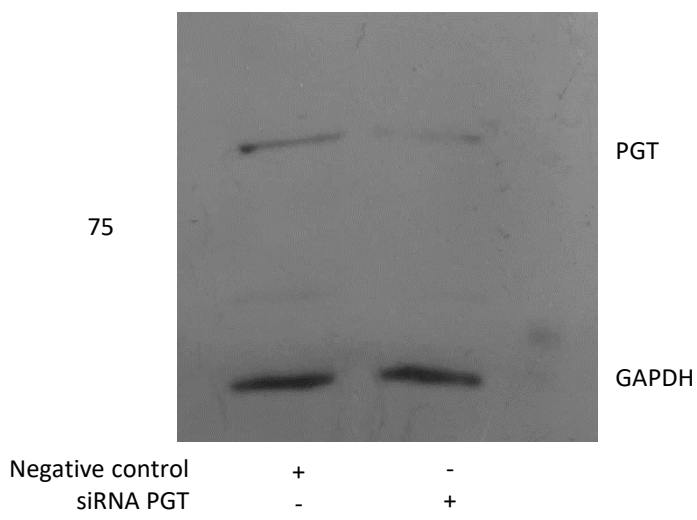
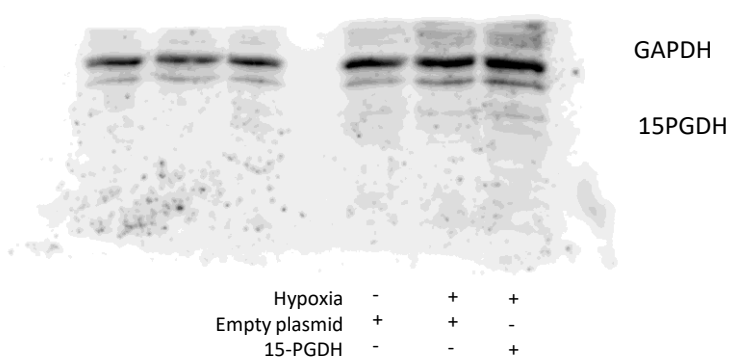


Figure supplementary 2

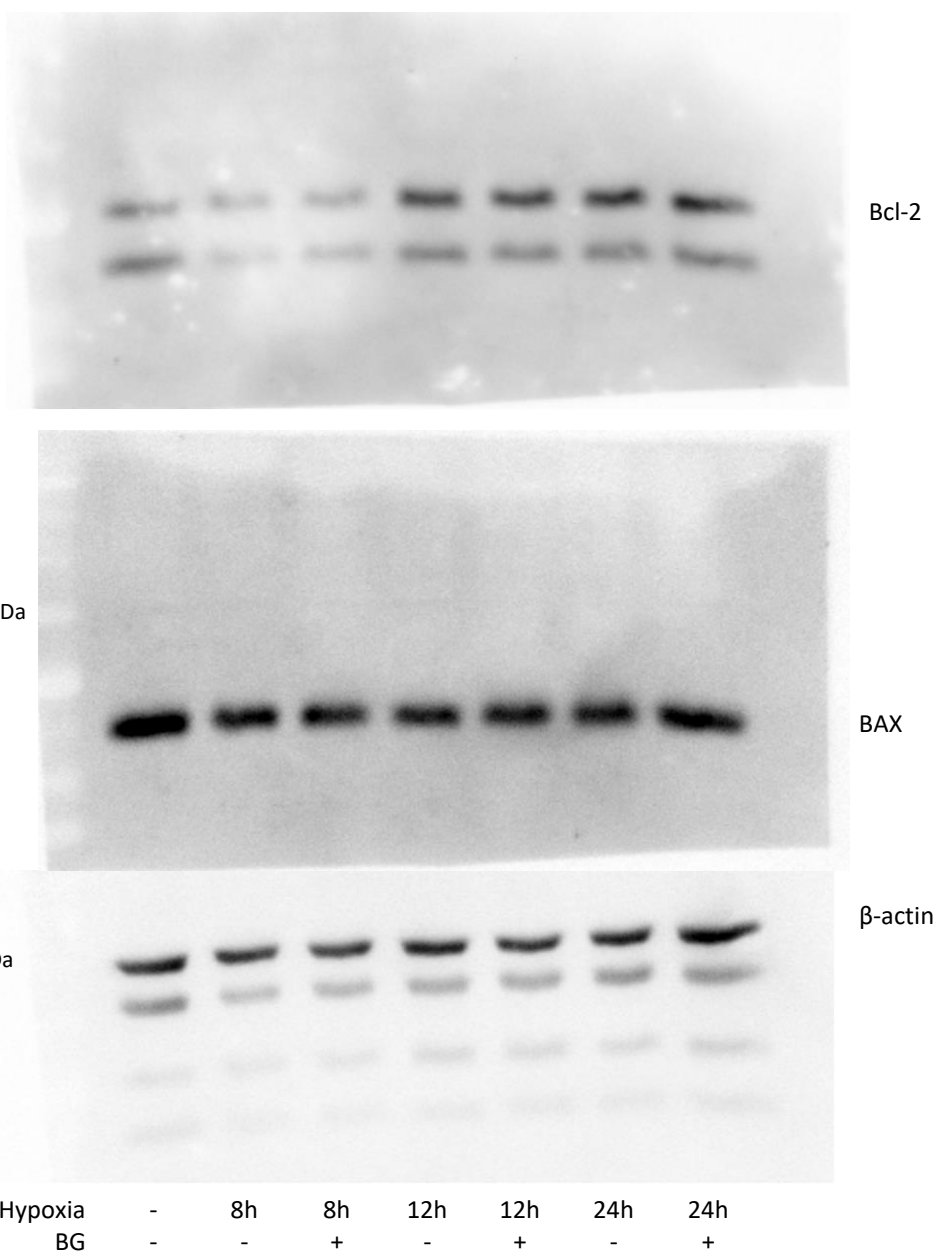
a)



b)



c)



d)

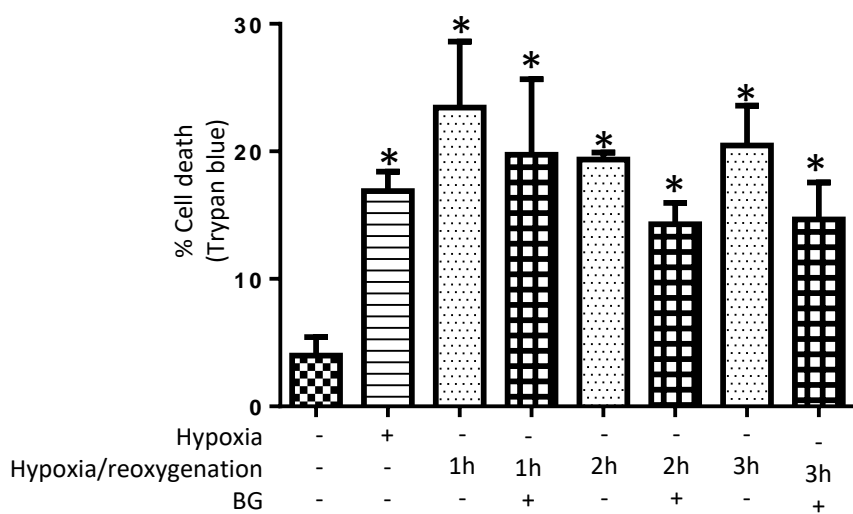


Figure supplementary 3

