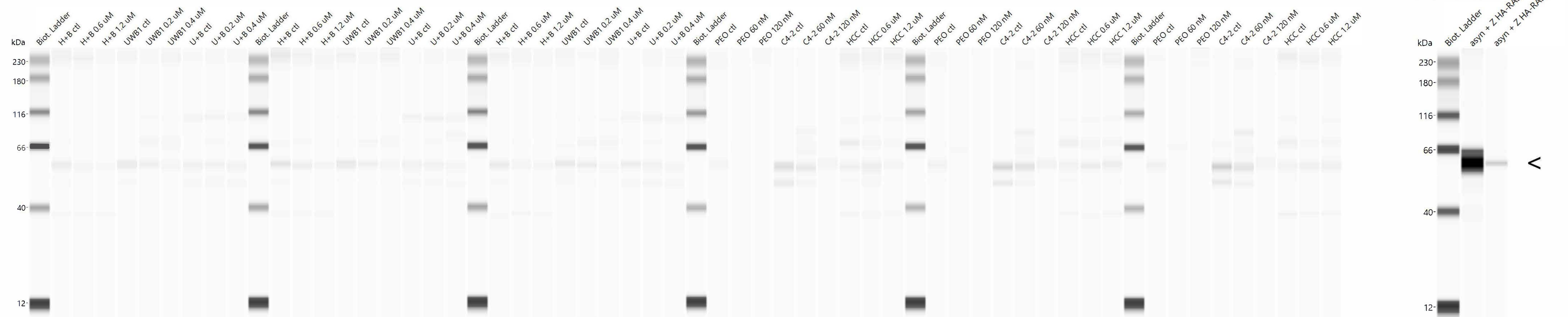
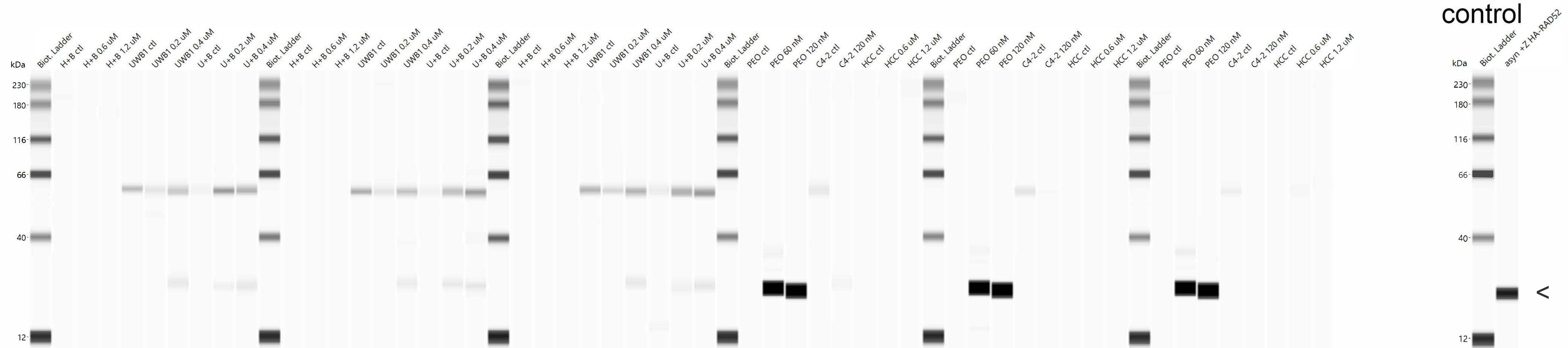




# Figure 6 A. RAD52



# Figure 6 B. $\gamma$ H2AX



+zeocin  
control

^

# C. Actin

# Figure 6

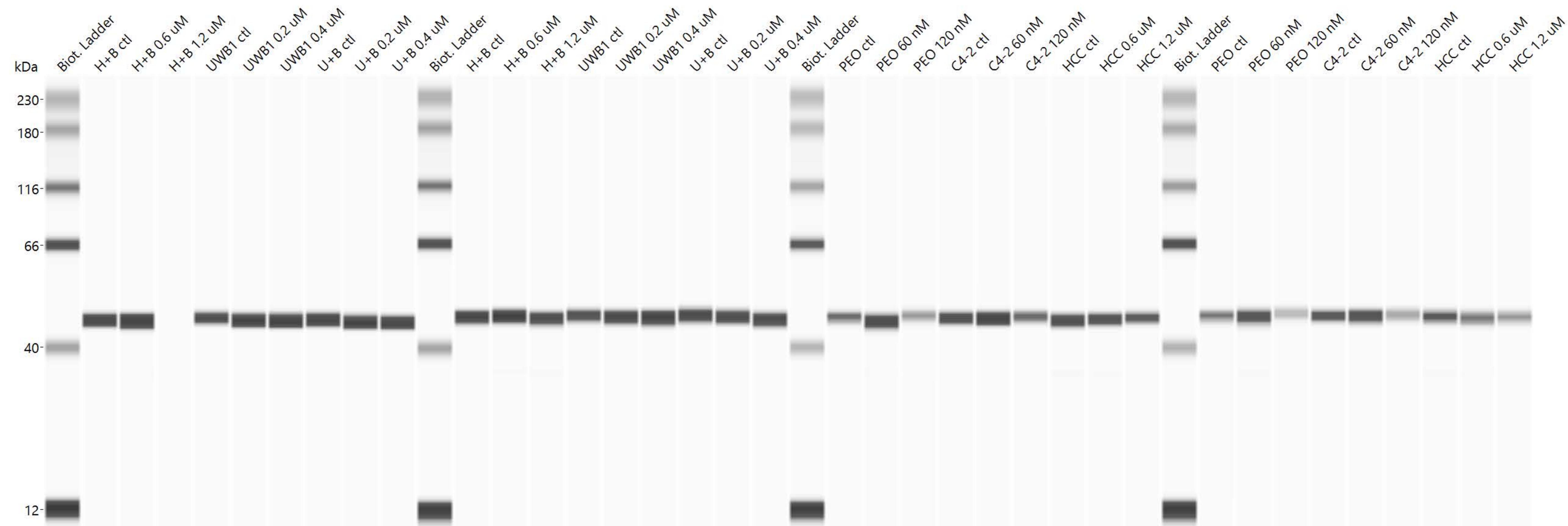
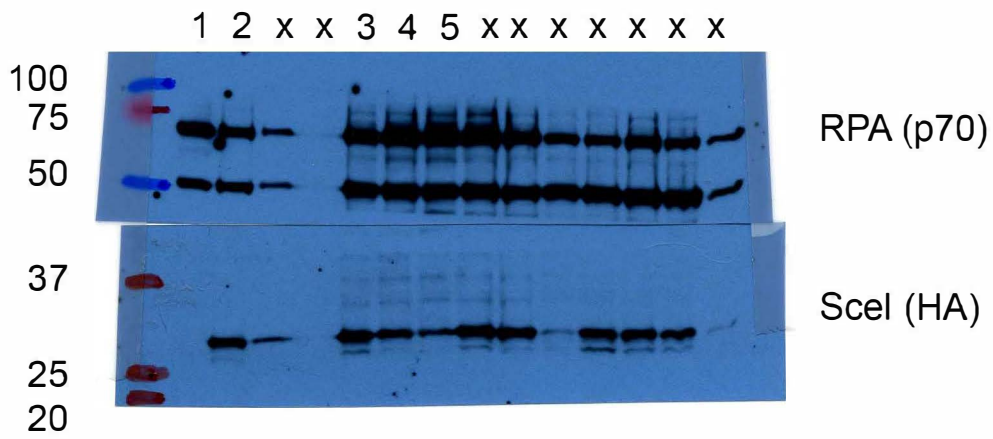


Figure 7C

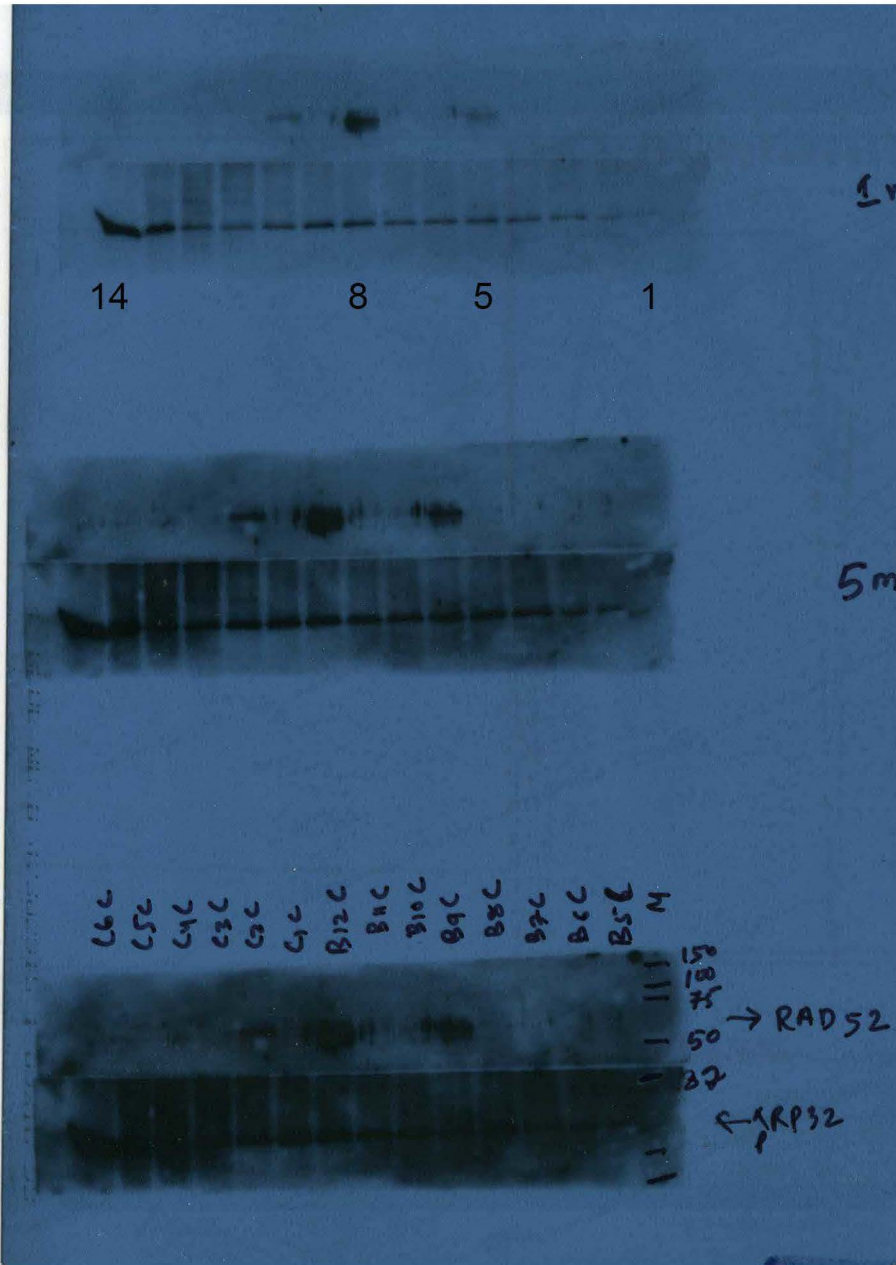


Lanes 1 to 5 were used to prepare the figure.

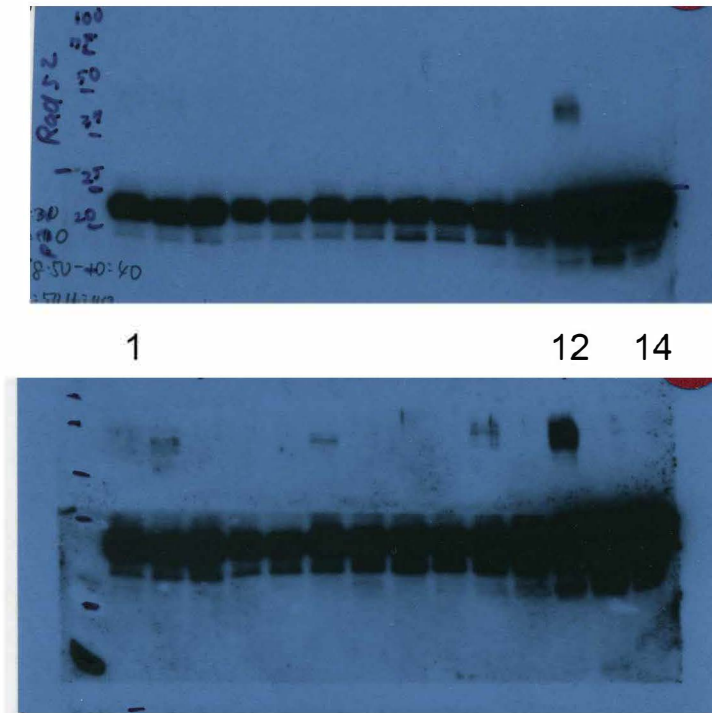
Image of X-ray film was obtained by scanning each film.

Figure 9

Control



MTX at 3 nM



RAD52

RPA (p32)

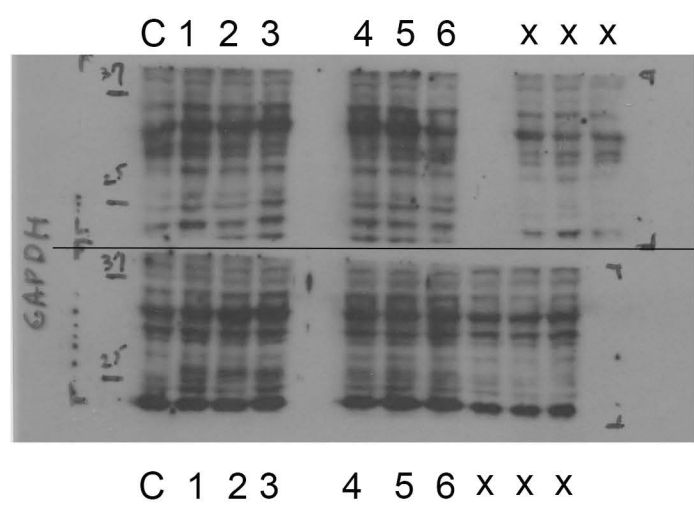
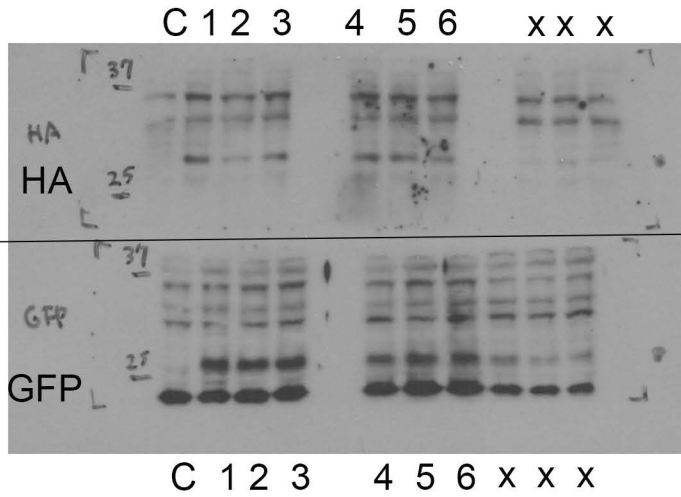
RAD52

RPA (p32)

Control and treated with 3 nM MTX  
two exposures are shown for each:  
1 min (top) and 5 min (bottom)

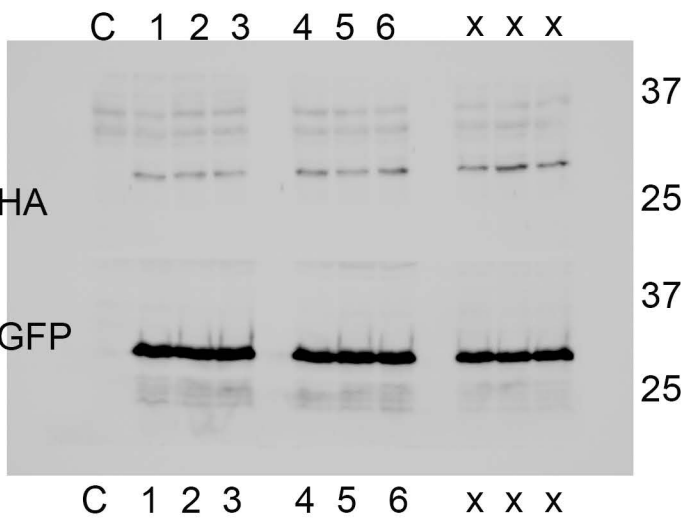
Supplemental Figure 4

A. SSA

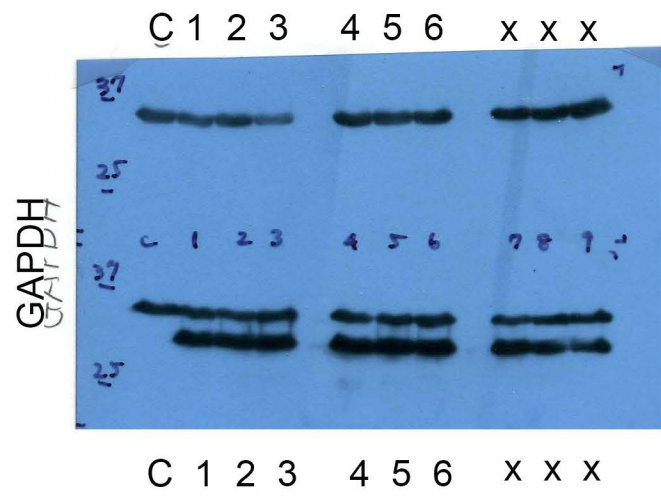


X-ray film

B. HR



ChemDoc

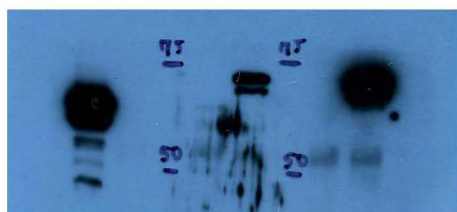


X-ray film

Image of X-ray film was obtained by scanning each film.

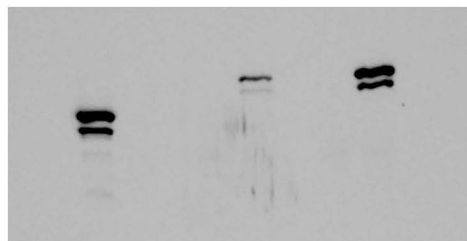
# Supplemental Figure 5

A.



X-ray film

The same blot was exposed to the film and scanned by ChemDoc.



BioRad ChemDoc

1 2 x x 3 4

ChemDoc image was used.

1 and 3 : GFP-RAD51

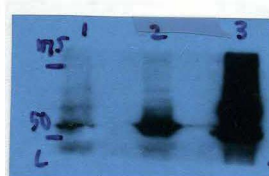
2 and 4 : GFP-RAD52

Image of X-ray film was obtained by scanning each film.

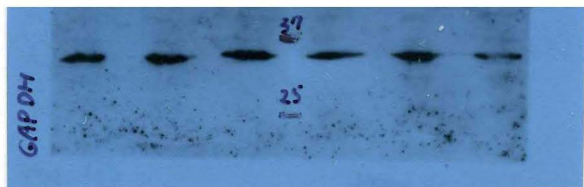
B.

X-ray film

BioRad ChemDoc



The same blot was exposed to the film and scanned by ChemDoc.



x x x 1 2 3

Image from ChemDoc was used for GFP western blot and lanes 1,2 ,3 from X-ray film were used for GAPDH western blot.

Image of X-ray film was obtained by scanning each film.