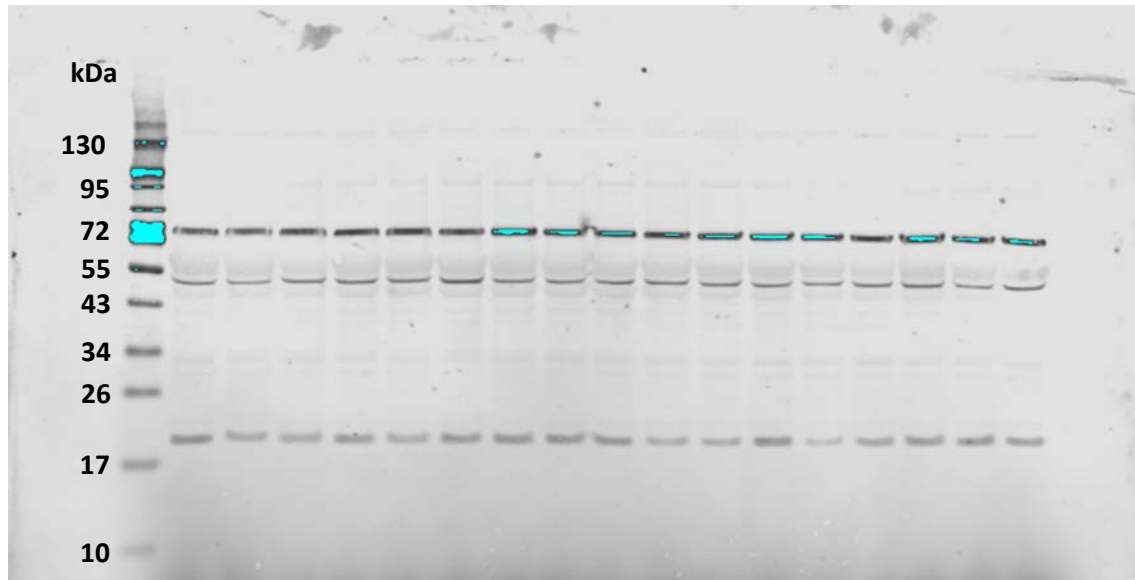


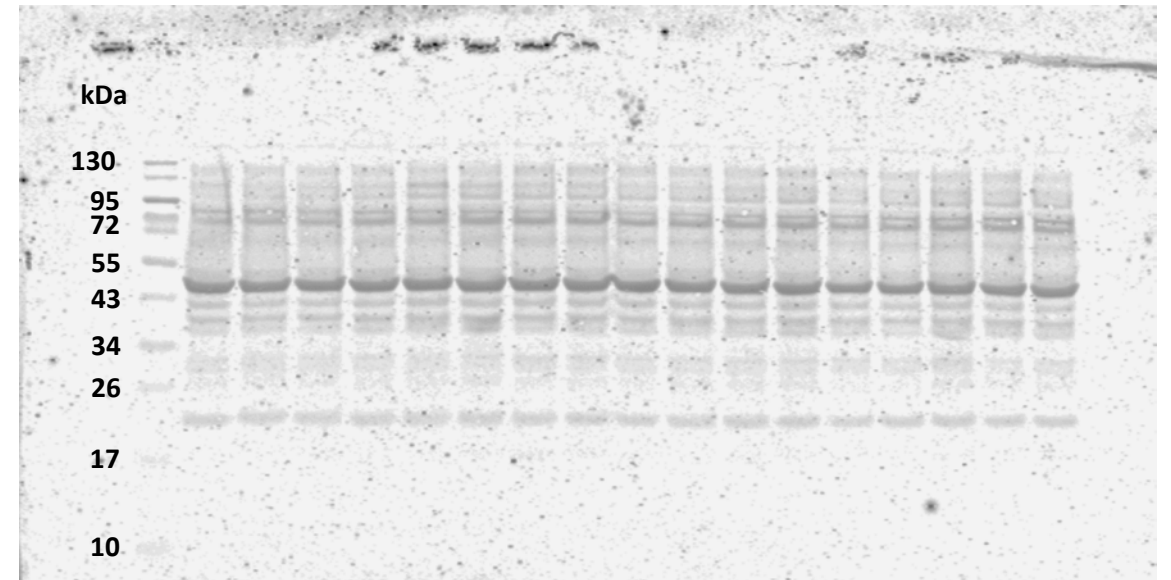
Western blotting image gels

Hypothalamus

CRF
~21 kDa



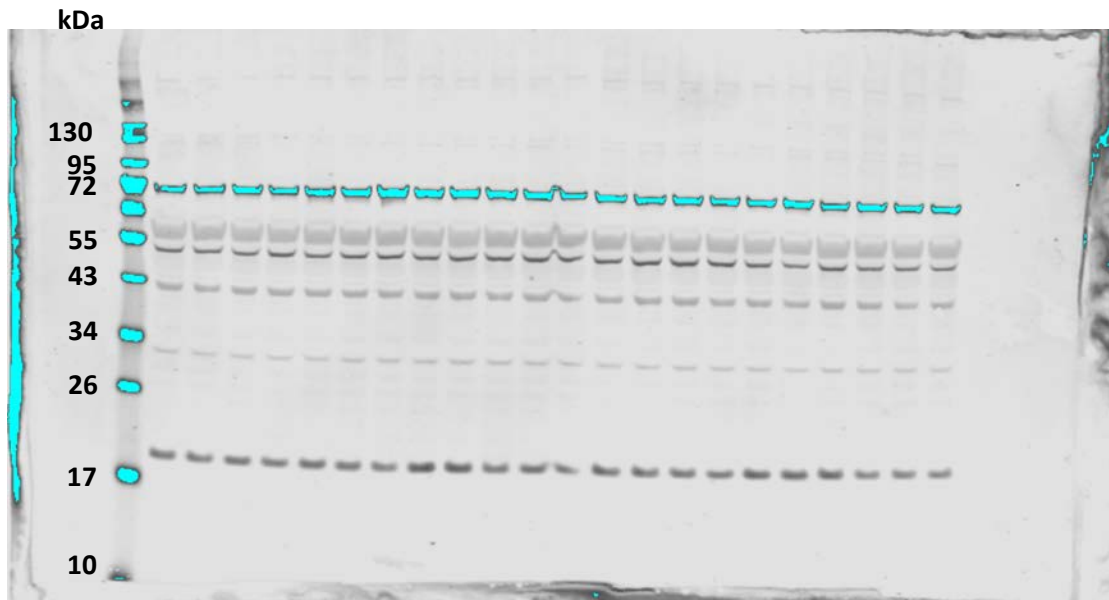
β -actin
42 kDa



Western blotting image gels

Hippocampus

CRF
~21 kDa



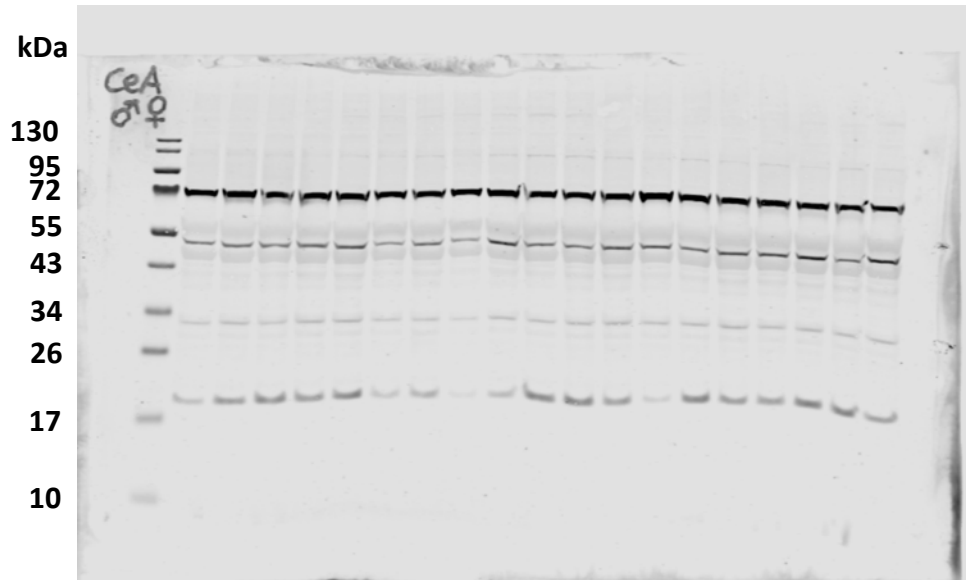
β -actin
42 kDa



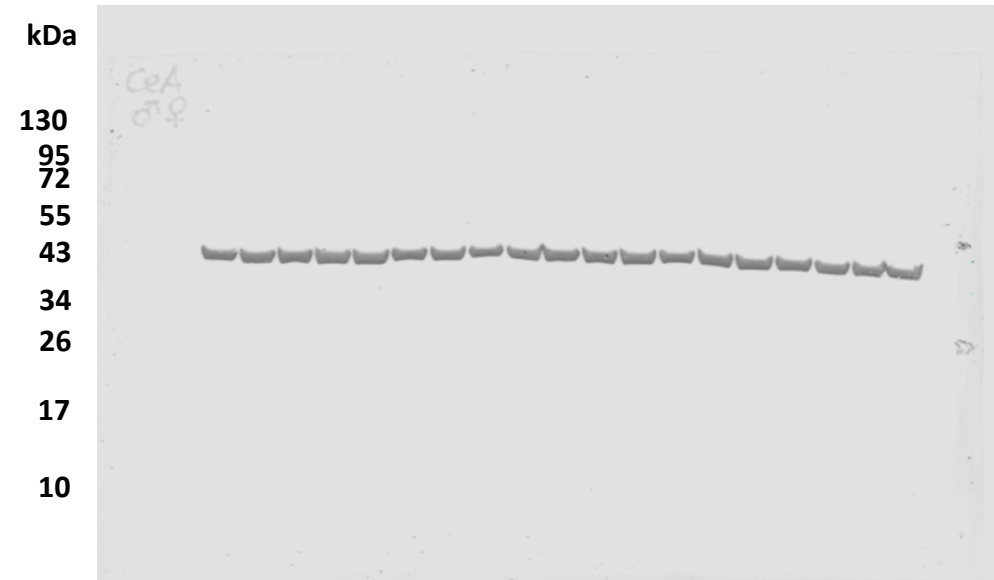
Western blotting image gels

Central nucleus of amygdala

CRF
~21 kDa



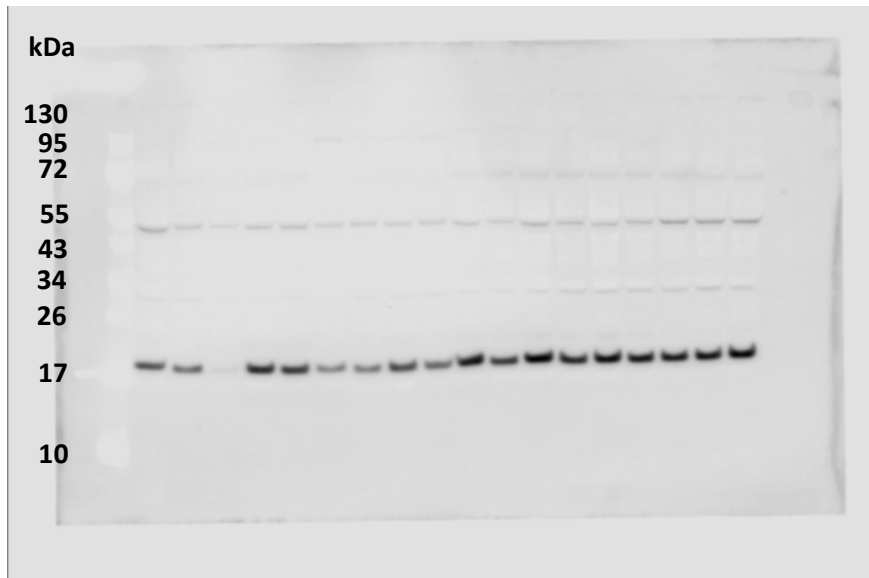
β -actin
42 kDa



Western blotting image gels

Ventral tegmental area

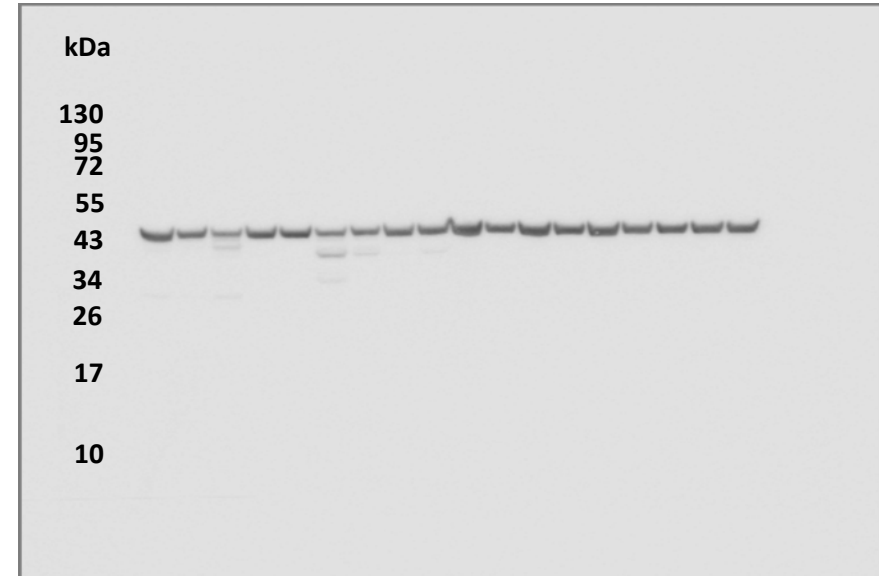
CRF
~21 kDa



kDa

130
95
72
55
43
34
26
17
10

β -actin
42 kDa



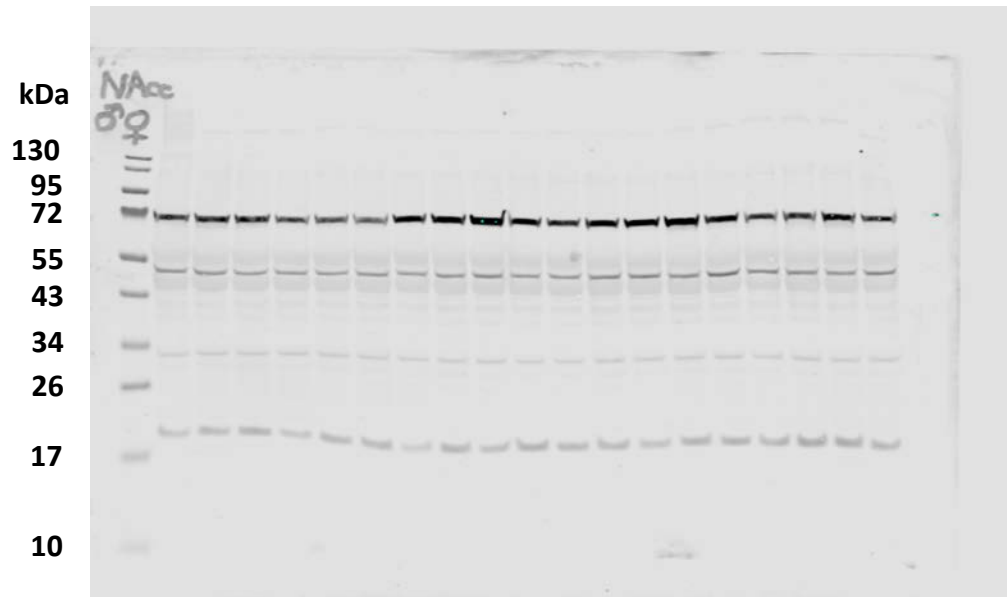
kDa

130
95
72
55
43
34
26
17
10

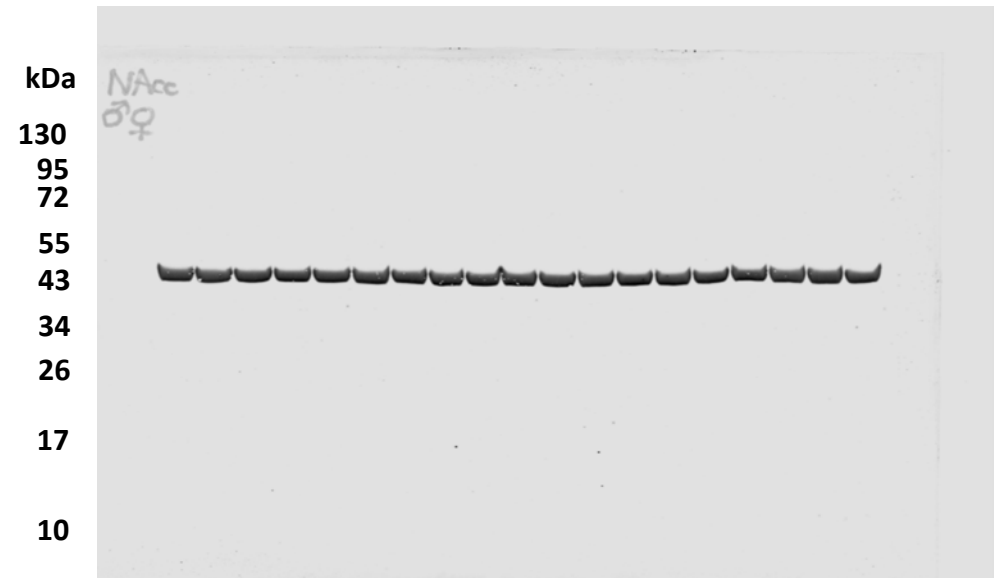
Western blotting image gels

Nucleus accumbens

CRF
~21 kDa



β -actin
42 kDa

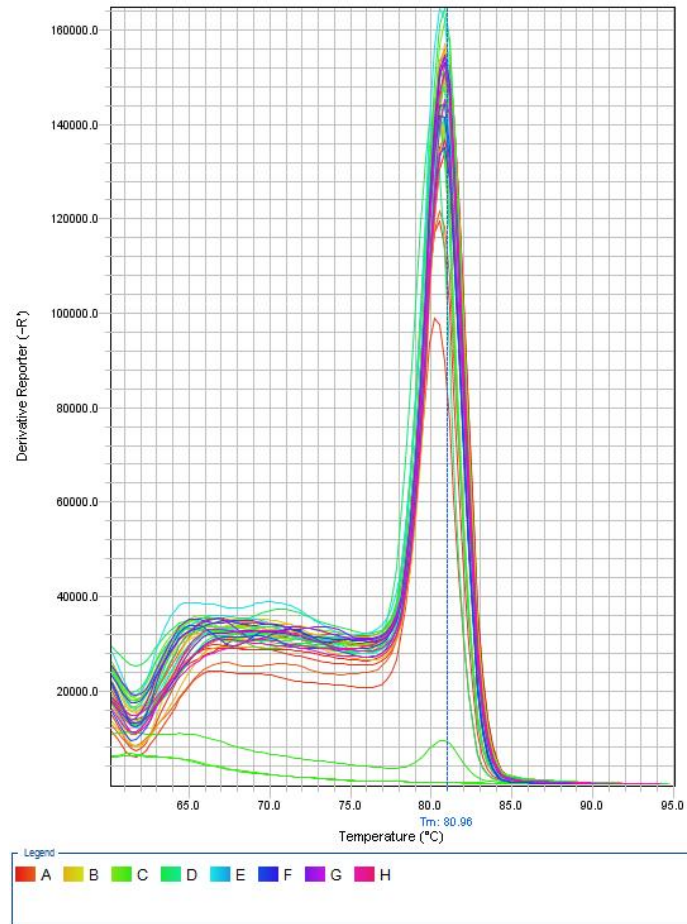


qPCR curves

Hypothalamus

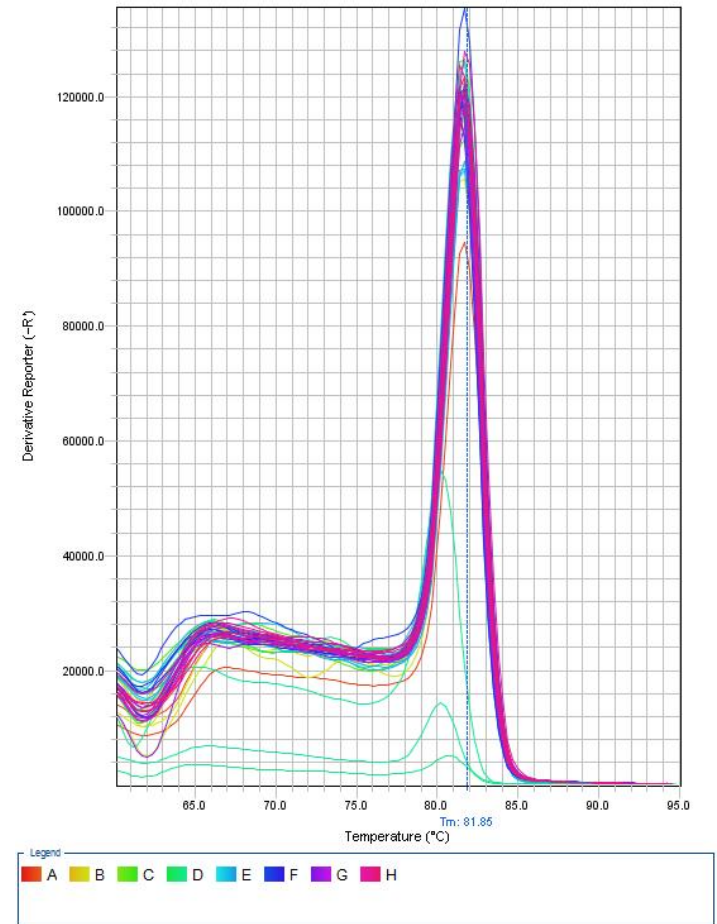
CRF

Melt Curve



GAPDH

Melt Curve

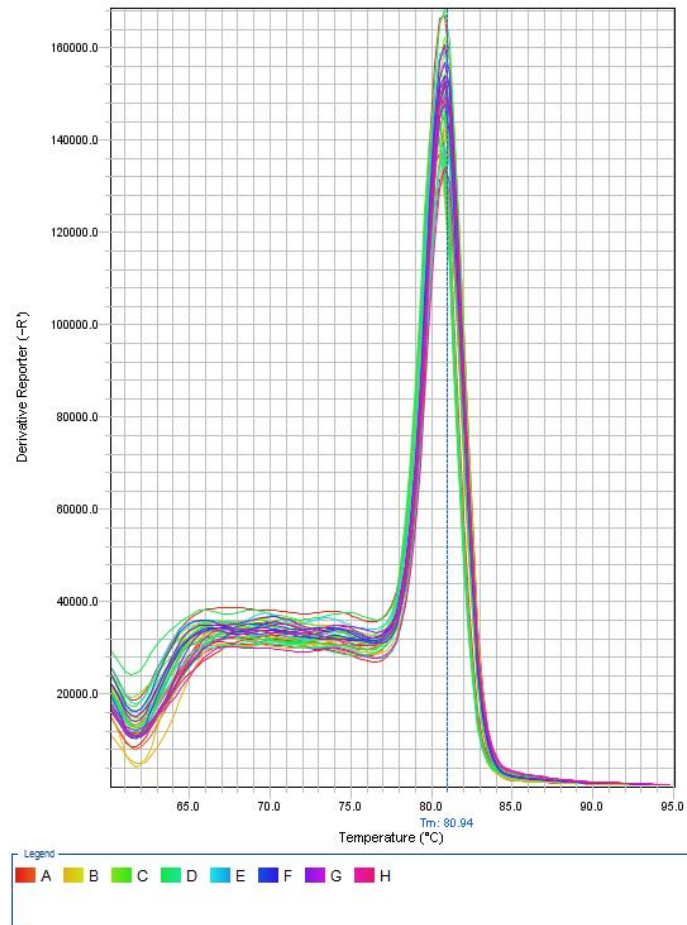


qPCR curves

Hippocampus

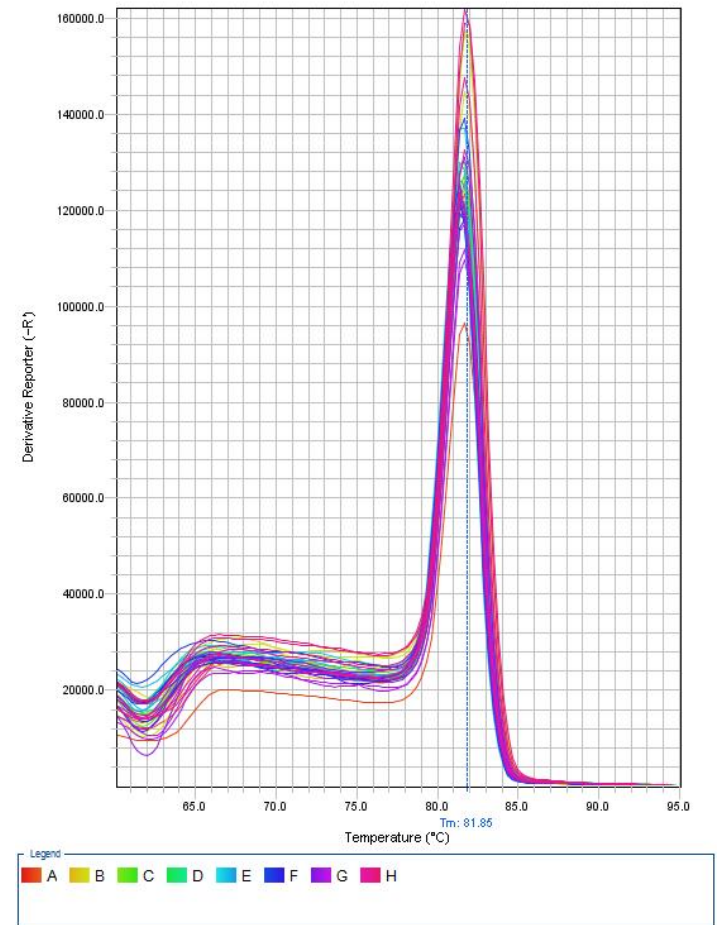
CRF

Melt Curve



GAPDH

Melt Curve

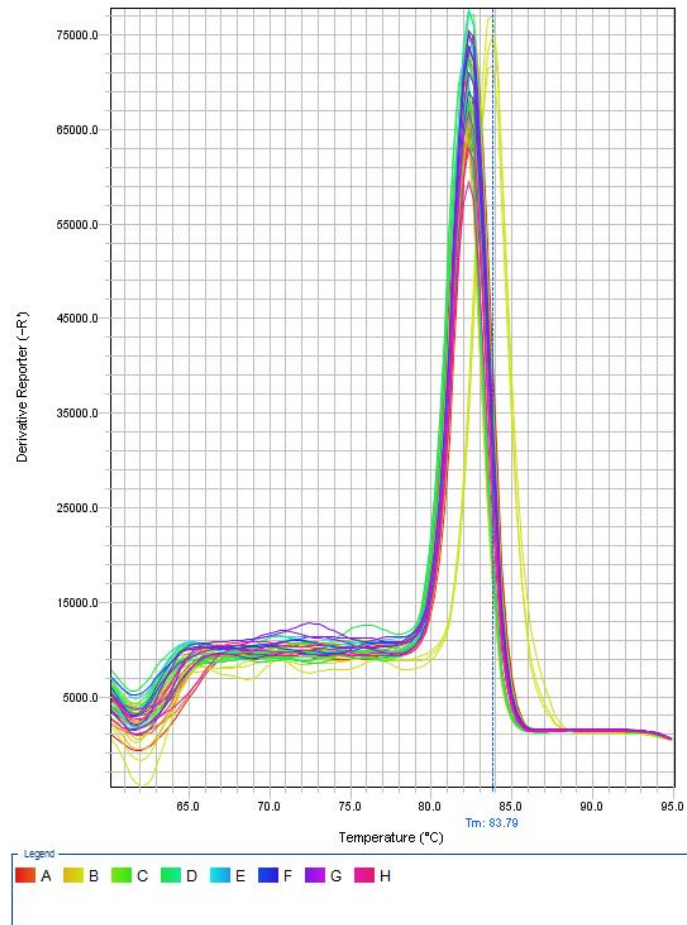


qPCR curves

Central nucleus of amygdala

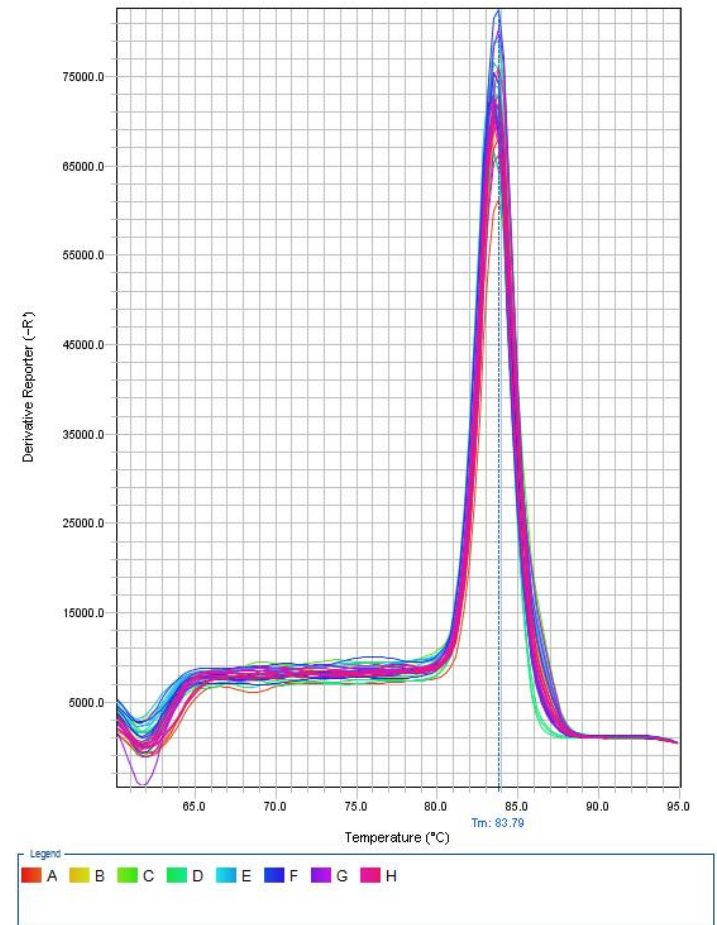
CRF

Melt Curve



GAPDH

Melt Curve

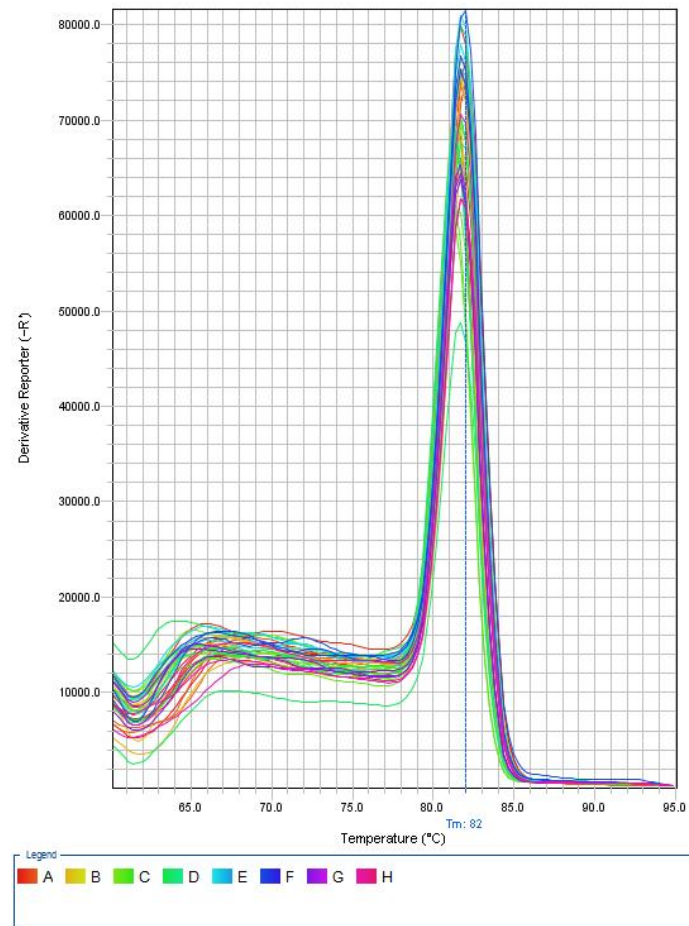


qPCR curves

Ventral tegmental area

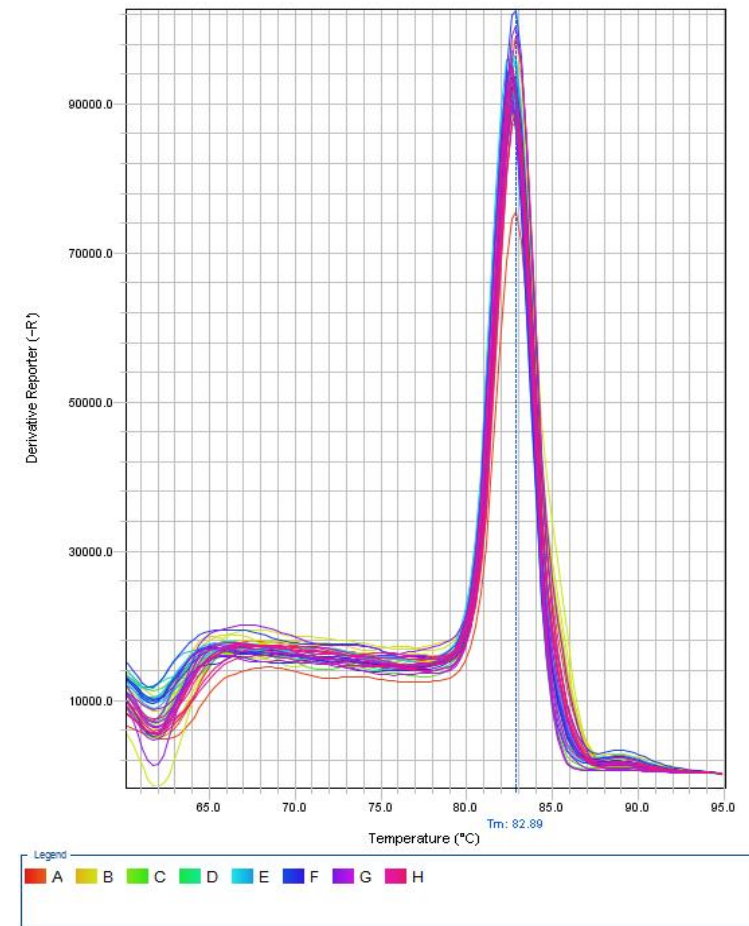
CRF

Melt Curve



GAPDH

Melt Curve

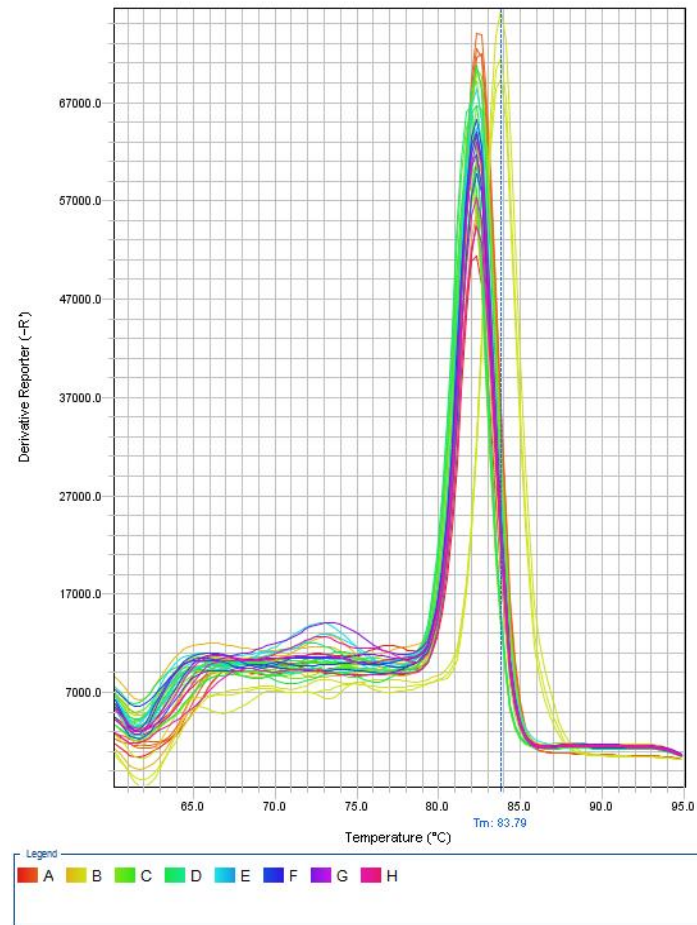


qPCR curves

Nucleus accumbens

CRF

Melt Curve



GAPDH

Melt Curve

