

Fig. S1: Main effects of connectivity of the seeds

a) left MTG, b) left Thalamus, c) Broca's region, d) left AG. Red-coloured voxels indicate significant positive correlations, blue significant negative correlations. All images are thresholded at $p < .05$ (FWE-corrected at cluster-level; cluster forming threshold at voxel level: $p < .001$)

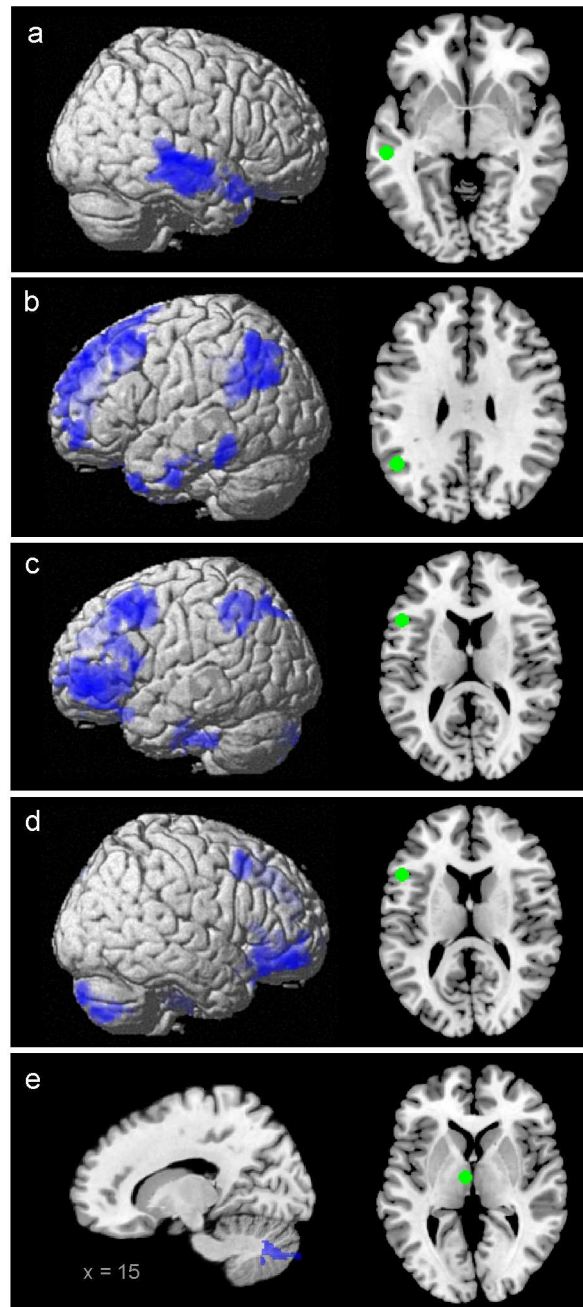


Fig. S2: Pattern of decreased connectivity without global signal regression

Regions displaying decreased connectivity with the four seeds (green) in patients. a) MTG, b) AG, c) & d) IFG, e) thalamus. All images are thresholded at $p < .01$ with an extent threshold of 500 voxels. Note that all regions displayed in Fig. 1 are replicated in this analysis.

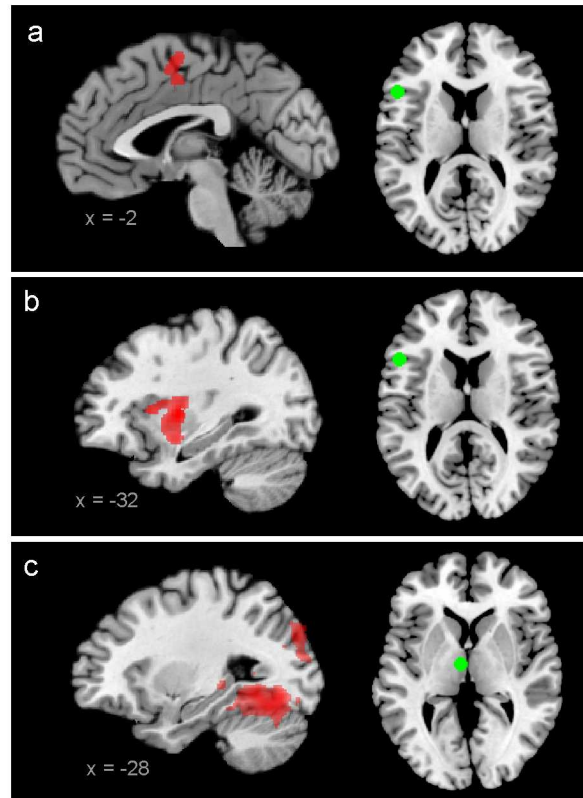


Fig. S3: Pattern of increased connectivity without global signal regression

Regions displaying increased connectivity with the seeds (green) in patients. a) & b) IFG, c) thalamus. All images are thresholded at $p < .01$ with an extent threshold of 500 voxels. Note that all regions displayed in Fig. 2 are replicated in this analysis.