

Differential reprogramming of breast cancer subtypes in 3D cultures and implications for sensitivity to targeted therapy

Esmee Koedoot^{1,5}, Liesanne Wolters¹, Marcel Smid², Peter Stoilov³, Gerhard A. Burger¹, Bram Herpers⁴, Kuan Yan⁴, Leo S. Price⁴, John W.M. Martens², Sylvia E. Le Dévédec¹, Bob van de Water¹

¹ Division of Drug Discovery and Safety, LACDR, Leiden University, the Netherlands

² Department of Medical Oncology and Cancer Genomics Netherlands, Erasmus MC Cancer Institute, Erasmus University Medical Center, Rotterdam, the Netherlands

³ Department of Biochemistry and Cancer Institute, Robert C. Byrd Health Sciences Center, West Virginia University, Morgantown, USA

⁴ Ocello, Leiden, The Netherlands.

⁵ To whom correspondence should be addressed

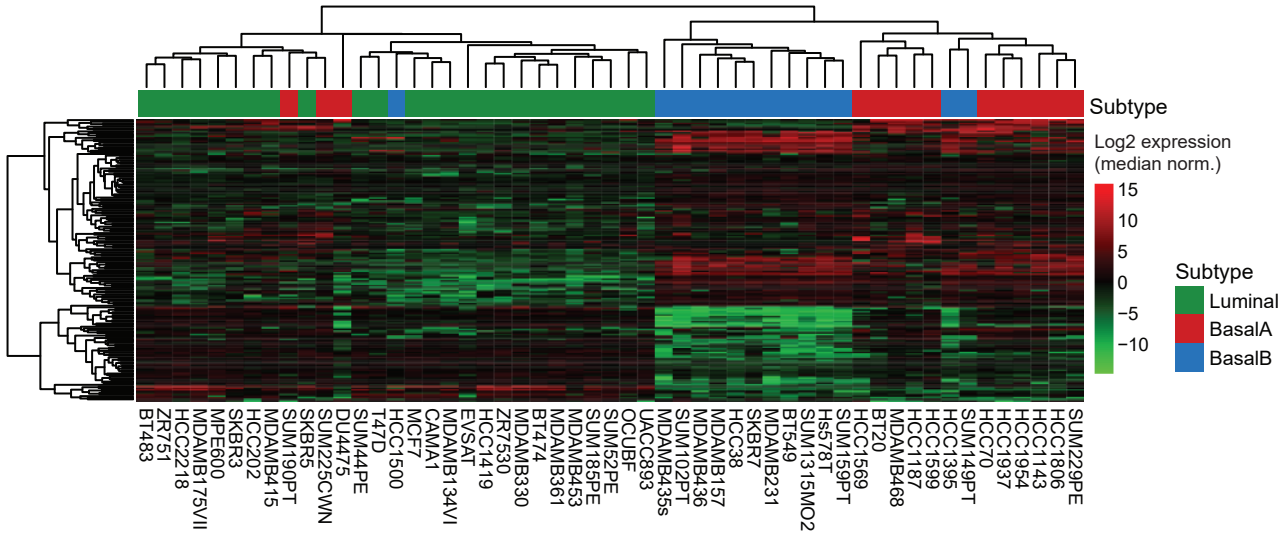
⁵Address of correspondence:

Esmee Koedoot
Division of Drug Discovery and Safety
Leiden Academic Centre for Drug Research
Leiden University
2300 RA Leiden
The Netherlands
Tel: +31-71-5276223
Fax: +31-71-5274277
e.koedoot@lacdr.leidenuniv.nl

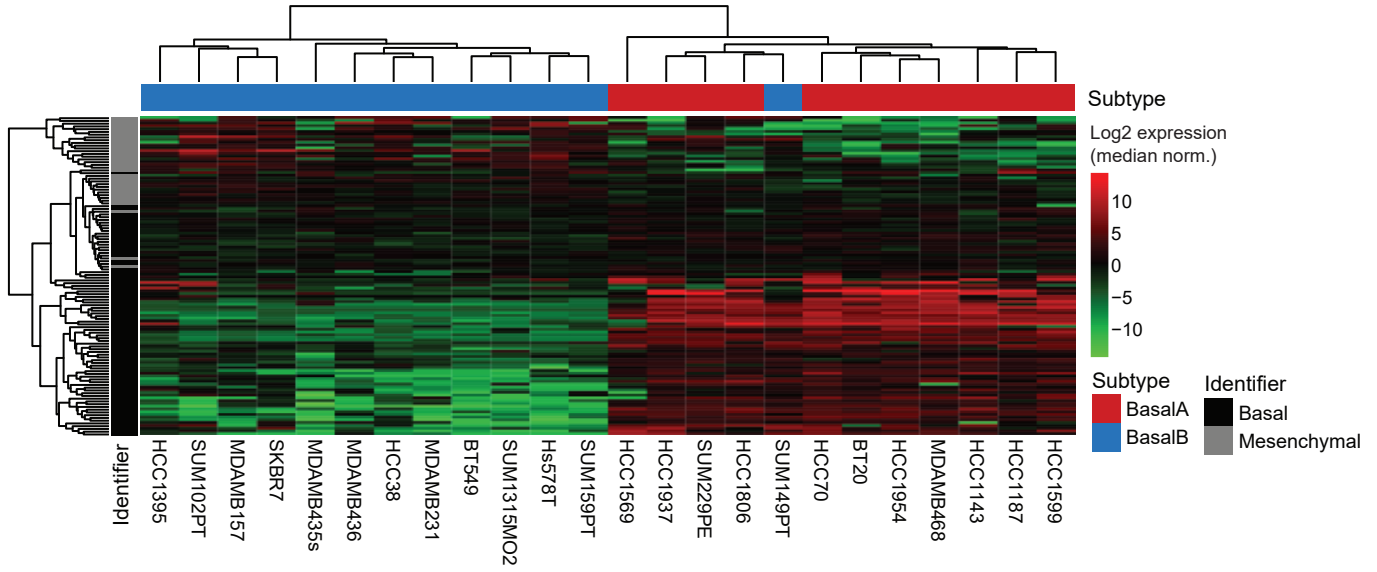
The authors declare no potential conflicts of interest.

Supplementary Figure 1

A

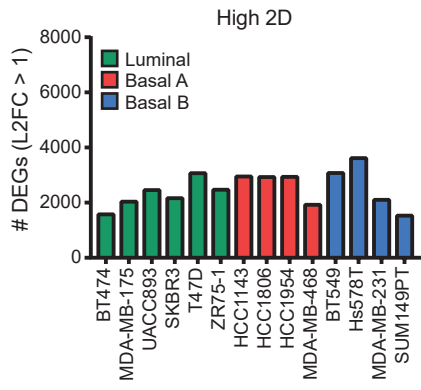


B

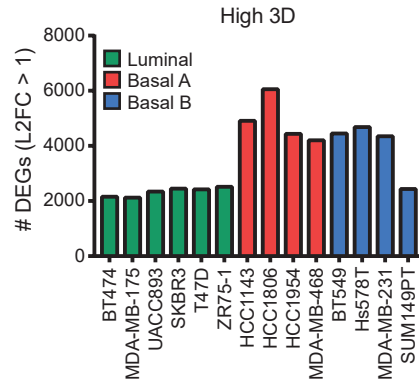


Supplementary Figure 2

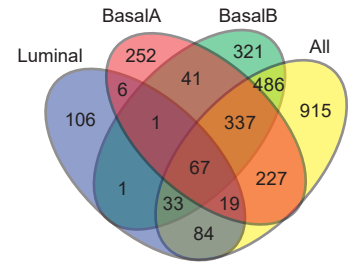
A



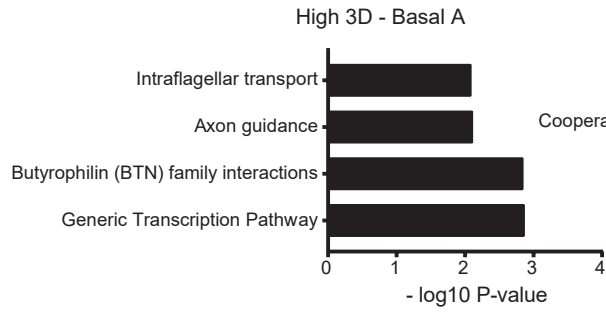
B



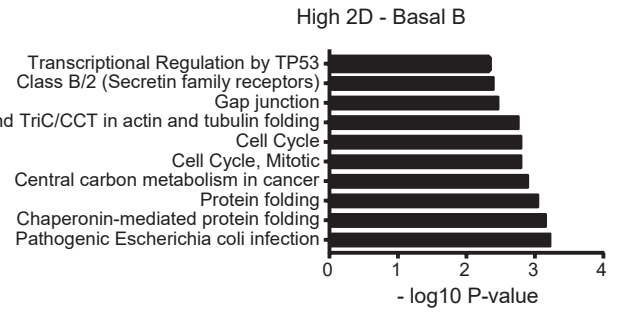
C



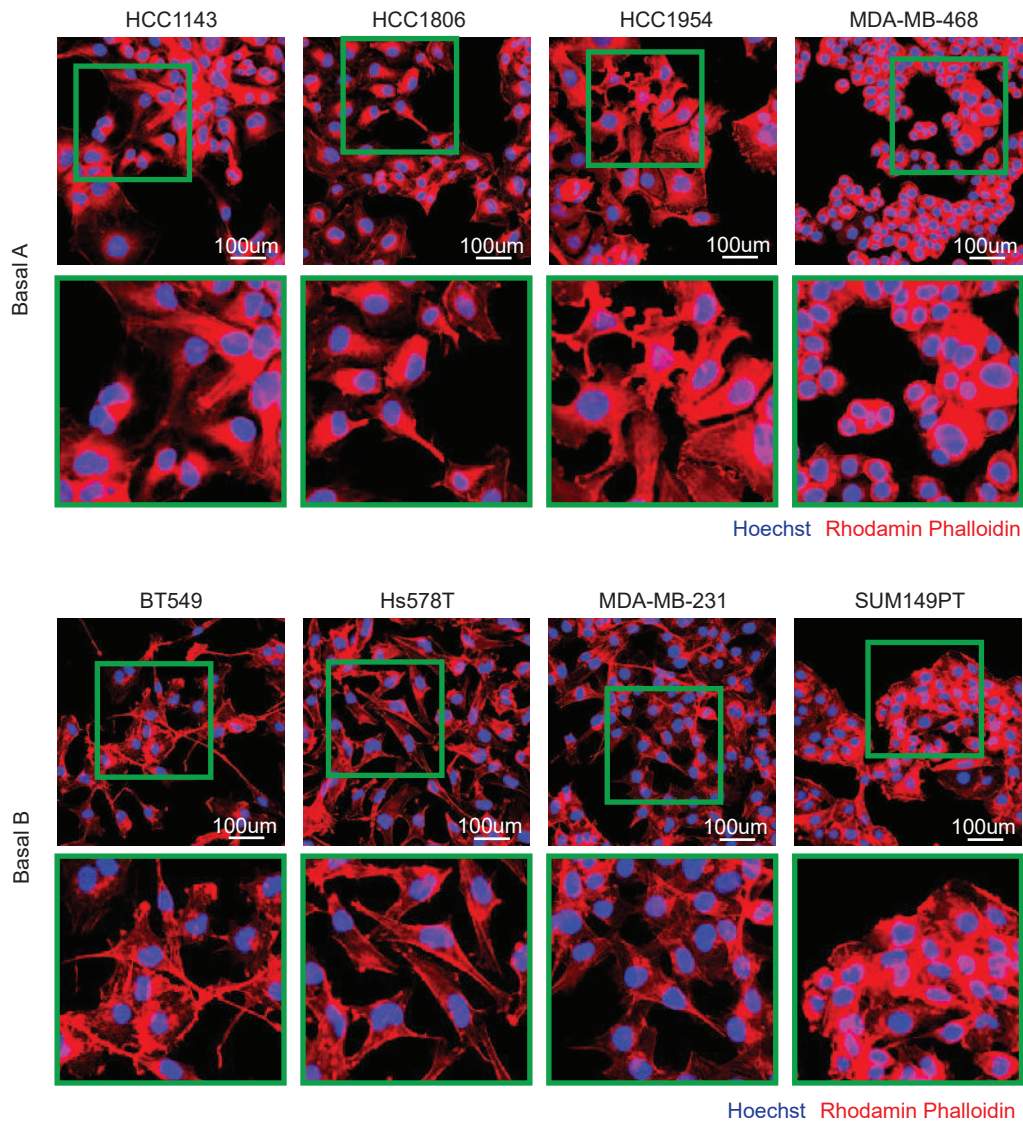
D



E

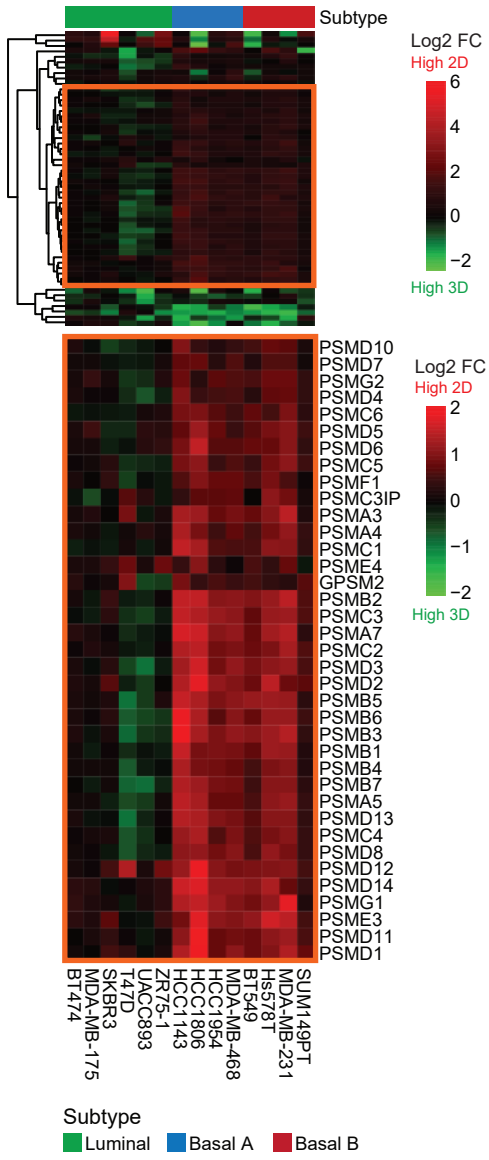


Supplementary Figure 3

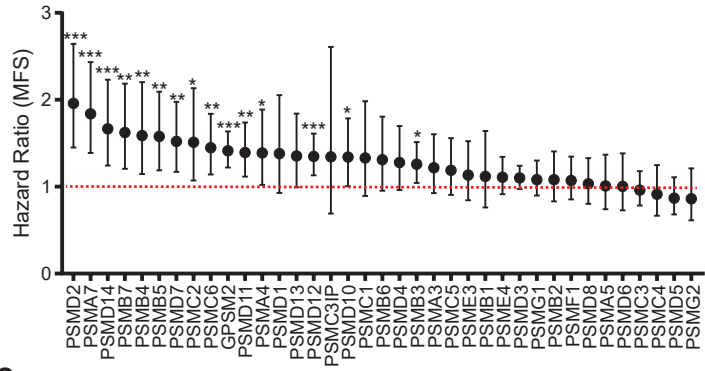


Supplementary Figure 4

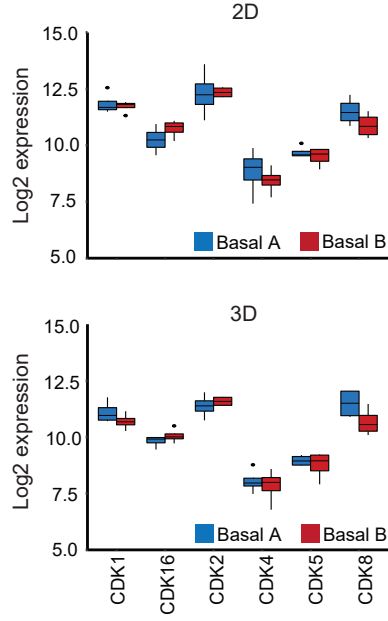
A



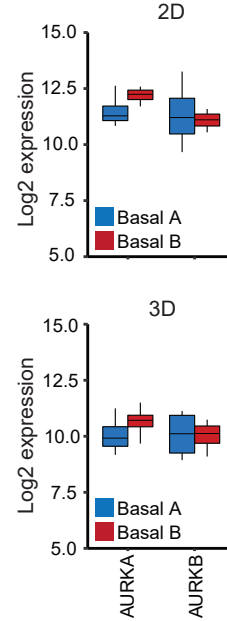
B



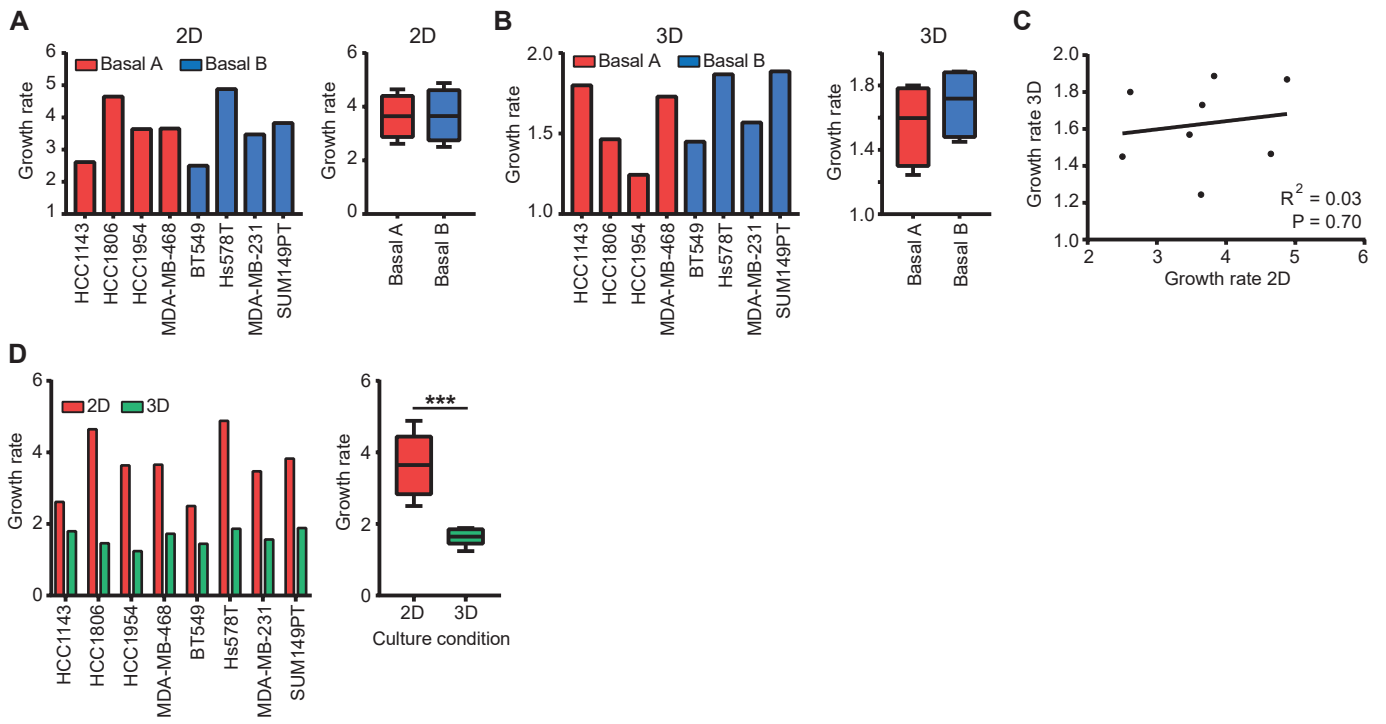
C



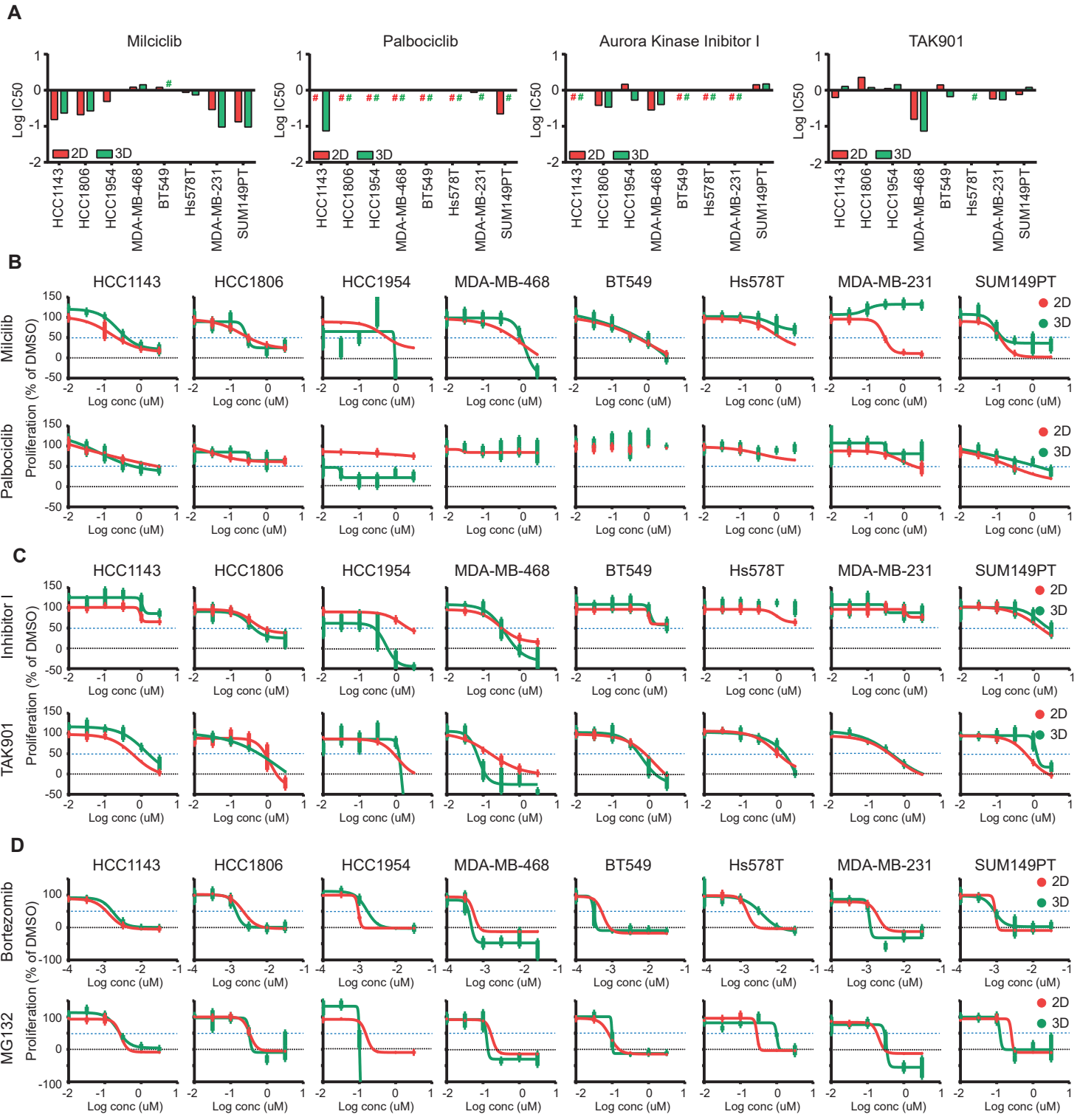
D



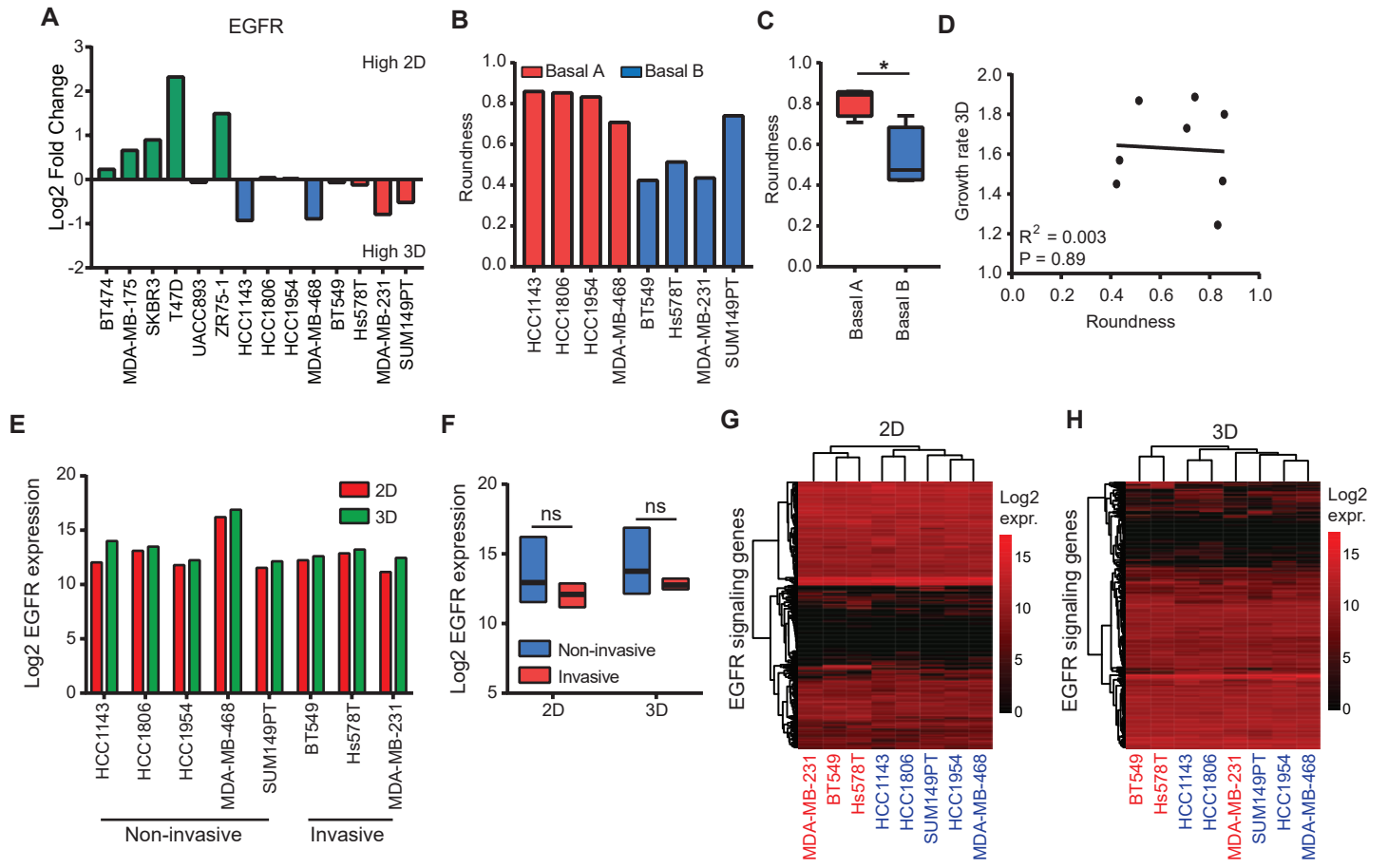
Supplementary Figure 5



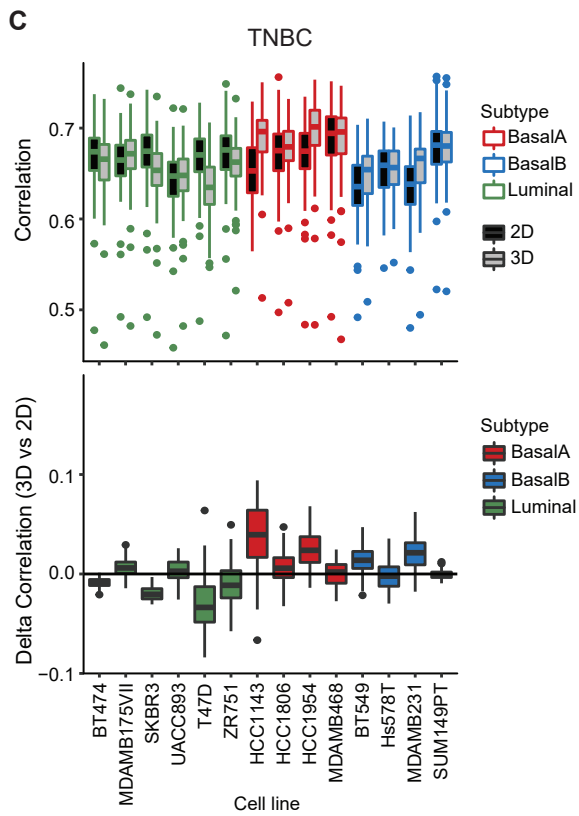
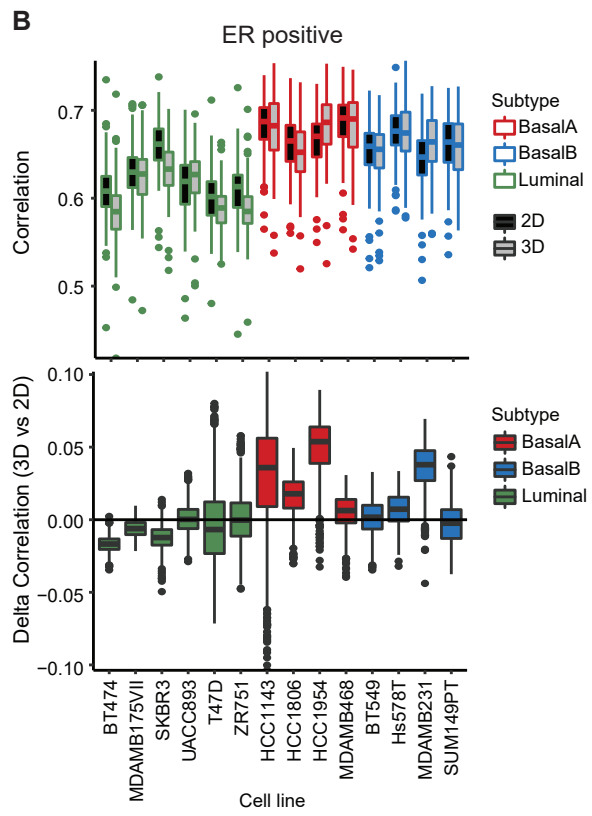
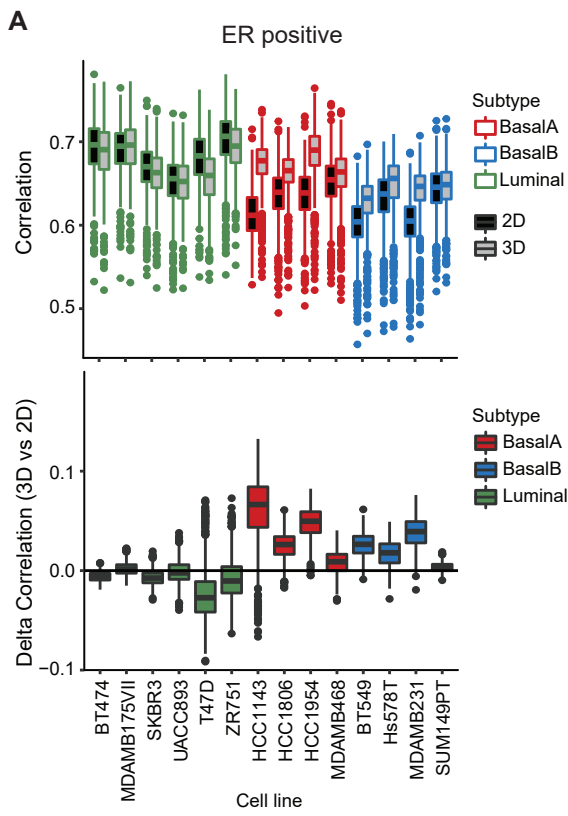
Supplementary Figure 6



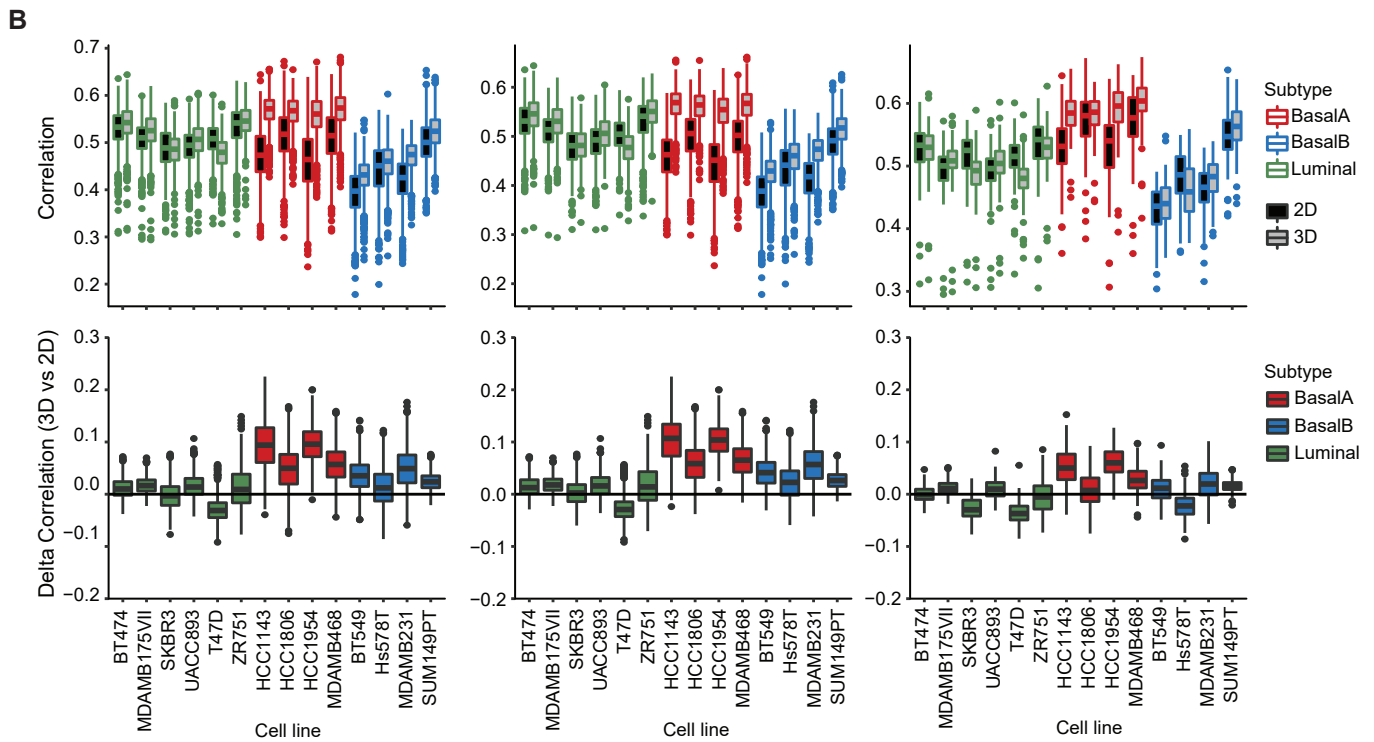
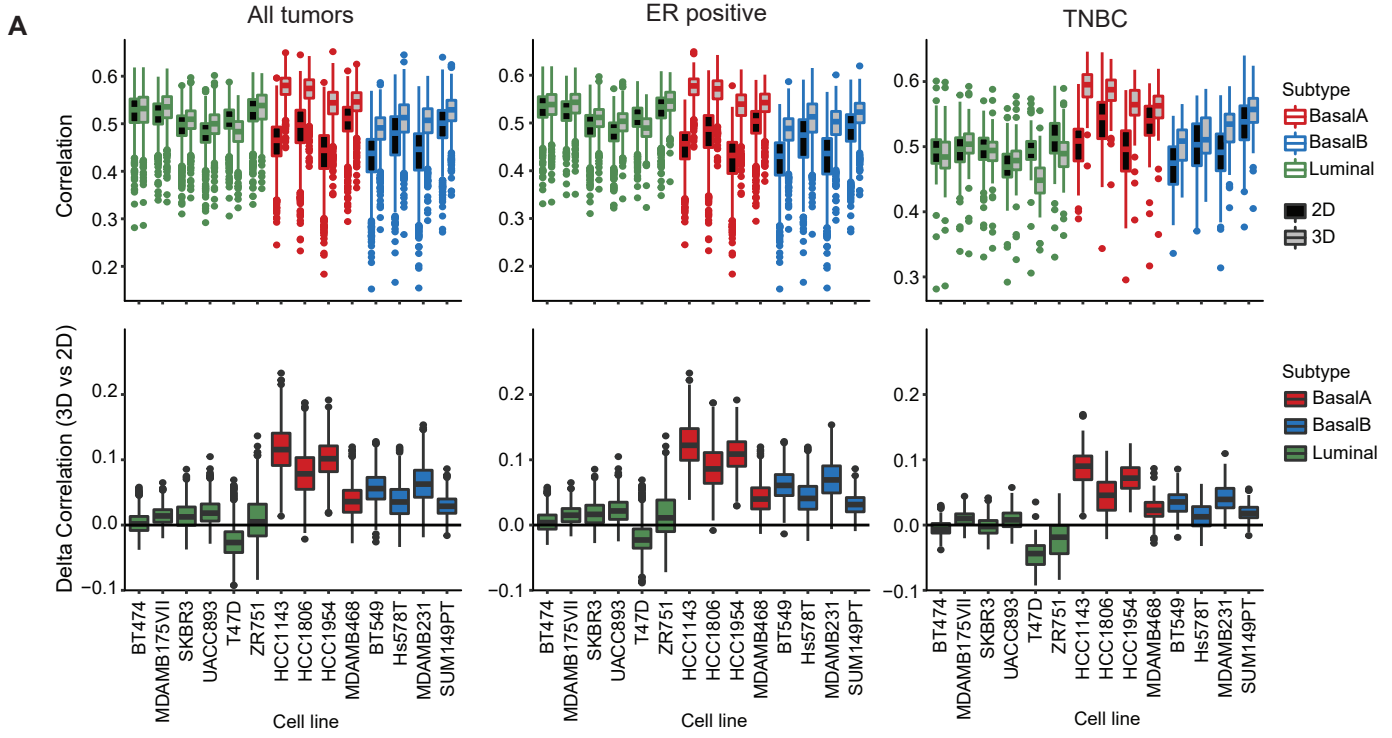
Supplementary Figure 7



Supplementary Figure 8



Supplementary Figure 9



Supplementary Figure 10

