
Supplemental Online Content

Liu Y-y, King J, Kline GA, et al. Outcomes of a specialized clinic on rates of investigation and treatment of primary aldosteronism. *JAMA Surg*. Published online March 31, 2021. doi:10.1001/jamasurg.2021.0254

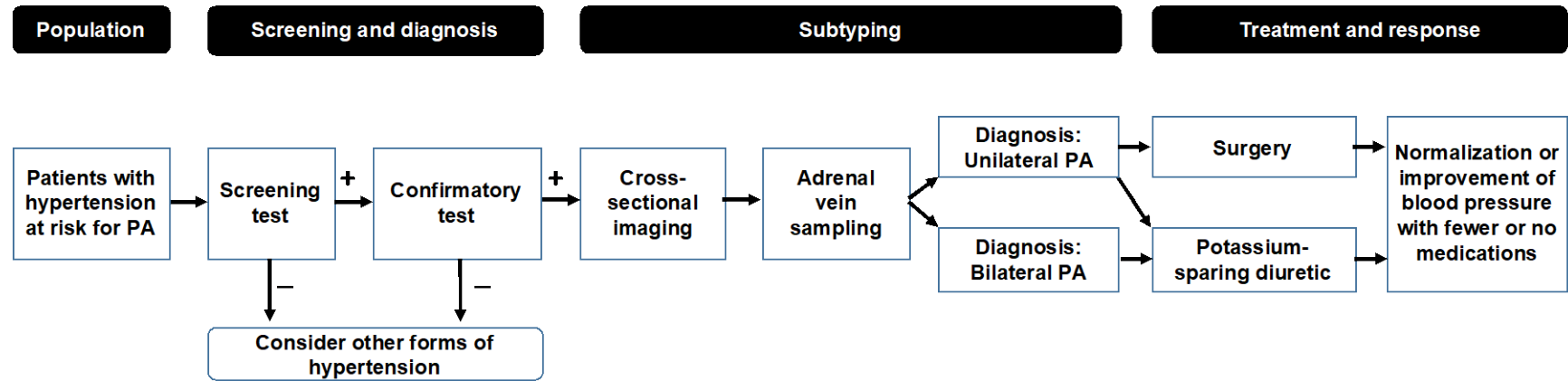
eFigure. The typical diagnostic and treatment pathway for primary aldosteronism

eTable 1. People with hypertension who were investigated and treated for primary aldosteronism in Alberta

eTable 2. Demographic and clinical factors affecting the detection rate stratified according to zone of residence

This supplemental material has been provided by the authors to give readers additional information about their work.

eFigure. The typical diagnostic and treatment pathway for primary aldosteronism



eTable 1. People with hypertension who were investigated and treated for primary aldosteronism in Alberta

Group	Number of people	Proportion, % (95% CI)
Prevalence of hypertension in Alberta ^a	1,070,783	29.2% (29.1, 29.2)
Screening among those with hypertension		
Received ARR	7,941	0.7% (0.7, 0.8)
Elevated ARR among those screened	1,703	21.4% (20.5, 22.4)
Subtyping among those who had positive ARR screen		
Received CT or MRI of the abdomen	975	57.2% (54.9, 59.6)
Received adrenal vein sampling	250	14.7% (13.0, 16.4)
Received any subtyping	1,005	59.0% (56.6, 61.4)
Targeted treatment among those who had positive ARR screen		
Received potassium-sparing diuretic	692	40.6% (38.3, 43.0)
Received adrenalectomy	120	7.0% (5.9, 8.4)
Received any targeted treatment	731	42.9% (40.6, 45.3)
Targeted treatment among those who had any subtyping		
Received potassium-sparing diuretic	500	49.7% (46.6, 52.9)
Received adrenalectomy	120	11.9% (10.0, 14.1)
Received any targeted treatment	539	53.6% (50.5, 56.7)

^a Denominator based on 3,671,886, the number of insured beneficiaries of Alberta healthcare aged 18 years and older in the fiscal year end of 2019. **Abbreviations:** ARR, aldosterone-to-renin ratio; CI, confidence interval; CT, computed tomography; MRI, magnetic resonance imaging.

Table 2. Demographic and clinical factors affecting the detection rate stratified according to zone of residence

Overall		Zone of Residence ^a					
		South	Calgary	Central	Edmonton	North	
Patients screened	No.	154	6,317	286	925	223	
	% (95% CI) ^b	1.9% (1.6, 2.3)	79.9% (79.0, 80.8)	3.6% (3.2, 4.1)	11.7% (11.0, 12.4)	2.8% (2.5, 3.2)	
Proportion of positive cases among patients screened in each zone	No.	28	1,468	40	133	27	
	% (95% CI)	18.2% (12.4, 25.2)	23.2% (22.2, 24.3)	14.0% (10.2, 18.6)	14.4% (12.2, 16.8)	12.1% (8.1, 17.1)	
Demographic Factors Associated with Positive Screening							
Age	<40	No. of positive cases / people tested	6/51	283/1,716	7/87	34/265	7/73
		% (95% CI)	11.8% (4.4, 23.9)	16.5% (14.8, 18.3)	8.0% (3.3, 15.9)	12.8% (9.1, 17.5)	9.6% (3.9, 18.8)
	40-59	No. of positive cases / people tested	16/59	651/2,555	16/107	63/350	12/92
		% (95% CI)	27.1% (16.5, 40.3)	25.5% (23.8, 27.2)	14.9% (8.8, 23.1)	18.0% (14.1, 22.4)	13.0% (6.9, 21.7)
	>59	No. of positive cases / people tested	6/44	534/2,046	17/92	36/310	8/58
		% (95% CI)	13.6% (5.2, 27.4)	26.1% (24.2, 28.1)	18.5% (11.1, 27.9)	11.6% (8.3, 15.7)	13.8% (6.2, 25.4%)
Sex	Female	No. of positive cases / people tested	12/70	828/3,327	25/167	73/485	16/101
		% (95% CI)	17.1% (9.2, 28.0)	24.9% (23.4, 26.4)	15.0% (9.9, 21.3)	15.1% (12.0, 18.6)	15.8% (9.3, 24.5)
	Male	No. of positive cases / people tested	16/84	640/2,990	15/119	60/440	11/122
		% (95% CI)	19.1% (11.3, 29.1)	21.4% (19.9, 22.9)	12.6% (7.2, 18.0)	13.6% (10.6, 16.6)	9.0% (4.6, 13.4)

			22.9)	19.9)	17.2)	15.6)	
Clinical Factors Associated with Positive Screening							
Hypokalemia	Present	No. of positive cases / people tested	14/75	660/2,170	21/90	74/371	16/74
		% (95% CI)	18.7% (10.6, 29.3)	30.4% (28.5, 32.4)	18.9% (12.1, 27.5)	20.0% (16.0, 24.4)	21.6% (12.9, 32.7)
	Absent	No. of positive cases / people tested	14/79	808/4,147	19/175	59/554	11/149
		% (95% CI)	17.7% (10.0, 27.9)	19.5% (18.3, 20.7)	10.9% (6.7, 16.4)	10.7% (8.2, 13.5)	7.4% (3.7, 12.8)
No. of anti-hypertensive drugs	<3	No. of positive cases / people tested	15/107	977/4,749	26/221	90/686	17/163
		% (95% CI)	14.0% (8.1, 22.1)	20.6% (19.4, 21.8)	11.8% (7.8, 16.8)	13.1% (10.7, 15.9)	10.4% (6.2, 16.2)
	≥3	No. of positive cases / people tested	13/47	491/1,568	14/65	43/239	10/60
		% (95% CI)	27.7% (15.6, 42.6)	31.3% (29.0, 33.7)	21.5% (12.3, 33.5)	18.0% (13.3, 23.5)	16.7% (8.3, 28.5)
Specialty ordering screening test	Family	No. of positive cases / people tested	6/36	399/1,860	9/82	20/176	9/82
		% (95% CI)	16.7% (6.4, 32.8)	21.5% (19.6, 23.4)	11.0% (5.1, 19.8)	11.4% (7.1, 17.0)	11.0% (5.1, 19.8)
	Card/Neph/GIM	No. of positive cases / people tested	10/65	632/2,558	14/108	81/542	11/92
		% (95% CI)	15.4% (7.6, 26.5)	24.7% (23.1, 26.4)	13.0% (7.3, 20.8)	14.9% (12.1, 18.2)	12.0% (6.1, 20.4)
	Endo	No. of	4/14	221/941	13/63	24/117	4/24

		positive cases / people tested					
		% (95% CI)	28.6% (8.4, 58.1)	23.5% (20.8, 26.3)	20.6% (11.5, 32.7)	20.5% (13.6, 29.0)	16.7% (4.7, 37.4)
	Other	No. of positive cases / people tested	8/39	216/958	4/33	8/90	3/25
		% (95% CI)	20.5% (9.3, 36.5)	22.6% (19.9, 25.3)	12.1% (3.4, 28.2)	8.9% (3.9, 16.8)	12.0% (2.6, 31.2)

^a 36 patients who were screened had no zone listed and 7 patients with positive screening had no zone listed.

^b Percentage of people screened in each zone among all people screened in the province.

Abbreviations: ARR, aldosterone-to-renin ratio; Card, cardiology; CI, confidence interval; Endo, endocrinology; GIM, general internal medicine; Neph, nephrology.