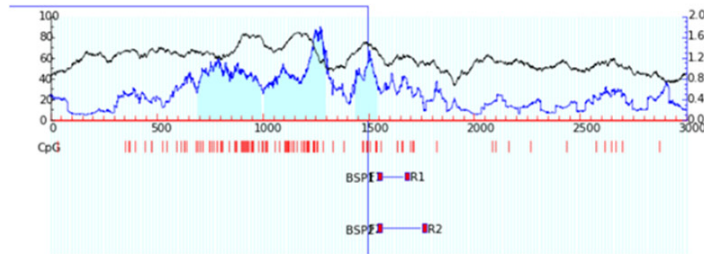


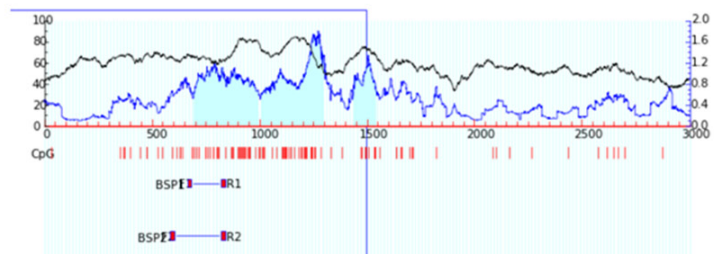
Triptolide upregulate TET2 expression

NEPH1 pari1



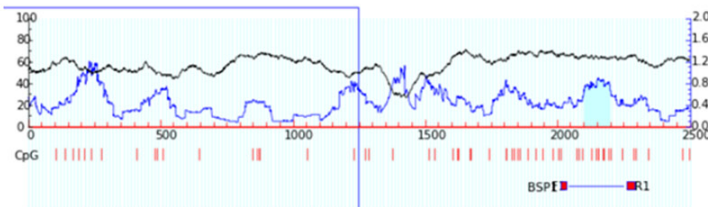
CCTCGCTGGAAGTGGAAAGGAGAGCAAAGAGGAAAGGAATTGAGGGCAAAGCAAAGGGGT  
 GAAAAATGTGACCGTCGTGGGTCTGGGGCAGGCA CGACGGGACCCCTGGCCACCCACCCCTCTATT  
 TATAGACGCAATCTGGTCGGCGGCTATGGAAGTAAAGCAGTGGAGGAGAA CATGGGCTGAGGGACATC  
 AGCCTC

NEPH1 pair 2



GGAGGTGGGAACCACCTTTCGCTCACCCCTCGCCGAAATCCGAAATCCACCCCTCTCCAGCC  
 TTGCCCTTAGGCTGACTCAGGCCTCCGAAACCCCGCCTCAGAGGCGAGGGTCGGTAGGGTCC  
 AGAAGCTCAAGAGAAAGCGTTCGGTTCCCGTTTTACTCGACCTCCAGCCCTCGCGCCCAATGCT  
 CCGTTCCTCCCGGAGCCAGAGGAAACAACCTGGGC

Nephrin pair1



GGACCCTGCTAGAGGTAAGGGATCAGAGCCTGAGACCCTCAGCCACCAGCGAAGCTCGGCCCTGACT  
 TCCGGCTCCCTGCAGGTGAATCCACCTGCACATCGAGGCCTGTGACCTCAGCGATGACGCGGAGTAT  
 GAGTGCCAGGTGGCCGCTCTGAGATGGGGCCGAGCTCGTGTCTCCAGAGTGATCCTCTCCATCCTGG  
 GTATGGGTGAGAGACGCCAGGACCATGAGTCTGGGCTCAAGCC

Figure S1. The promoters information of NEPH1 and nephrin. The CpG islands were predicted using the online software MethPrimer. The amplified sequences used in the BSAS analyses were shown and the primers were highlighted.