

Supplemental Online Content

Drouin O, Sato R, Drehmer JE, et al. Cost-effectiveness of a smoking cessation intervention for parents in pediatric primary care. *JAMA Netw Open*. 2021;4(4):e213927. doi:10.1001/jamanetworkopen.2021.3927

eTable 1. Wage

eTable 2. Detailed List of Cost Items

eTable 3. Types of Distribution and Variability Assessment Method for Each Cost Item

eFigure. Scatter Plots of Incremental Effectiveness (%) and Incremental Cost per Smoker Illustrating How the Cost (Numerator) and Effectiveness (Denominator) Values Vary With One Another 10,000 Probabilistic Sensitivity Analysis Simulations

This supplemental material has been provided by the authors to give readers additional information about their work.

eTable 1: Wage

Occupation title	Corresponding occupation title in Bureau of Labor Statistics	Hourly wage + fringe
Senior Pediatrician	Pediatricians, General; 75th+ percentile	\$133.00
Pediatrician	Pediatricians, General	\$109.06
Project Manager		\$66.50
Research Assistant		\$15.96
Registered Nurse	Registered Nurses	\$45.86
Nurse Practitioner	Nurse Practitioners	\$68.44
Practice Manager	Office manager (AAP) ¹	\$33.68
"Practice Staff"	Receptionists and Information Clerks - Office of physicians	\$18.63
Medical Assistant	Medical Assistants	\$21.49

¹: Wage for this occupation comes from suggested guidelines from the American Academy of Pediatrics

eTable 2: Detailed List of Cost Items

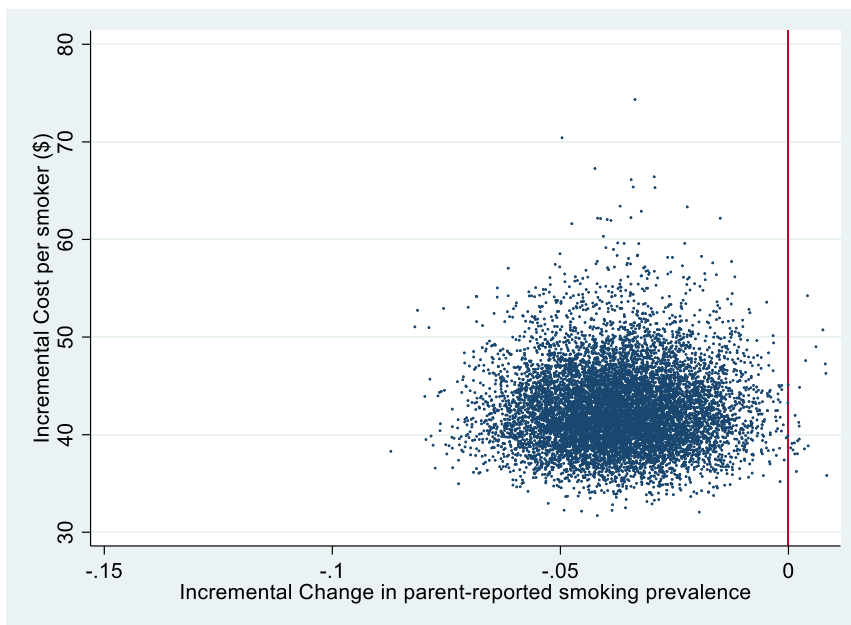
Cost	Random component	Fixed component
Fixed costs		
<i>Pre-implementation</i>		
Peer-to-peer training	wage, total costs (site-specific)	# workers, # minutes
Training video viewing time	wage, % of video watched	# minutes of video time, # workers
Whole office training call	wage, total costs (site-specific)	# minutes of call time, # workers
Tablet computers		# tablets, # 4G network extender
UMass TTS Training	wage, total costs (site-specific)	Registration cost, # workers, # hours of training time
<i>Post-implementation</i>		
Check-in call (1 st month)	wage, # minutes call	# calls, # workers
Pharmacy calls	wage, # minutes call, # pharmacies	
Pharmacy letters	wage, # pharmacies	price of postage, price of envelope/printing
Variable costs		
Monthly report preparation	wage, # minutes call	# calls, # workers
Tablet computers data plan		# tablets
Check-in calls	wage, # minutes call	# calls per month, # workers
In office tablet management (with parents)	wage, # minute per smoker, # minutes per non-smoker, % smokers	# days, # workers
In-office tablet management (end of each day)	wage, # minutes per day	# days, # workers
Parent letters	wage, # minutes from RA	price of postage, price of envelope/printing, # letters
Parent calls (one practice only)	wage, # hours call per week	# weeks
Quitline report management time	wage, # minutes	# report per year, # years, # workers
One-year whole office call	wage, total costs (site-specific)	# workers
Programmatic support	wage, # minutes	# months, # workers
Notes: Variation in wages is determined by a wage multiplier. The wage multiplier was made under the assumption that wages for all job types vary together (for example, due to local economic conditions).		

eTable 3: Types of Distribution and Variability Assessment Method for Each Cost Item

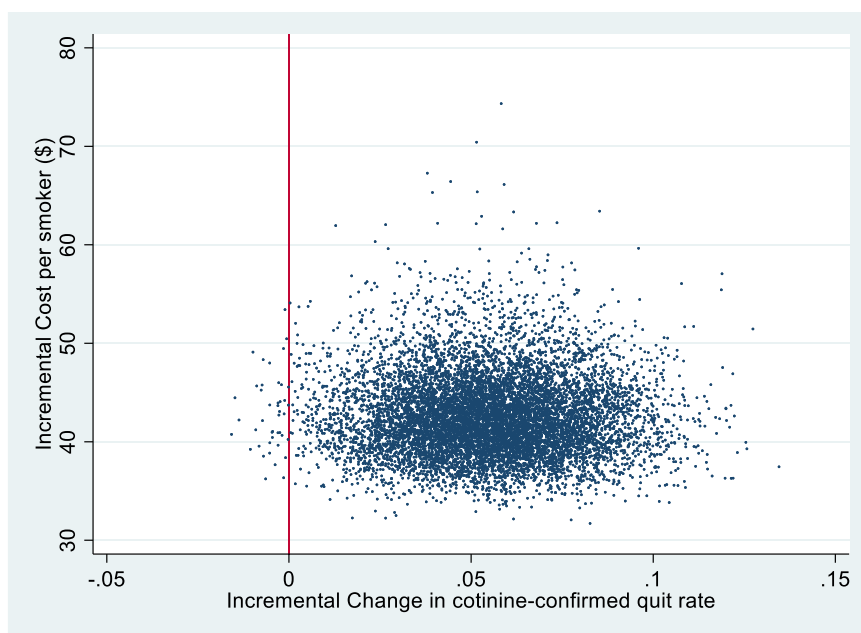
Category	Item	Type of distribution used	Standard deviation observed vs. assumed
General	wage	normal	assumed
Fixed costs			
Pre-implementation			
Peer-to-peer training	total costs (site-specific)	normal	observed
Training video viewing time	% of video watched	uniform	assumed
Whole office training call	total costs (site-specific)	normal	observed
UMass TTS Training	total costs (site-specific)	normal	observed
Post-implementation			
Check-in call (1st month)	# minutes call	normal	assumed
Pharmacy calls	# minutes call	normal	assumed
Pharmacy calls / Pharmacy letters	# pharmacies	normal	assumed
Variable costs			
Monthly report preparation	# minutes call	normal	assumed
Check-in calls	# minutes call	normal	assumed
In office tablet management (with parents)	# minute per smoker	log normal	observed
	# minutes per non-smoker	log normal	observed
	% smokers	normal	assumed
In-office tablet management (end of each day)	# minutes	normal	assumed
Parent letters	# minutes from RA	normal	assumed
Parent calls (one practice only)	# hours call	normal	assumed
Quitline report management time	# minutes	normal	assumed
One-year whole office call	total costs (site-specific)	normal	observed
Programmatic support	# minutes	normal	observed

eFigure: Scatter Plots of Incremental Effectiveness (%) and Incremental Cost per Smoker Illustrating How the Cost (Numerator) and Effectiveness (Denominator) Values Vary With One Another 10,000 Probabilistic Sensitivity Analysis Simulations

Panel A: Change in parent-reported smoking prevalence



Panel B: Cotinine-confirmed smoking cessation



These graphs represent the joint 95% confidence intervals on both incremental effectiveness and incremental cost per smoker.