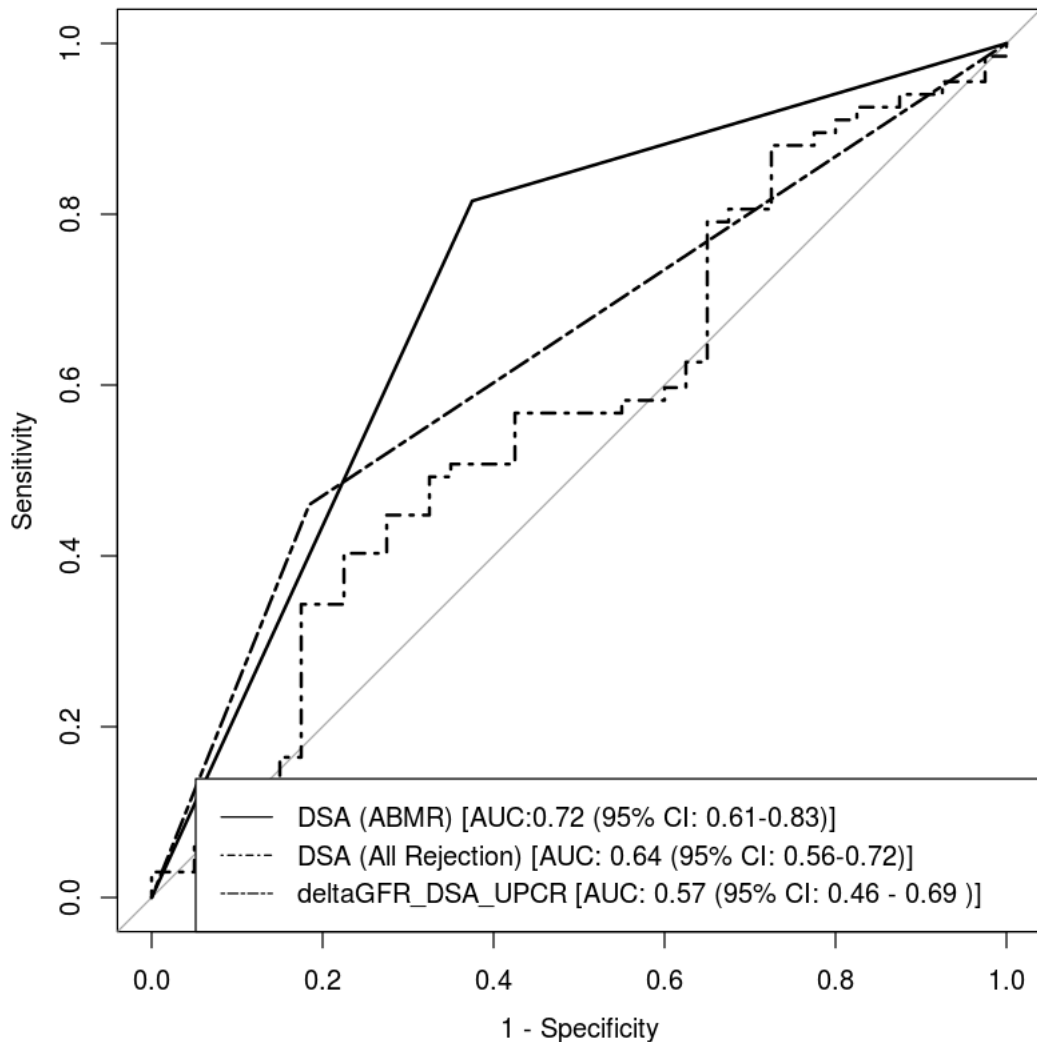


Supplemental Table of Content

1- Supplemental Figure 1. Receiver-Operating-Characteristic (ROC) curve for any cause rejection and ABMR



Supplemental Figure 1. Receiver-Operating-Characteristic (ROC) curve for any cause rejection and ABMR. The ROC analysis and area under the curve (AUC) is shown for the DSA in ABMR and in any-cause rejection and compared to delta eGFR_DSA_UPCR. The fraction of true positive results (sensitivity) and the fraction of false positive results (1 – specificity) for diagnosis of any-cause rejection are displayed on the y-and x-axis, respectively. The AUC for the DSA in ABMR is 0.72 (95% CI 0.61-0.83), the AUC for DSA in any cause rejection is 0.64 (95%CI 0.56-0.72), and the AUC for delta eGFR combined with DSA and UPCr is 0.57 (95%CI 0.46-0.69).