

Supplemental Figures for:

"FOLFOXIRI-bevacizumab or FOLFOX-panitumumab in left-sided RAS/BRAF wild-type metastatic colorectal cancer patients: a propensity score-based analysis" Chiara Cremolini et al.

SUPPLEMENTAL FIGURE LEGENDS

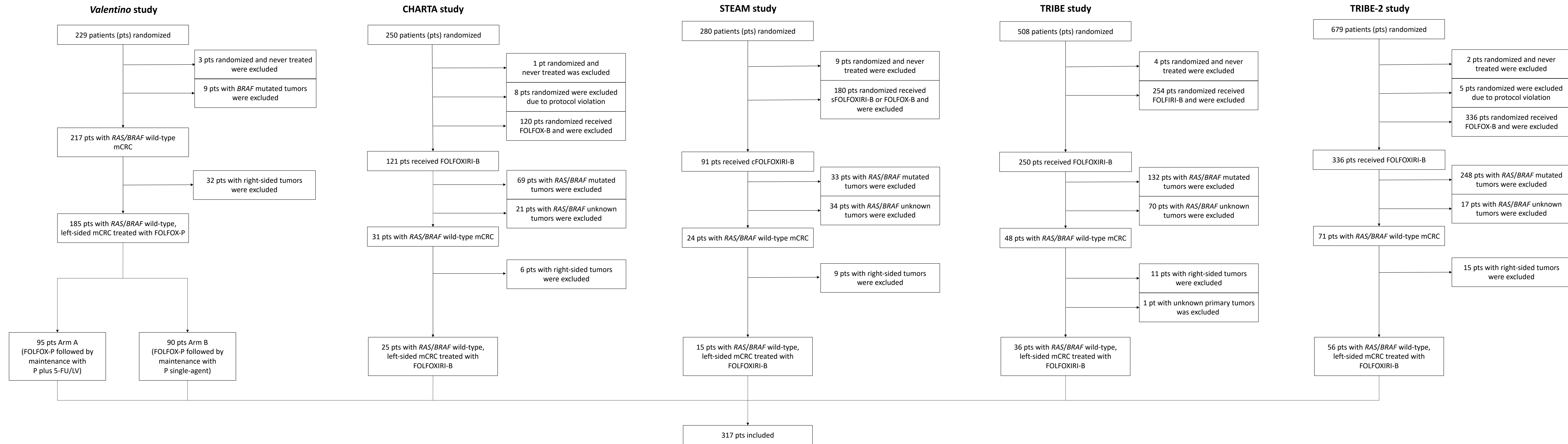
Supplemental Figure S1. Flow chart showing the process of patients' selection.

Supplemental Figure S2. Bar graph showing the distribution of propensity scores in the treatment groups before (Panel A) and after (Panel B) the matching process.

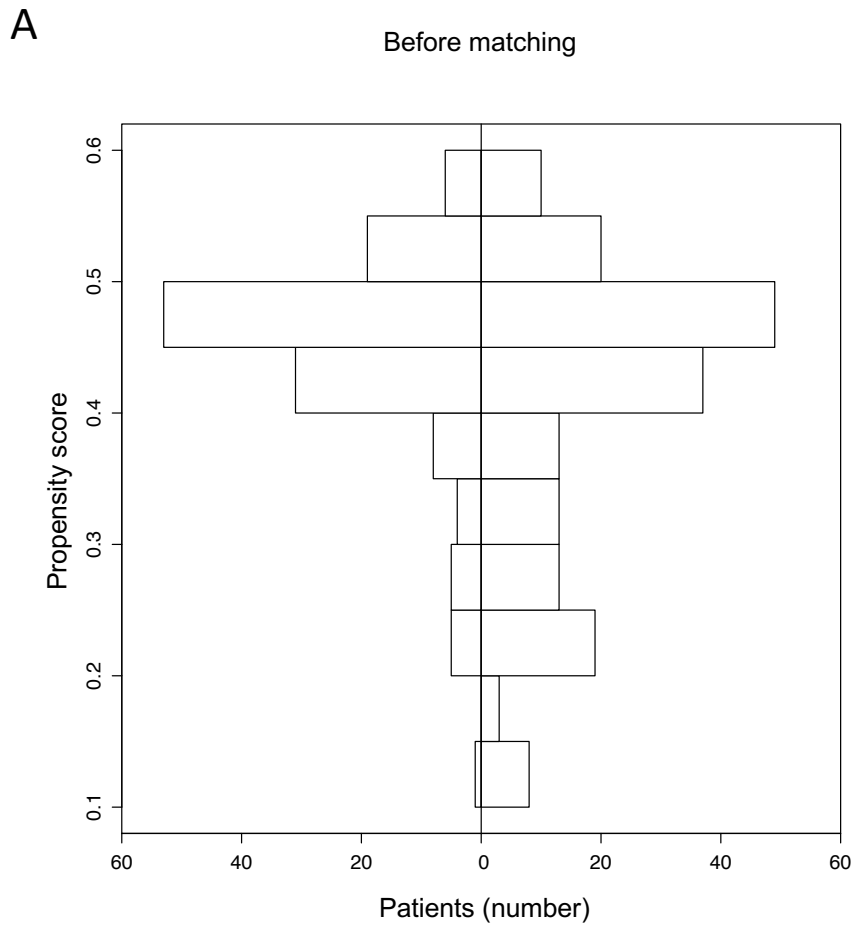
Supplemental Figure S3. Kaplan-Meier curves for PFS (panel A) and OS (panel B) according to treatment in the propensity score matched sensitivity analysis. Blue lines indicate patients treated with FOLFOX-panitumumab whereas violet lines indicate patients treated with FOLFOXIRI-bevacizumab.

Supplemental Figure S4. Kaplan-Meier curves for PFS (panel A) and OS (panel B) from time of secondary resection according to treatment in the subgroup of patients who underwent secondary resection with curative intent. Blue lines indicate patients treated with FOLFOX-panitumumab whereas violet lines indicate patients treated with FOLFOXIRI-bevacizumab.

Supplemental Figure S1

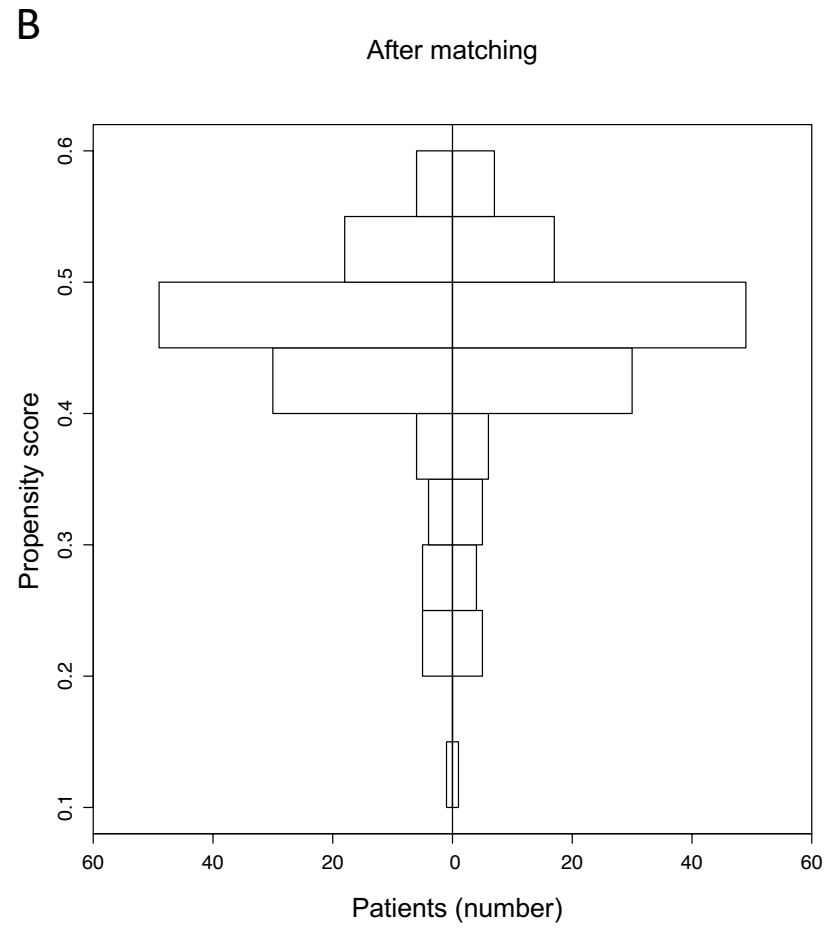


Supplemental Figure S2



FOLFOXIRI-bevacizumab
N = 132

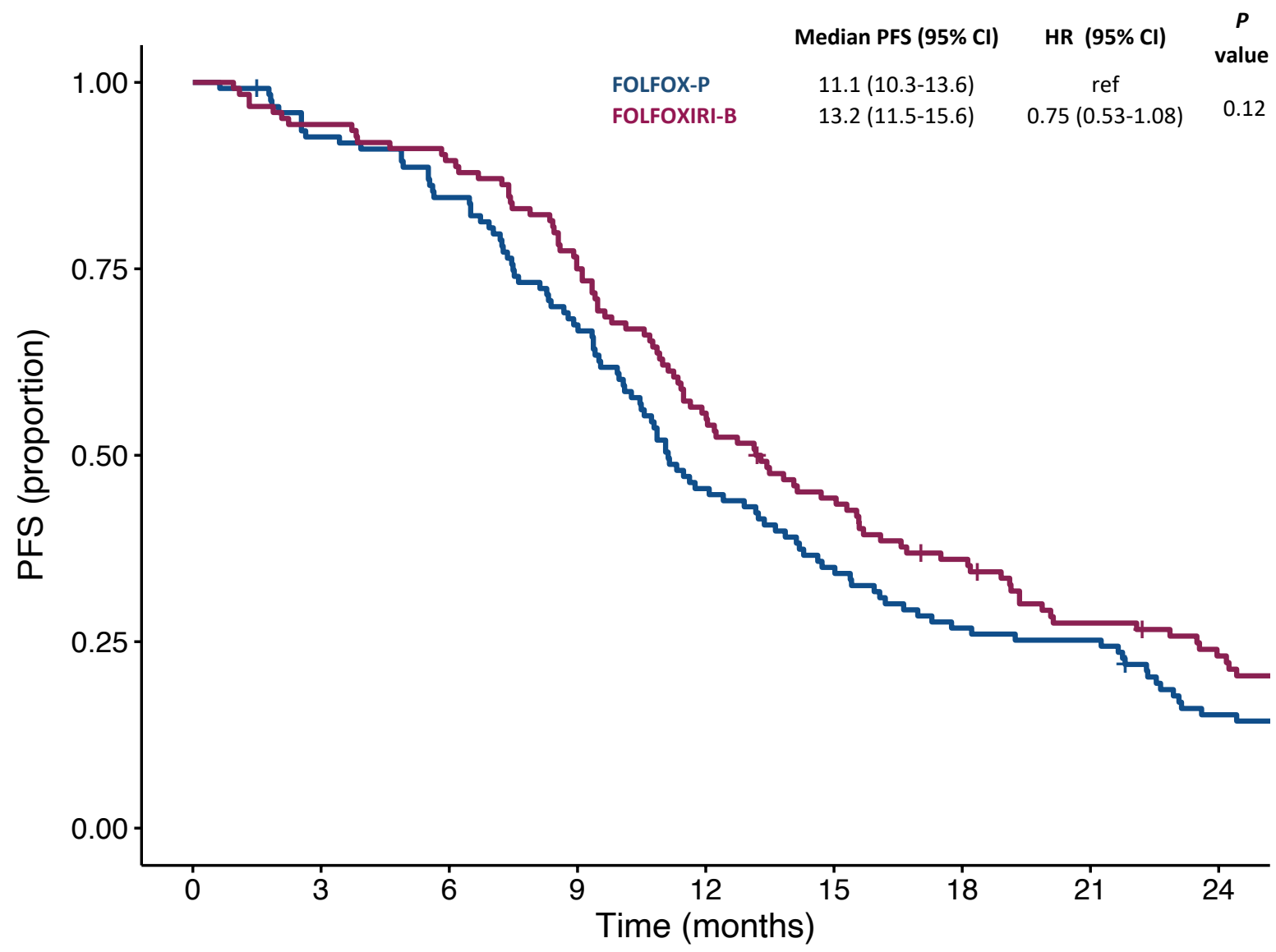
FOLFOX-panitumumab
N = 185



FOLFOXIRI-bevacizumab
N = 124

FOLFOX-panitumumab
N = 124

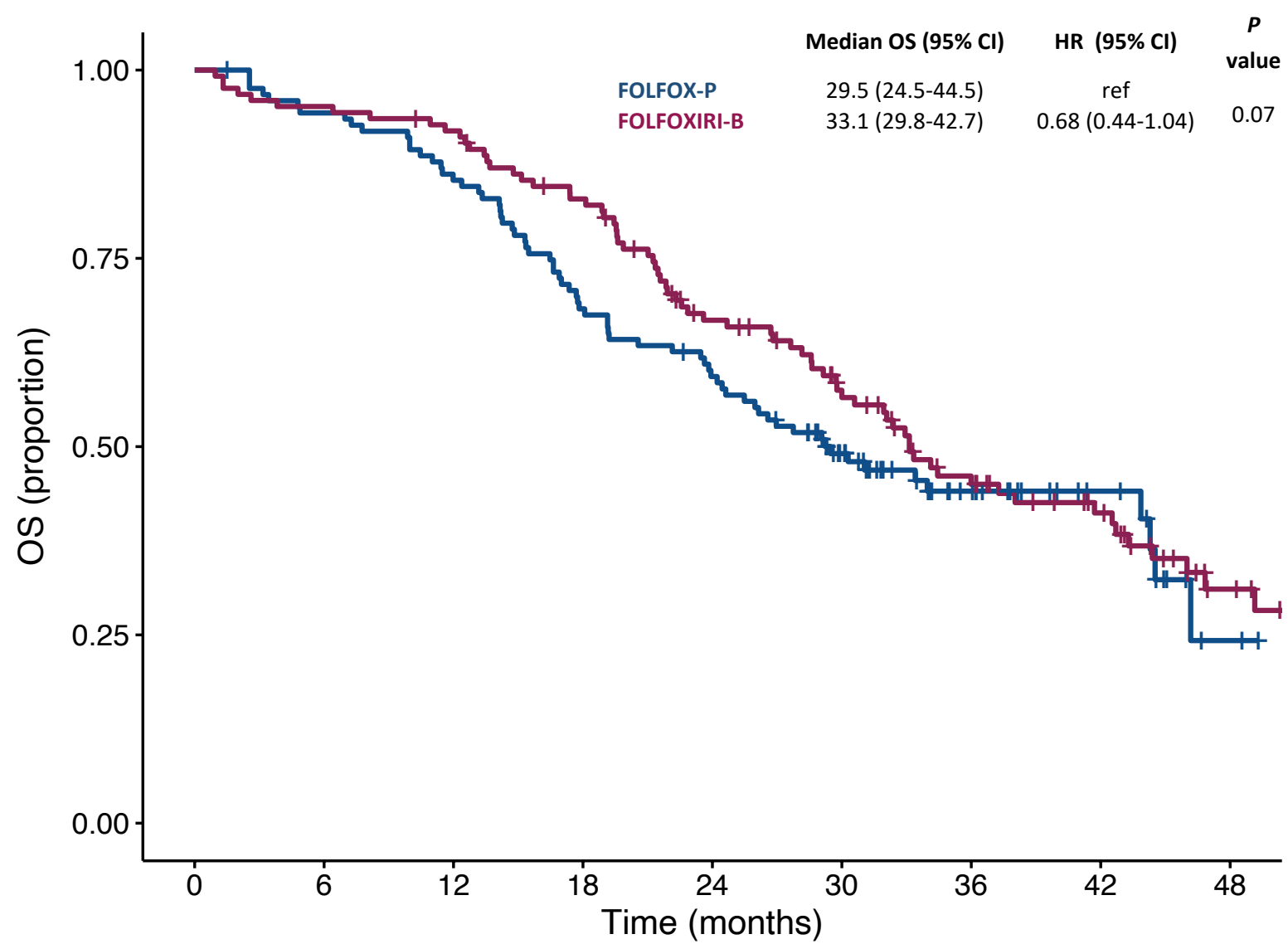
A



Number at risk

124	114	104	83	56	43	33	31	18
124	117	111	93	69	54	43	32	26
0	3	6	9	12	15	18	21	24
Time (months)								

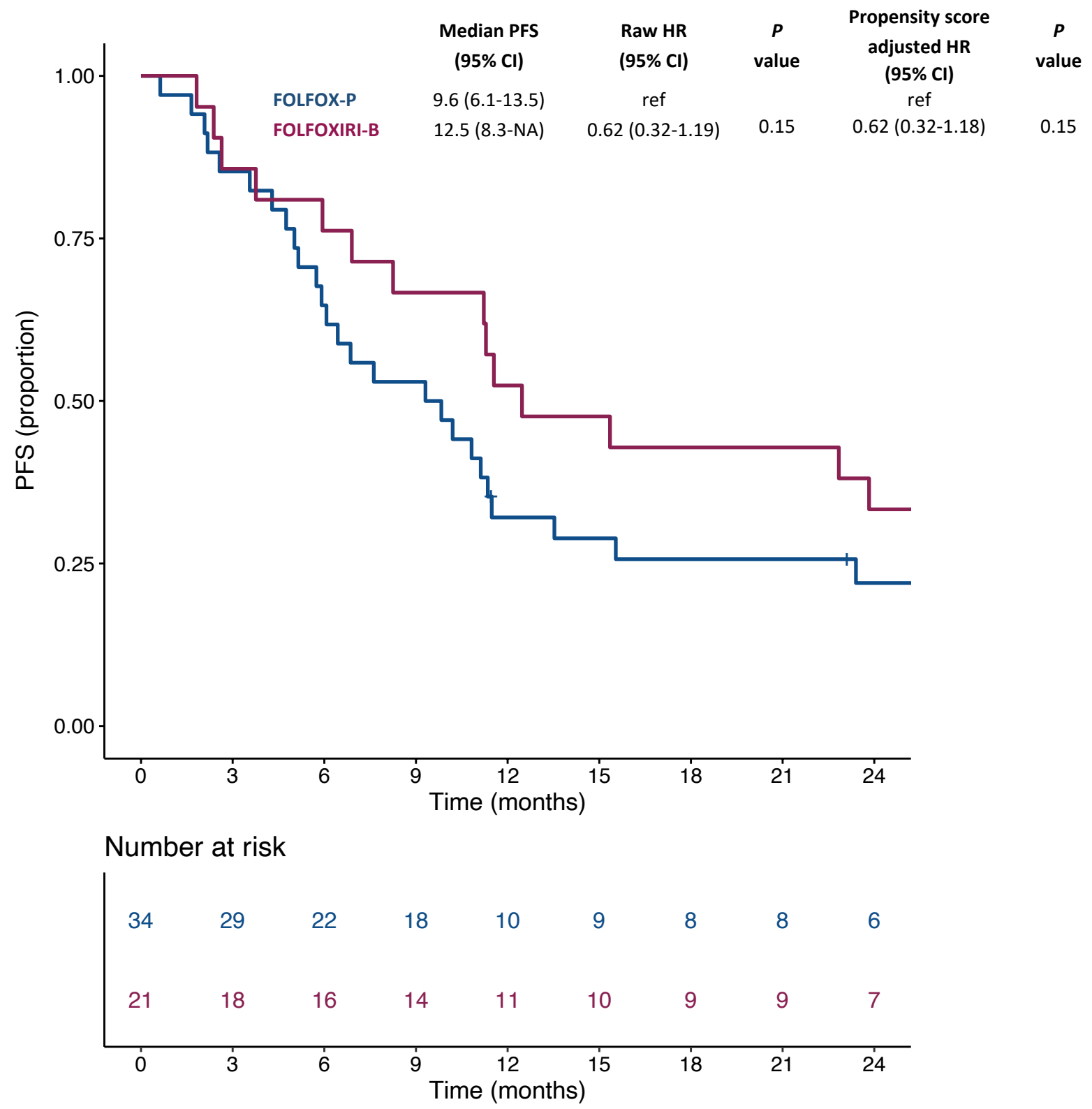
B



Number at risk

124	116	105	84	72	48	25	13	2
124	118	113	100	75	59	41	30	13
0	6	12	18	24	30	36	42	48
Time (months)								

A



B

