

Figure S1. Faint expression of c-met in normal kidney tissues.

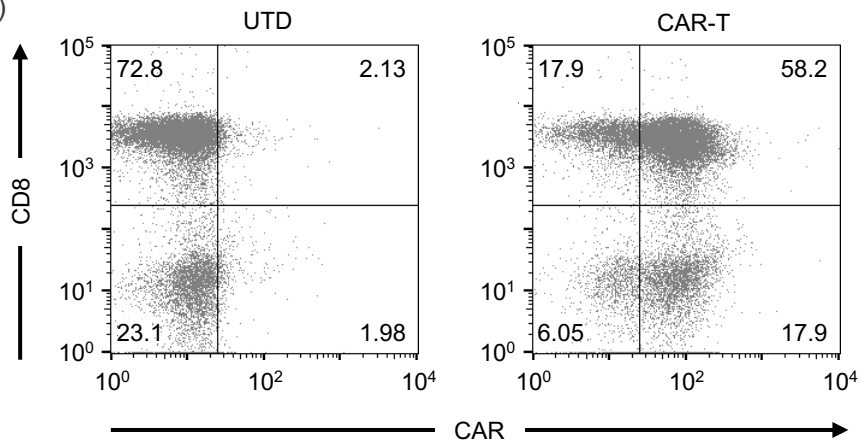
Images of IHC for c-met in the normal tissue areas of clinical samples of PRCC are displayed. (A) The area of renal tubules and of (B) glomeruli are exhibited. Representative images are shown.

Figure S1

(A)



(B)



(C)

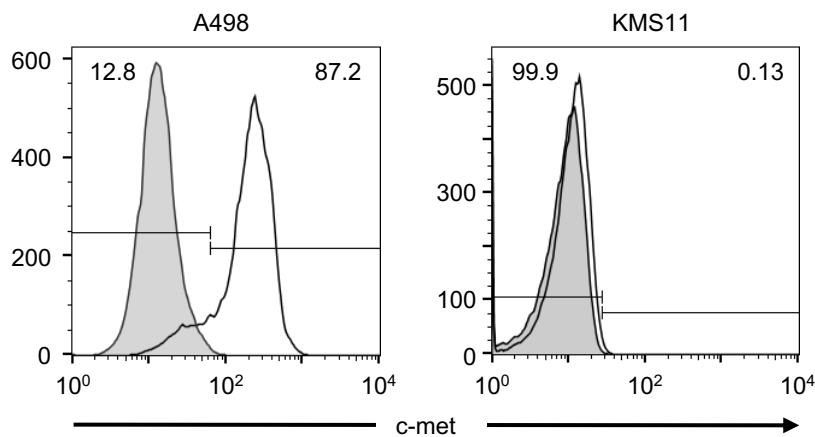


Figure S2. Generation of anti-human c-met CAR-T cells.

(A) Schematic representation of CAR against human c-met. (B) Human peripheral blood T cells transduced with the CAR were stained with recombinant human c-met fusion protein, along with anti-CD8 Ab. UTD-T cells were examined as a control. The percentage of cells in each quadrant is indicated. (C) The expression levels of c-met on A498 or KMS11 were analyzed by flow cytometry. No stained controls are depicted in gray. The percentages of positive or negative populations are indicated.

Figure S2