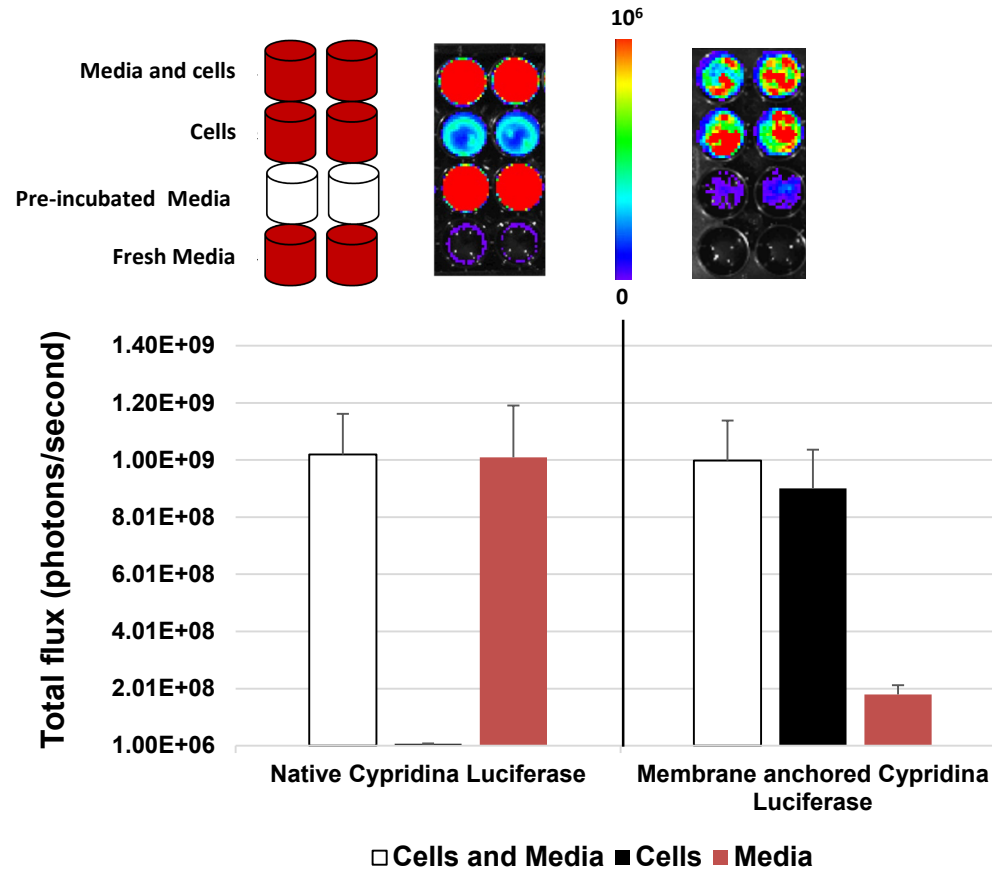


OMTO, Volume 21

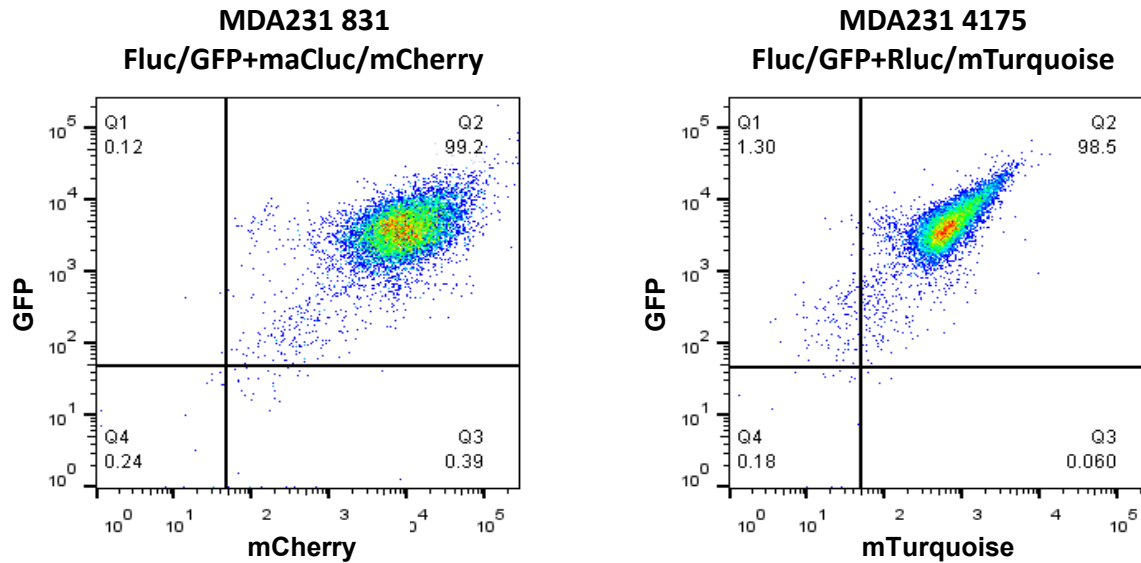
## Supplemental information

**Introducing a new reporter gene,  
membrane-anchored *Cypridina* luciferase,  
for multiplex bioluminescence imaging**

**Maxim A. Moroz, Juan Zurita, Anna Moroz, Ekaterina Nikolov, Yury Likar, Konstantin Dobrenkov, Jason Lee, Larissa Shenker, Ronald Blasberg, Inna Serganova, and Vladimir Ponomarev**



**Supplemental figure 1.** The effect of cell-surface anchoring of native Cypridina Luciferase on bioluminescence intensity. Bioluminescence signal output was measured on an IVIS-Spectrum analyzer. Cells + media (open bars); cells only (black bars) and post-incubation media only (red bars).



**Supplemental figure 2.** Post-sorting Flow Cytometry (FACS) profiles for MDA231/831 Fluc/GFP+maCluc/mCherry and MDA231/4175 Fluc/GFP+Rluc/mTurquoise cell lines demonstrating pure, double positive populations (A). Signal to noise (animals injected with substrate) ratios for in vivo BLI imaging of xenografts transduced with different luciferases. n=9 (B)