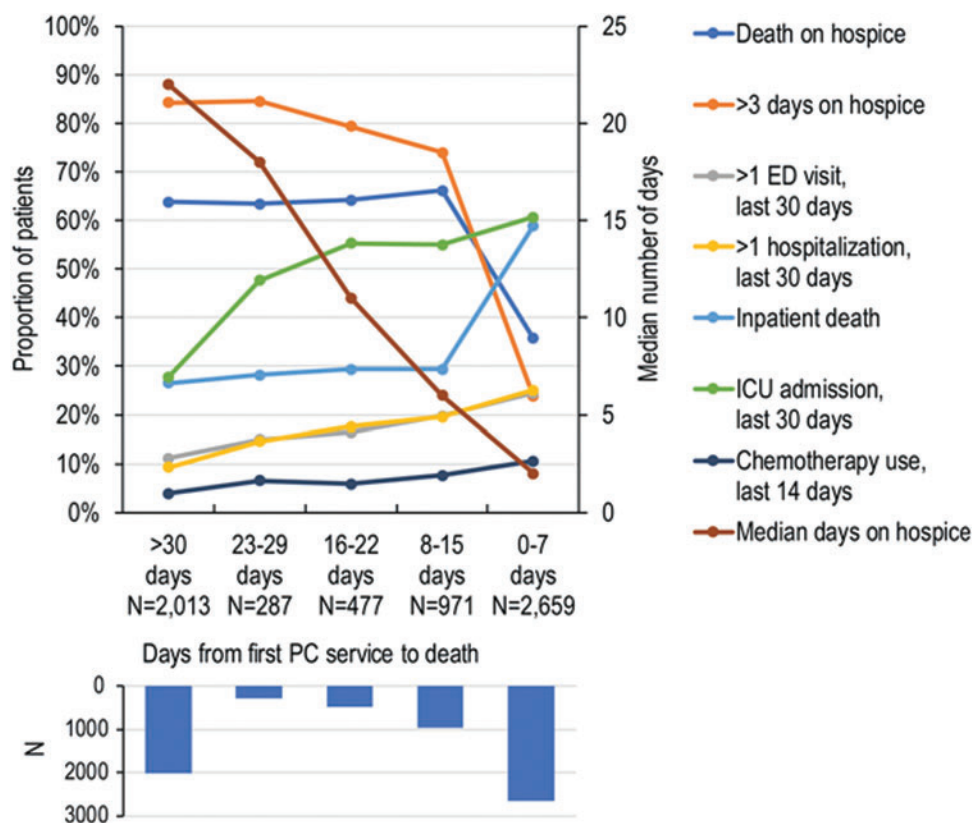


Supplementary Data



SUPPLEMENTARY FIG. S1. Indicators of EOL care aggressiveness among patients receiving PC services, according to specific timing of the first Medicare claim for PC services relative to death. While some indicators had either similar or monotonously changing prevalence according to the timing, the group receiving “early” PC services had a markedly lower proportion of patients admitted to the ICU. EOL, end-of-life; PC, palliative care; ICU, intensive care unit.