

Fig S1. Correlation of ER β and PTEN in prostate cancer. In ER β nuclear-positive cancer (A), PTEN was expressed in cell nuclei (B). In cancer when ER β was cytosolic (C), PTEN was expressed in cytoplasm (D). In cancer when ER β was lost (E), PTEN expression was also lost (F). ER β and PTEN double fluorescent staining showed that there was co-localization of ER β (red), PTEN (green) and DAPI (blue) (white arrow) (G-J). A close-up view of a co-localization has been inserted in I and J. (Scale bars in A-F, 50 μ m; G-J: 200 μ m)

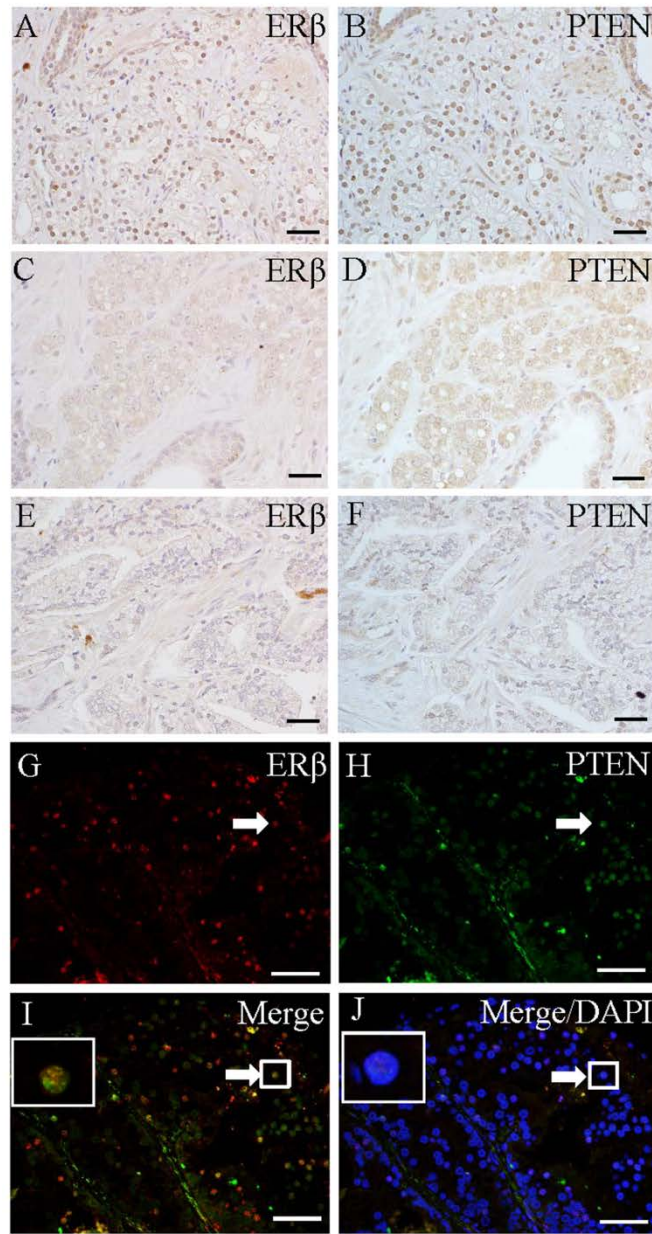


Fig S2. EGFR nuclear translocation promoted PCNA expression in ADT- treated cancer. In relatively normal ducts in the biopsy of Gleason Grade 4 cancer, few cells in EGFR-nuclear-negative ducts expressed PCNA (A, B). Many more cells expressed PCNA in EGFR-nuclear-positive ducts (C, D). In EGFR-nuclear-positive ducts, PCNA expression was significantly increased (* $P < 0.05$) (E). (Scale bars in A, C, 200 μm ; B, D, 50 μm)

