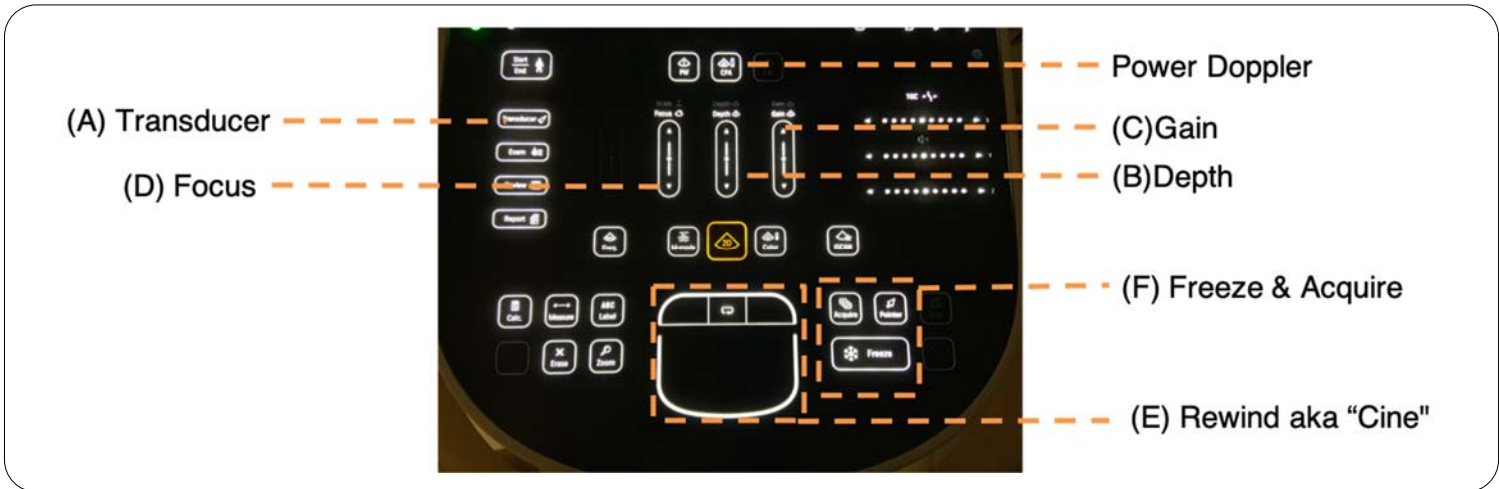


APPENDIX B

POINT OF CARE ULTRASOUND IN UROLOGY:

design and evaluation of a feasible introductory training program for Canadian residents



Kidney and Bladder

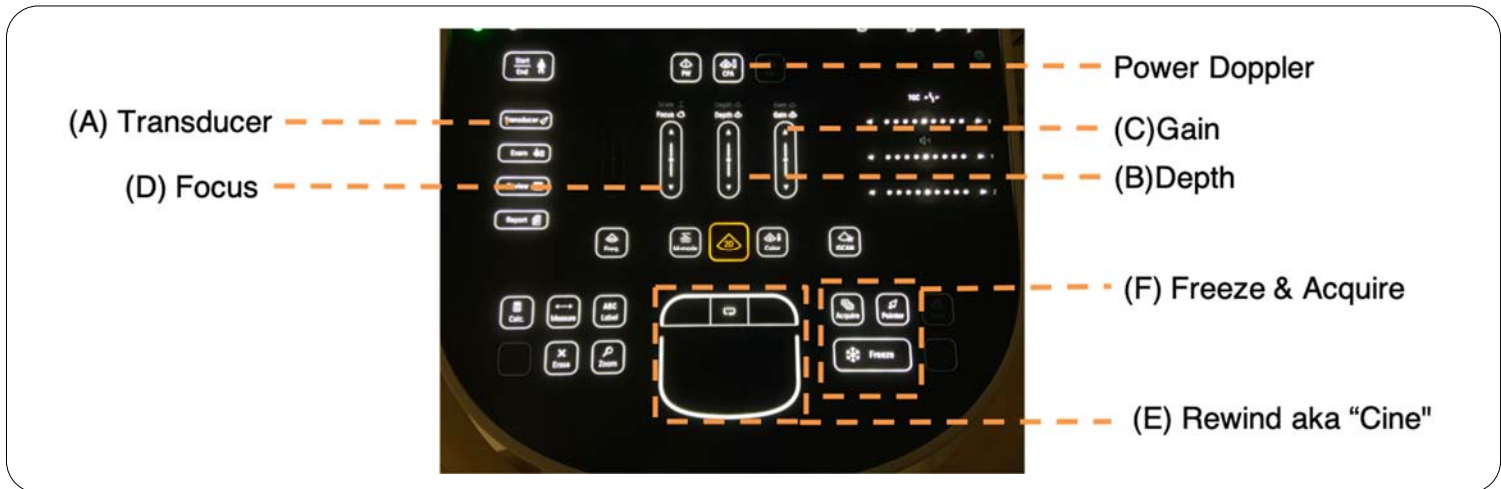
1. Load the curved transducer **(A)**, pre-set: "abdominal"
2. Patient in lateral decubitus position, place transducer parallel to mid-axillary line under last rib OR posterior axillary line
3. Improve image: depth **(B)**, gain **(C)**, focus **(D)**
4. Interrogate the kidney in longitudinal and transverse
5. Rewind to find best image **(E)**, Freeze **(F)** and Acquire Image **(F)**



APPENDIX B

POINT OF CARE ULTRASOUND IN UROLOGY:

design and evaluation of a feasible introductory training program for Canadian residents



Testicular

1. Load the linear transducer **(A)**, pre-set: "small parts"
2. Patient supine, appropriately draped, transducer transverse over both testicles
3. Improve image: depth **(B)**, gain **(C)**, focus **(D)**
4. Interrogate the testes in longitudinal and transverse
5. Turn power doppler on to assess for vascularity **(G)**; Adjust box size & gain **(F)**; Freeze and acquire image **(F)**

