

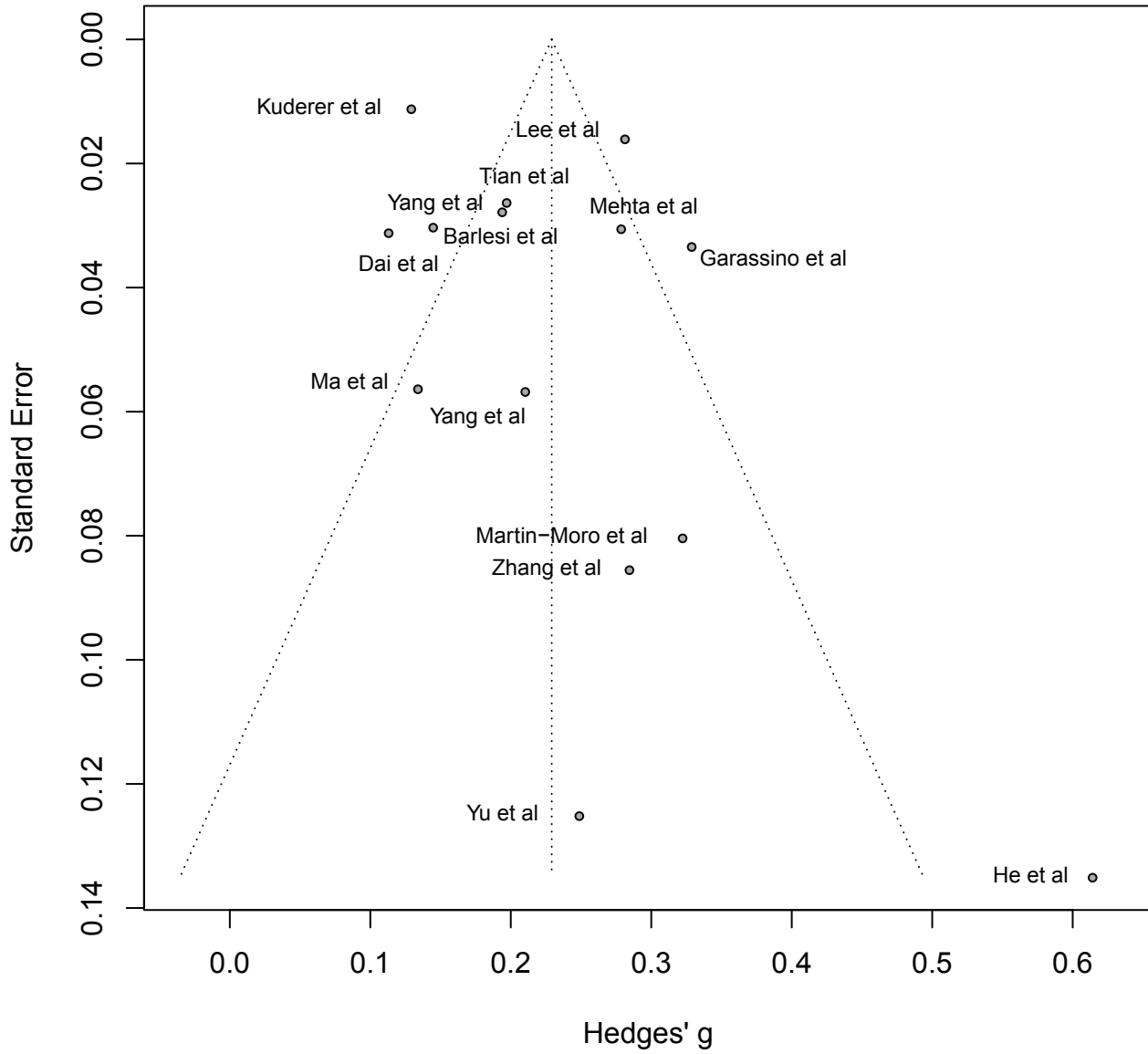
Supplementary Material

Supplementary Table 1. Summary of Quality Assessment of Cohort Studies using the Newcastle-Ottawa Scale (NOS)

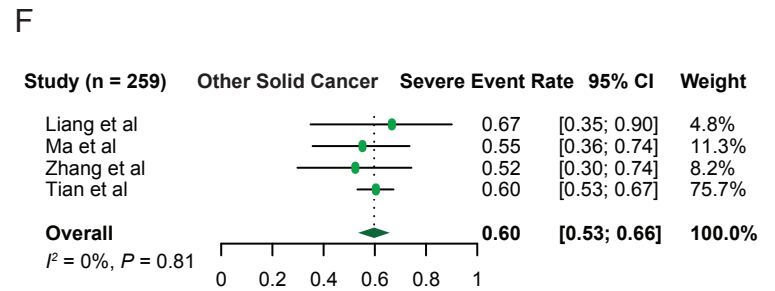
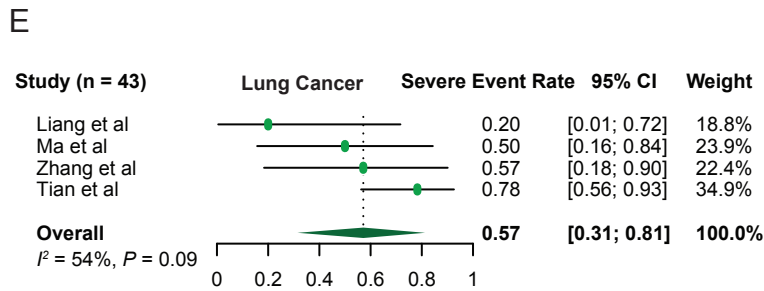
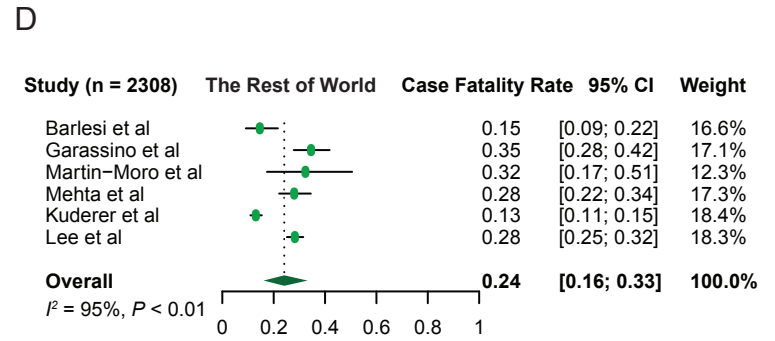
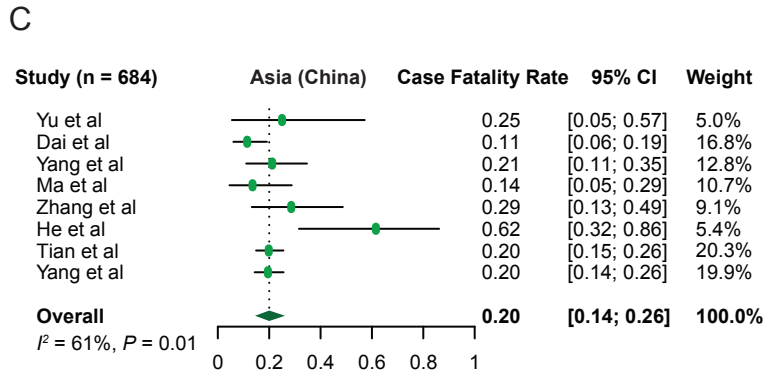
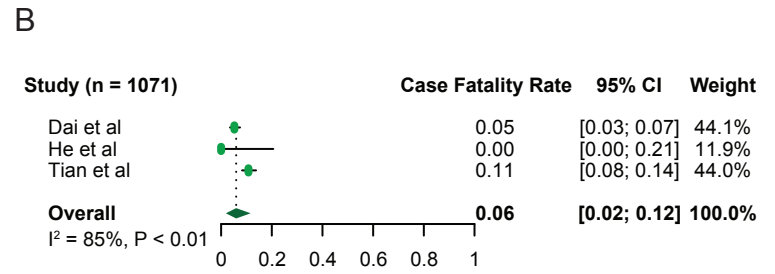
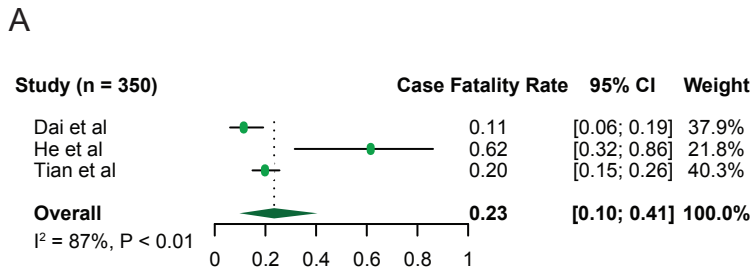
STUDY, YEAR	SELECTION				COMPARABILITY	OUTCOMES			Total
	REPRESENTATIVENESS OF THE EXPOSED COHORT	SELECTION OF THE NON-EXPOSED COHORT	ASCERTAINMENT OF EXPOSURE	DEMONSTRATION THAT OUTCOME OF INTEREST WAS NOT PRESENT AT START OF STUDY	COMPARABILITY OF COHORTS ON THE BASIS OF THE DESIGN OR ANALYSIS	ASSESSMENT OF OUTCOME	WAS FOLLOW-UP LONG ENOUGH FOR OUTCOMES TO OCCUR?	ADEQUACY OF FOLLOW UP OF COHORTS	
Garassino et al., 2020	*	*	*	*	**	*	-	*	8
Dai et al., 2020	*	*	*	*	*	*	*	*	9
Liang et al., 2020	*	*	*	*	*	*	-	*	7
Mehta et al., 2020	*	-	*	*	**	*	-	*	7
Ma et al., 2020	*	*	-	*	-	*	-	*	5
He et al., 2020	*	*	*	*	-	*	-	*	6
Tian et al., 2020	*	*	*	-	**	*	-	*	7
Yang et al., 2020	*	*	*	*	**	*	*	*	9
Kuderer et al., 2020	*	*	*	*	**	*	-	*	8
Lee et al., 2020	*	*	*	*	**	*	-	*	8

Supplementary Table 2. Univariate model of factors associated with outcomes in patients with active tumor

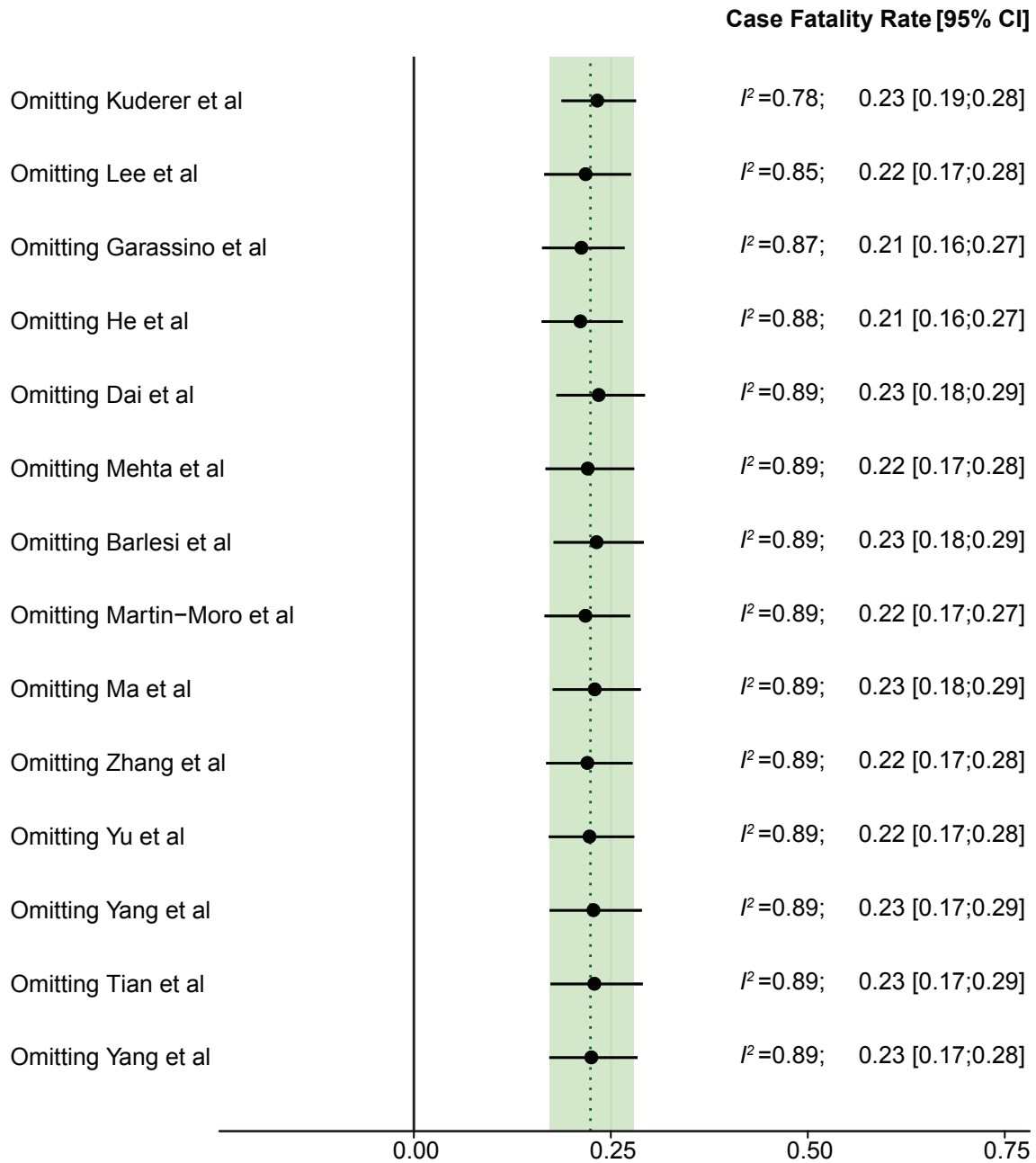
No. = 86	Univariate Logistic Regression Analysis		
	Odds Ratio	95% CI	P Value
Treatment vs No	0.792	0.317-1.976	0.617
Chemotherapy vs No	0.76	0.264-2.186	0.611
Immunotherapy vs No	3.231	0.551-18.956	0.194
Targeted Therapy vs No	0.308	0.054-1.759	0.185
Radiotherapy vs No	0.449	0.124-1.975	0.223
Surgery vs No	0.808	0.220-2.964	0.747



Supplementary Figure 1. Funnel plot and Egger's test showed no publication bias in the overall population ( $P = 0.17$ ).



Supplementary Figure 2. Forest plot of case fatality rate in cancer patients with COVID-19 (A) and in COVID-19 patients without cancer (B) in three studies as indicated; Forest plot of case fatality rate in Asia (C) or the rest of the world (D), and the severe event rate in lung cancer patients with COVID-19 (E) or other solid cancer with COVID-19 (F).



Supplementary Figure 3. The sensitivity analysis was performed using 'leave-one-out' per study per time approach. Case fatality rate of COVID-19 patients with cancer was shown here.