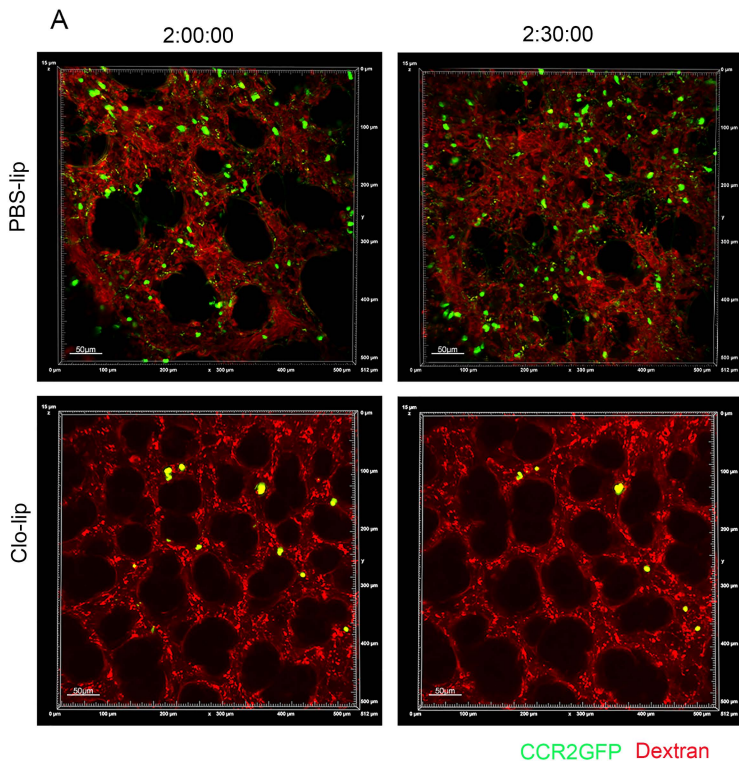


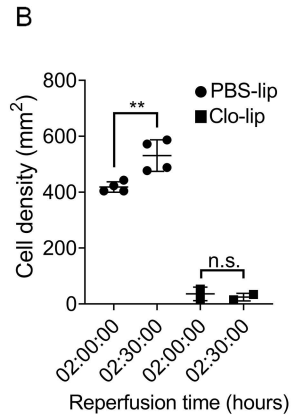
Supplemental Figure 1. Allografts from donor administered with Clodronate liposomes have decreased recruitment of classical monocytes. Intravital two-photon imaging at 2 hours through 2 hours and 30 minutes after reperfusion. (A) Representative still images of donor lungs from PBS-liposomes (PBS-lip) and Clodronate-liposomes (Clo-lip) treated allografts. Green, CCR2-GFP (recipient); red, dextran blood vessels. (B) CCR2-GFP cell density calculated using NIH ImageJ software in PBS-lip and Clo-lip injected mice. Data was analyzed by Unpaired Student's t-test. n.s: not significant; ** $p < 0.01$.

Supplemental Figure 2. Cells of donor and recipient origin in allograft 24 hours post-transplant. Allogeneic lung transplant was performed using wild-type C57BL/6J CD45.2 as recipient and BALB/c CD45.1 as donor. Flow cytometry was performed in naïve lungs as well as in the allograft. Neutrophils were gated as live CD45⁺Ly6G⁺CD11b⁺CD24⁺SSC^{hi}; Alveolar macrophages (AM) were gated as live CD45⁺Ly6G⁻NK1.1⁻SiglecF⁺CD64⁺CD11c⁺; Interstitial macrophages (IM) were gated as live CD45⁺Ly6G⁻NK1.1⁻CD11b⁺MHCII⁺CD11c⁺CD64⁺CD24⁻; Classical monocytes (CM) were gated as live CD45⁺Ly6G⁻NK1.1⁻CD11b⁺Siglec⁻CD24⁻Ly6C⁺; Non-classical monocytes (NCM) were gated as live CD45⁺Ly6G⁻NK1.1⁻CD11b⁺Siglec⁻CD24⁻Ly6C⁺.

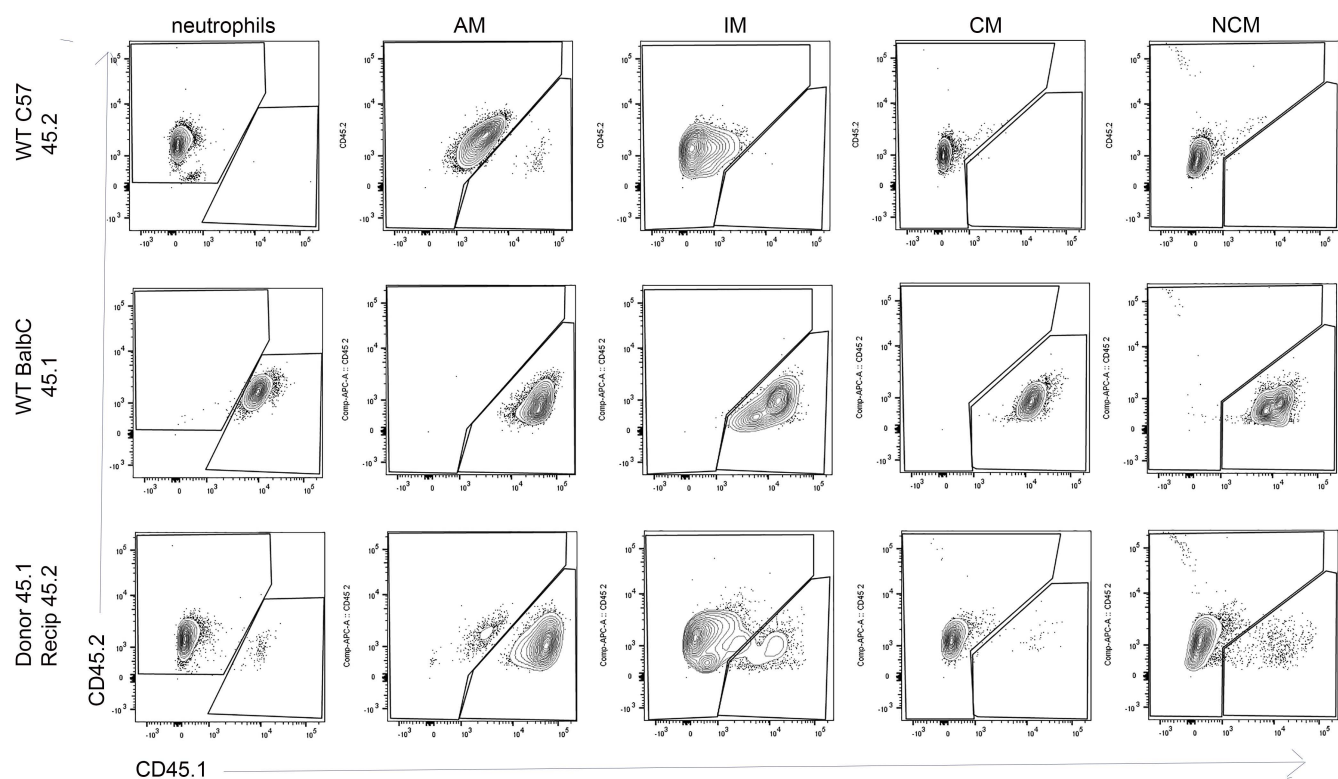
Supplemental Figure 3. RFP positive cells of donor origin in allograft 24 hours post-transplant. Allogeneic lung transplant was performed using wild-type *Ccl2-rfp* as wild-type. Flow cytometry was performed to determine RFP positive cells. Figure shows representative gating of alveolar macrophages (AM; live CD45⁺Ly6G⁻NK1.1⁻SiglecF⁺CD64⁺CD11c⁺), interstitial macrophages (IM; live CD45⁺Ly6G⁻NK1.1⁻CD11b⁺MHCII⁺CD11c⁺CD64⁺CD24⁻) and non-classical monocytes (NCM; live CD45⁺Ly6G⁻NK1.1⁻CD11b⁺Siglec⁻CD24⁻Ly6C⁺) separated by RFP expression.



CCR2GFP Dextran



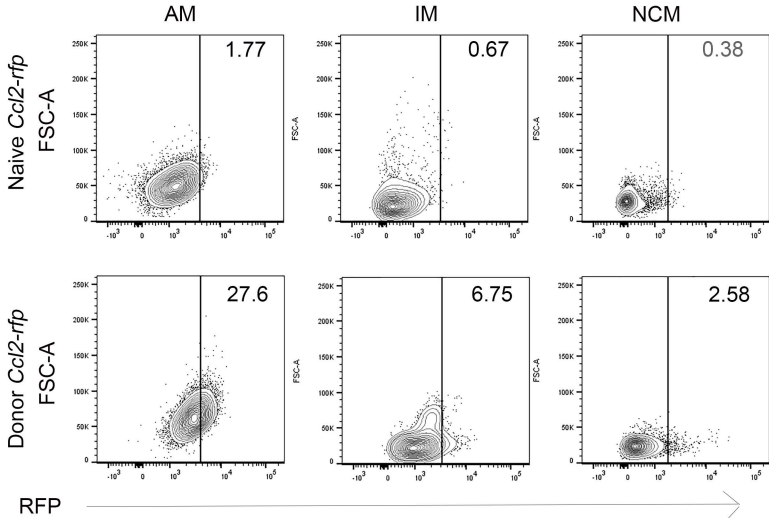
Supplemental Figure 1



CD45.1



Supplemental Figure 2



RFP

Supplemental Figure 3