

Supplementary information, Figure S4

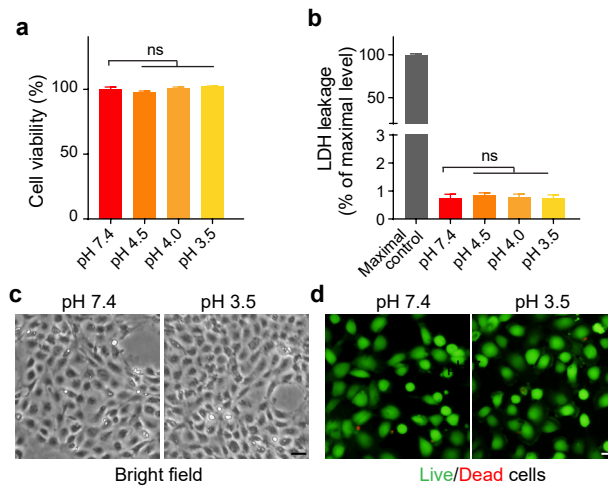


Fig. S4 Analysis of the cytotoxicity of acidic conditions on PGECs. **a**, Cell viability assay, the cell viabilities were examined by CCK-8 assay kit after 30-min exposure to different low pH conditions ($n=12 \pm \text{SEM}$). One-way ANOVA analysis with Tukey's *post hoc* test; ns, not significant. **b**, LDH cytotoxicity assay, the LDH released into the culture supernatant by cells was detected 1 h after 30-min exposure to different low pH conditions ($n=12 \pm \text{SEM}$), and the values are normalized with the maximal LDH release control group ($n=6 \pm \text{SEM}$). One-way ANOVA analysis with Tukey's *post hoc* test; ns, not significant. **c**, Phase-contrast graphs of PGECs after incubation with the medium at pH 7.4 or 3.5 for 30 min. Scale bar, 10 μm . **d**, Live/Dead cell staining, the fluorescence images of PGECs after incubation with the medium at pH 7.4 or 3.5 for 30 min. Scale bar, 10 μm .