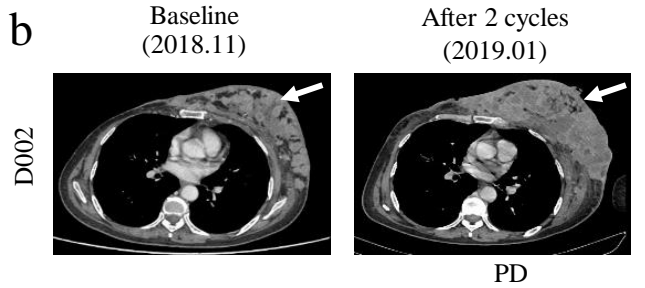


Liver metastasis

Characteristics	
Age	48
Stage at diagnosis	Non-IV
ECOG	1
Metastatic organ	Liver
No. of previous lines of therapy	2
Drugs that have been used	Anthracyclines, paclitaxel, carboplatin, vinorelbine and capecitabine
IHC results	AR (+, 80%), CD8 (+, 10%), FOXC1(-)

FUSCC NGS panel			
Variants type	Gene	Site	VAF (%)
Pathological Germline mutation	<i>BRCA2</i>	NM_000059:exon11:c.5718_5719del:p.N1906fs	-
Somatic mutation	<i>AFDN</i>	NM_001291964:exon13:c.G1553C:p.R518T	17.4
	<i>FAM47C</i>	NM_001013736:exon1:c.G1339T:p.V447L	10.9
	<i>MAST2</i>	NM_015112:exon29:c.G4306A:p.E1436K	10.5
	<i>PLK2</i>	NM_006622:exon11:c.G1468C:p.D490H	11.3
	<i>EHMT2</i>	NM_001289413:exon17:c.G2474A:p.R825H	2.5
	<i>FASN</i>	NM_004104:exon42:c.G7153C:p.E2385Q	10.9
	<i>NR1H2</i>	NM_007121:exon3:c.C35A:p.P12H	2.9
	<i>ARID1B</i>	NM_017519:exon1:c.511_521del:p.A171fs	14.7



Chest metastasis

Characteristics	
Age	56
Stage at diagnosis	IV
ECOG	1
Metastatic organ	Breast, lung, bone, lymph nodes, right chest
No. of previous lines of therapy	3
Drugs that have been used	Anthracyclines, paclitaxel, carboplatin, vinorelbine and capecitabine
IHC results	AR (-), CD8 (+, 10%), FOXC1 (+, 50%)

FUSCC NGS panel			
Variants type	Gene	Site	VAF (%)
Pathological Germline mutation	<i>BRCA1</i>	NM_007294:exon21:c.G5345A:p.W1782X	-
Somatic mutation	<i>RICTOR</i>	NM_152756:exon23:c.G2323A:p.D775N	15.4
	<i>CYP2C8</i>	NM_000770:exon1:c.G4T:p.E2X	3.2
	<i>MAP2K4</i>	NM_003010:exon1:c.G3T:p.M1I	3.8
	<i>MAP2K4</i>	NM_003010:exon2:c.C212A:p.P71Q	16.7
	<i>BMX</i>	NM_001721:exon15:c.C1534A:p.Q512K	7.3

Figure S7. Genomic features of TNBCs in arm D

(a-b) Clinical characteristics and genomic landscape of D001(a) and D002 (b).

Abbreviations: PD, progressive disease; IHC, immunohistochemistry