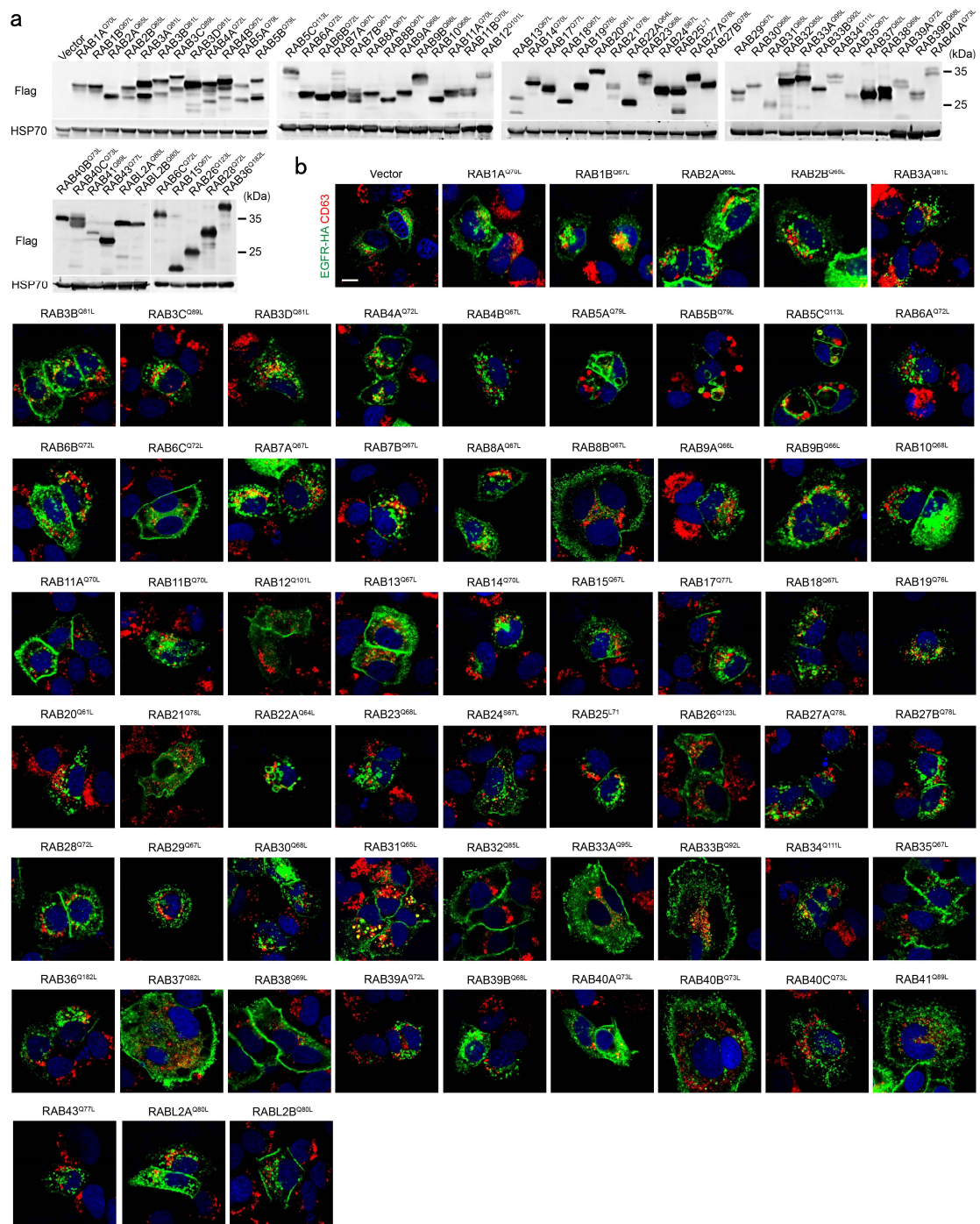


Supplementary information, Fig. S1



Supplementary information, Fig. S1. RAB31^{Q65L} specifically directs EGFR localization to CD63-positive MVEs. a Western blotting analyses of whole-cell lysates from HeLa cells stably expressing the indicated constitutively active RAB GTPase. **b** Immunofluorescence of EGFR-HA (green) with CD63 (red) in the cells used in **(a)** transiently expressing EGFR-HA under normal condition. Scale bar, 10 μm .