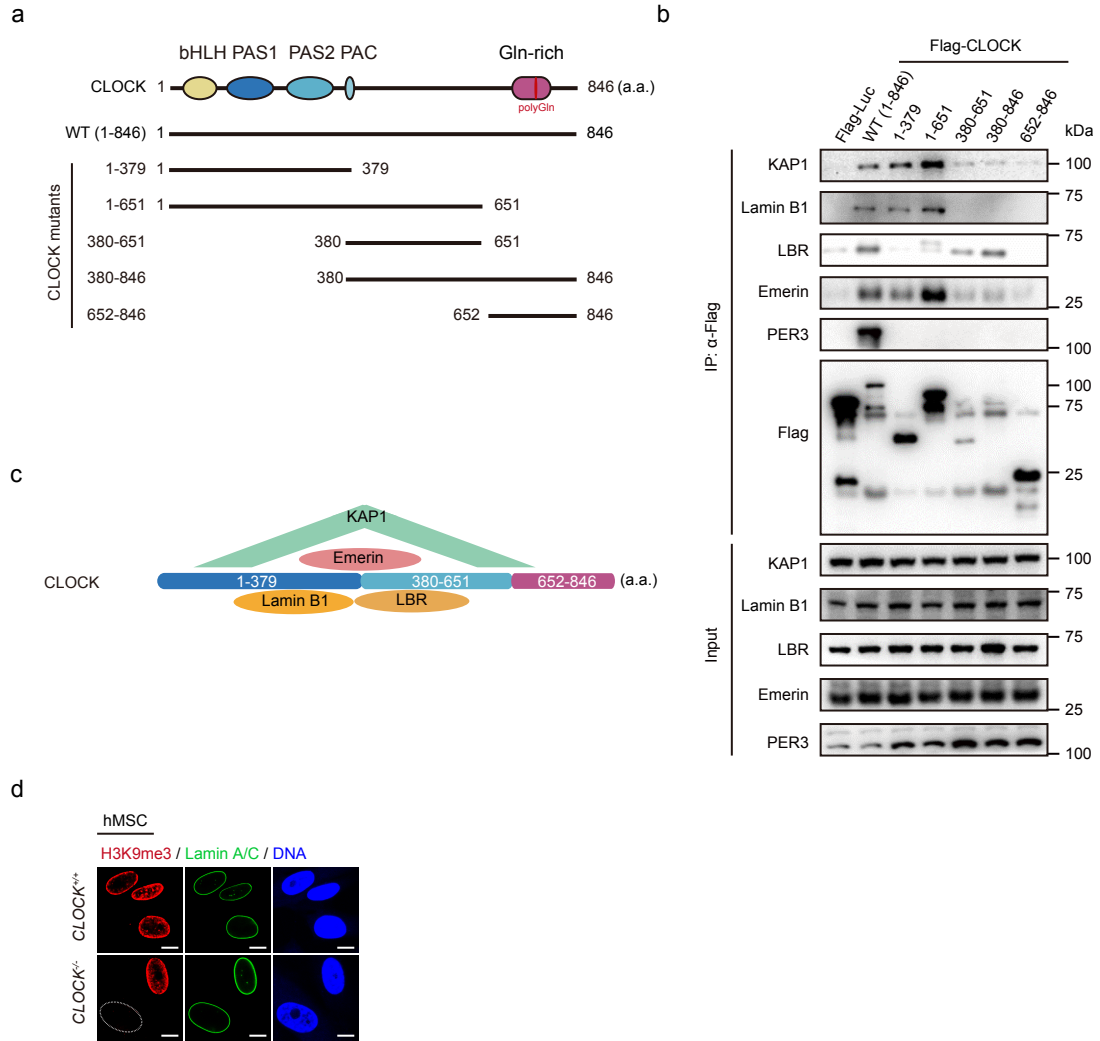


Figure S3



Supplementary information, Fig. S3 Mapping of CLOCK domains interacting with nuclear lamina proteins and KAP1. **a** Schematic diagram of different CLOCK truncations. **b** Co-IP of KAP1 and nuclear lamina proteins with exogenous full-length and truncated CLOCK proteins in HEK293T cells. Data are representative of two independent experiments. **c** Schematic diagram of a truncated CLOCK protein (a.a. 1-846) and the possible domains interacting with KAP1, LBR and Emerin according to the co-IP results shown in Supplementary information, Fig. S3b. **d** Representative images of H3K9me3 staining of late-passage *CLOCK*^{+/+} and *CLOCK*^{-/-} hMSCs (P9). Dashed lines indicate the nuclear boundaries of cells with decreased signal of H3K9me3. Related to Fig. 2f, g. Scale bars, 10 μ m.