

Figure S1. Magnesium distribution at study baseline

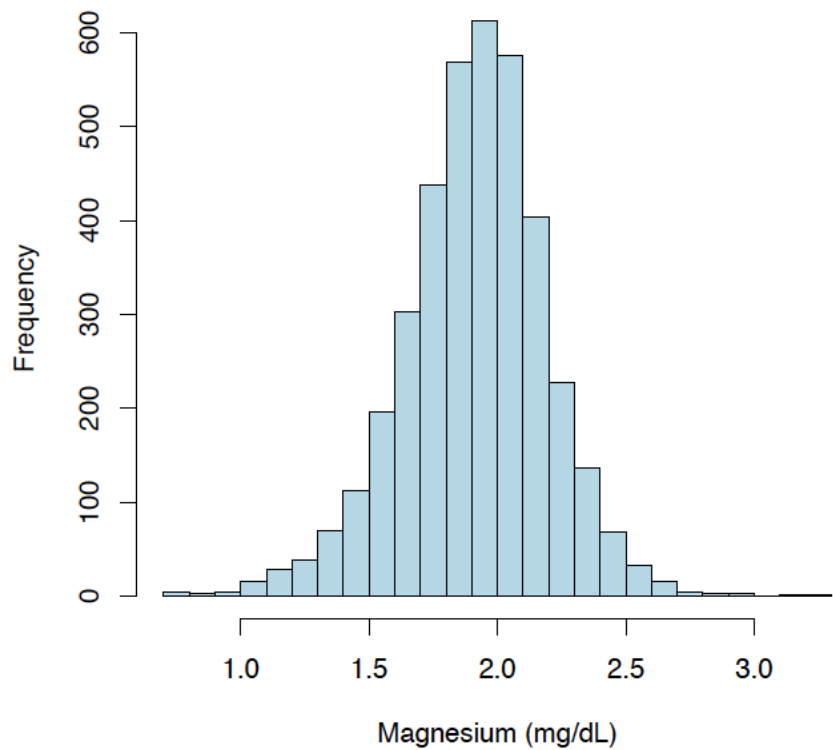


Table S1. Selected baseline characteristics of participants with missing magnesium levels

Characteristic	Patients with missing magnesium level	Patients with available magnesium level
Age, years (SD)	63.9 (8.5)	58 (11)
Women, n (%)	660 (41)	1738 (45)
Race, n (%)		
Non Hispanic White	666 (41)	1610 (42)
Non Hispanic Black	807 (49)	1615 (42)
Hispanic	112 (7)	491 (13)
Other	47 (3)	151 (4)
Hypertension, n (%)	1,430 (88)	3,325 (86)
Diabetes n, (%)	941 (58)	1,875 (48.5)