

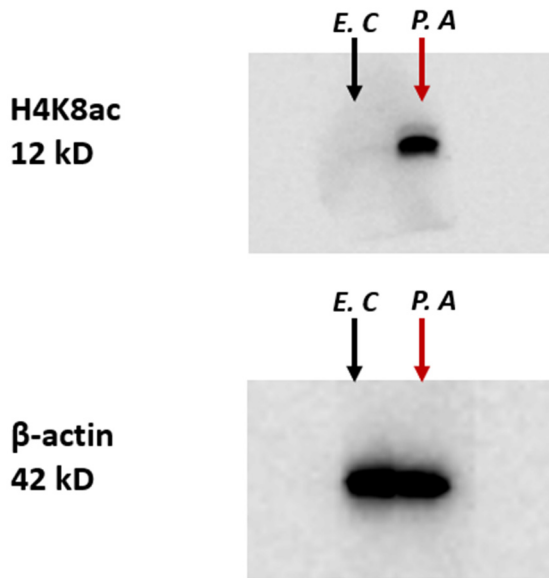
S1_Raw_images

Uncropped immunoblot images

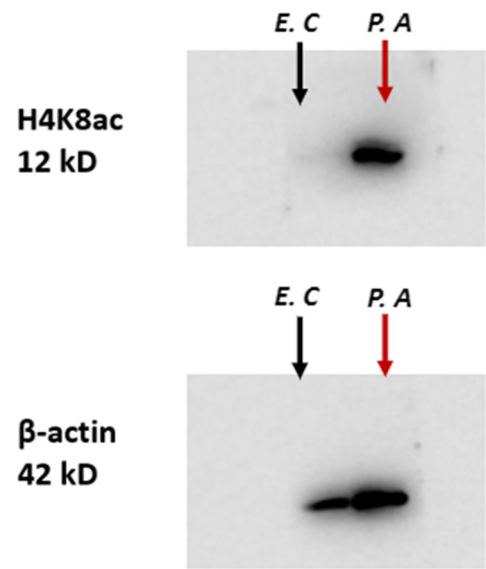
Abbreviations: 'E. C' - *E. coli*, 'P. A' - *Pseudomonas aeruginosa*, kD- kilo Dalton, 'X' - excluded sample/s, vec- vector.

Fig 1A.

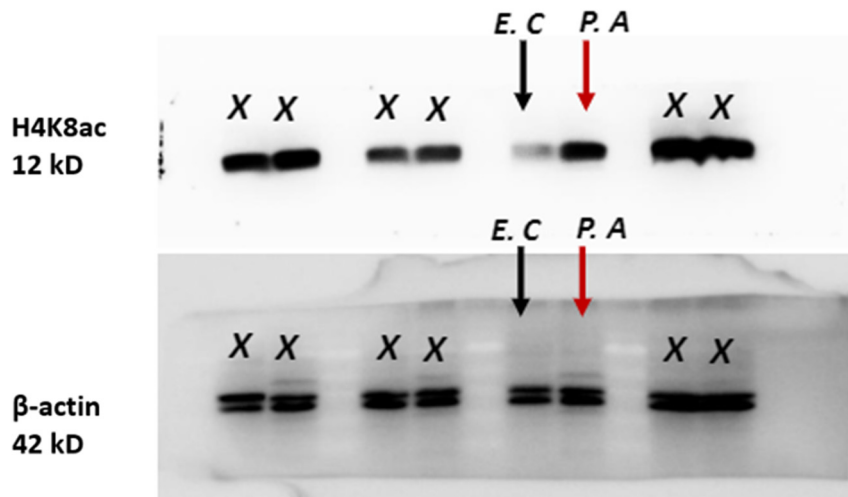
H4K8ac Repeat 1



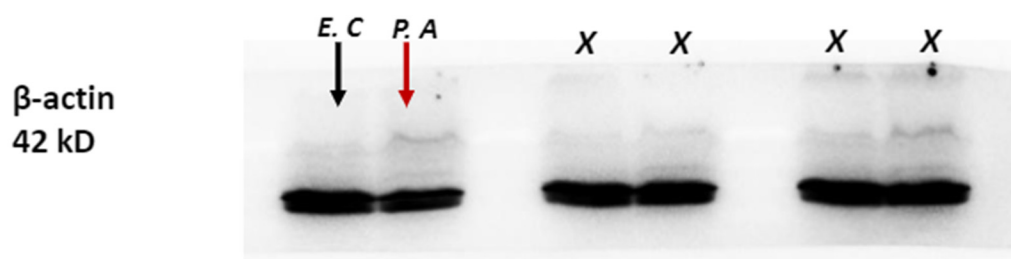
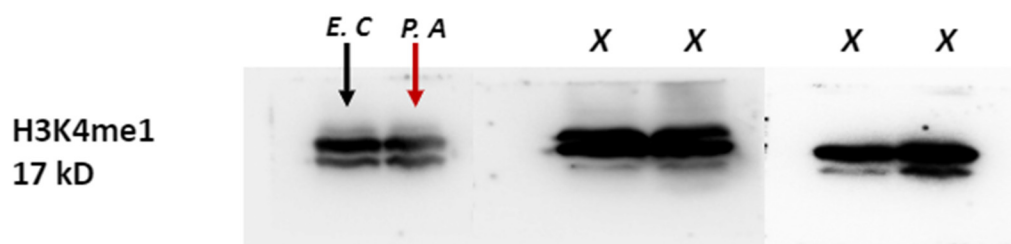
Repeat 2



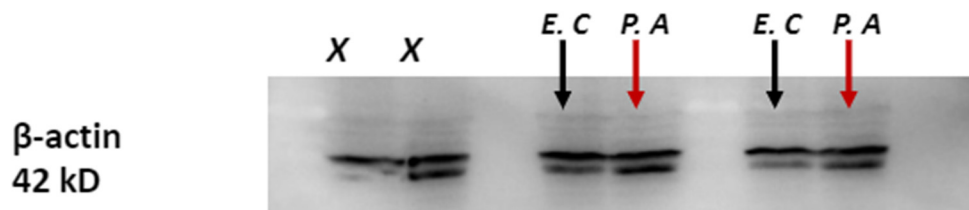
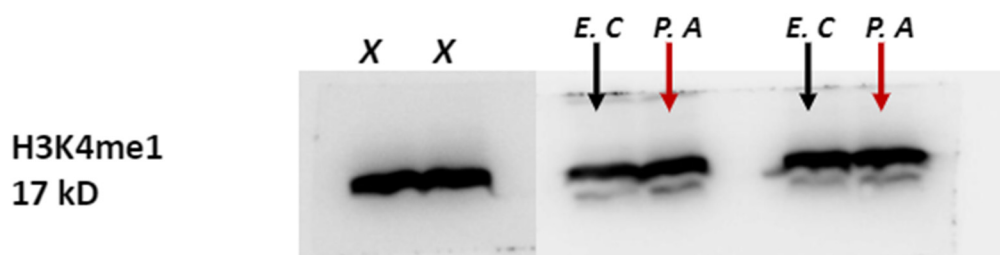
Repeat 3



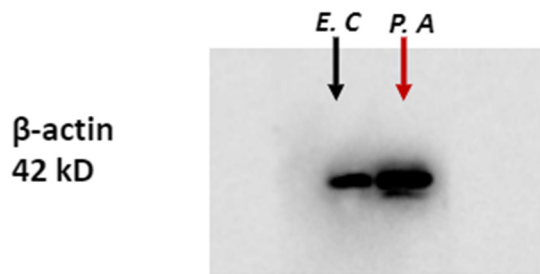
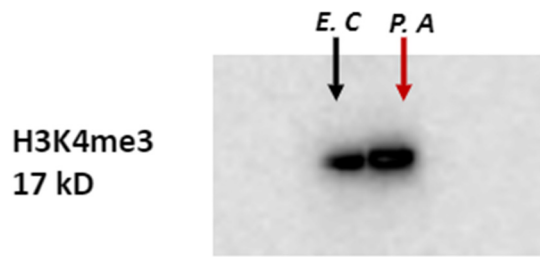
H3Kme1
Repeat 1



Repeat 2 and 3



H3K4me3
Repeat 1



Repeat 2

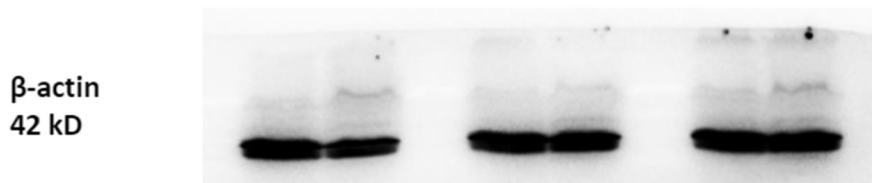
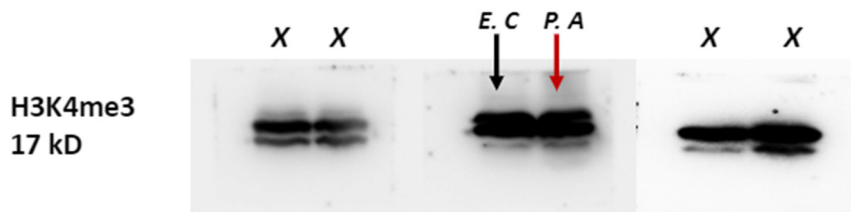
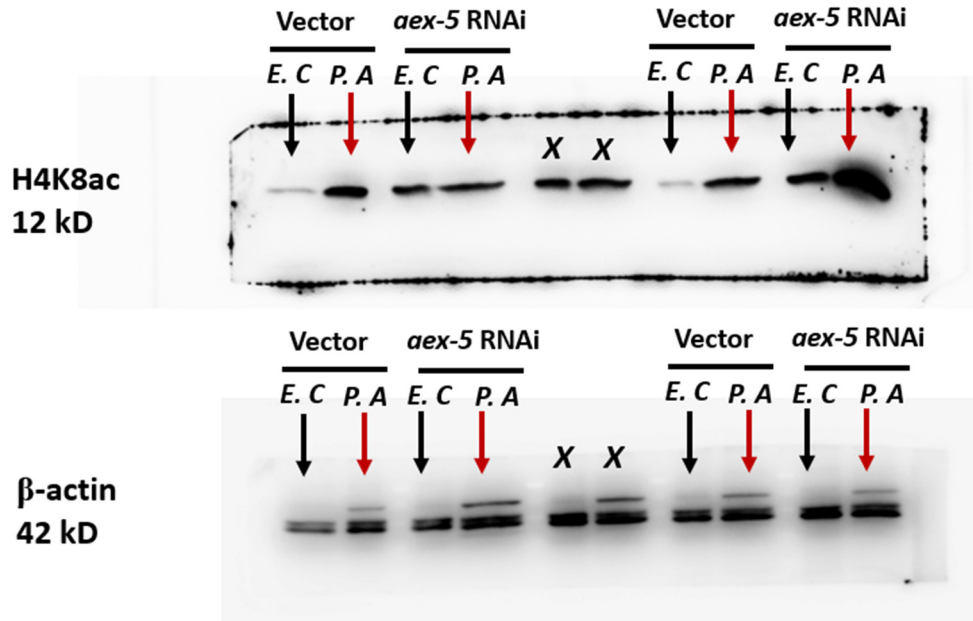
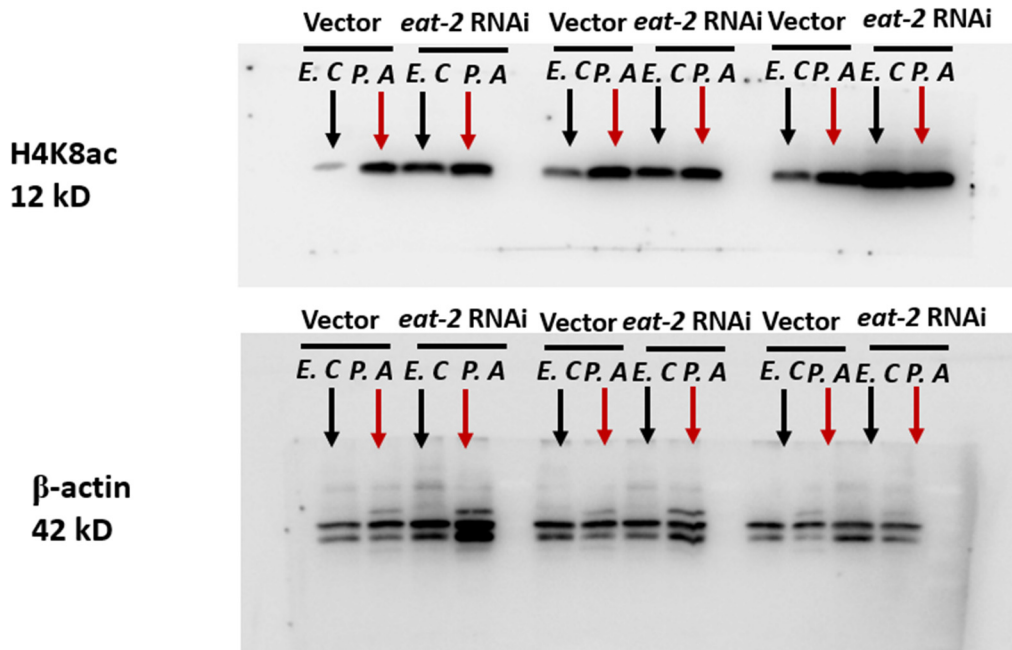


Fig. 1B

Repeat 1



Repeat 2



Repeat 3

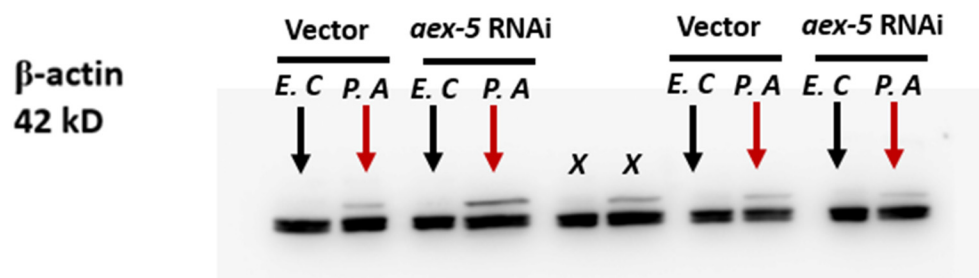
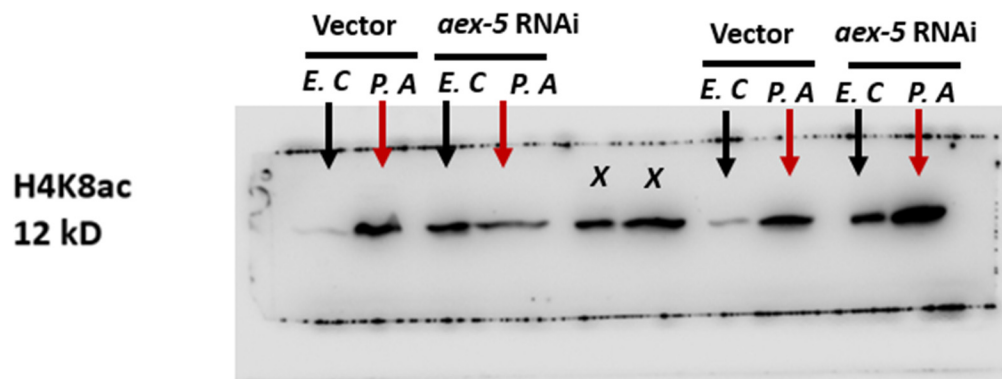
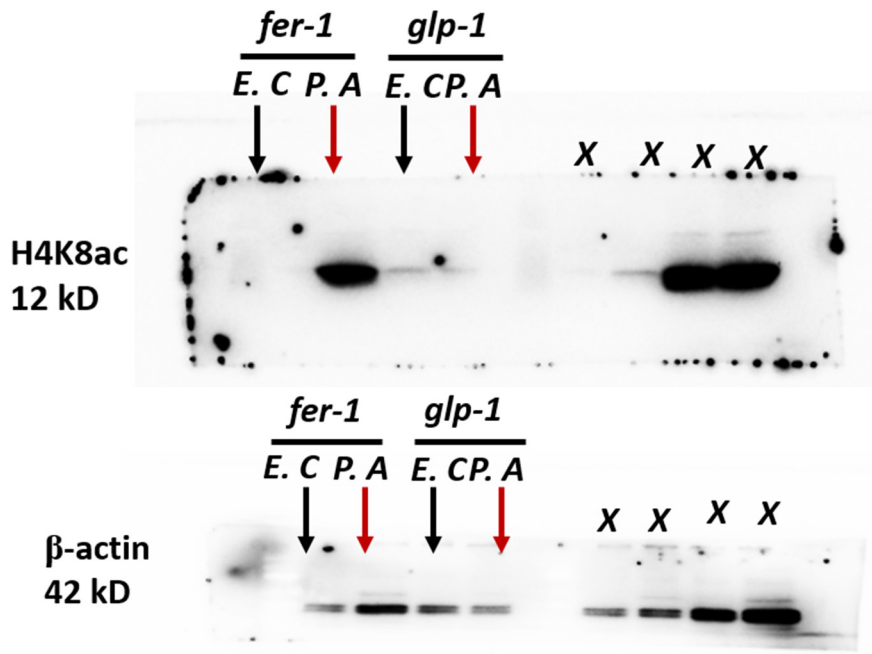
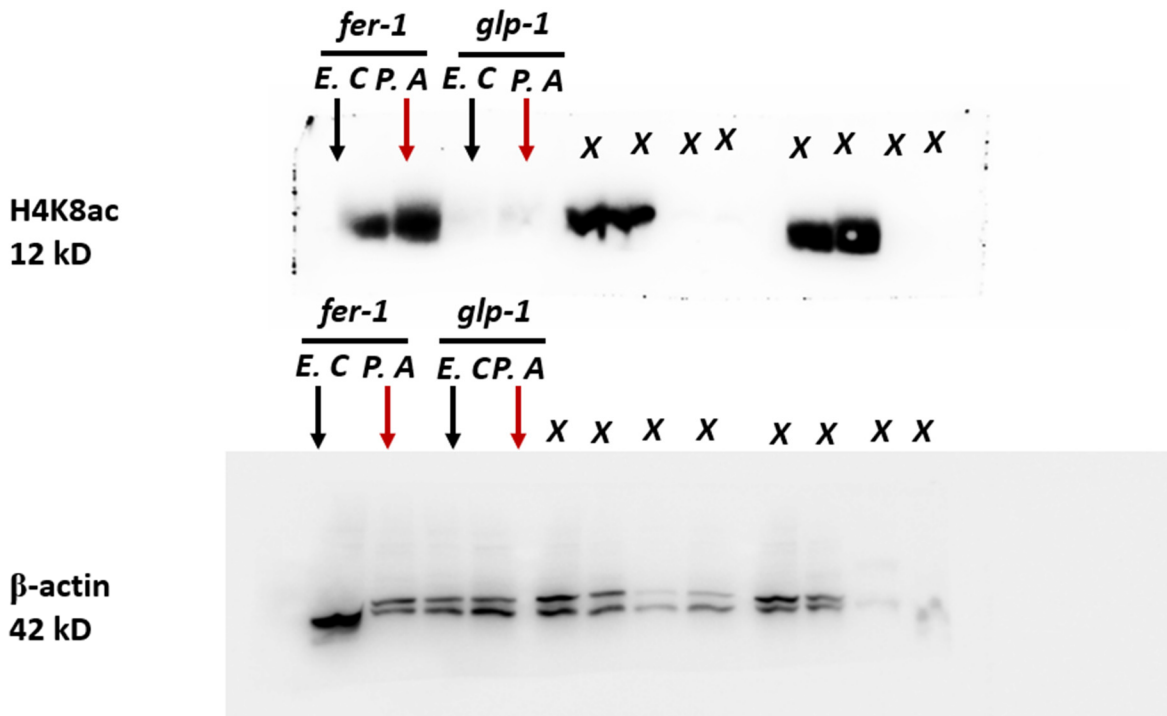


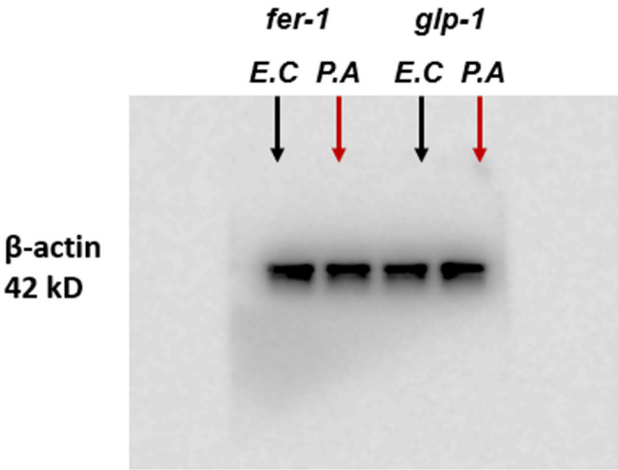
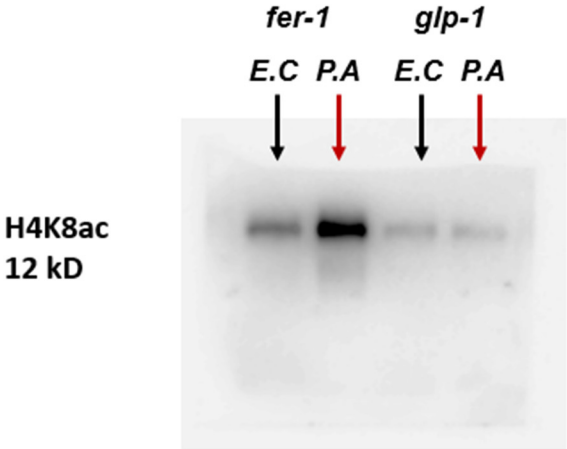
Fig 2A.
Repeat 1



Repeat 2



Repeat 3



Repeat 4

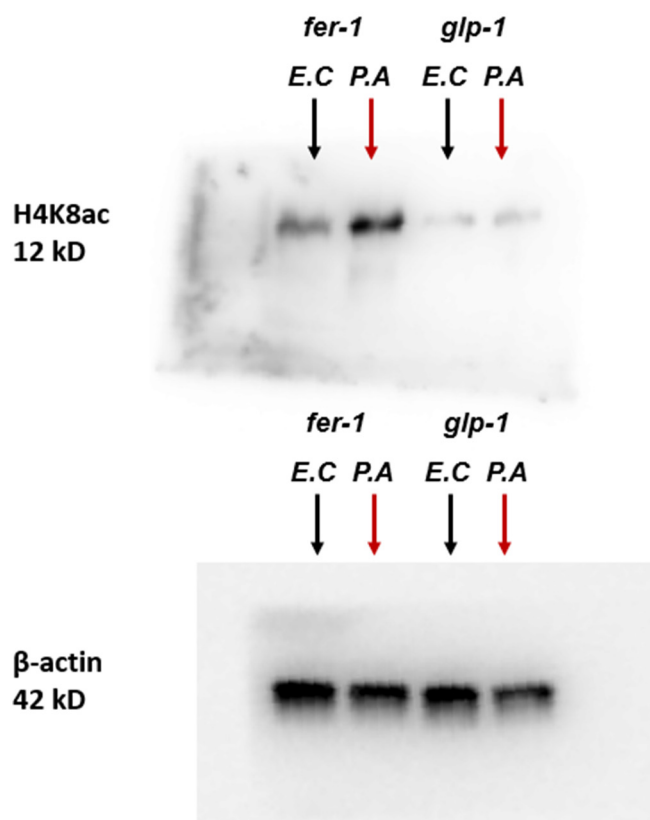
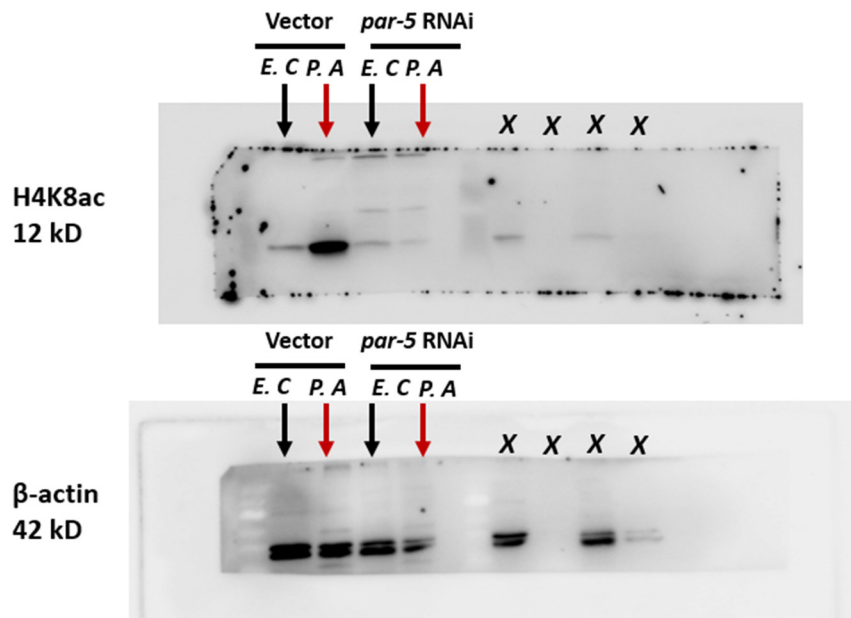
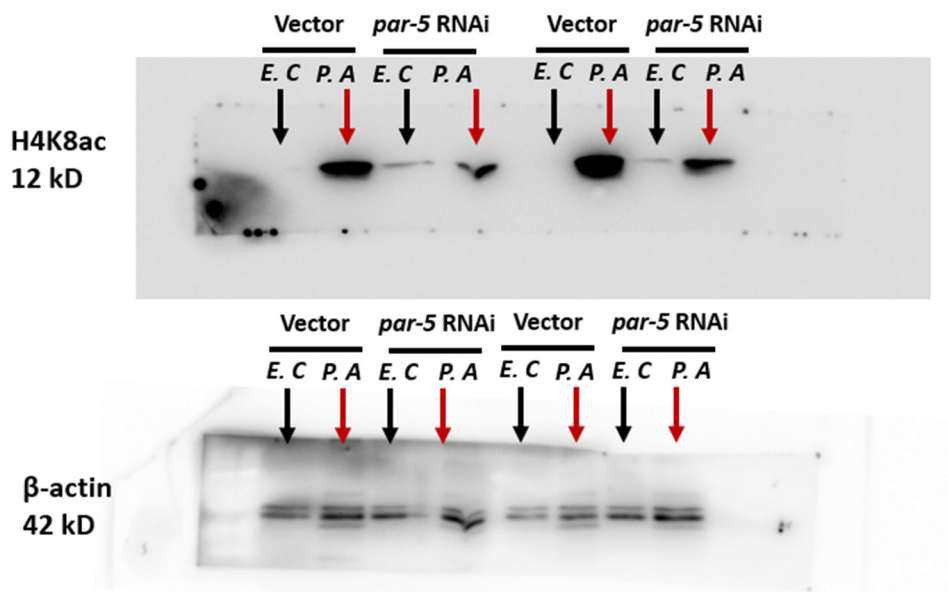


Fig. 3E

Repeat 1



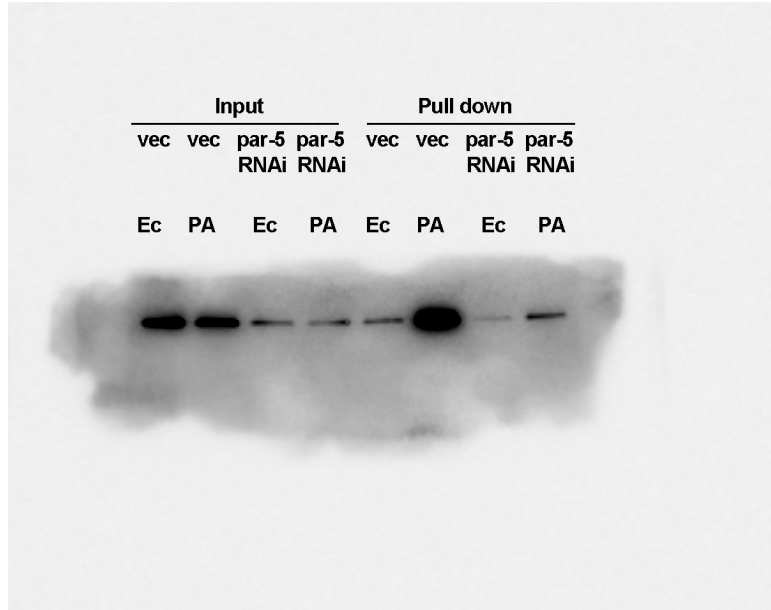
Repeat 2 and Repeat 3



S3A Fig.

Repeat 1

PAR-5
28 kD

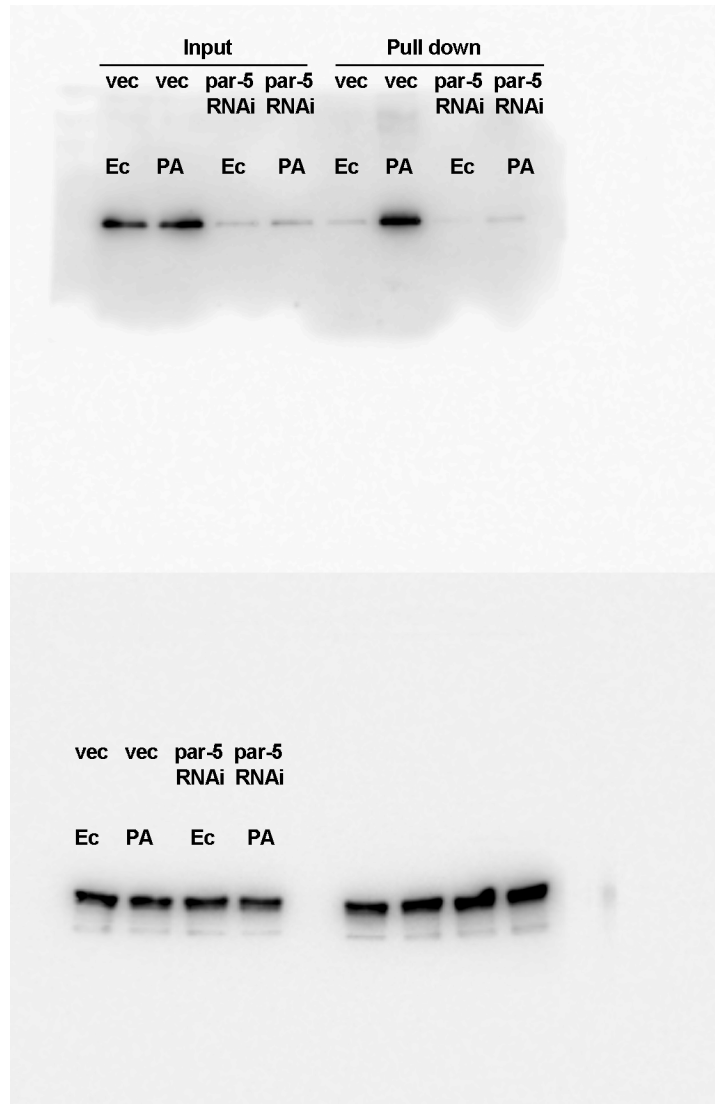


β -actin
42 kD



Repeat 2

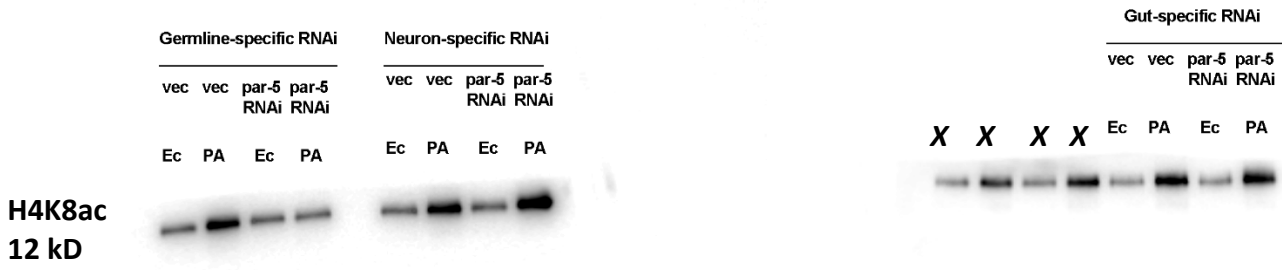
PAR-5
28 kD



β-actin
42 kD

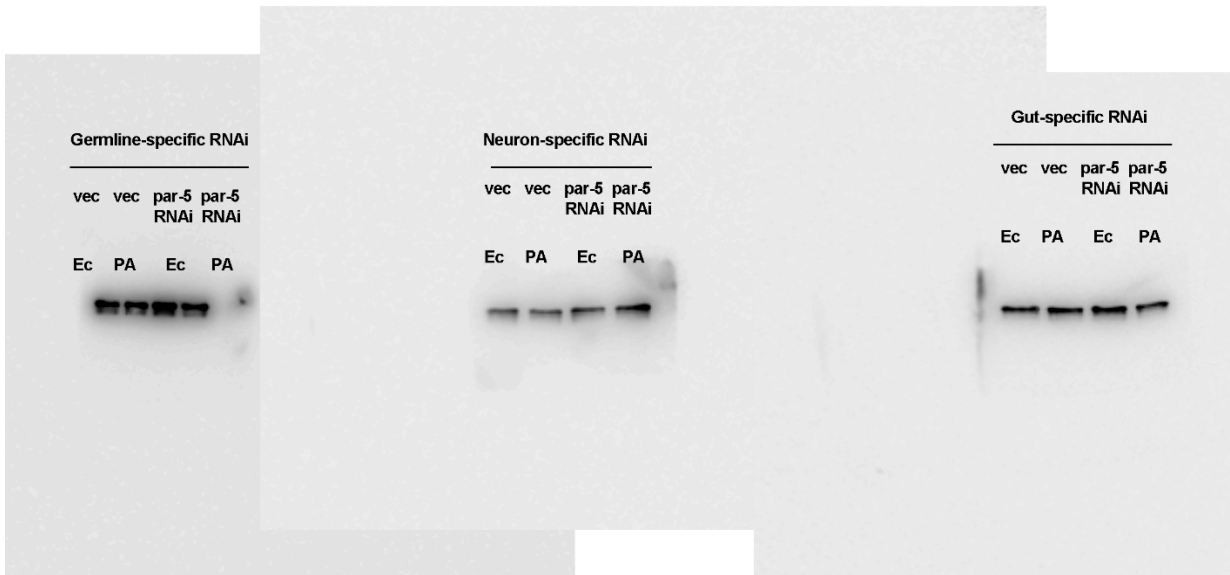
S5 Fig.

Repeat 1



H4K8ac
12 kD

β -actin
42 kD



Repeat 3

