

Supplementary figure S1

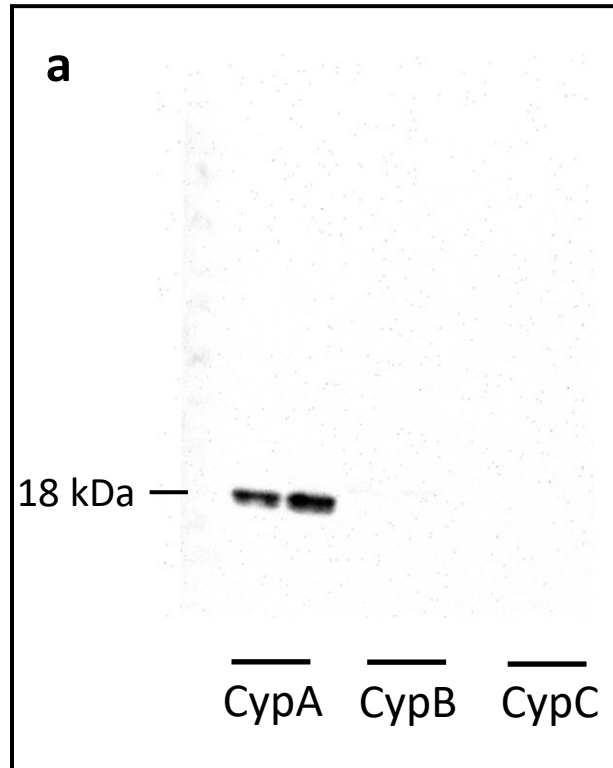


Figure S1a. Images of western blot using anti-CypA antibody. The immunoreactive bands were analysed using the Supersignal West Pico.

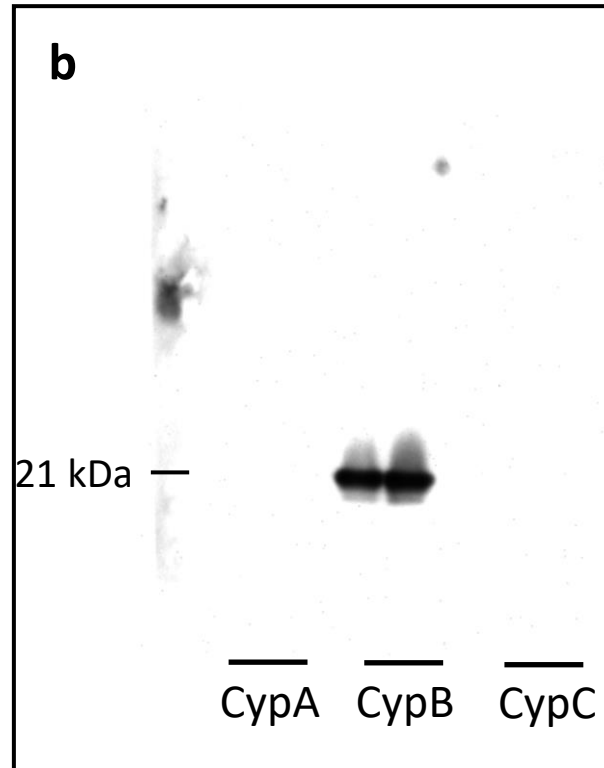


Figure S1b. Images of western blot using anti-CypB antibody. The immunoreactive bands were analysed using the Supersignal West Pico.

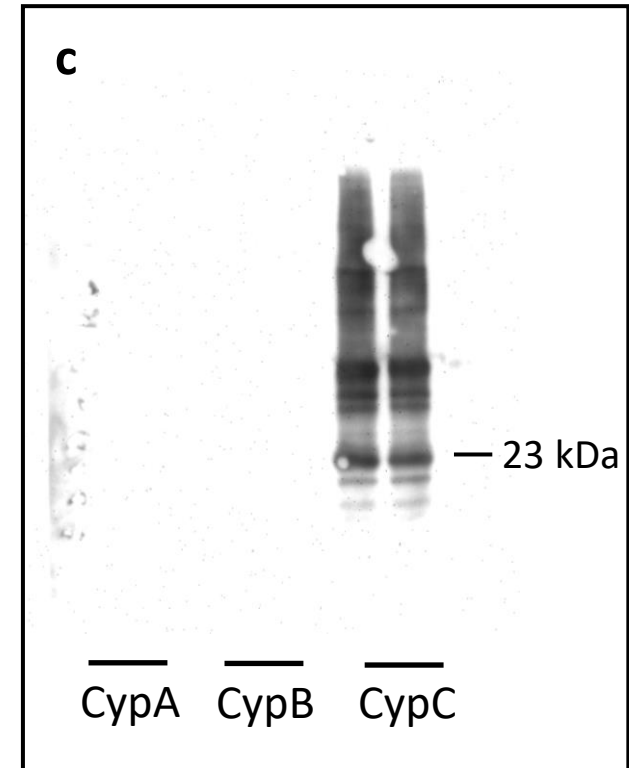


Figure S1c. Images of western blot using anti-CypC antibody. The immunoreactive bands were analysed using the Supersignal West Pico.

Supplementary figure S2

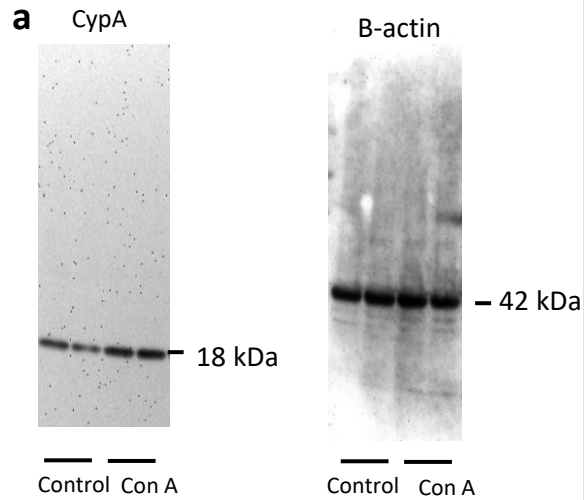


Figure S2a. Uncropped images of western blot for CypA used in figure 2d. The immunoreactive bands were analysed using the Supersignal West Pico.

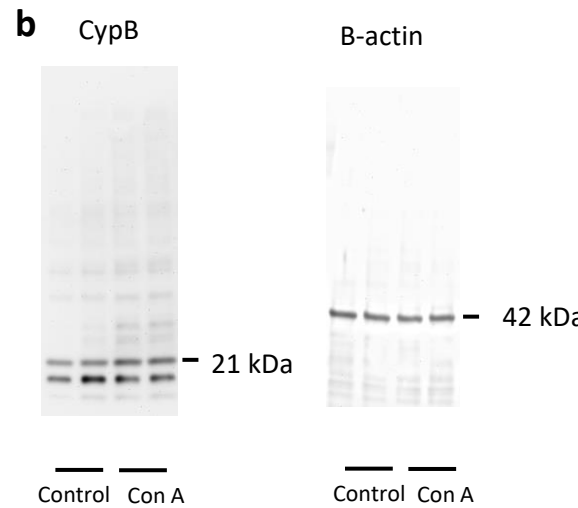


Figure S2b. Uncropped images of western blot for CypB used figure 2e. The immunoreactive bands were analysed using the Supersignal West Pico.

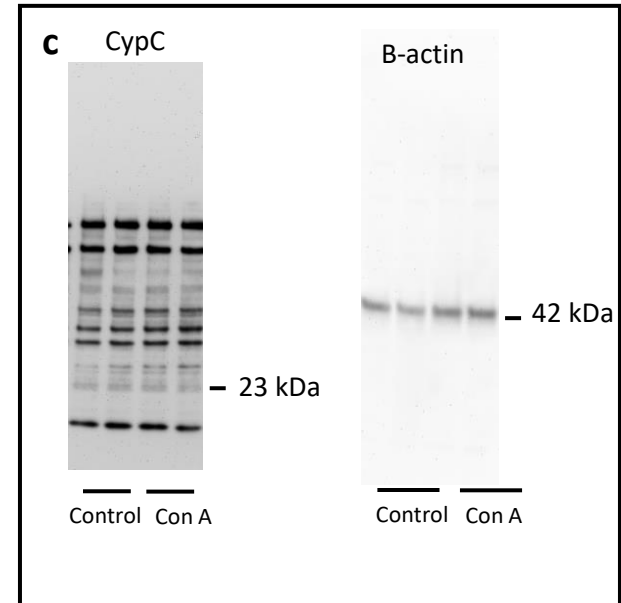


Figure S2c. Uncropped images of western blot for CypC used in figure 2f. The immunoreactive bands were analysed using the Supersignal West Femto.

Supplementary figure S3

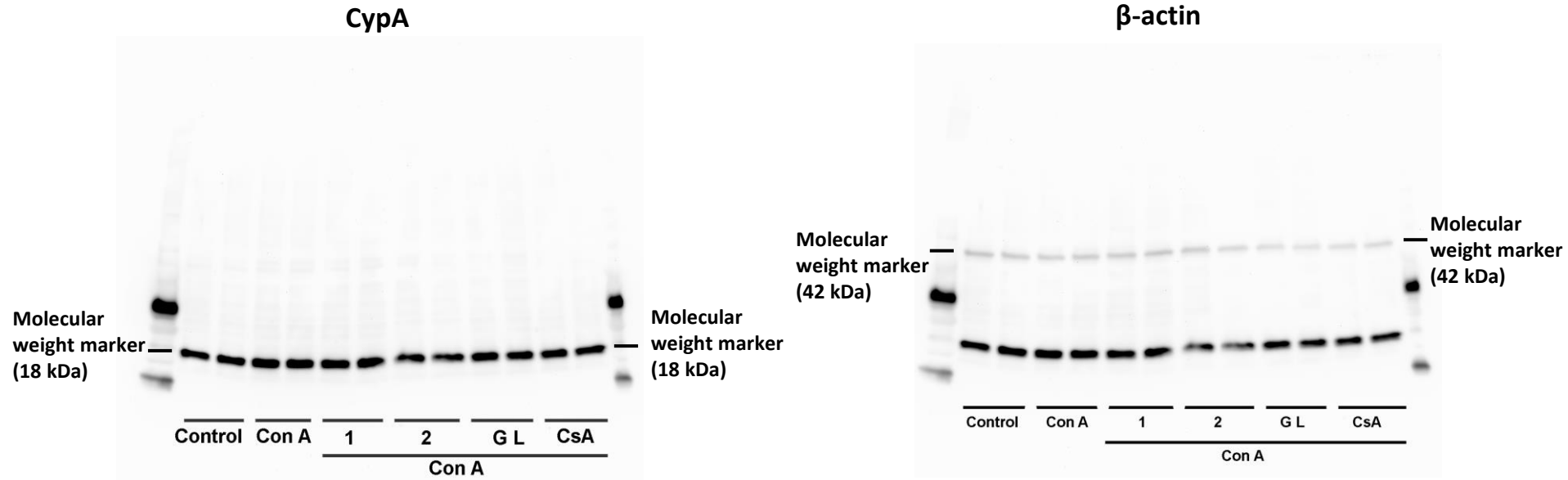


Figure S3. Uncropped images of western blot for CypA used in figure 3d. The immunoreactive bands were analysed using the Supersignal West Pico.

Supplementary figure S4

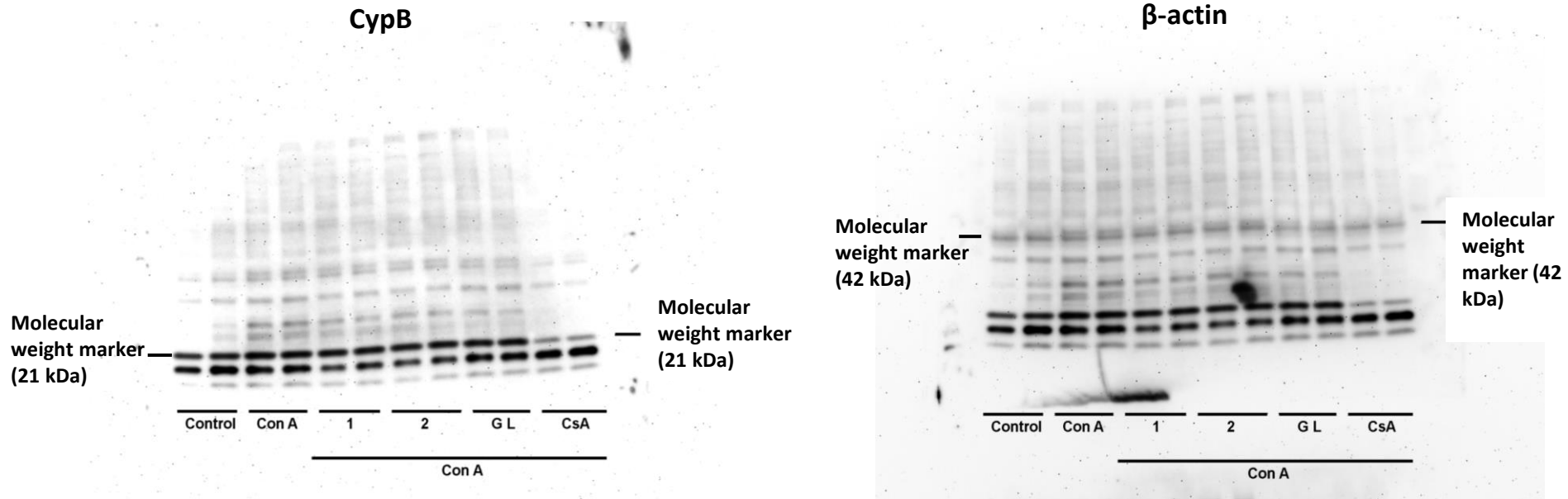


Figure S4. Uncropped images of western blot for CypB used in figure 3e. The immunoreactive bands were analysed using the Supersignal West Pico.

Supplementary figure S5

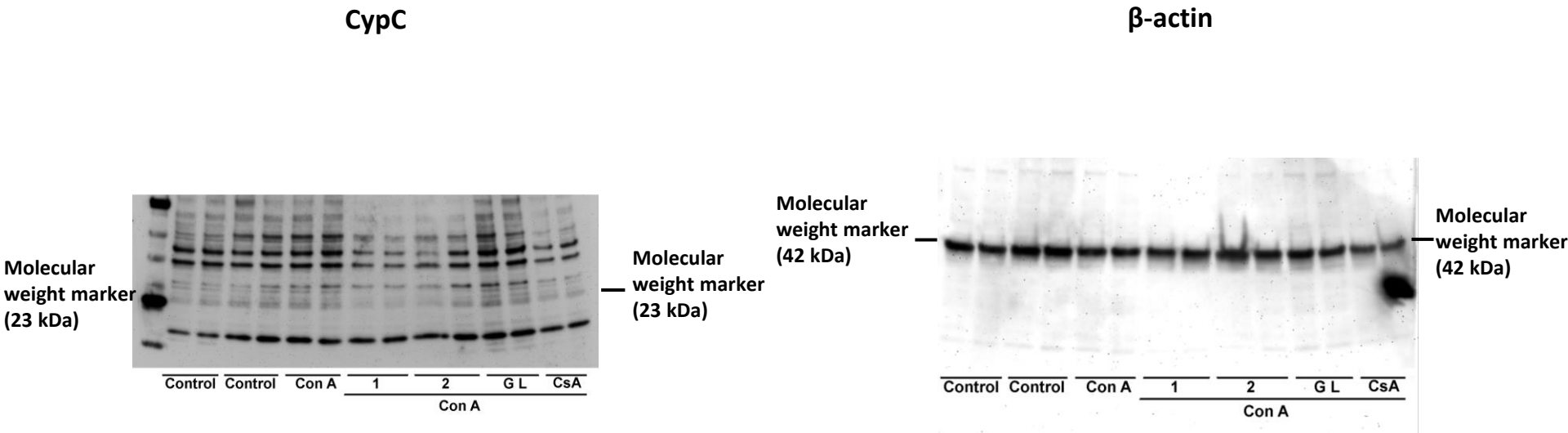


Figure S5. Uncropped images of western blot for CypC used in figure 3f. The immunoreactive bands were analysed using the Supersignal West Femto.