

Figure 1A

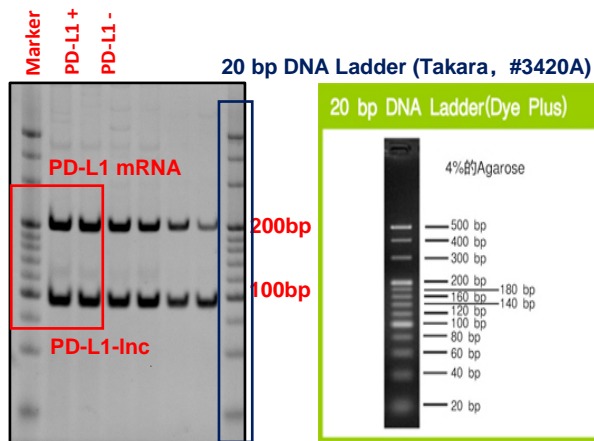


Figure 1D

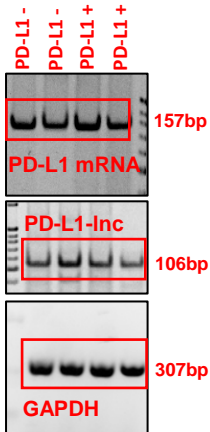


Figure 1B

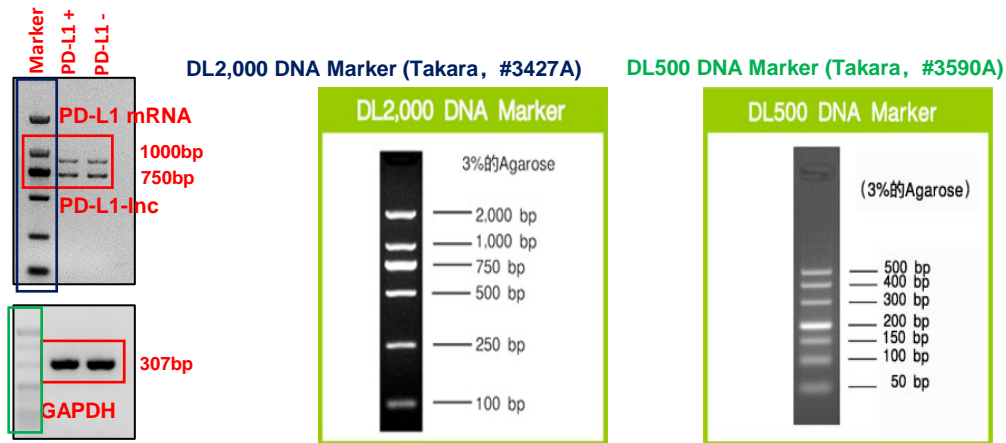


Figure 2A

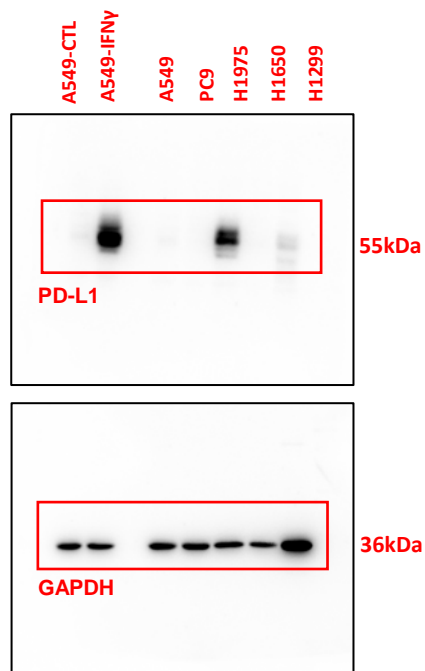


Figure 2C

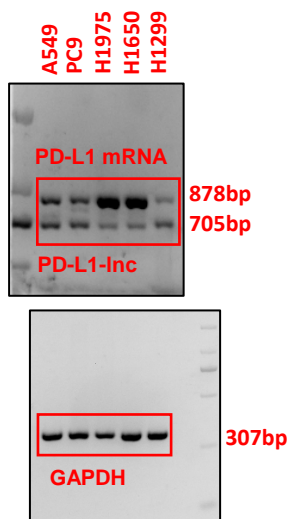


Figure 2E

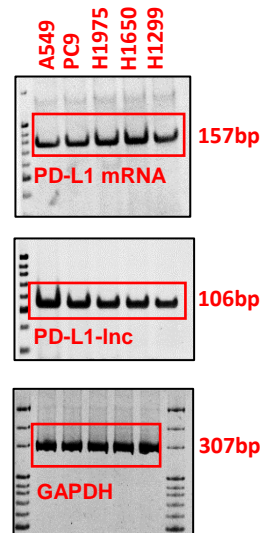


Figure 3B

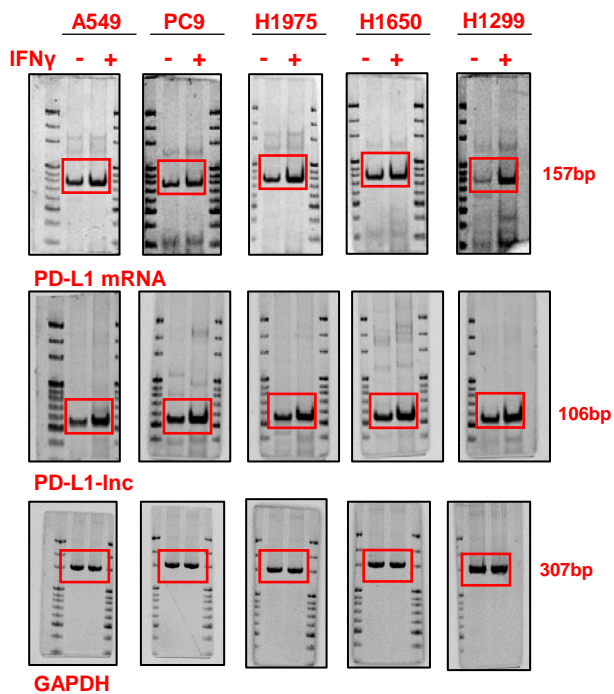


Figure 3C

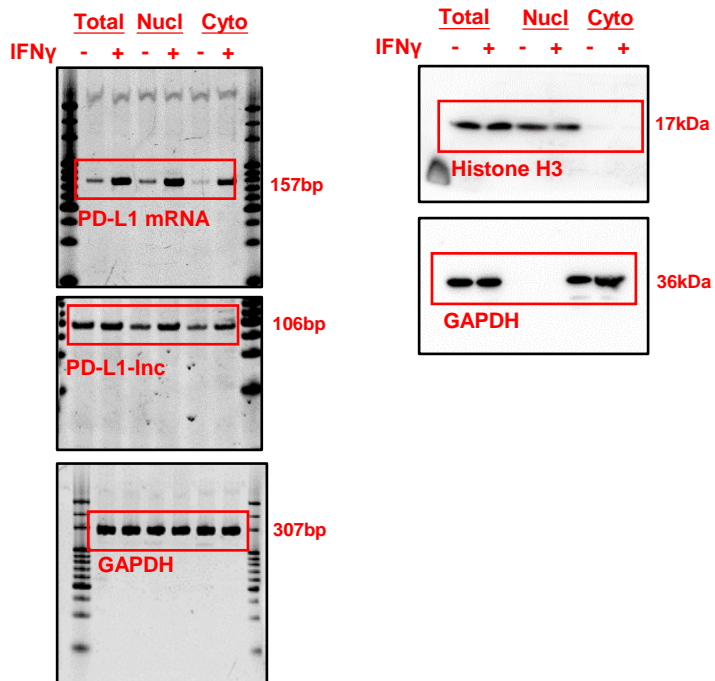


Figure 5C

30 days

CTL Vector

PD-L1-Inc

PD-L1-Inc shRNA

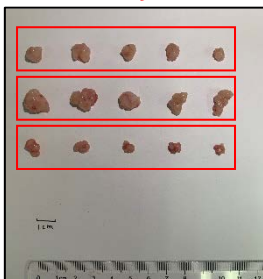


Figure 5E

CTL Vector PD-L1-Inc PD-L1-Inc shRNA

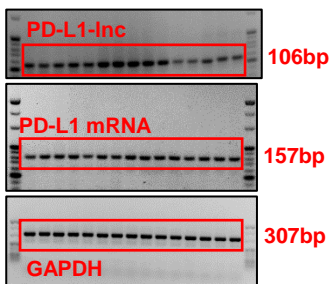


Figure 6D

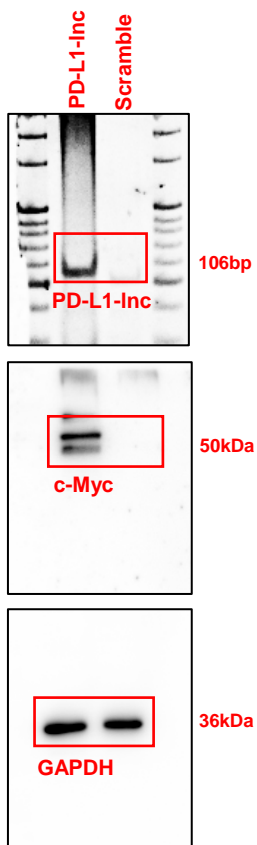


Figure 6E

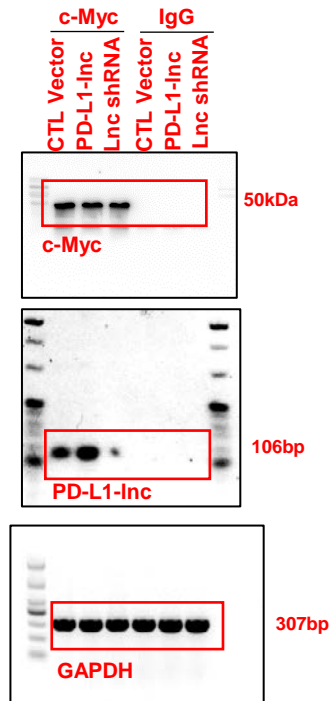


Figure 7C

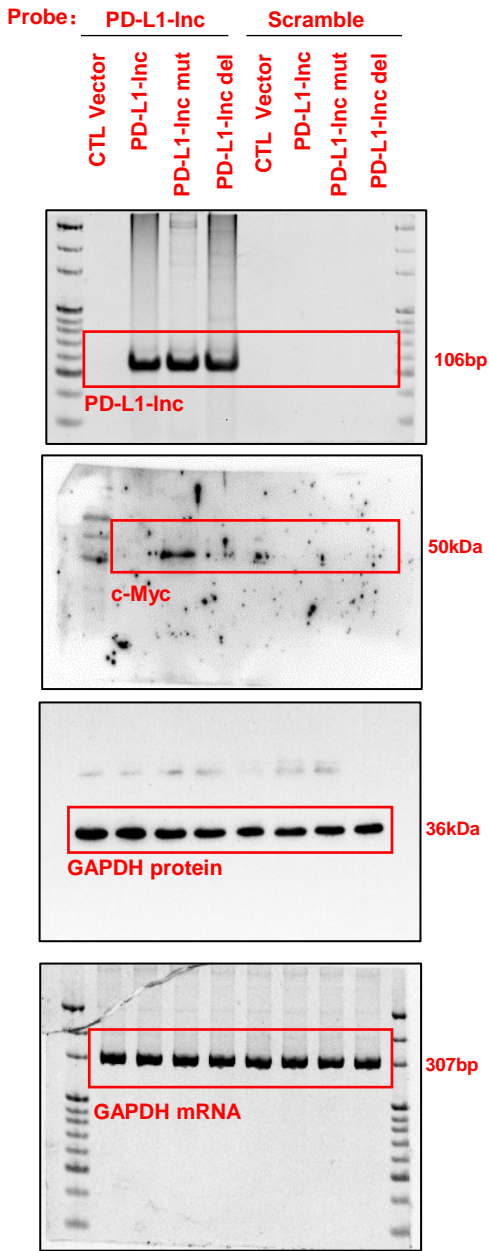


Figure 7D

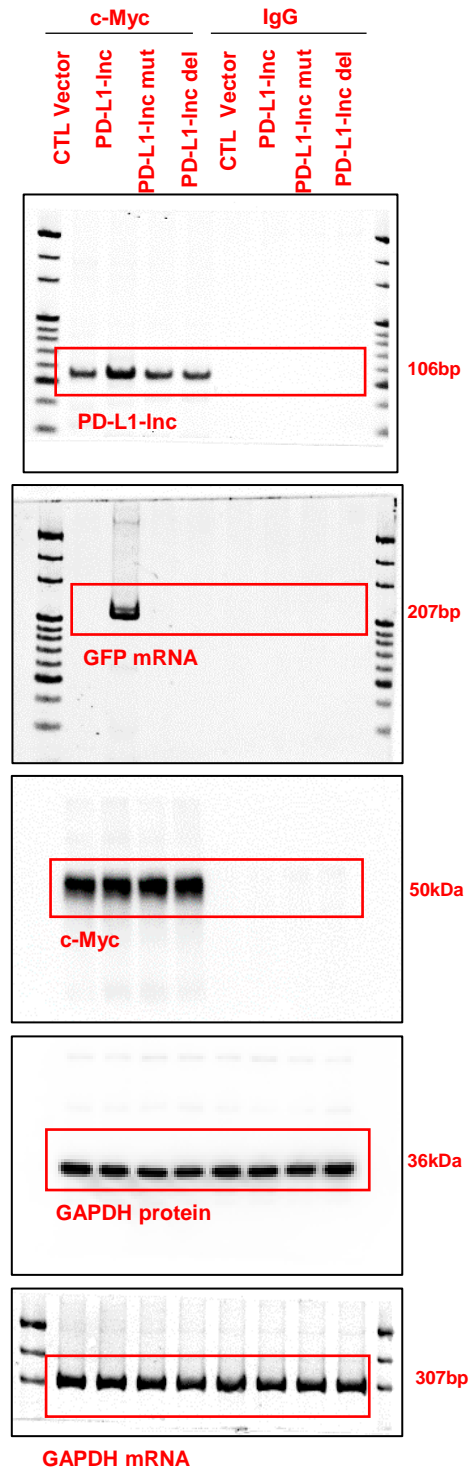


Figure 7E

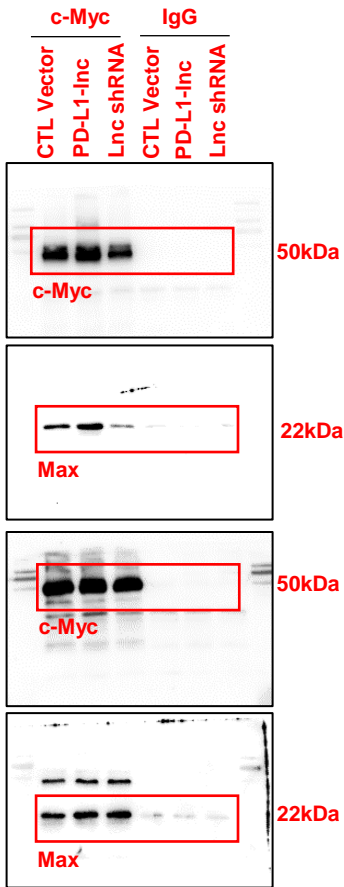


Figure 7G

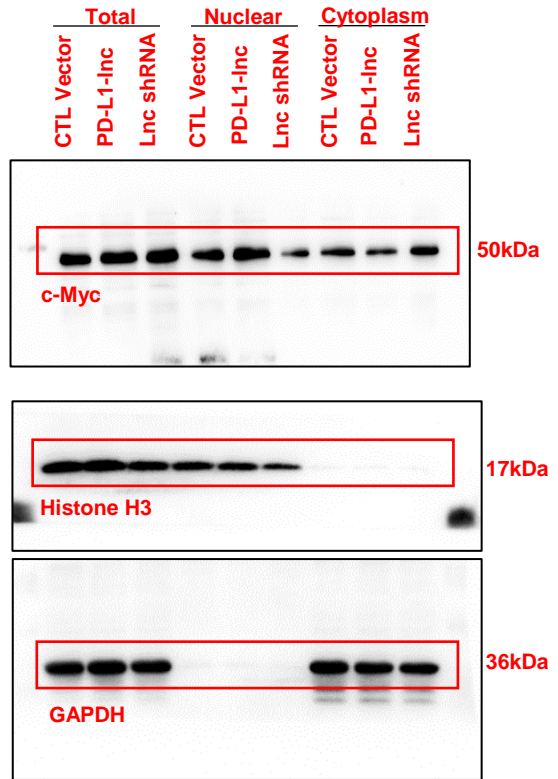


Fig.S4C

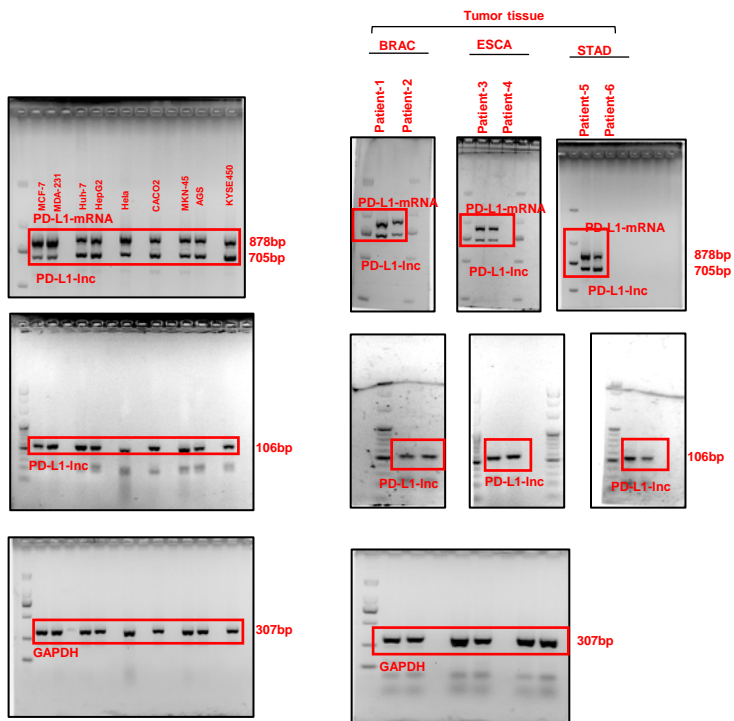
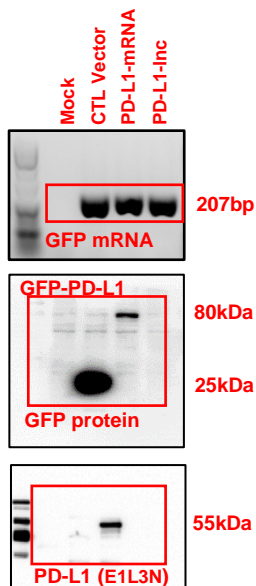


Fig.S5A**PD-L1 (E1L3N)**

Catalog Number:#13684 (CST)

Specificity/Sensitivity: PD-L1 (E1L3N®) XP® Rabbit

mAb recognizes endogenous levels of total PD-L1 protein.

Source/Purification: Monoclonal antibody is produced by immunizing animals with a synthetic peptide corresponding to residues near the carboxy terminus of human PD-L1 protein.

PD-L1 (2B11D11)

Catalog Number:66248-1-Ig (Proteintech)

CloneNo.:

2B11D11

Immunogen:

PD-L1/CD274 fusion protein Ag12443

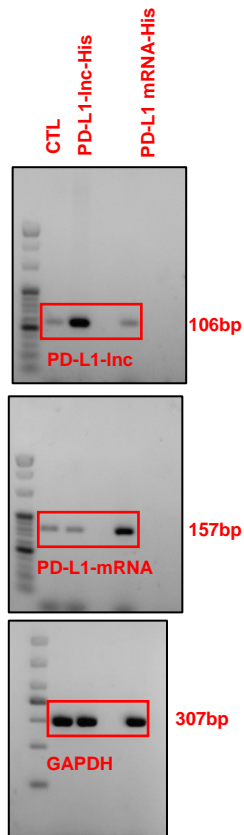
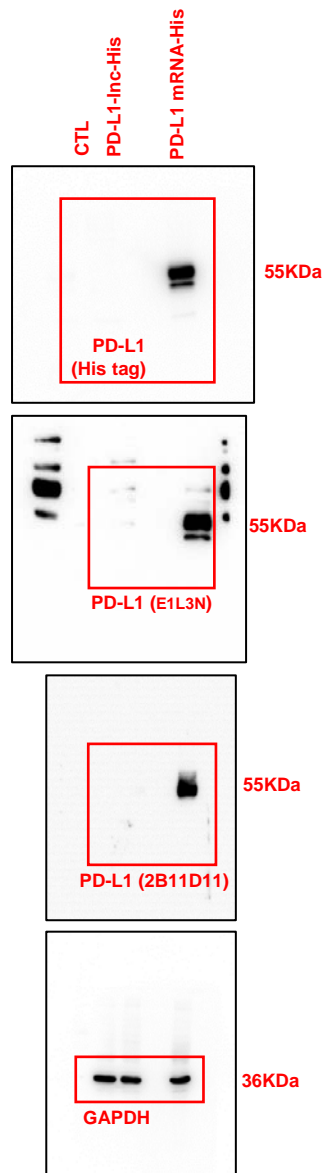
Fig.S5C**Fig.S5D**

Fig. S6A

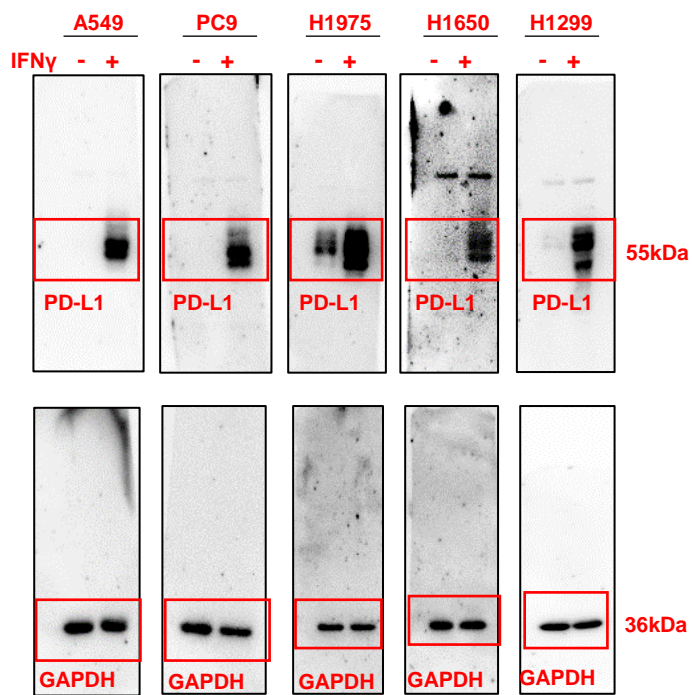


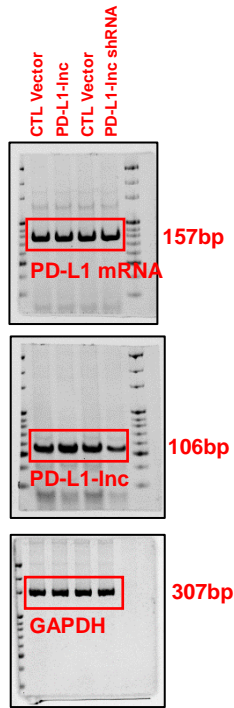
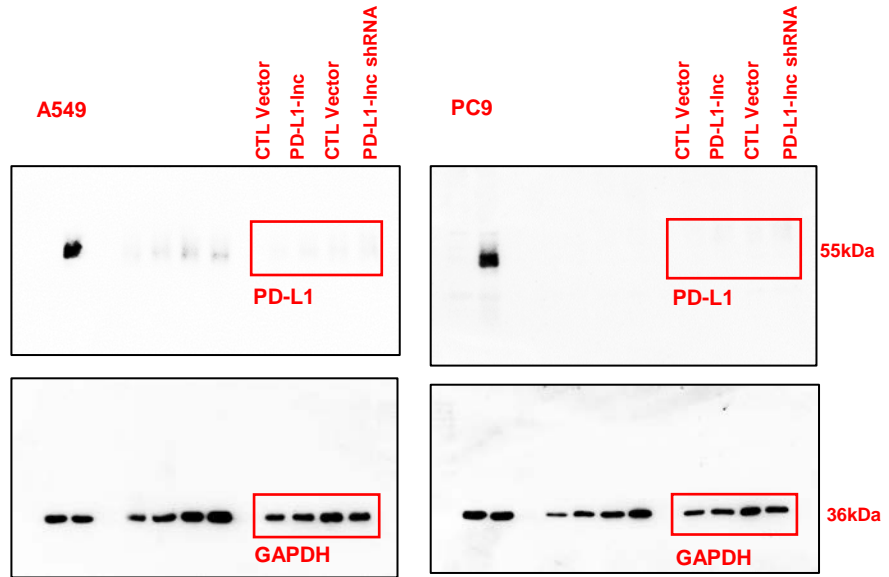
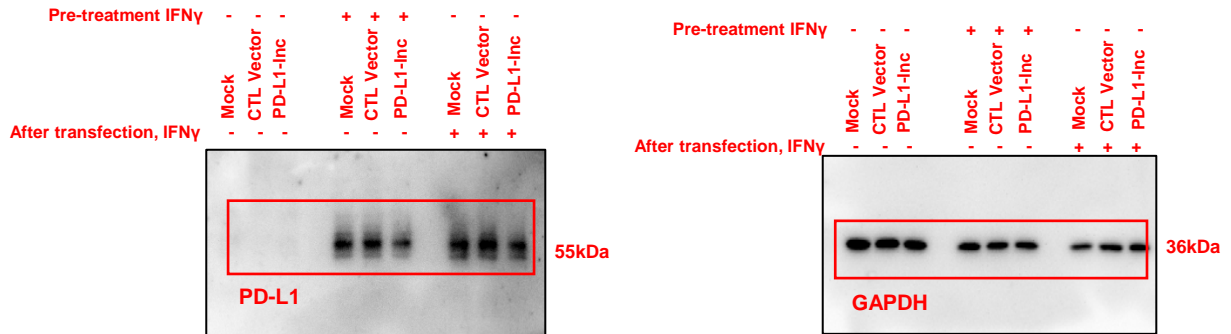
Fig. S7E**Fig. S7F****Fig. S7J**

Fig. S9B

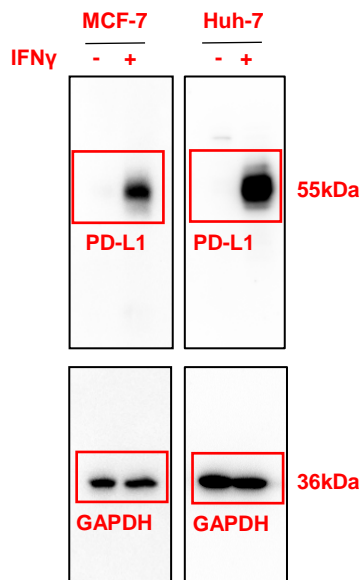


Fig. S9C

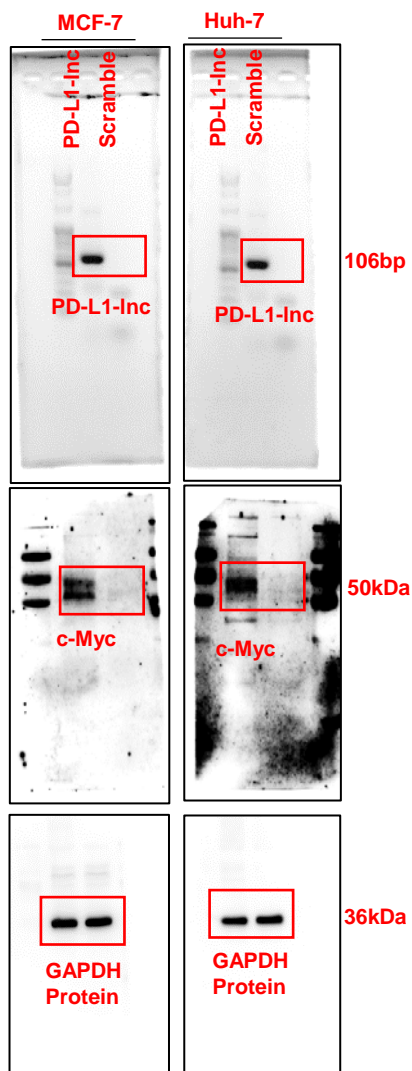


Fig. S9D

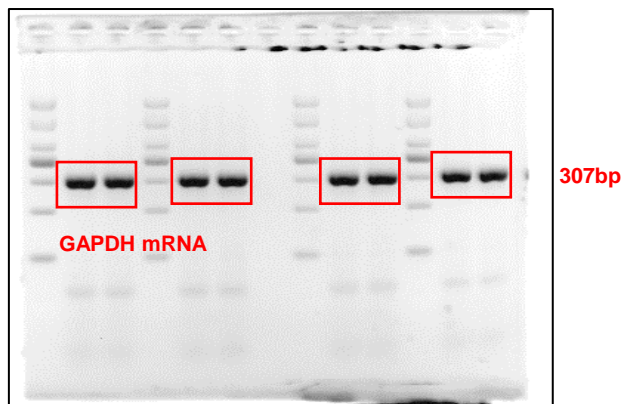
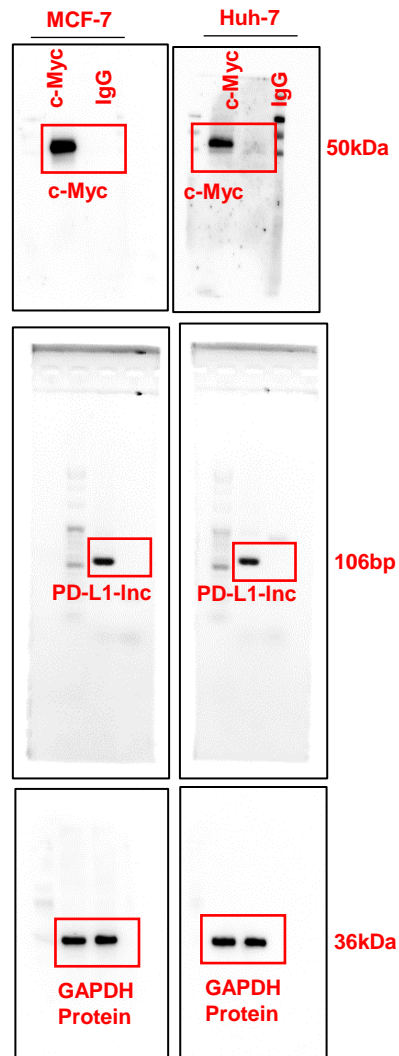


Fig. S11A

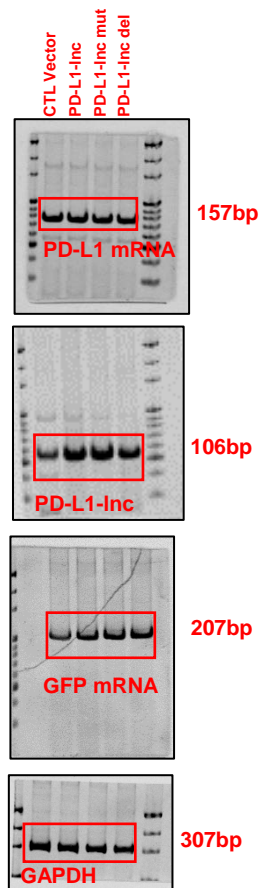


Fig. S11B

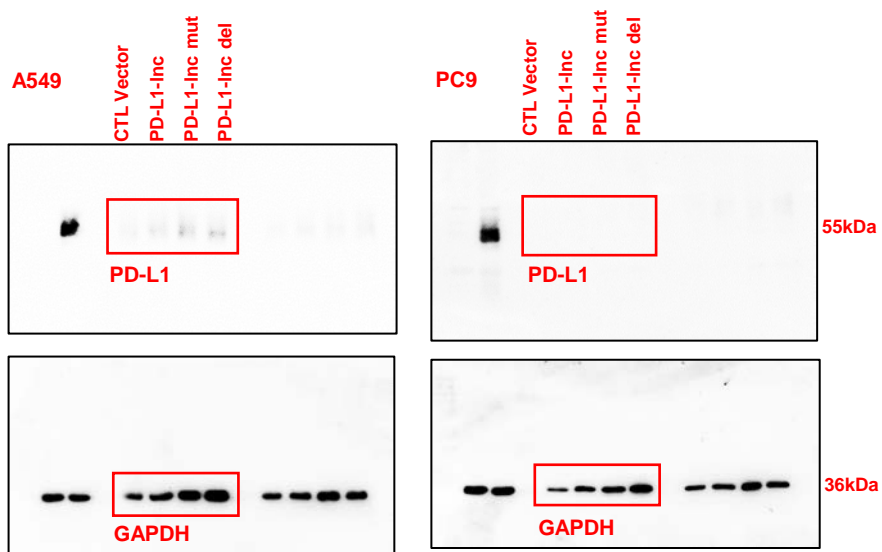


Figure S12A

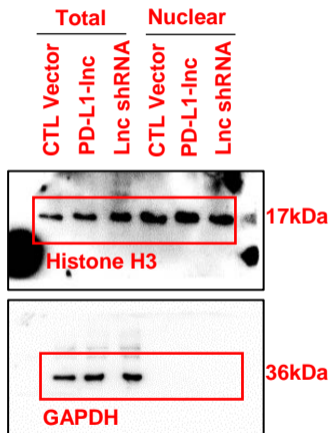


Figure S12B

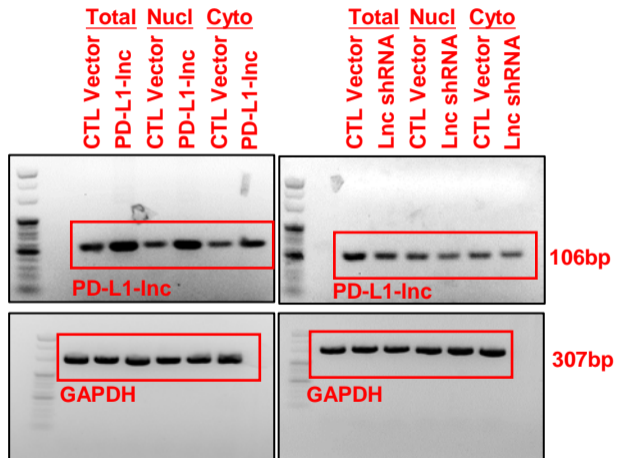


Fig.S13A

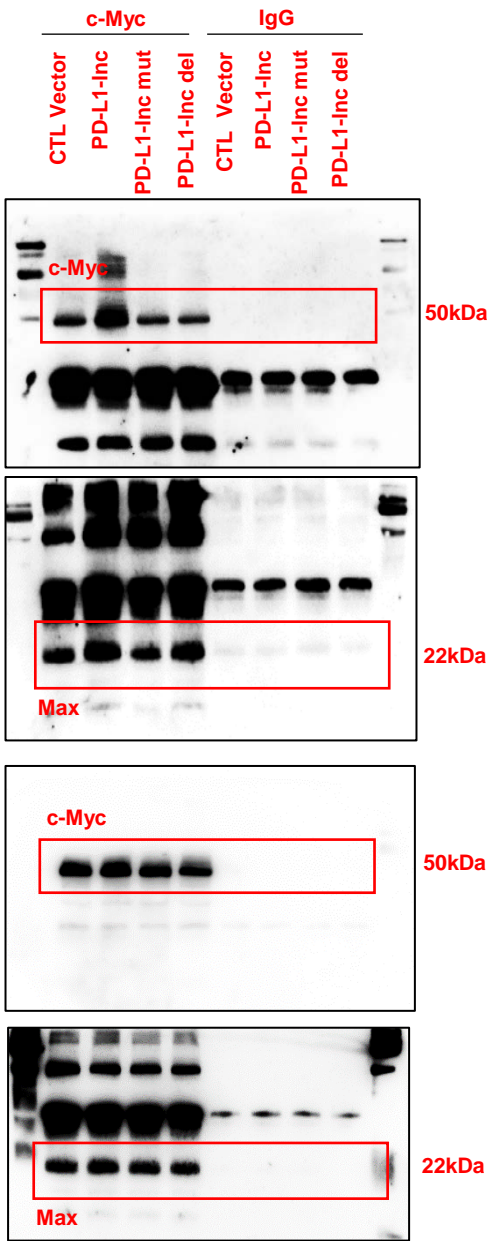


Fig.S13C

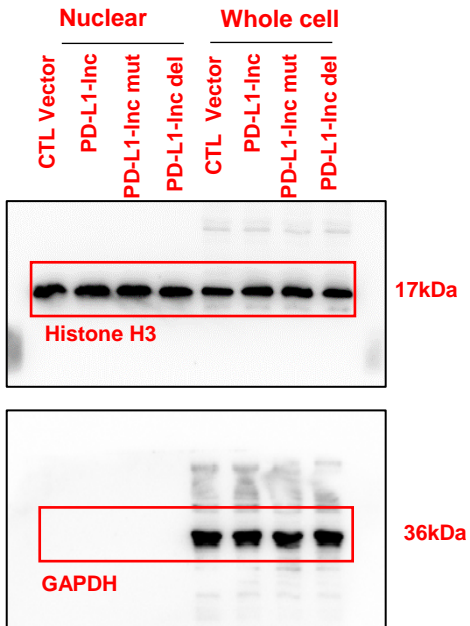
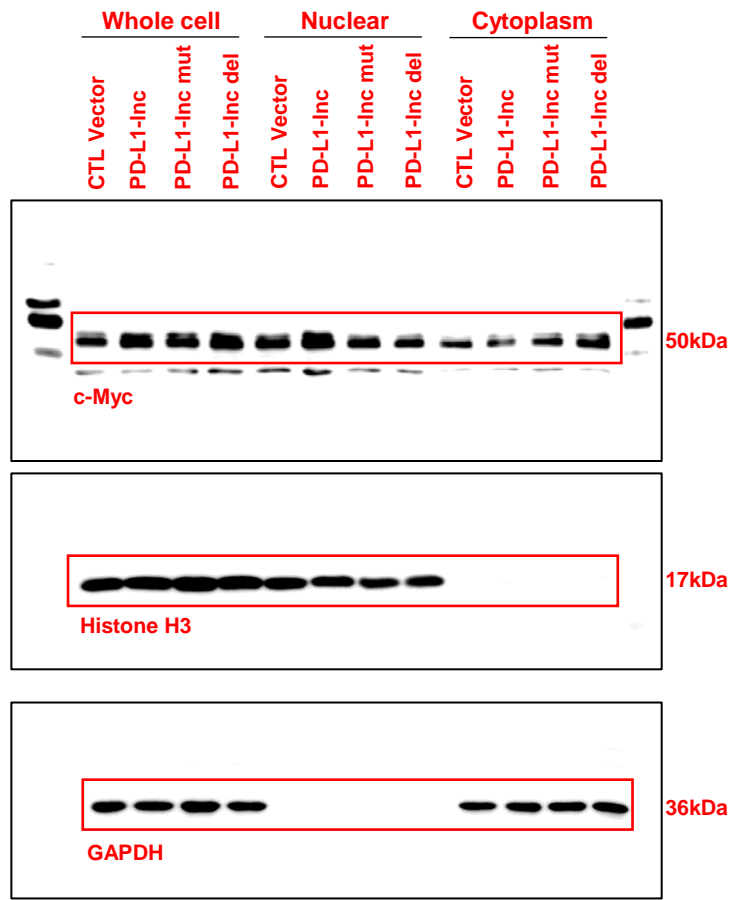


Fig. S14A

A549

Scramble RNA
c-Myc siRNA-1
c-Myc siRNA-2
c-Myc siRNA-3

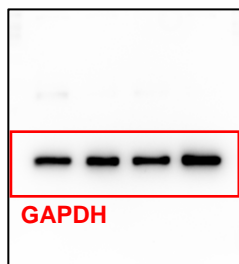
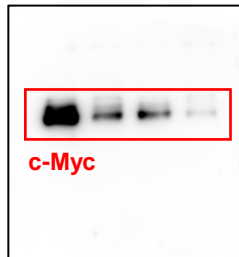


Fig. S14B

PC9

Scramble RNA
c-Myc siRNA-1
c-Myc siRNA-2
c-Myc siRNA-3

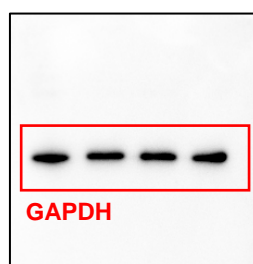
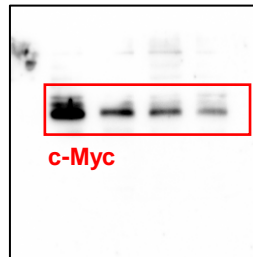


Fig. S15B

