

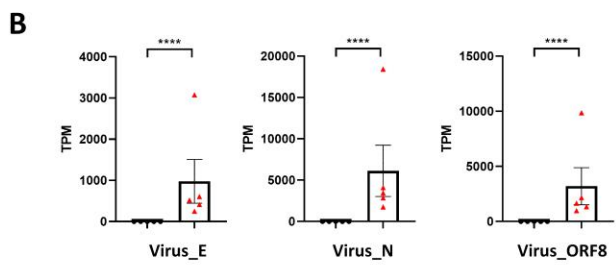
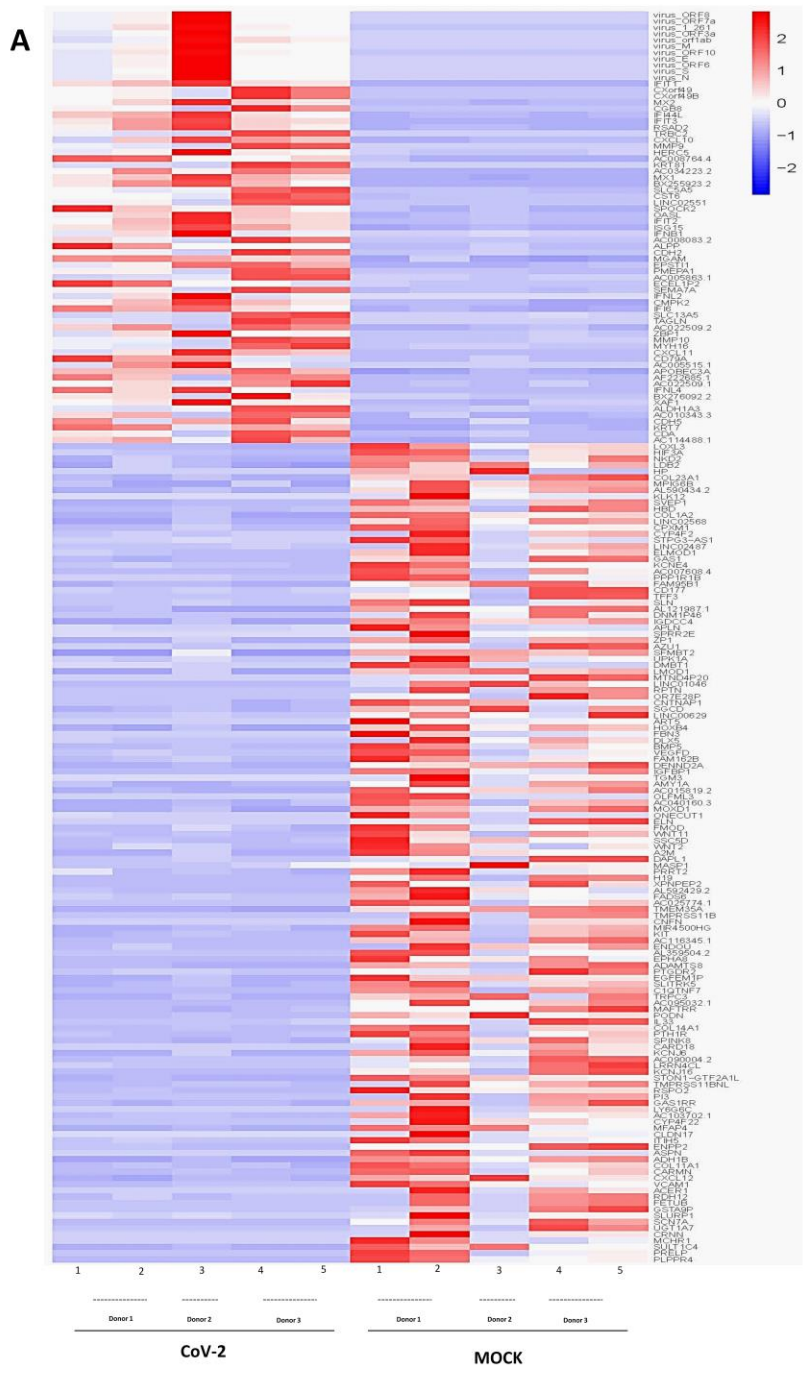
**Cell Reports, Volume 35**

**Supplemental information**

**SARS-CoV-2 infection of primary  
human lung epithelium for COVID-19  
modeling and drug discovery**

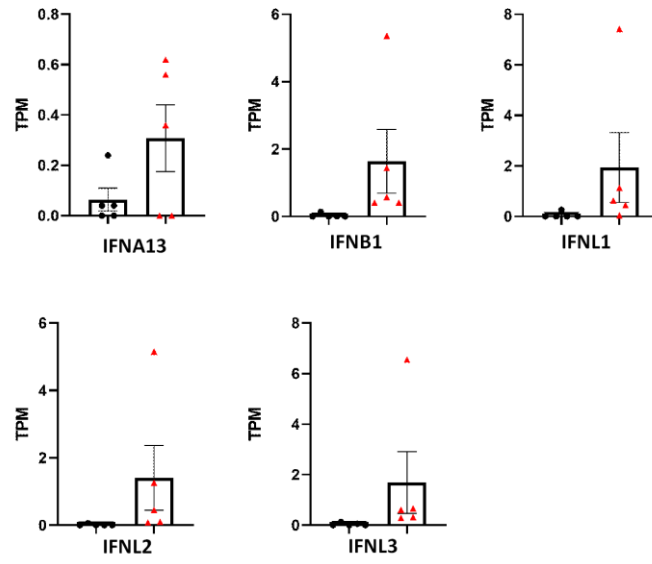
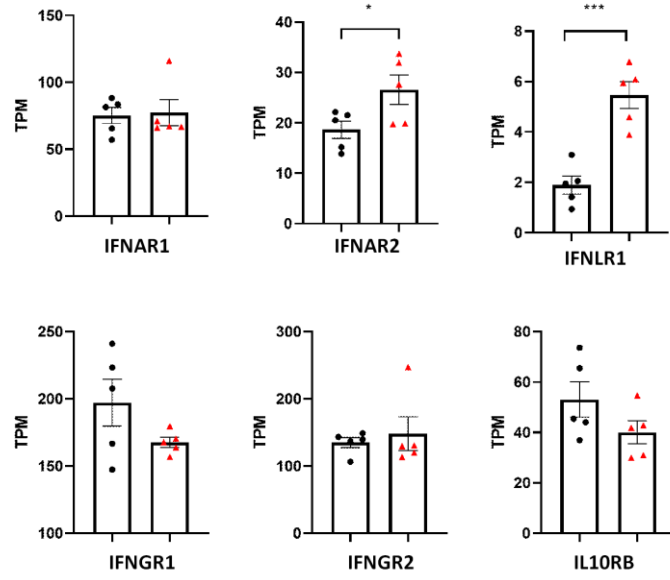
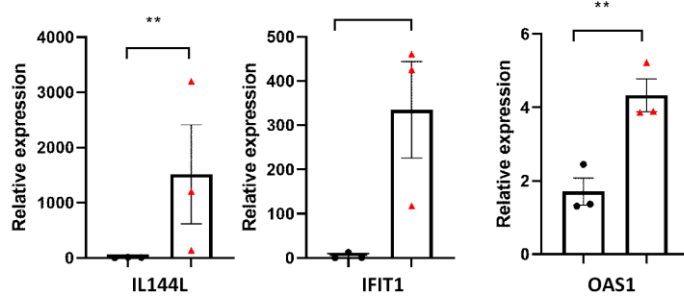
**Apoorva Mulay, Bindu Konda, Gustavo Garcia Jr., Changfu Yao, Stephen Beil, Jaquelyn M. Villalba, Colin Koziol, Chandani Sen, Arunima Purkayastha, Jay. K. Kolls, Derek A. Pociask, Patrizia Pessina, Julio Sainz de Aja, Carolina Garcia-de-Alba, Carla F. Kim, Brigitte Gomperts, Vaithilingaraja Arumugaswami, and Barry R. Stripp**

## Supplemental files



1  
2

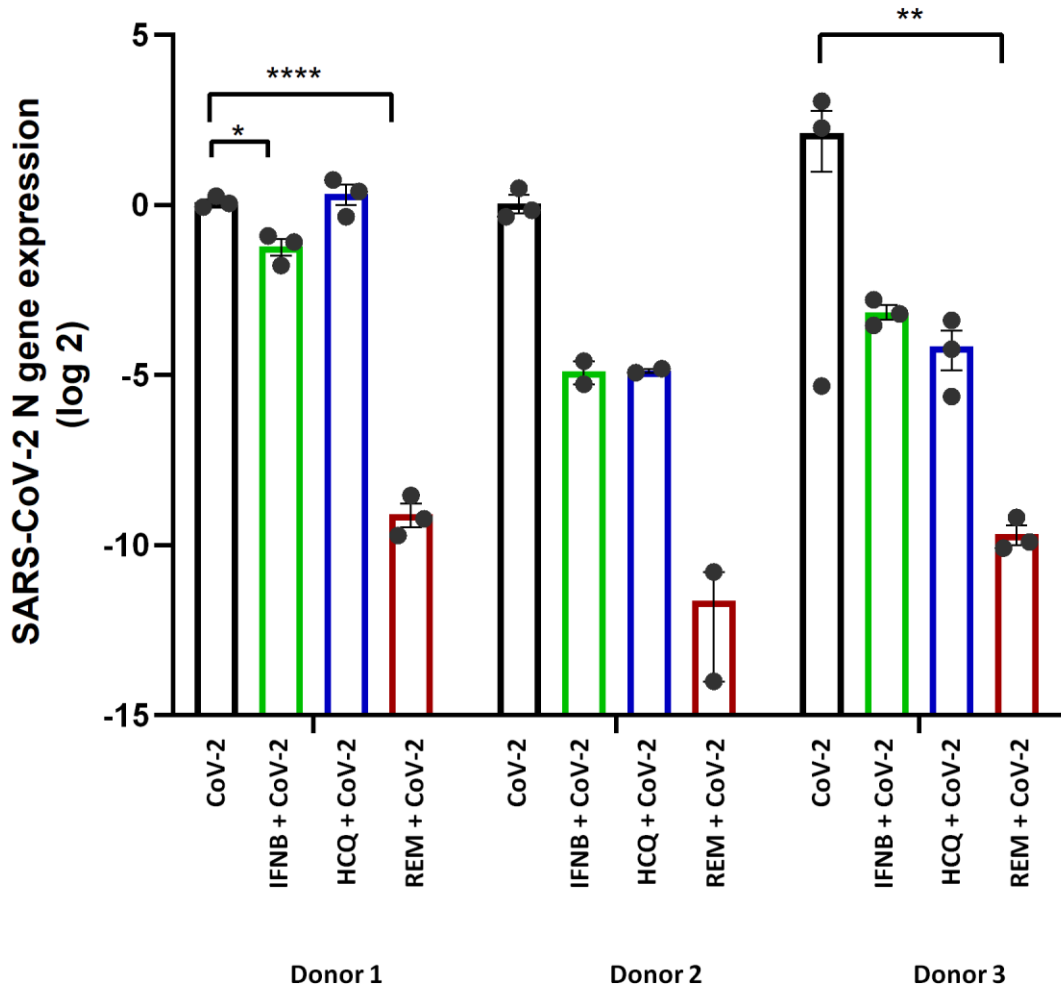
**Fig. S1. Differential expression of genes between SARS-CoV-2 and MOCK infected samples, Related to Figure 3**

**A****B****C**

1  
2

**Fig. S2. SARS-CoV-2 induces an interferon proinflammatory response in AT2 cells, Related to Figure 3.**

1  
2



3

4

Fig. S3. Effect of drugs on alveolar cultures from individual biological replicates, Related to Figure 4.

Gene	Forward primer	Reverse primer
2019-nCoV_N1	GAC CCC AAA ATC AGC GAA AT	TCT GGT TAC TGC CAG TTG AAT CTG
GAPDH	CCA CCT TTG ACG CTG GG	CAT ACC AGG AAA TGA GCT TGA CA
IFI44L_FWD	TGA CTT CTC AAA GCC GGG TC	AAA AAT CAT CTG CAG CCC GC
IFIT1_FWD	CCT CAG TCT TGC AGC CTC TC	GCA GTG CAG AAA GTG AGA CC
OAS1	TTC GGA CGG TCT TGG AAT TAG	GCT GCC TTC TCA GGT ACT TT

1  
2  
3  
4  
5

**Table S1. List of primer sequences used for RT-qPCRs, Related to STAR methods section ‘Real Time Quantitative PCR(RT-PCR)’**