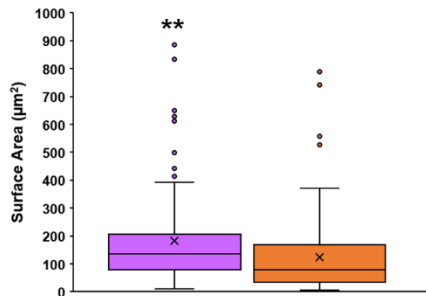
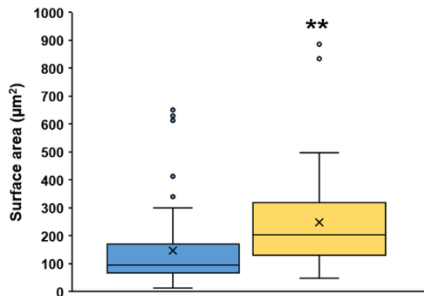


A**GV Surface Area:
With I-Pores vs Without I-Pores**

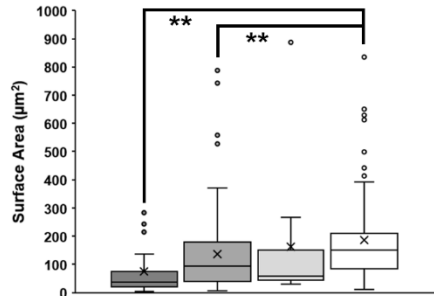
■ GVs with I-pores (n = 90)
■ GVs without I-pores (n = 90)

**B****GV Surface Area:
GVs with Single I-Pore vs. Multiple I-pores**

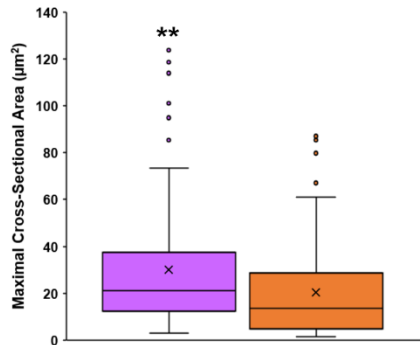
■ GVs with a single I-pore (n = 57)
■ GVs with multiple I-pores (n = 33)

**C****GV Surface Area:
Types I-IV**

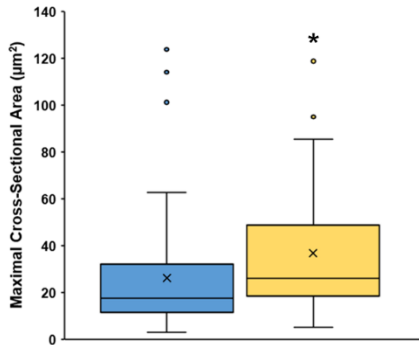
■ Type I (n = 19) ■ Type II (n = 71)
□ Type III (n = 11) □ Type IV (n = 79)

**D****GV Maximal Cross-Sectional Area:
with I-Pores vs. Without I-Pores**

■ GVs with I-pores (n = 90)
■ GVs without I-pores (n = 90)

**E****GV Maximal Cross-Sectional Area:
GVs with Single I-Pores vs. Multiple I-Pores**

■ GVs with a single I-pore (n = 57)
■ GVs with multiple I-pores (n = 33)

**F****GV Maximal Cross-Sectional Area:
Types I-IV**

■ Type I (n = 19) ■ Type II (n = 71)
□ Type III (n = 11) □ Type IV (n = 79)

