

Supplementary Material

Myorelaxation, respiratory depression and electrocardiographic changes caused by the administration of extract of açai (*Euterpe oleracea* Mart.) stone in rats.

Nilton Akio Muto^a, Moisés Hamoy^b, David Cristian Rodrigues Lucas^a, Bruno Brito Teixeira^a, Adrielle Felicia Santos Almeida^a, Thamires de Castro Navegantes^b, Vaniza Sheila de Sousa Ferreira de Sá^b, Brenda Pinto de Moraes^b, João Paulo do Vale Medeiros^b, Yasmin Amorim dos Santos^b, Cláudia Quintino da Rocha^c, Vanessa Joia de Mello^b, Hervé Rogez^{a,*}.

^aUFPA & Centre for Valorization of Amazonian Bioactive Compounds (CVACBA), Belém, Pará, Brazil

^bLaboratory of Pharmacology and Toxicology of Natural Products, ICB-UFPA

^cLaboratory of Chemistry of Natural Products, UFMA

Fig. S1: Mass spectrum of compound 1

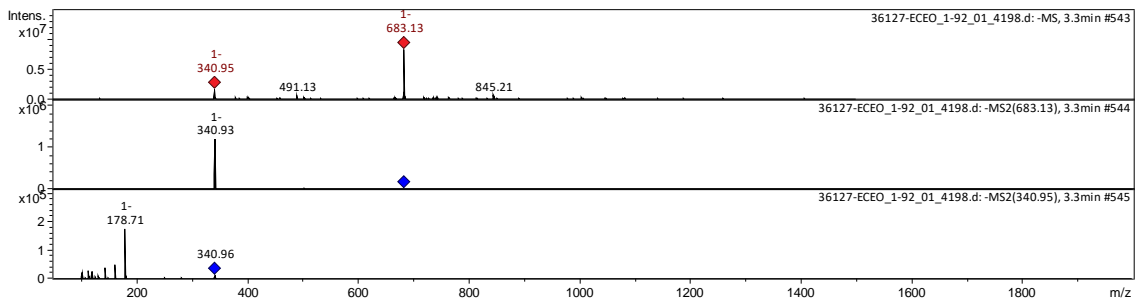


Fig. S2: Mass spectrum of compound 2

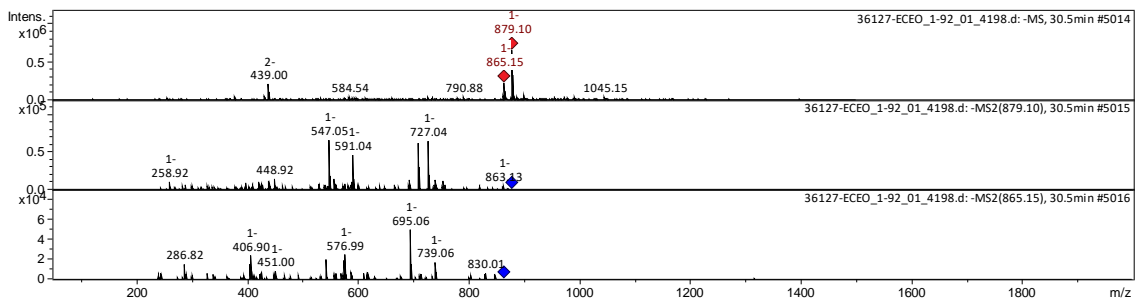


Fig. S3: Mass spectrum of compound 3

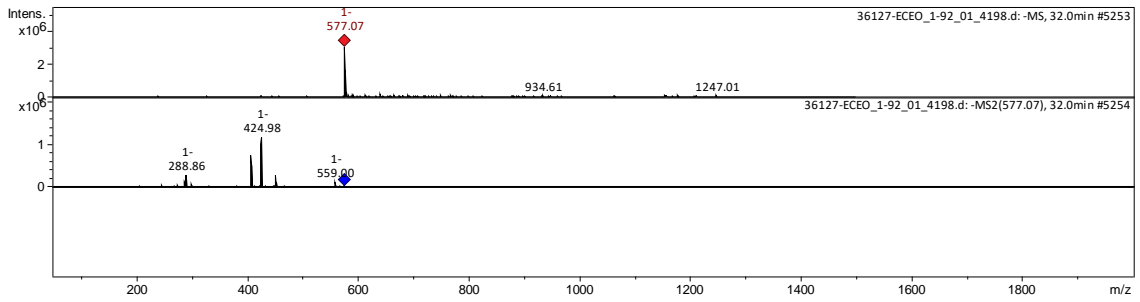


Fig. S4: Mass spectrum of compound 4

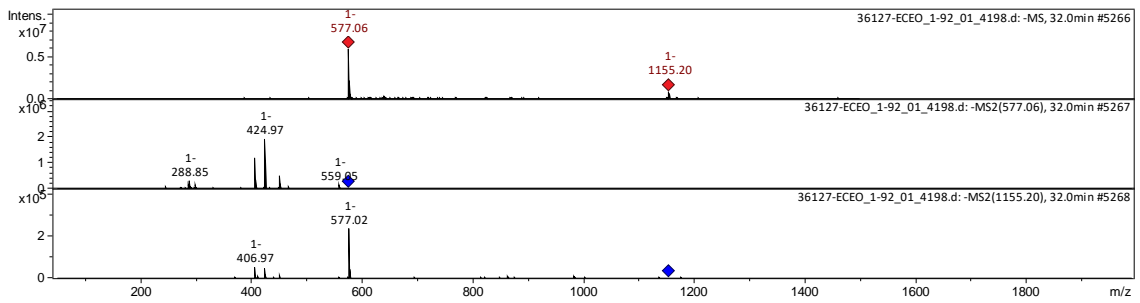


Fig. S5: Mass spectrum of compound 5

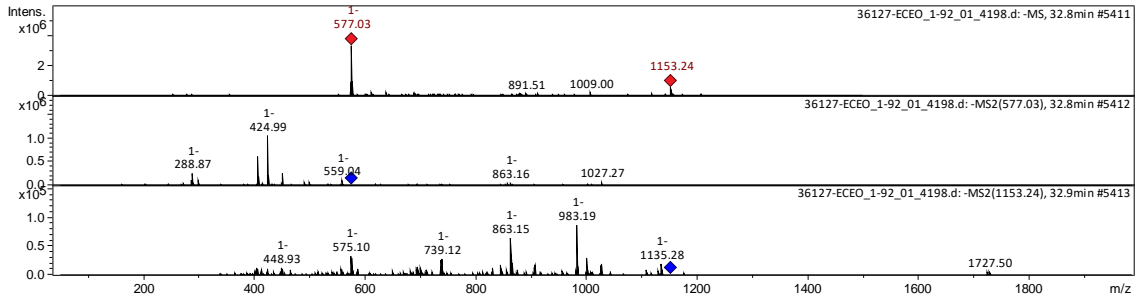


Fig. S6: Mass spectrum of compound 6

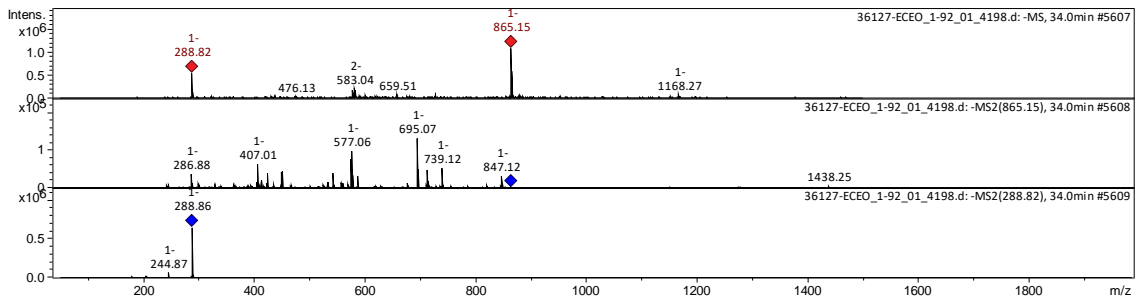


Fig. S7: Mass spectrum of compound 7

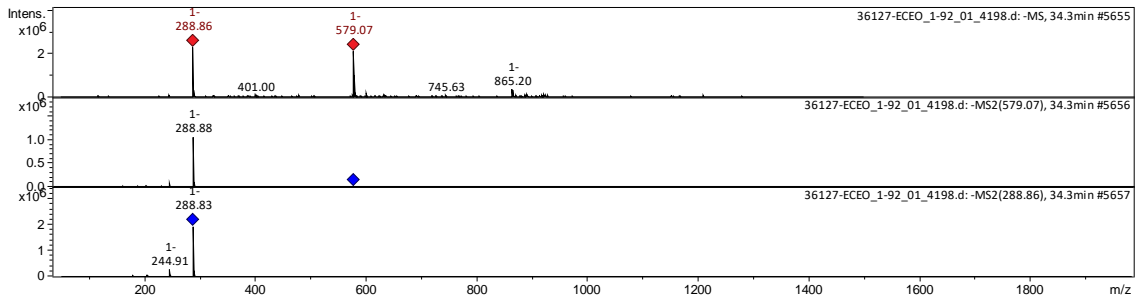


Fig. S8: Mass spectrum of compound 8

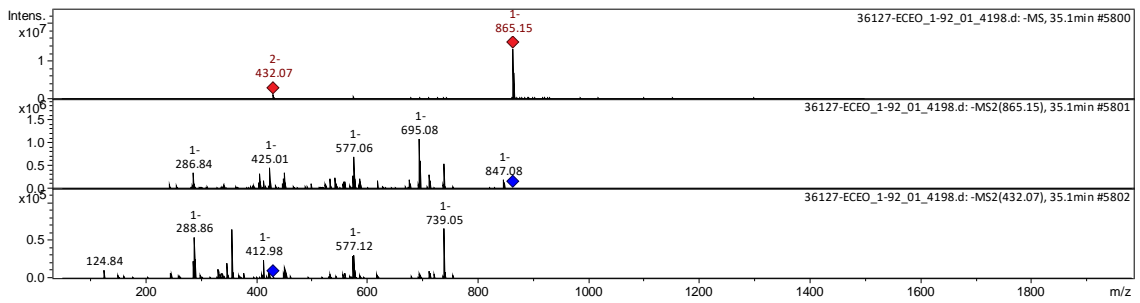


Fig. S9: Mass spectrum of compound 9

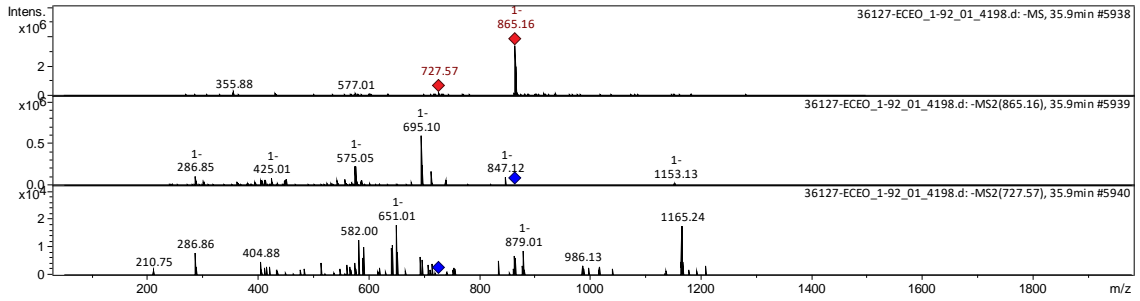


Fig. S10: Mass spectrum of compound 10

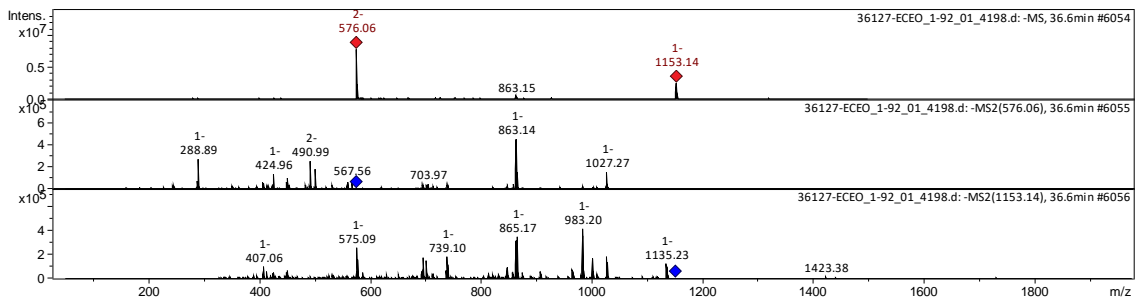


Fig. S11: Mass spectrum of compound 11

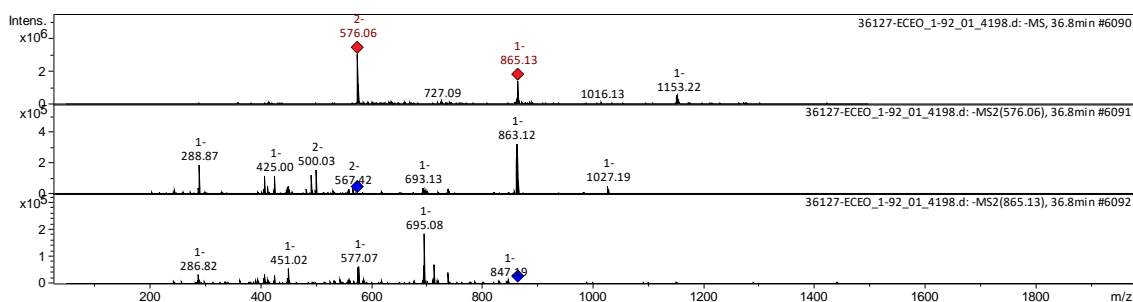


Fig. S12: Mass spectrum of compound 12

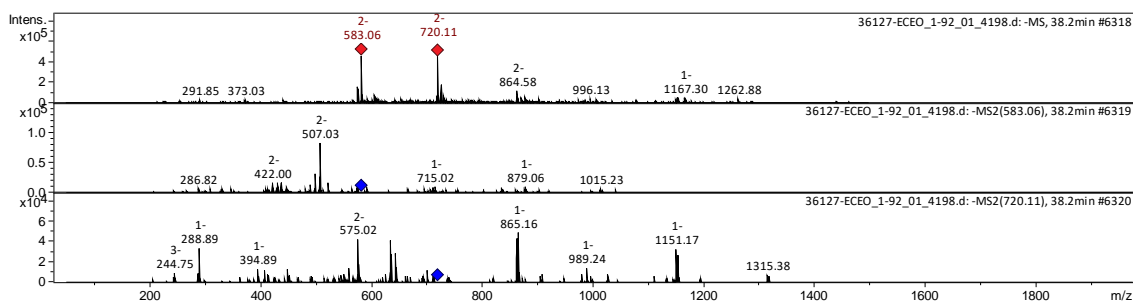


Fig. S13: Mass spectrum of compound 13

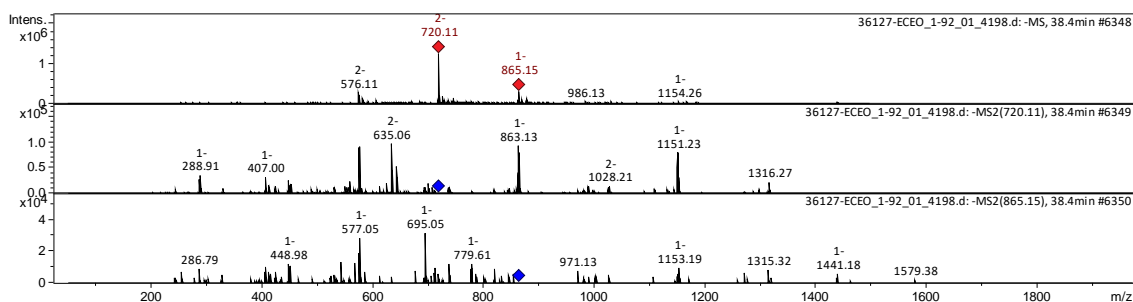


Fig. S14: Mass spectrum of compound 14

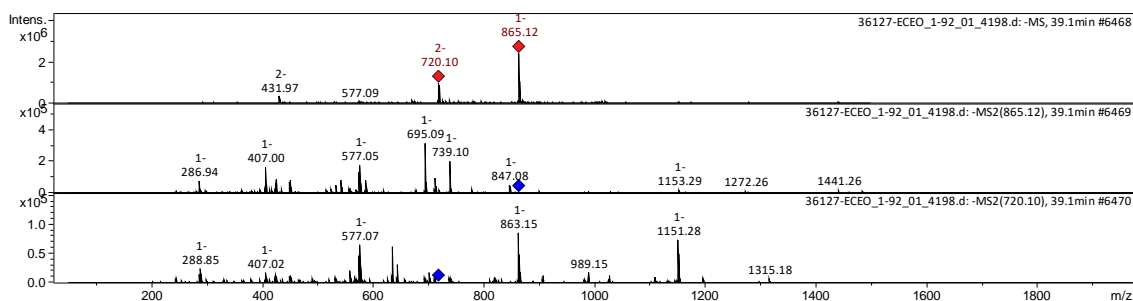


Fig. S15: Mass spectrum of compound 15

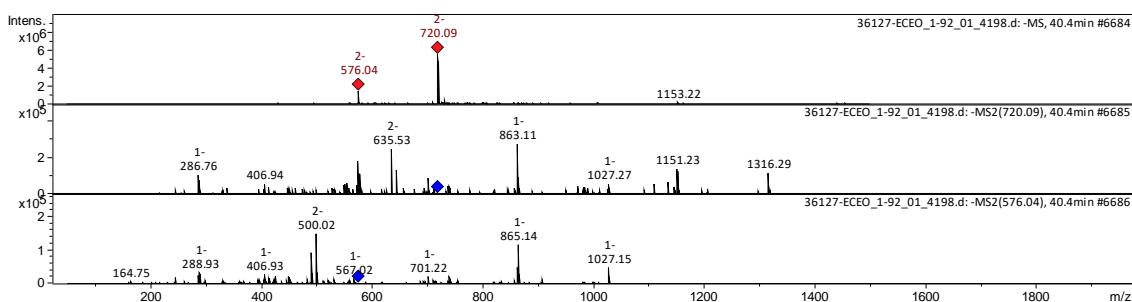


Fig. S16: Mass spectrum of compound 16

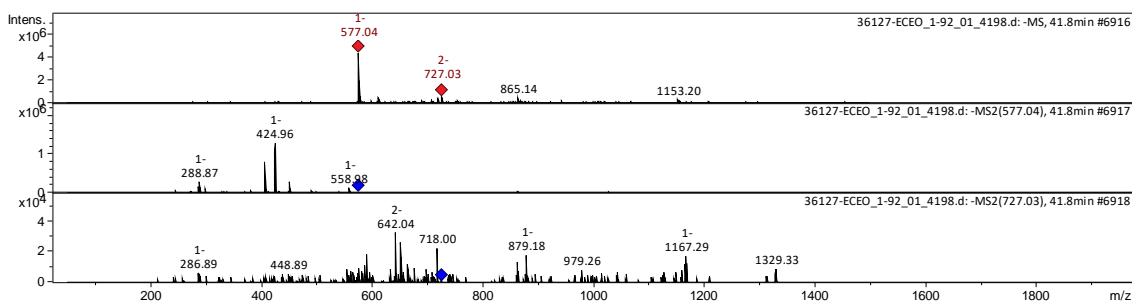


Fig. S17: Mass spectrum of compound 17

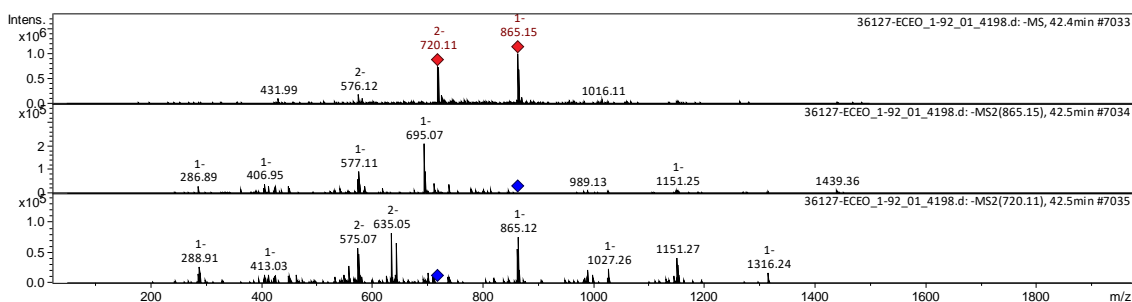


Fig. S18: Mass spectrum of compound 18

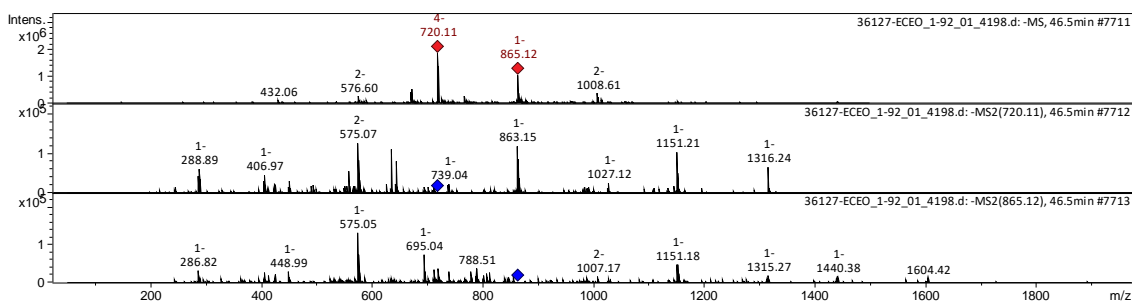


Fig. S19: Mass spectrum of compound 19

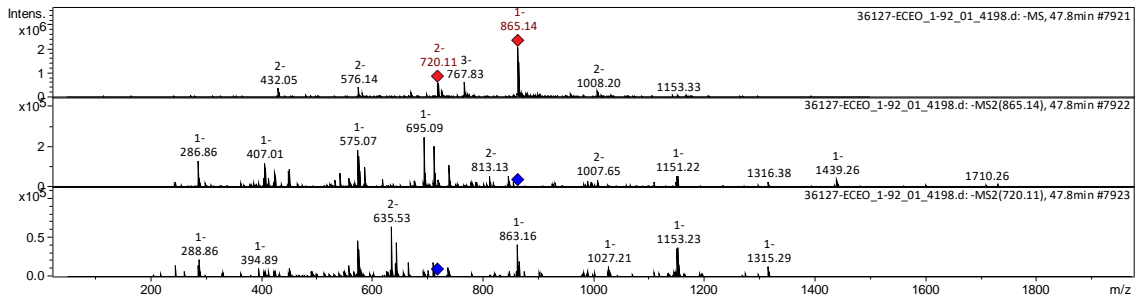


Fig. S20: Mass spectrum of compound 20

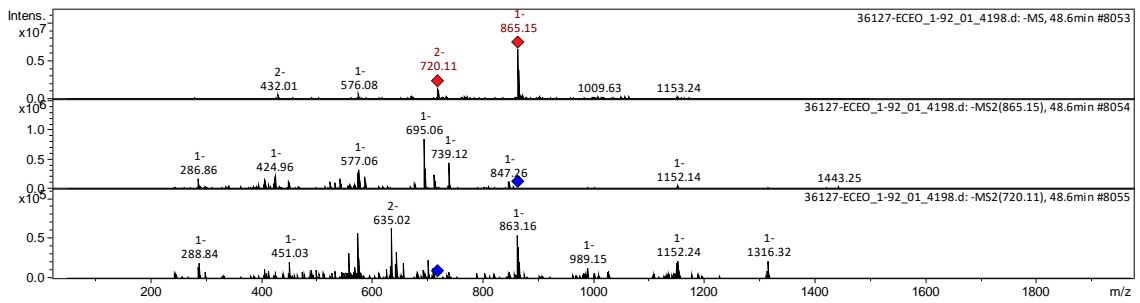


Fig. S21: Mass spectrum of compound 21

