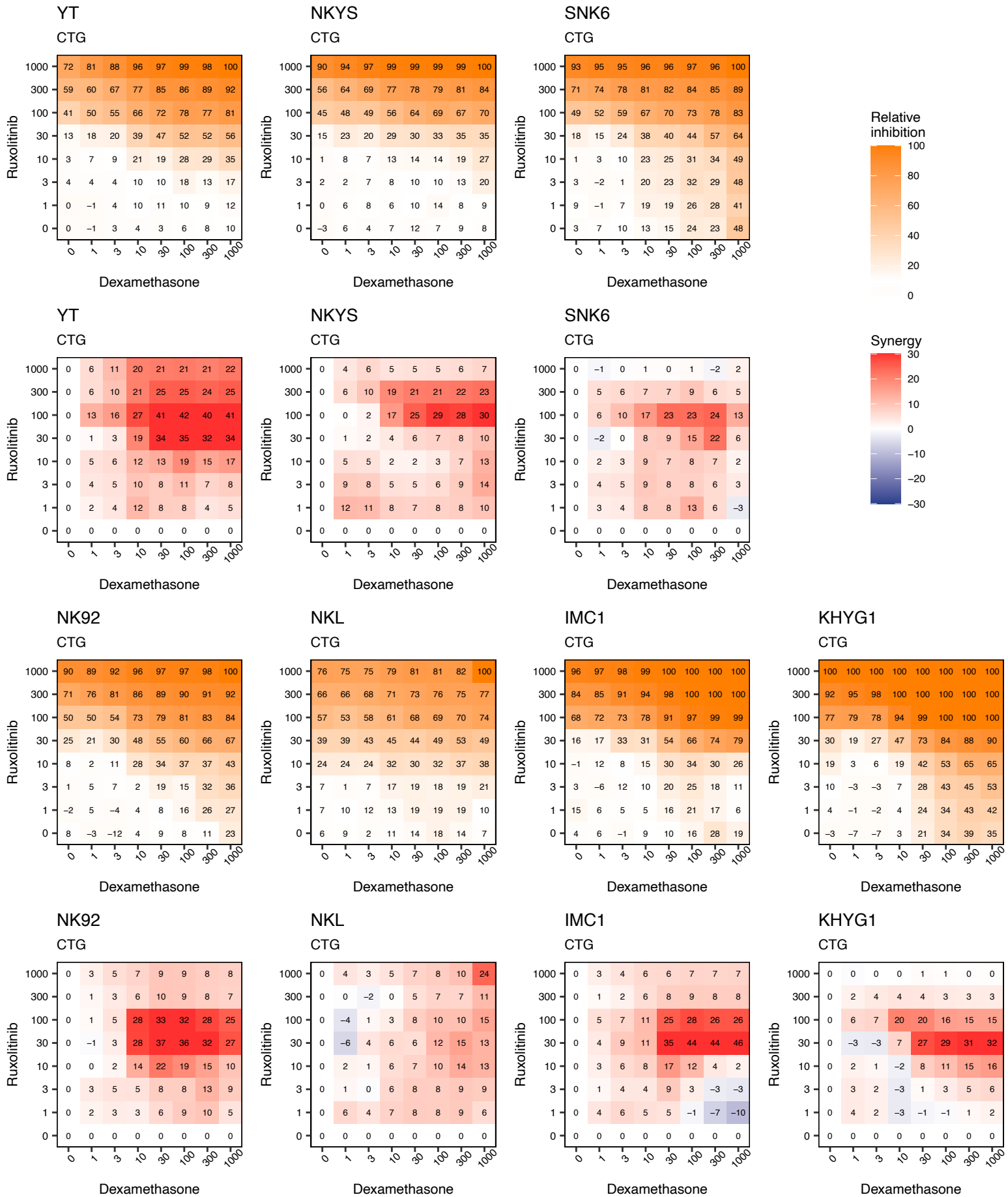


## Supplemental Data 2

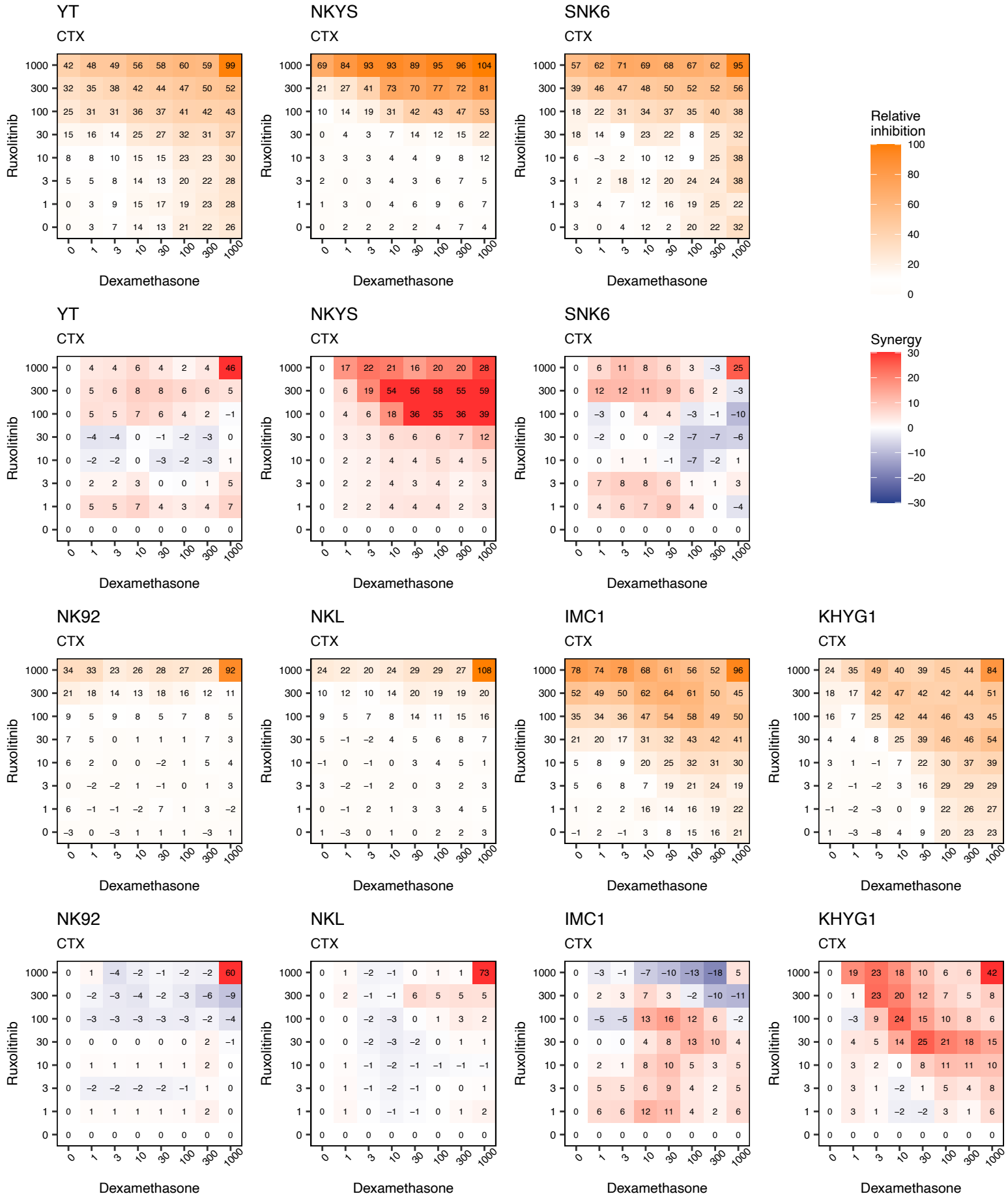
Figures of relative inhibition and synergy (ZIP) for ruxolitinib combinations in seven cell lines (pages 1-19) and healthy peripheral blood mononuclear cells (PBMCs) from two individuals (pages 20-27). Indicated drug concentrations are given in nanomoles (nM). The drug combination responses were calculated based on ZIP model using SynergyFinder (<https://synergyfinder.fimm.fi/>)<sup>29-30</sup> and re-visualized in RStudio.

<b>Treatments in cell lines</b>	<b>Page</b>
Dexamethasone and ruxolitinib based on viability readout	2
Dexamethasone and ruxolitinib based on toxicity readout	3
Methylprednisolone and ruxolitinib based on viability readout	4
Methylprednisolone and ruxolitinib based on toxicity readout	5
S-63845 and ruxolitinib based on viability readout	6
S-63845 and ruxolitinib based on toxicity readout	7
Navitoclax and ruxolitinib based on viability readout	8
Navitoclax and ruxolitinib based on toxicity readout	9
Venetoclax and ruxolitinib based on viability readout	10
Venetoclax and ruxolitinib based on toxicity readout	11
Idasanutlin and ruxolitinib based on viability readout	12
Idasanutlin and ruxolitinib based on toxicity readout	13
Siremadlin (HDM-201) and ruxolitinib based on viability readout	14
Siremadlin (HDM-201) and ruxolitinib based on toxicity readout	15
Tipifarnib and ruxolitinib based on viability readout	16
Tipifarnib and ruxolitinib based on toxicity readout	17
Lonafarnib and ruxolitinib based on viability readout	18
Lonafarnib and ruxolitinib based on toxicity readout	19
<b>Treatments in healthy PBMCs</b>	
Dexamethasone and ruxolitinib based on viability readout	20
Dexamethasone and ruxolitinib based on toxicity readout	21
Tipifarnib and ruxolitinib based on viability readout	22
Tipifarnib and ruxolitinib based on toxicity readout	23
S-63845 and ruxolitinib based on viability readout	24
S-63845 and ruxolitinib based on toxicity readout	25
Idasanutlin and ruxolitinib based on viability readout	26
Idasanutlin and ruxolitinib based on toxicity readout	27

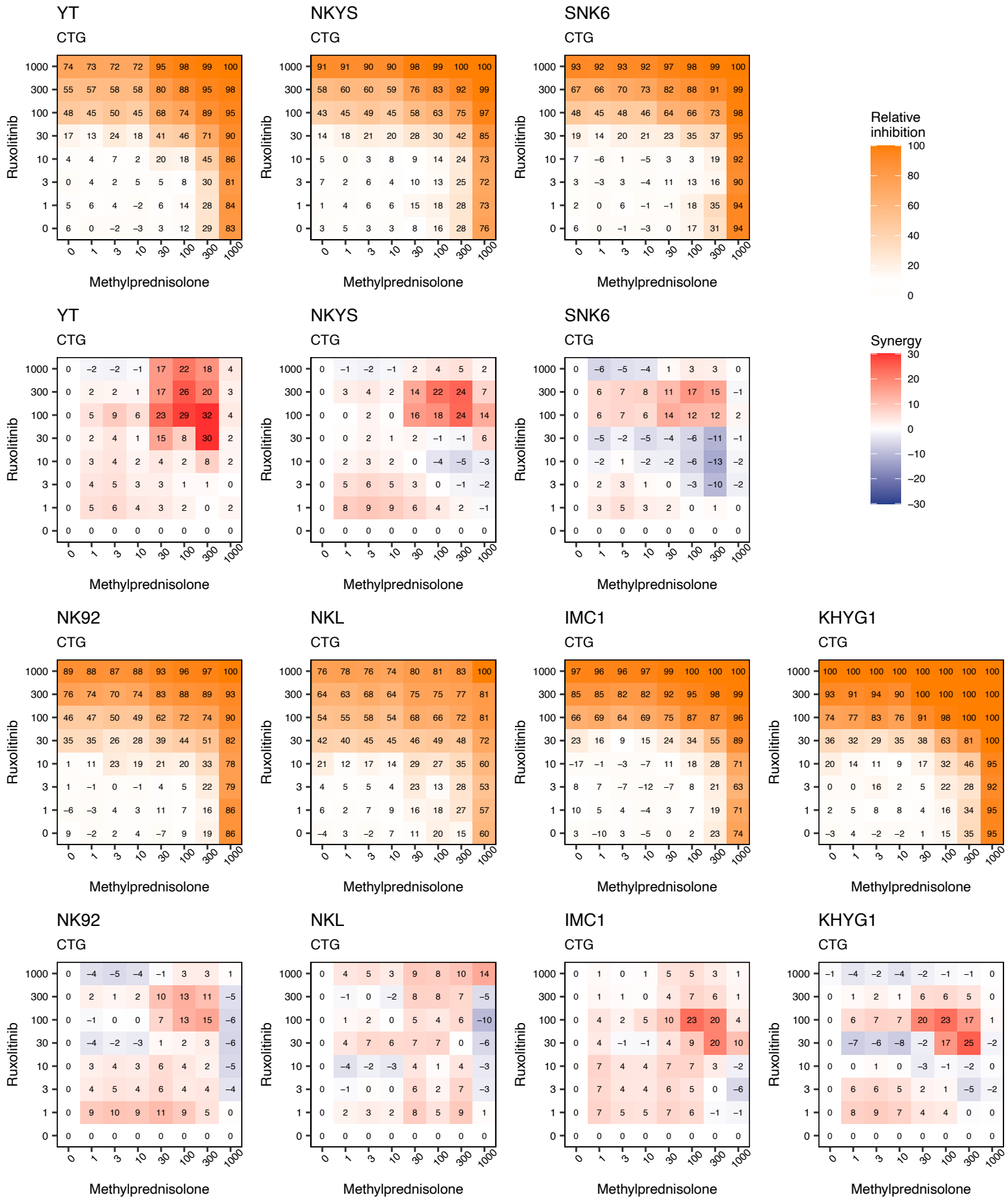
Cell lines: Relative inhibition (%) and synergy (ZIP) for dexamethasone and ruxolitinib based on viability readout



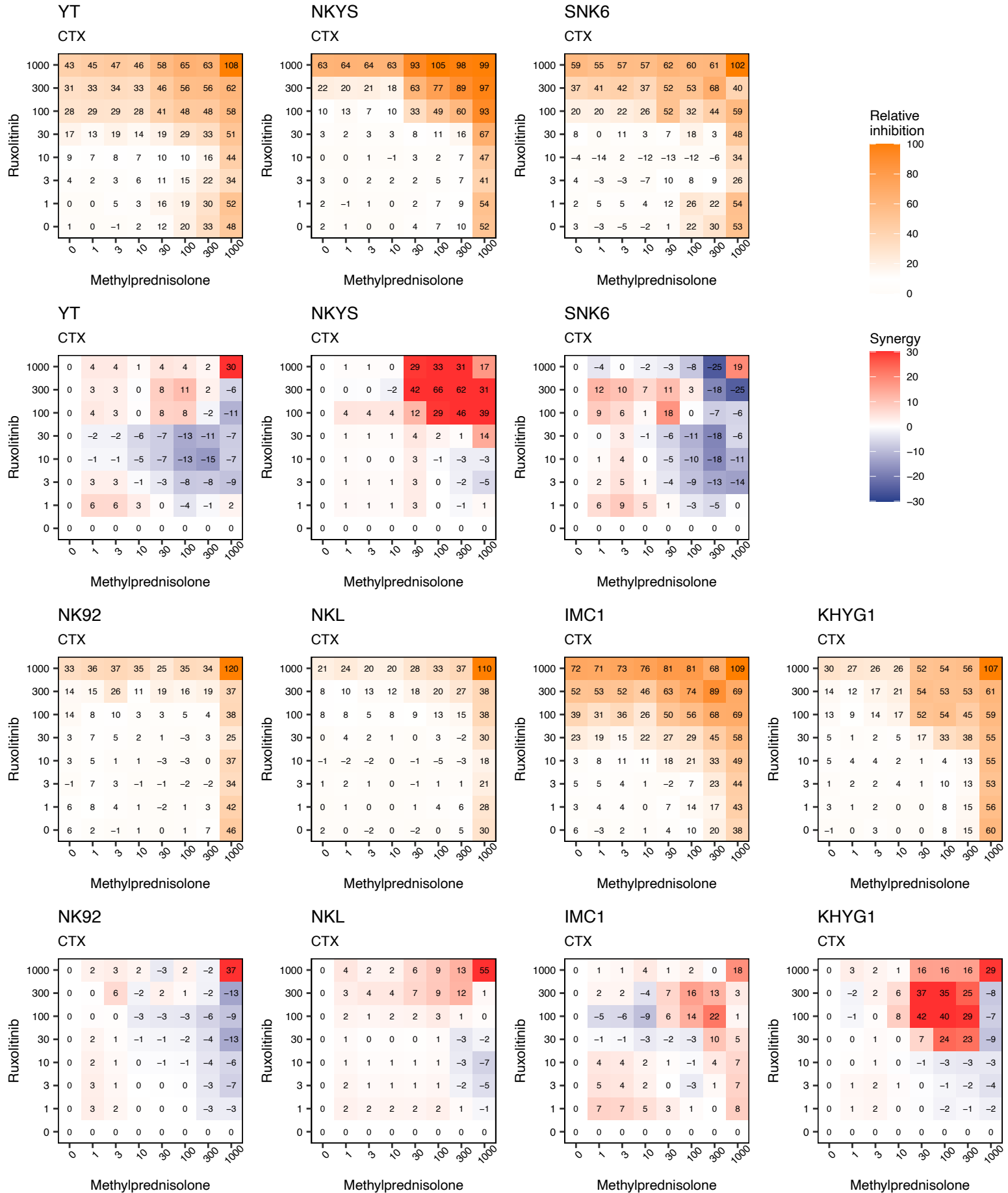
Cell lines: Relative inhibition (%) and synergy (ZIP) for dexamethasone and ruxolitinib based on toxicity readout



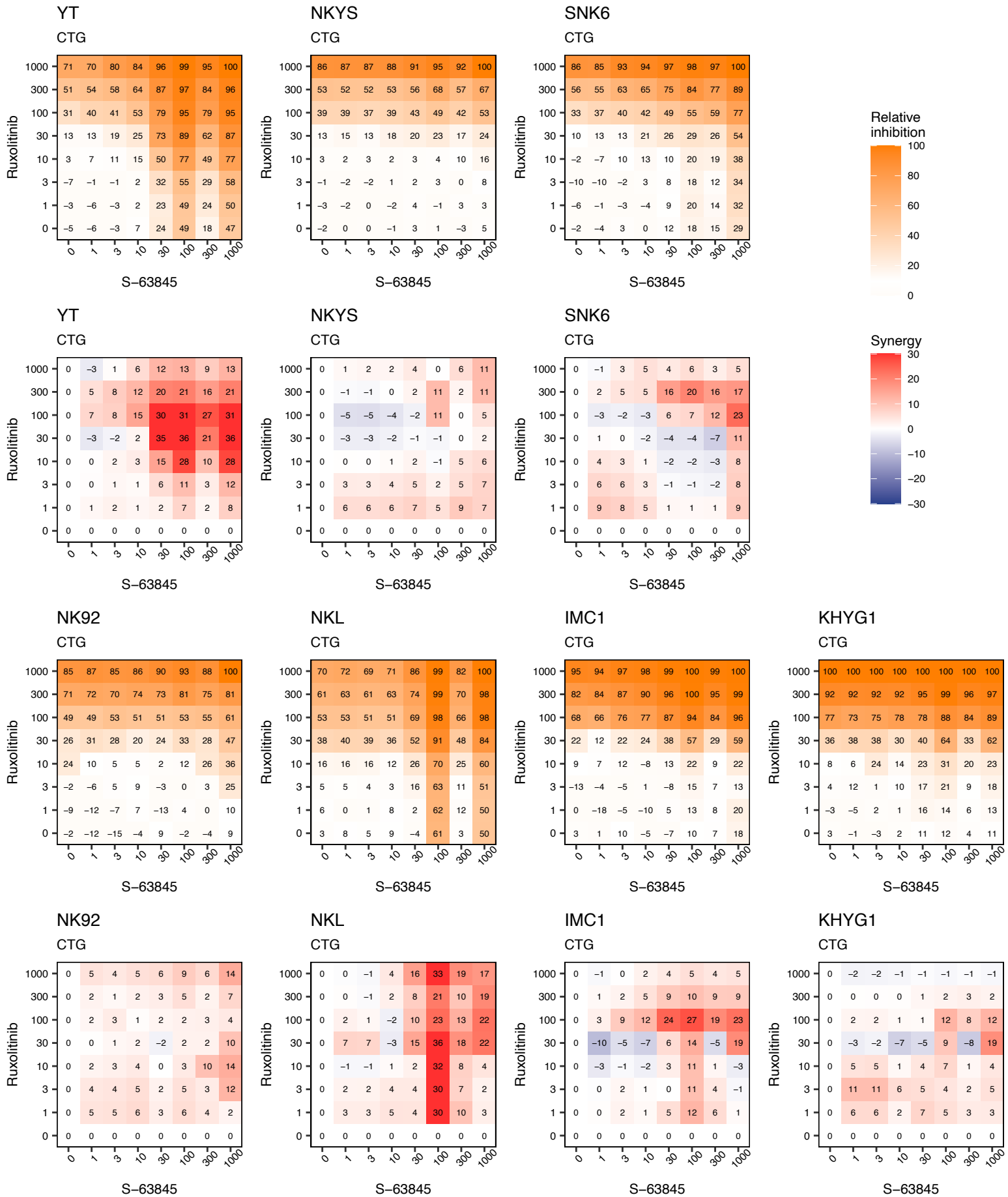
Cell lines: Relative inhibition (%) and synergy (ZIP) for methylprednisolone and ruxolitinib based on viability readout



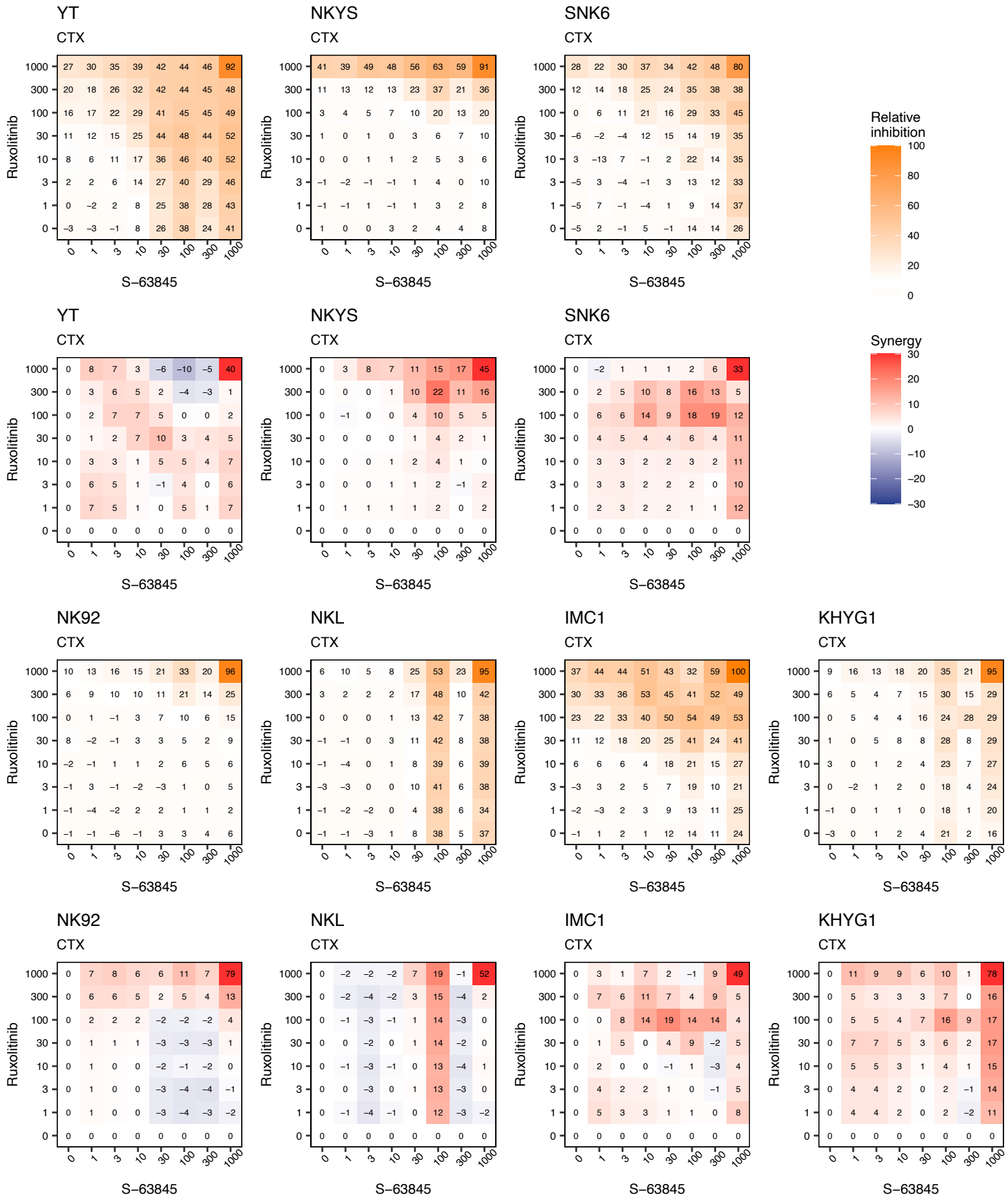
Cell lines: Relative inhibition (%) and synergy (ZIP) for methylprednisolone and ruxolitinib based on toxicity readout



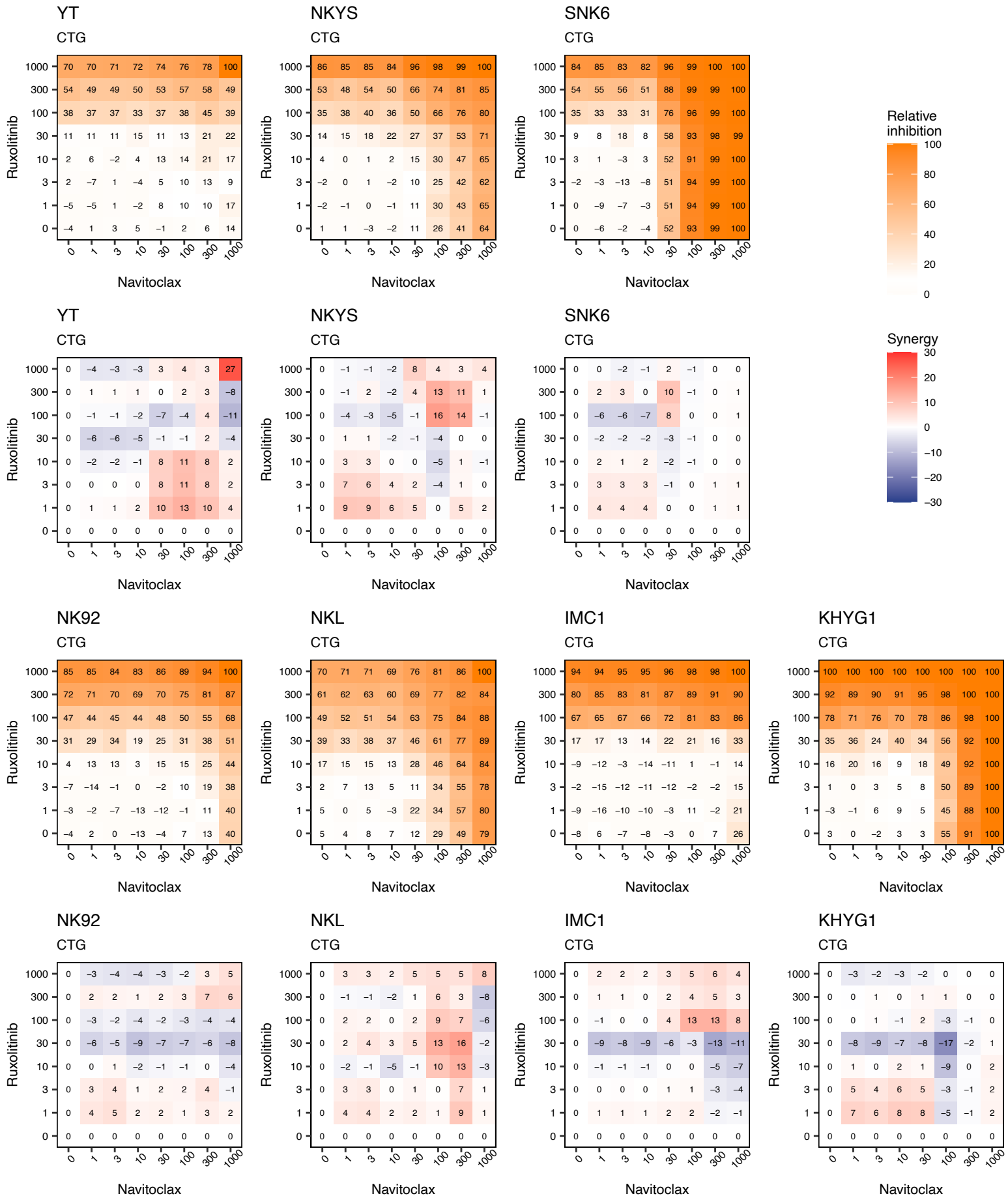
Cell lines: Relative inhibition (%) and synergy (ZIP) for S-63845 and ruxolitinib based on viability readout



Cell lines: Relative inhibition (%) and synergy (ZIP) for S-63845 and ruxolitinib based on toxicity readout

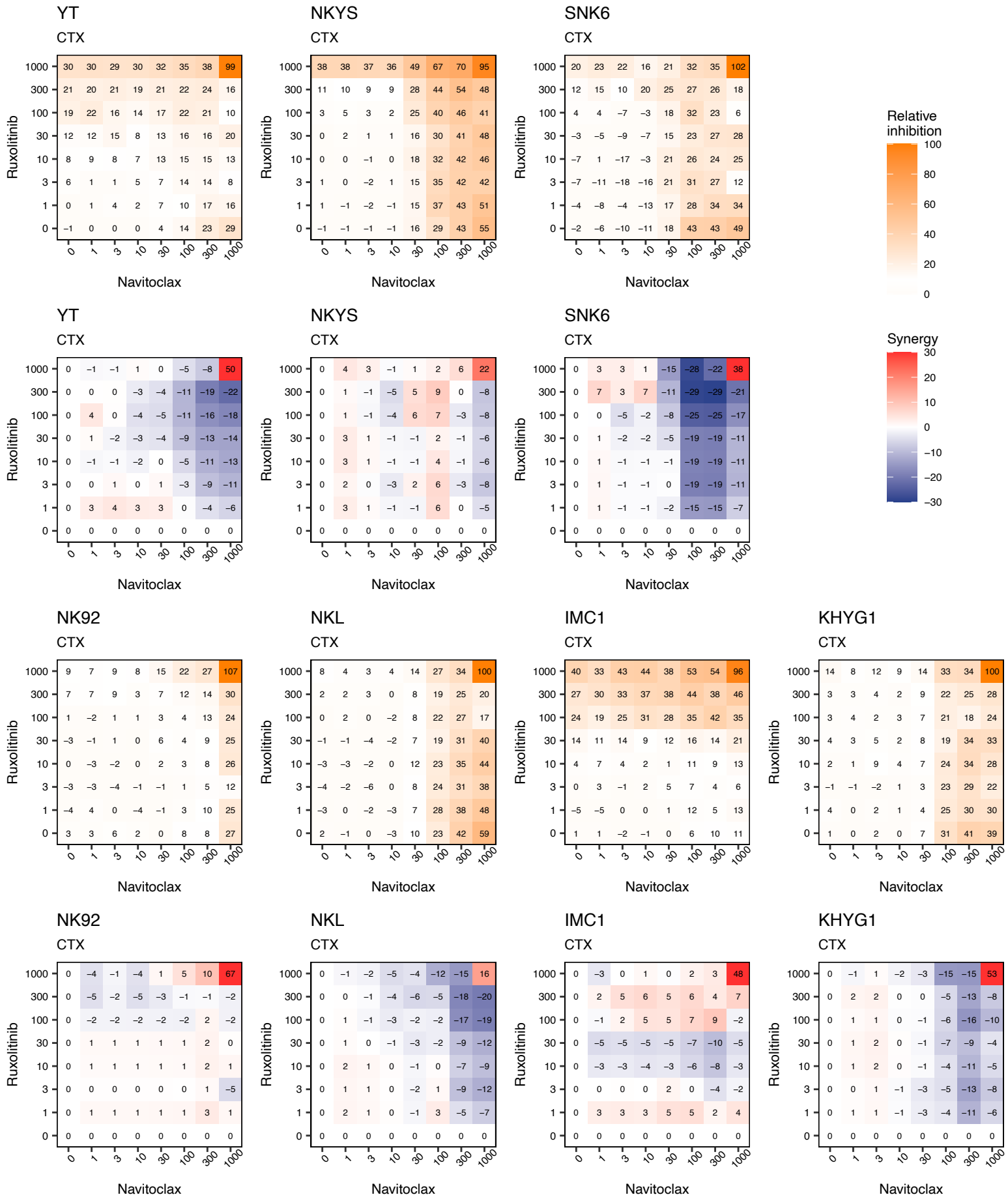


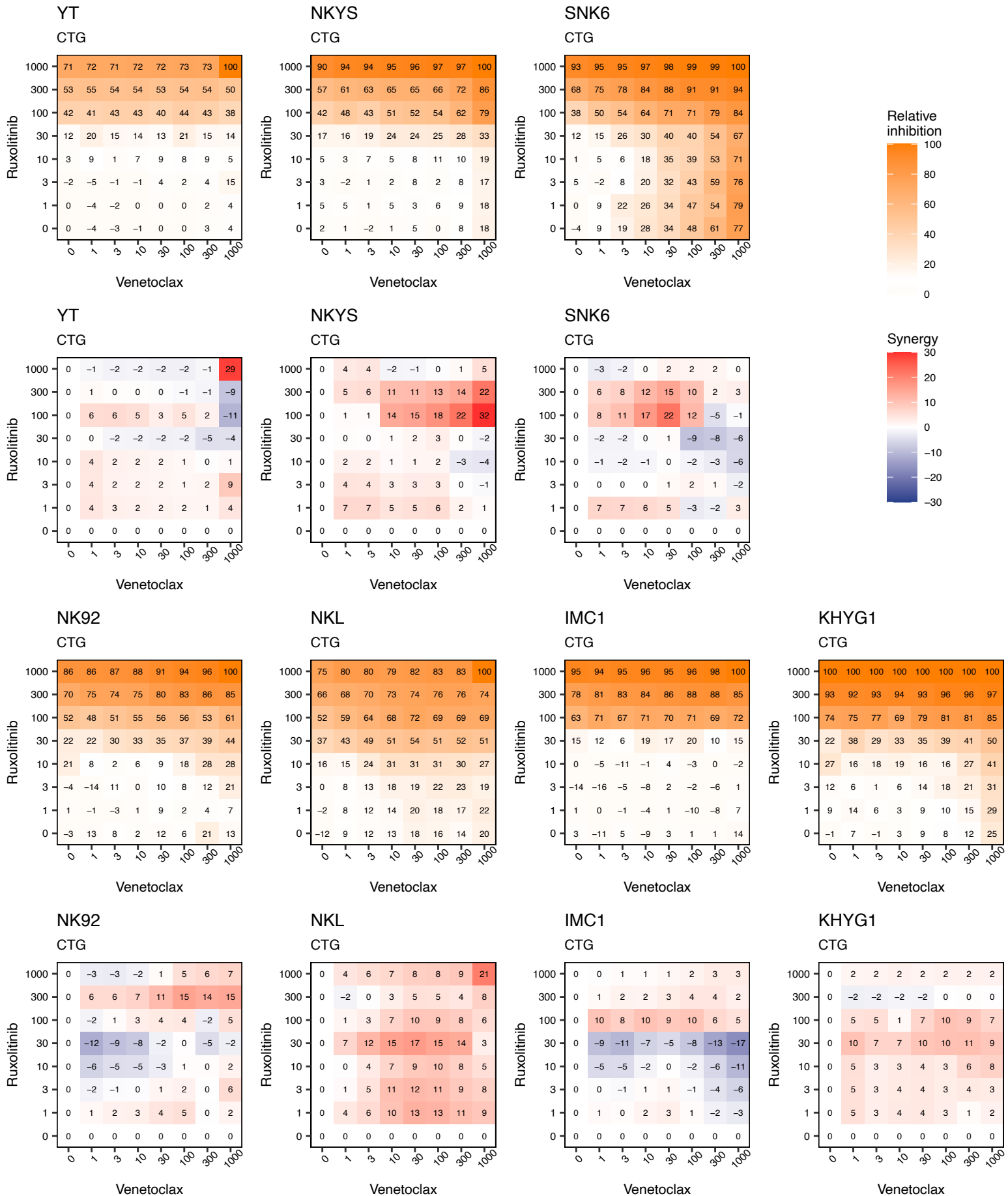
Cell lines: Relative inhibition (%) and synergy (ZIP) for navitoclax and ruxolitinib based on viability readout



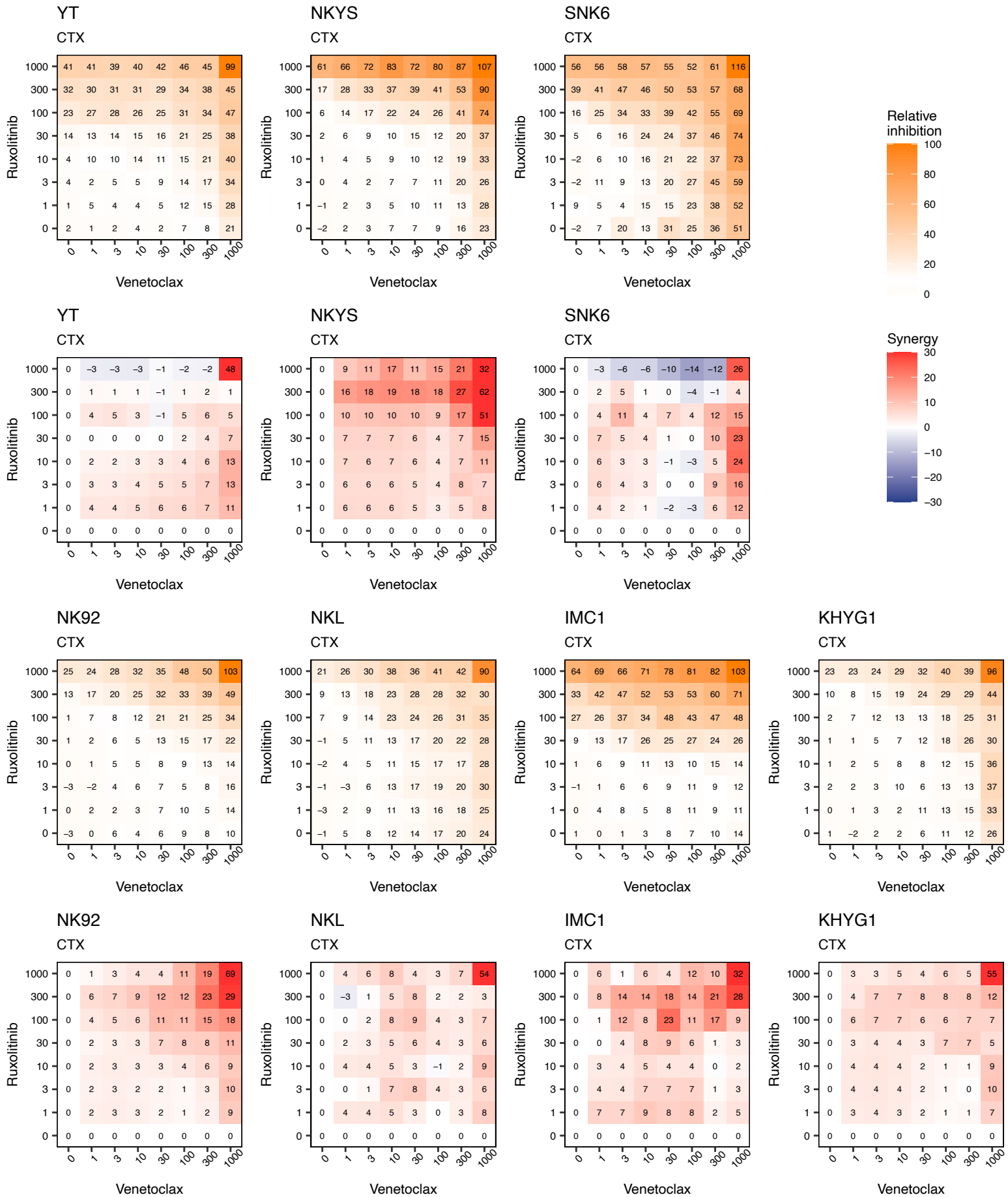


Cell lines: Relative inhibition (%) and synergy (ZIP) for navitoclax and ruxolitinib based on toxicity readout

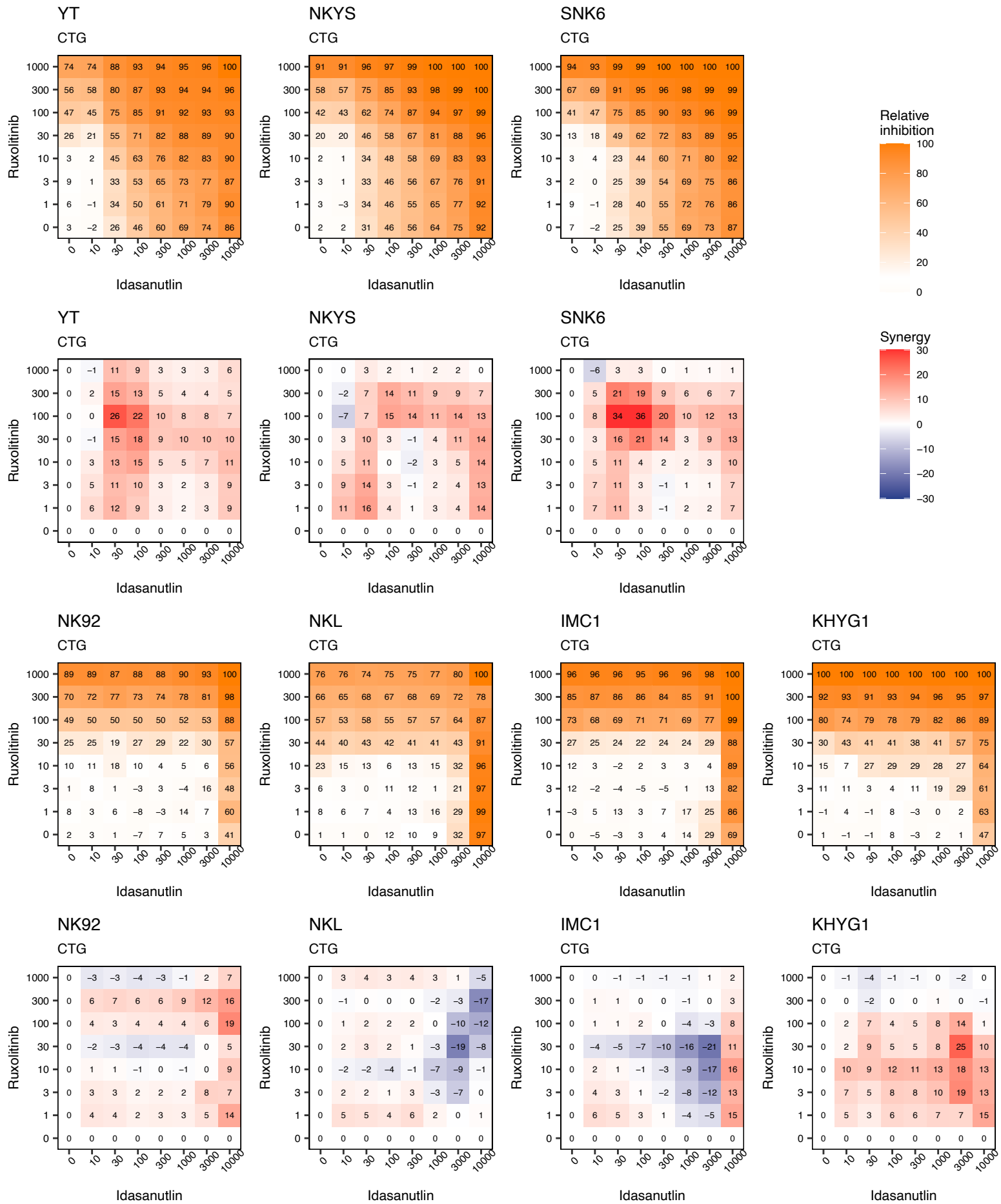




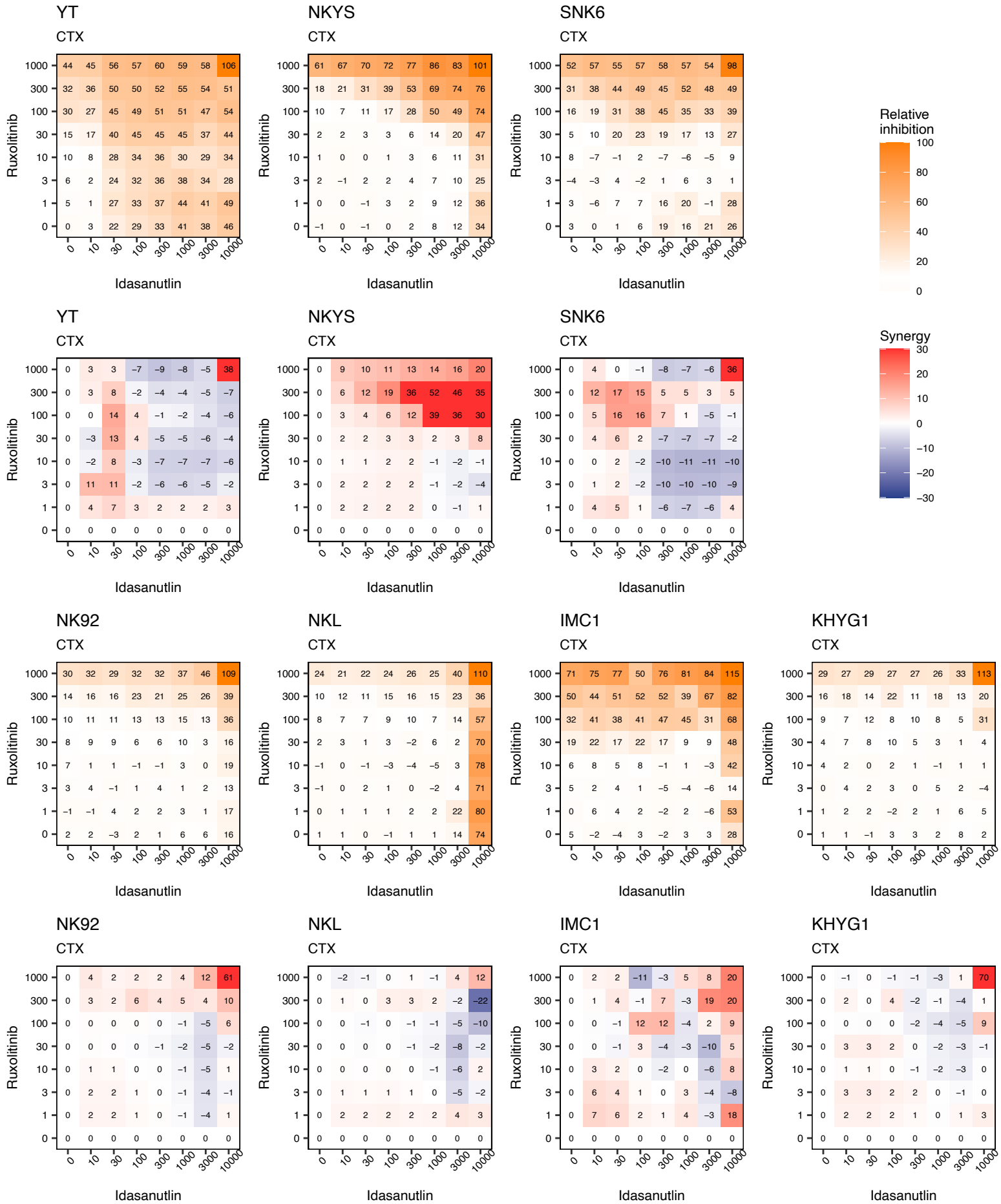
Cell lines: Relative inhibition (%) and synergy (ZIP) for venetoclax and ruxolitnib based on toxicity readout



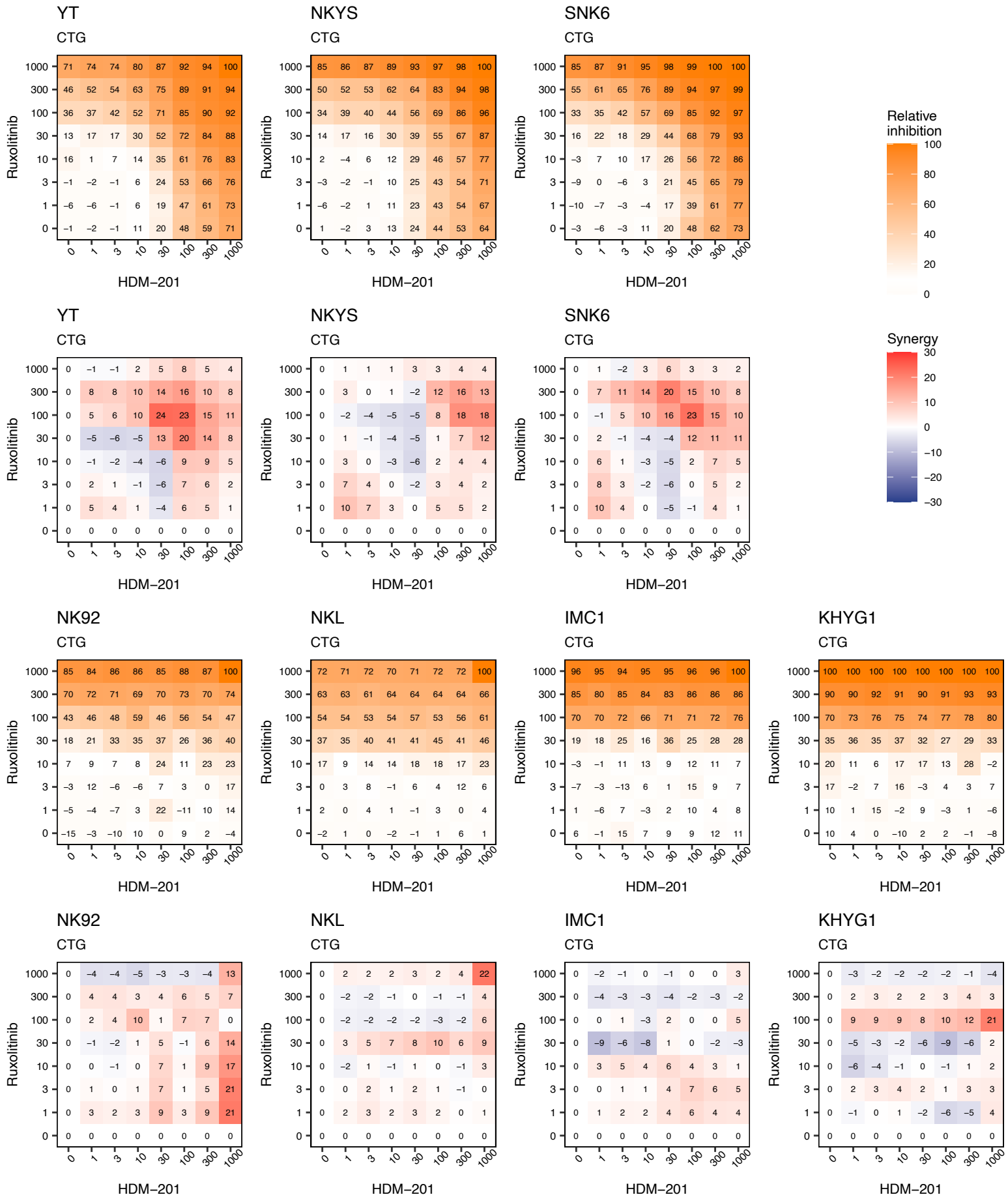
Cell lines: Relative inhibition (%) and synergy (ZIP) for idasanutlin and ruxolitinib based on viability readout



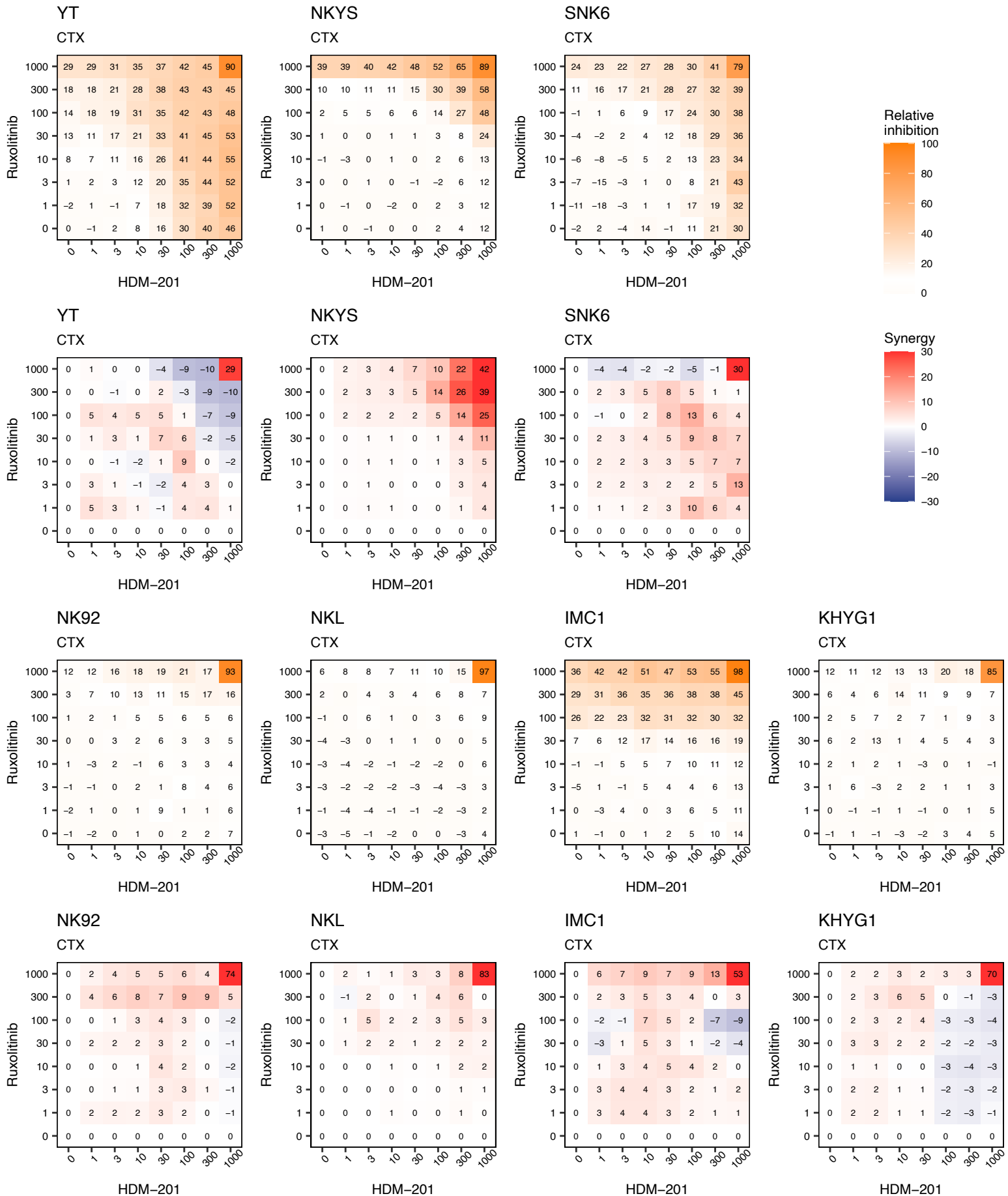
Cell lines: Relative inhibition (%) and synergy (ZIP) for idasanutlin and ruxolitinib based on toxicity readout



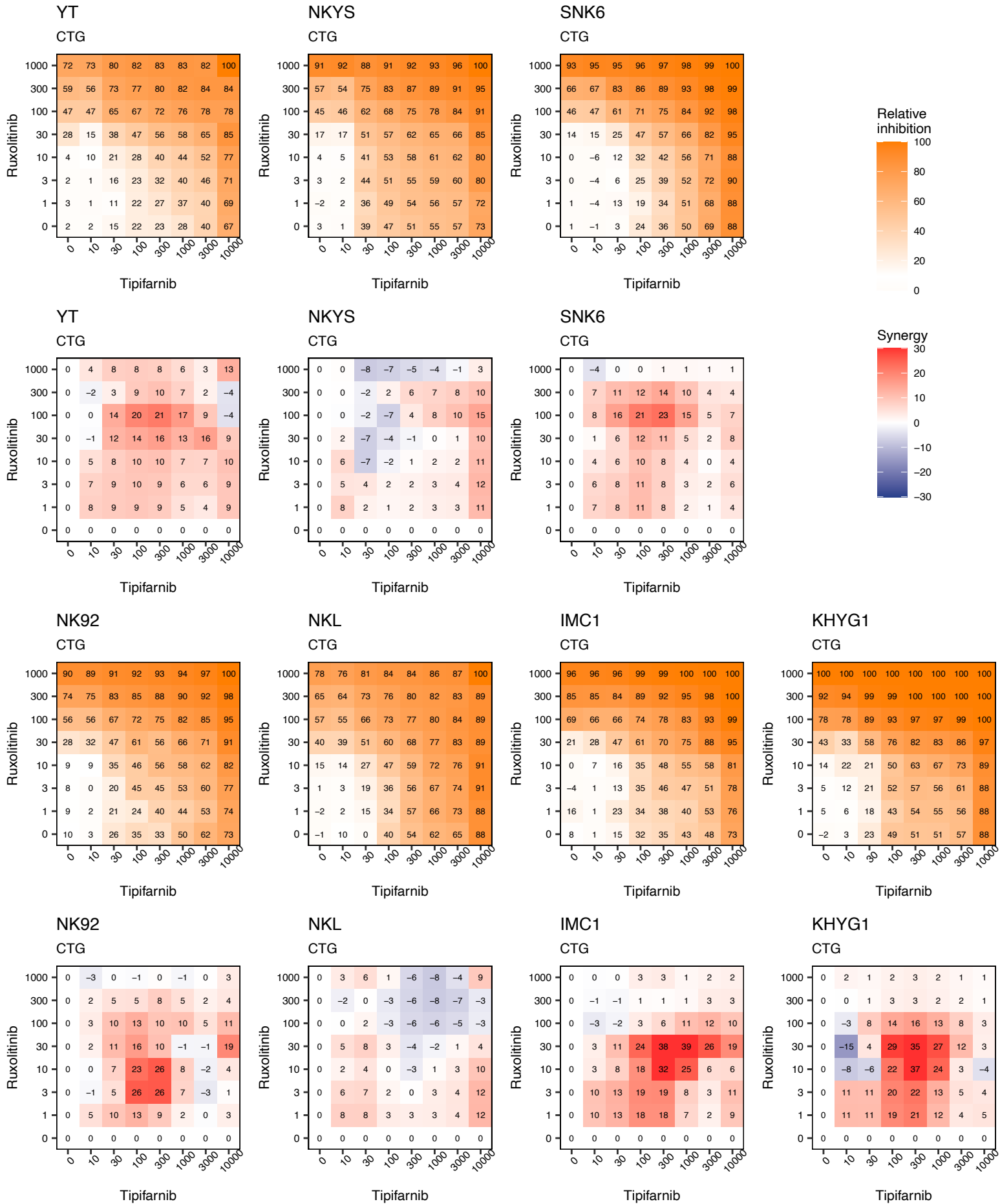
Cell lines: Relative inhibition (%) and synergy (ZIP) for siremadlin (HDM-201) and ruxolitinib based on viability readout



Cell lines: Relative inhibition (%) and synergy (ZIP) for siremadlin (HDM-201) and ruxolitinib based on toxicity readout

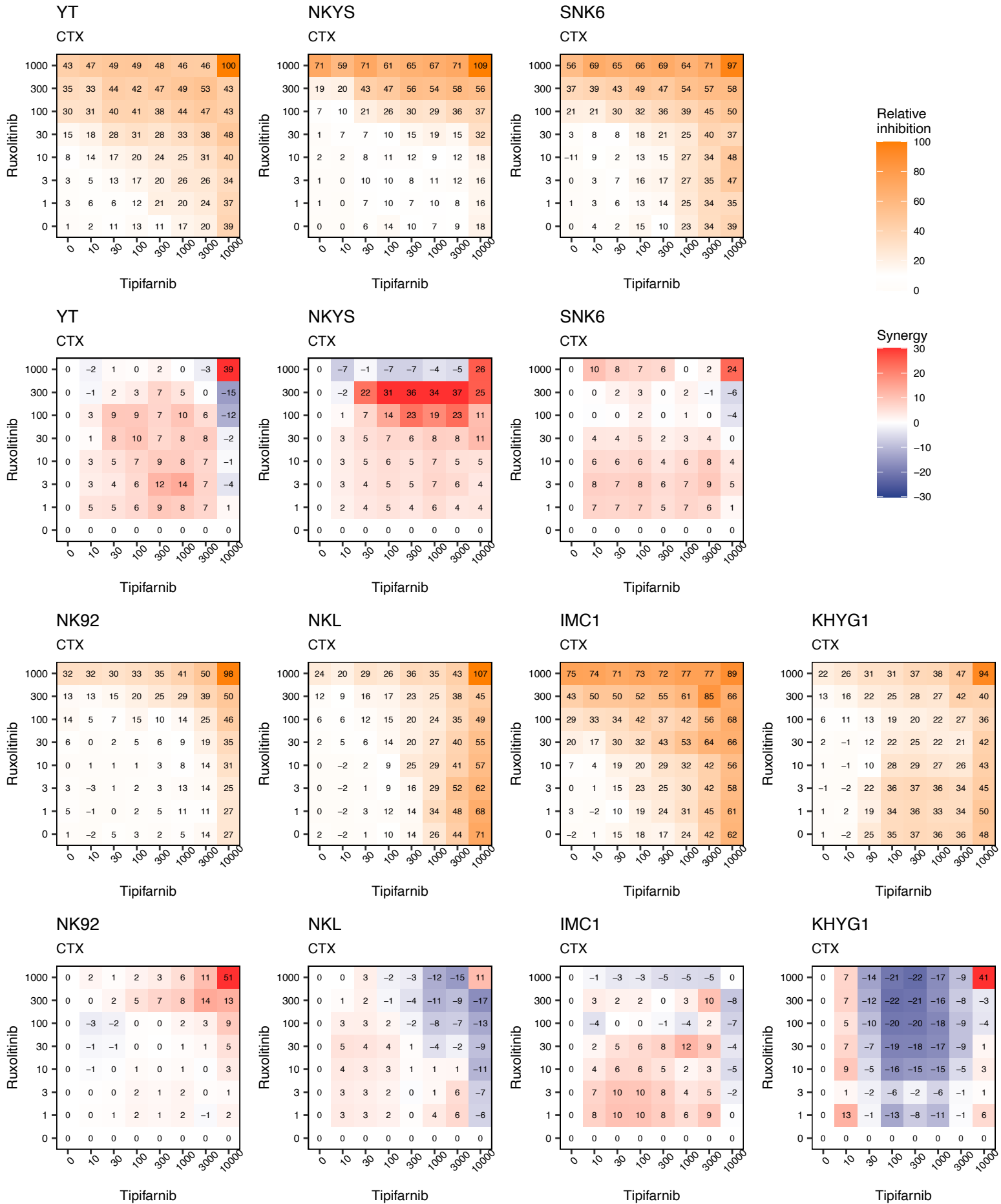


Cell lines: Relative inhibition (%) and synergy (ZIP) for tipifarnib and ruxolitinib based on viability readout

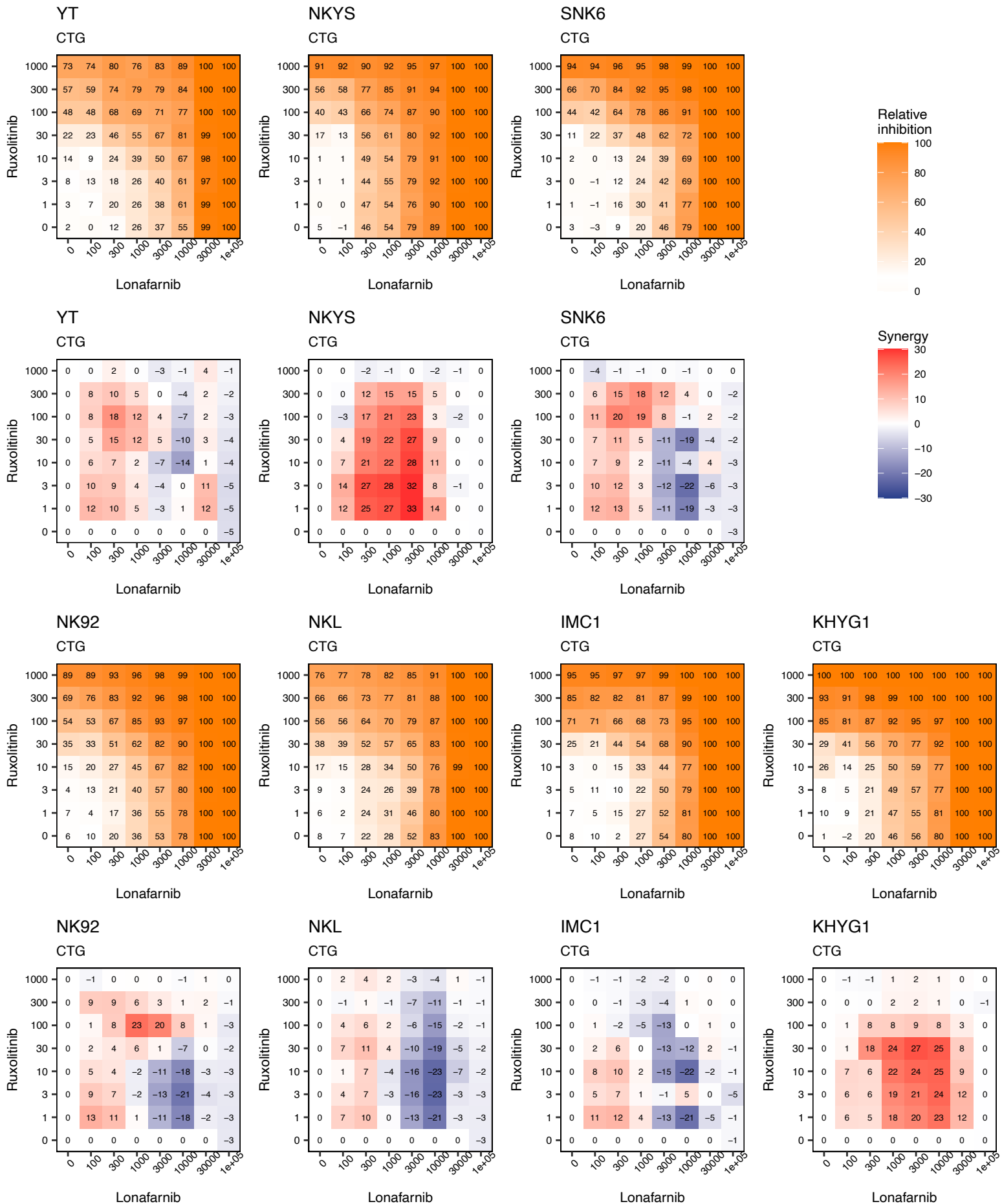




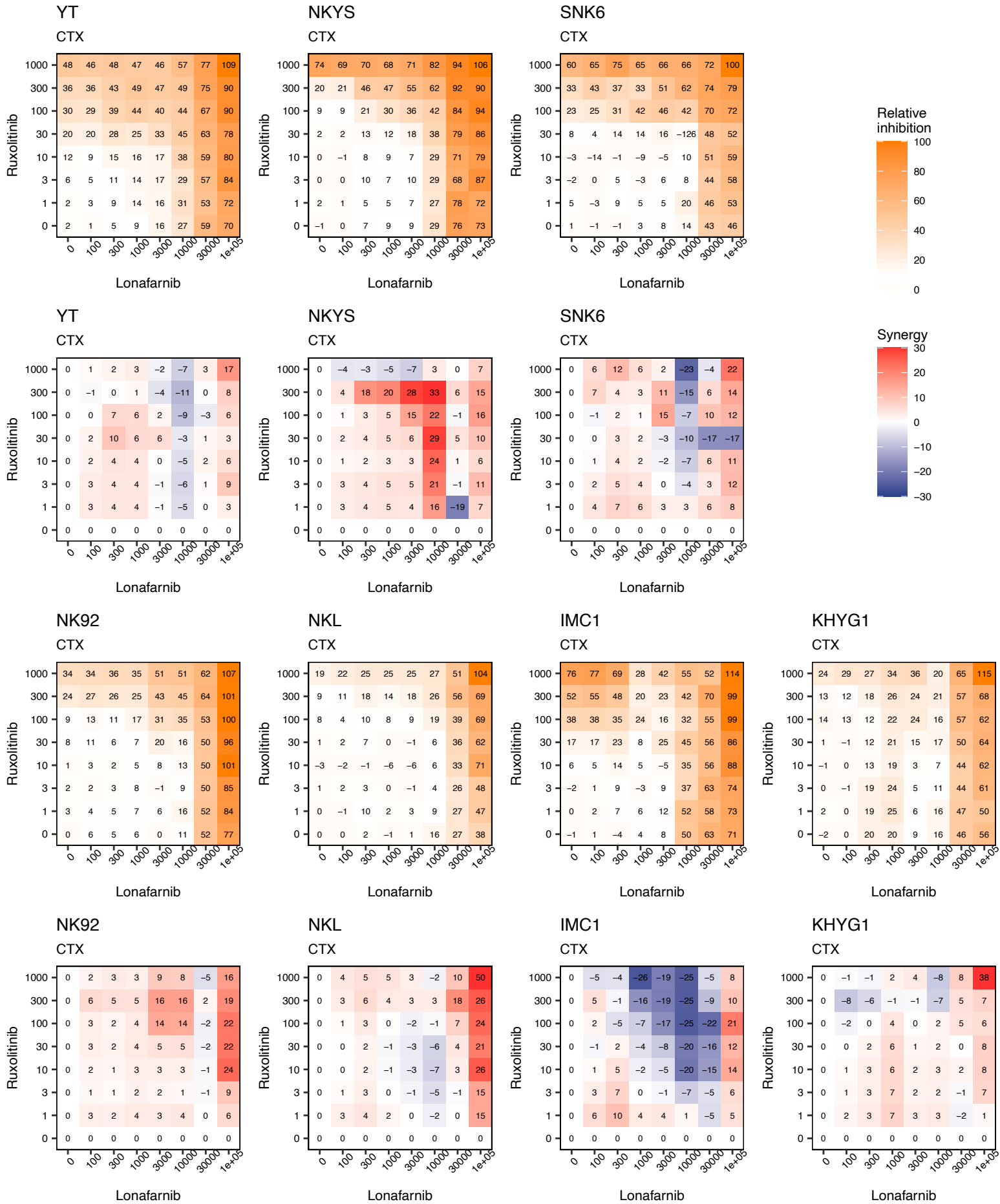
Cell lines: Relative inhibition (%) and synergy (ZIP) for tipifarnib and ruxolitinib based on toxicity readout



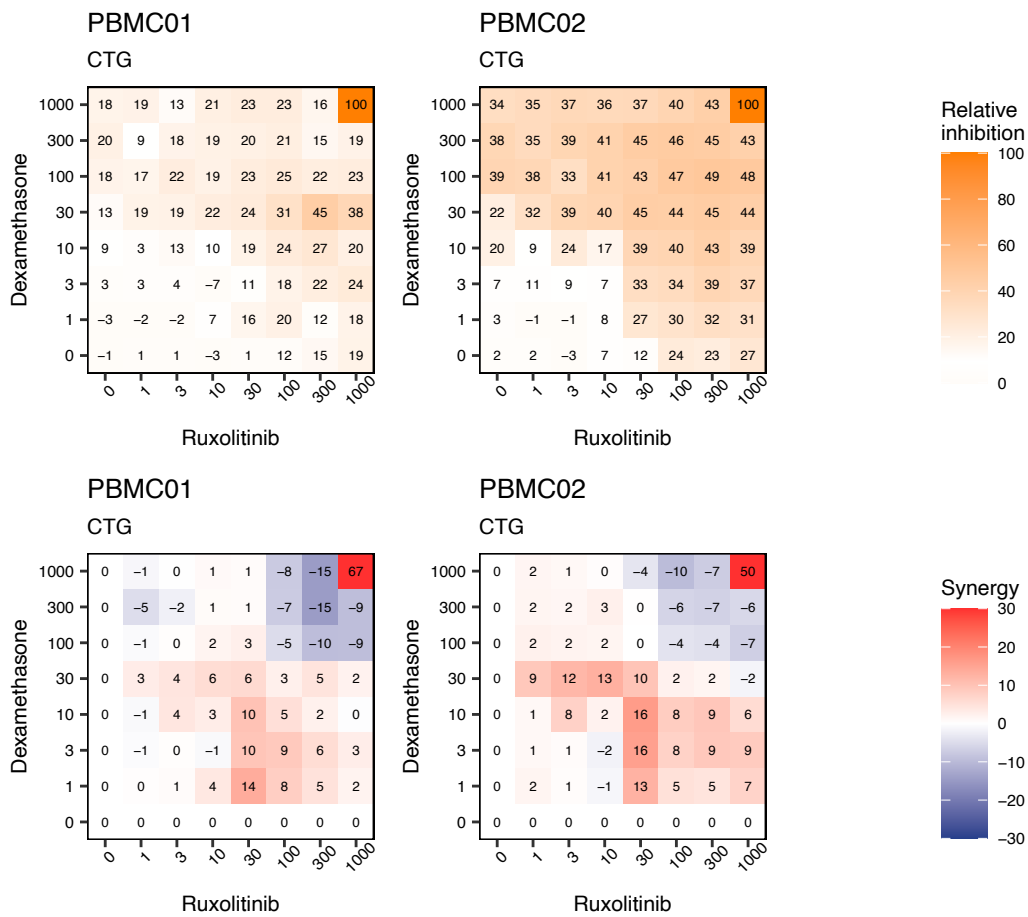
Cell lines: Relative inhibition (%) and synergy (ZIP) for lonafarnib and ruxolitinib based on viability readout

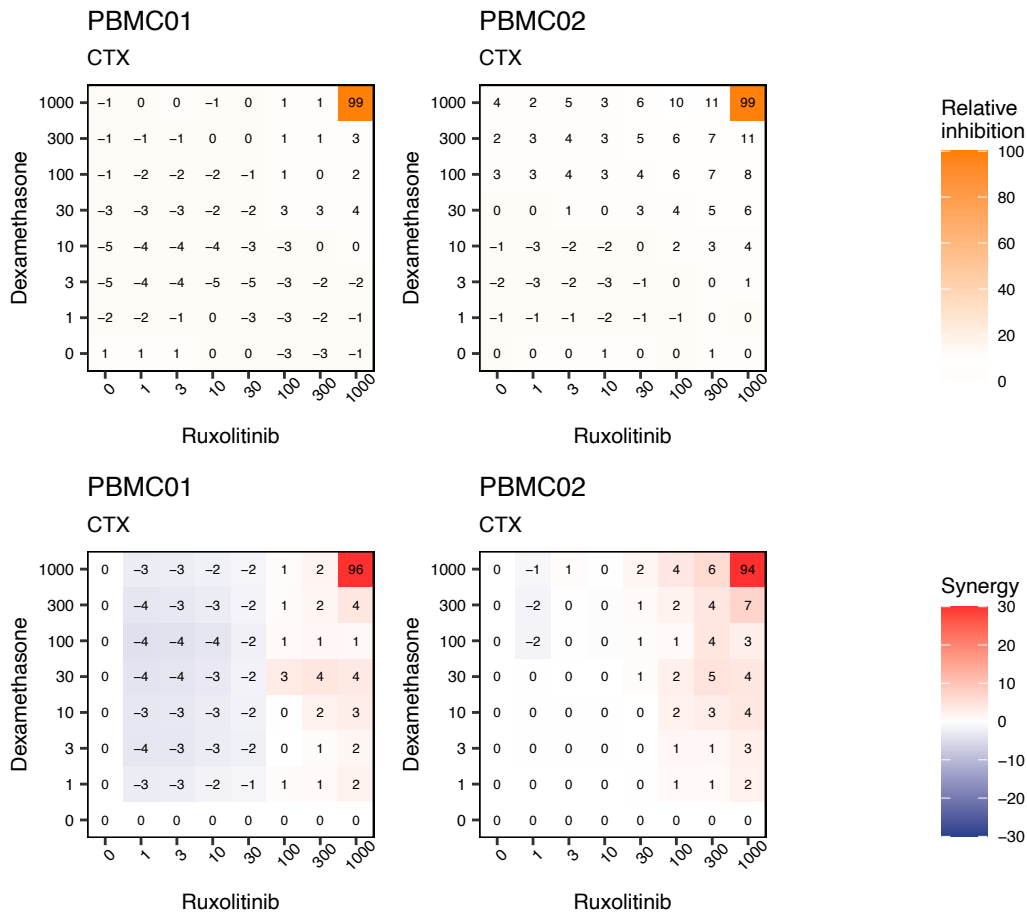


Cell lines: Relative inhibition (%) and synergy (ZIP) for lonafarnib and ruxolitinib based on toxicity readout

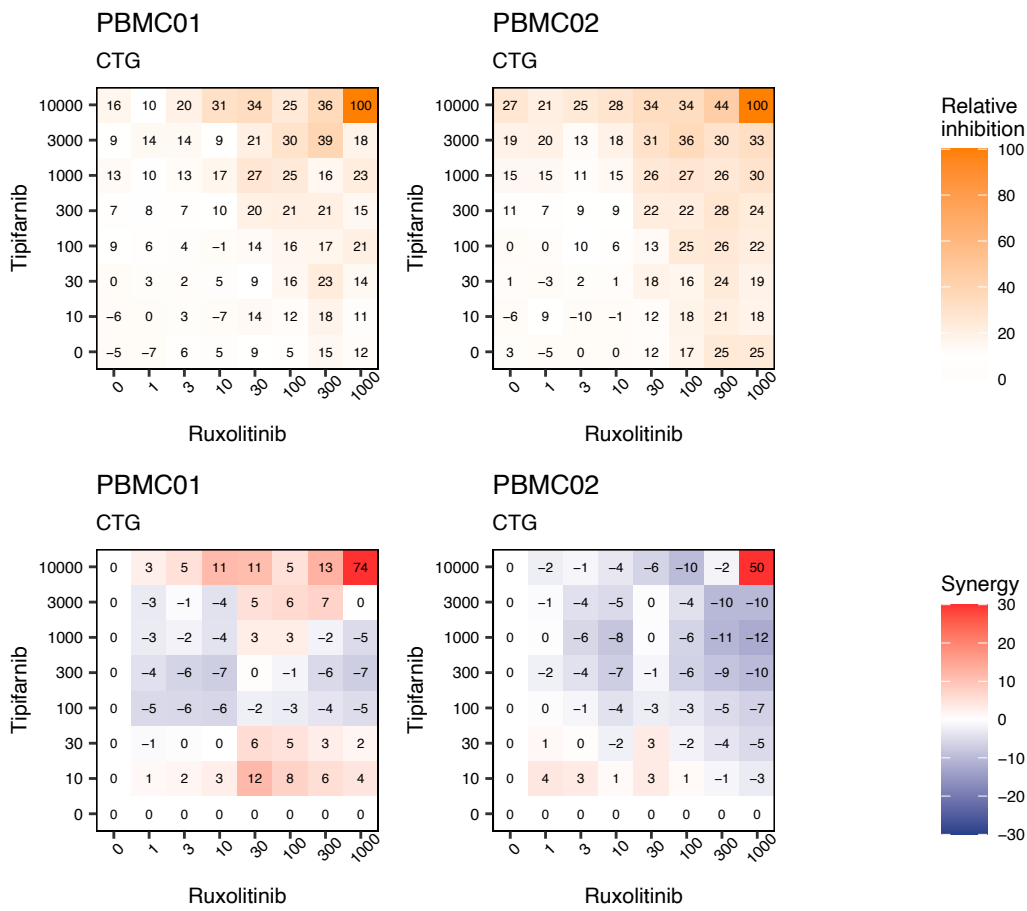


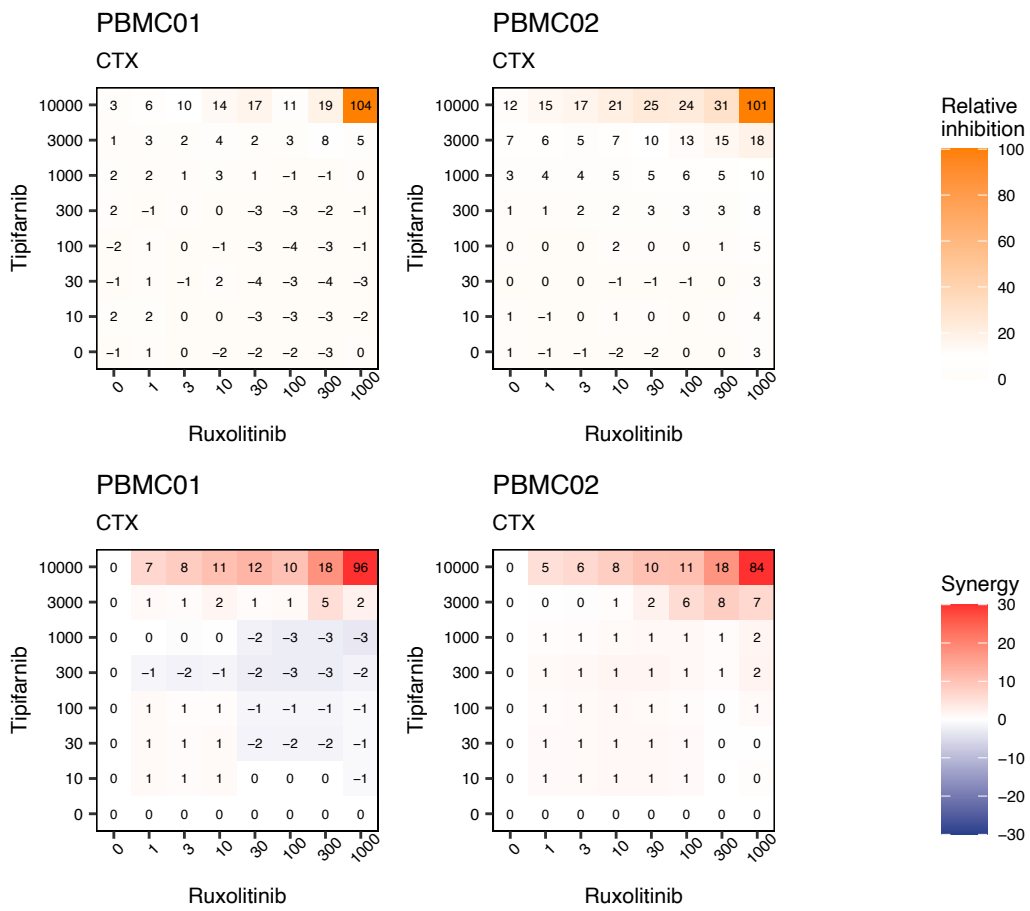
Healthy PBMCs: Relative inhibition (%) and synergy (ZIP) for dexamethasone and ruxolitinib based on viability readout



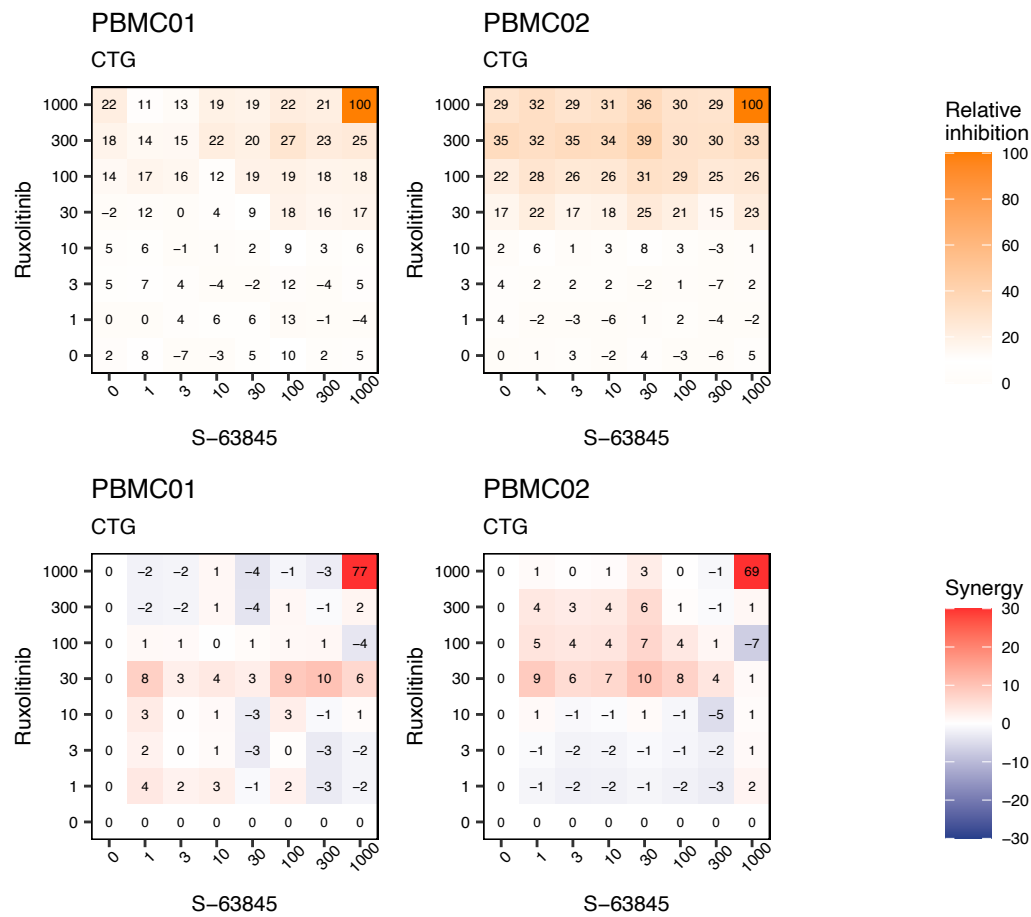


Healthy PBMCs: Relative inhibition (%) and synergy (ZIP) for tipifarnib and ruxolitinib based on viability readout



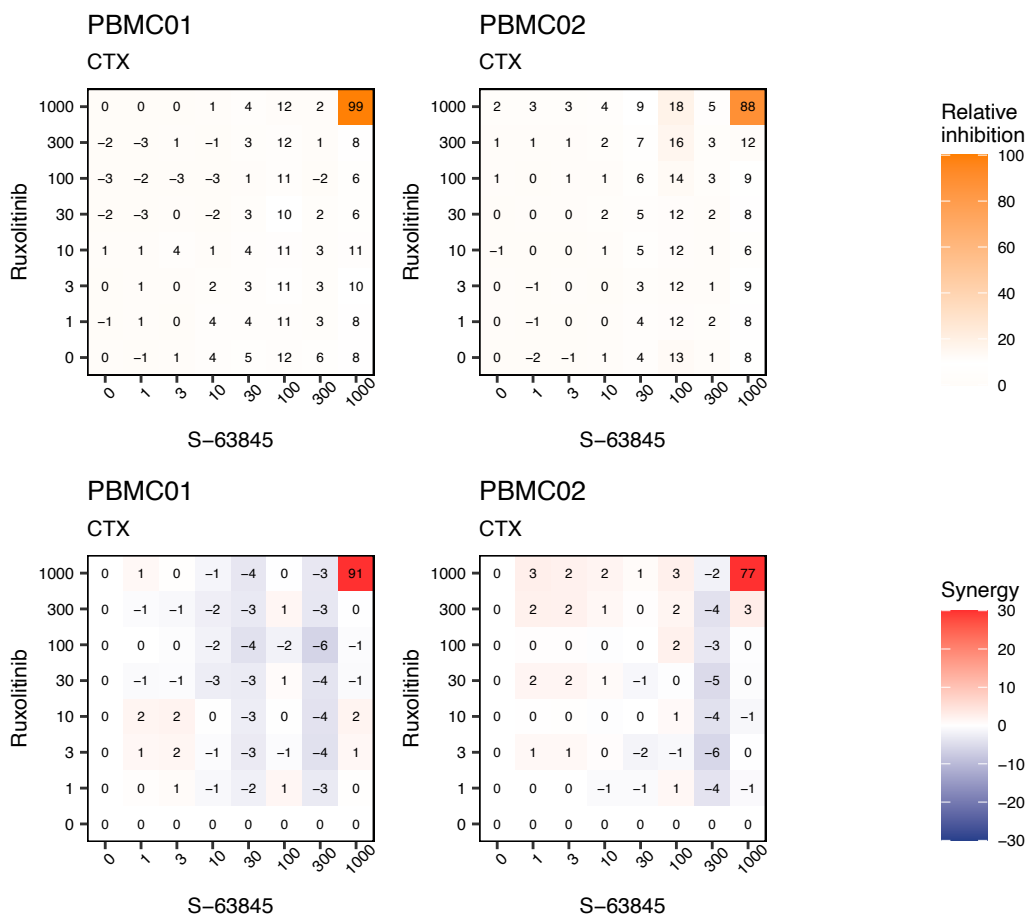


Healthy PBMCs: Relative inhibition (%) and synergy (ZIP) for S-63845 and ruxolitinib based on viability readout

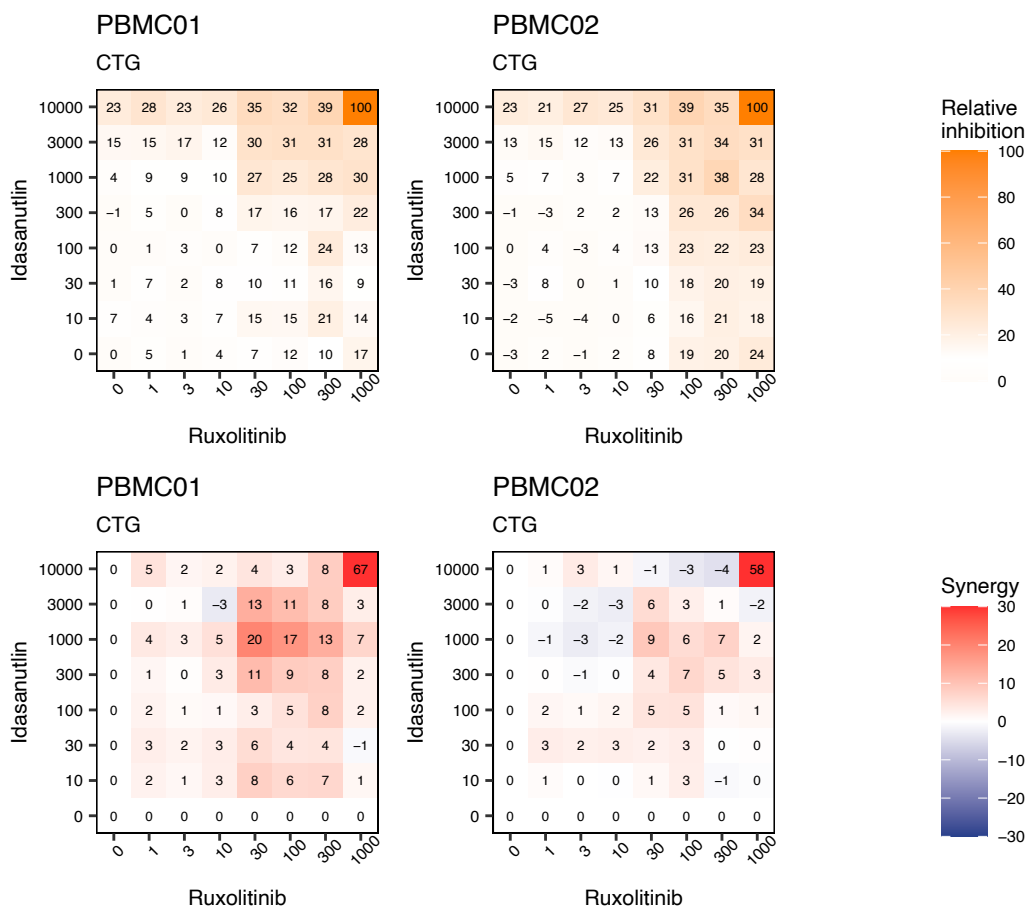




Healthy PBMCs: Relative inhibition (%) and synergy (ZIP) for S-63845 and ruxolitinib based on toxicity readout



Healthy PBMCs: Relative inhibition (%) and synergy (ZIP) for idasanutlin and ruxolitinib based on viability readout



Healthy PBMCs: Relative inhibition (%) and synergy (ZIP) for idasanutlin and ruxolitinib based on toxicity readout

