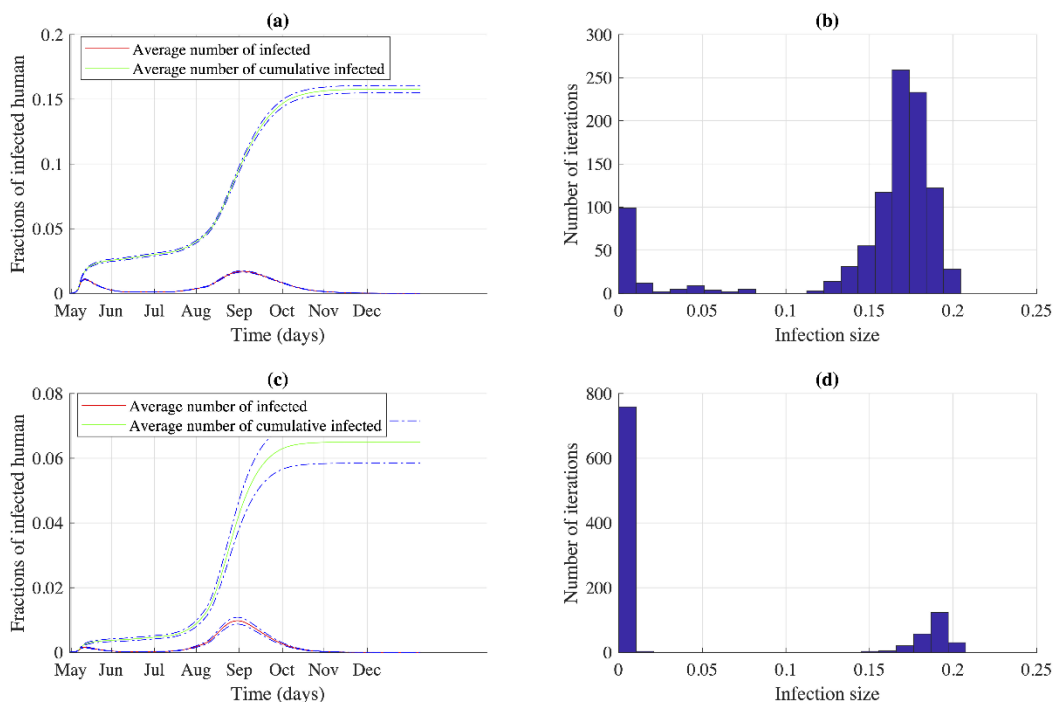


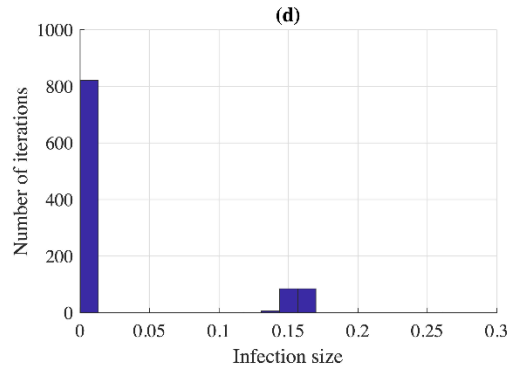
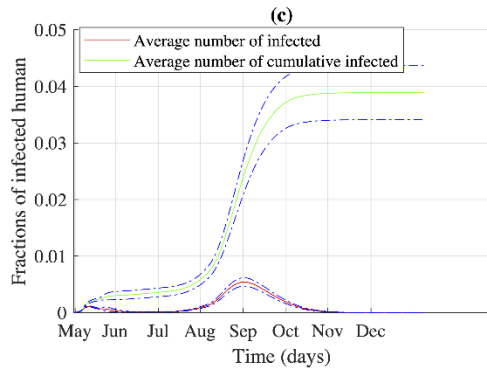
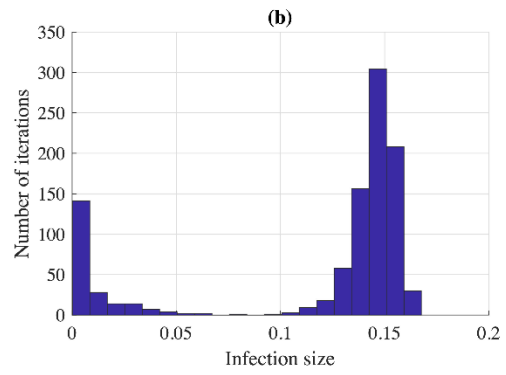
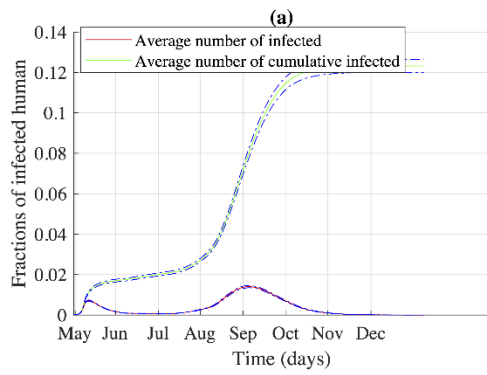
The following are supplemental materials and will be published online only

Supplemental Material

Simulations were performed for two-month lagged climate data. These results were similar to the one-month lagged climate data while results shifted one month. Risk maps were similar to one-month lagged data. Simulation results are presented in the following section.



Supporting Fig. 1: Transmission dynamics of dengue in Bangladesh when the simulation started in Dhaka with two-month lagged climate data and district-level movement network (b) Corresponding histogram (c) Spreading dynamics of dengue in Bangladesh when the simulation started in Chittagong with two-month lagged climate data and district-level movement network (d) Corresponding histogram



Supporting Fig. 2: Transmission dynamics of dengue in Bangladesh when the simulation started in Dhaka with two-month lagged climate data and division-level movement network (b) Corresponding histogram (c) Spreading dynamics of dengue in Bangladesh when the simulation started in Chittagong with two-month lagged climate data and division-level movement network (d) Corresponding histogram