

## **Repositioning metformin and propranolol for colorectal and triple negative breast cancers treatment**

LE Anselmino<sup>1,2</sup>, MV Baglioni<sup>2,3</sup>, F Malizia<sup>1,2</sup>, N Cesatti Laluce<sup>1,2</sup>, C Borini Etichetti<sup>2,4</sup>, VL Martínez Marignac<sup>2,5</sup>, V Rozados<sup>2,3</sup>, OG Scharovsky<sup>2,3</sup>, J Girardini<sup>1,2</sup>, MJ Rico<sup>2,3</sup>, M Menacho Márquez<sup>1,2,6\*</sup>.

**Running title:** Combination of repositioned drugs prevents colorectal and triple negative breast cancers growth and development

### **Affiliations**

<sup>1</sup> Instituto de Inmunología Clínica y Experimental de Rosario. (IDICER, CONICET-UNR). Facultad de Ciencias Médicas (UNR). Santa Fe 3100, Rosario, Argentina.

<sup>2</sup> CONICET

<sup>3</sup> Instituto de Genética Experimental, Facultad de Ciencias Médicas. Santa Fe 3100, Rosario. Argentina.

<sup>4</sup> Instituto de Fisiología Experimental (IFISE, CONICET-UNR). Facultad de Ciencias Bioquímicas y Farmacéuticas (UNR), Suipacha 570, 2000, Rosario, Argentina.

<sup>5</sup> CICYTTP IBIOGEM, CONICET, Diamante, Argentina.

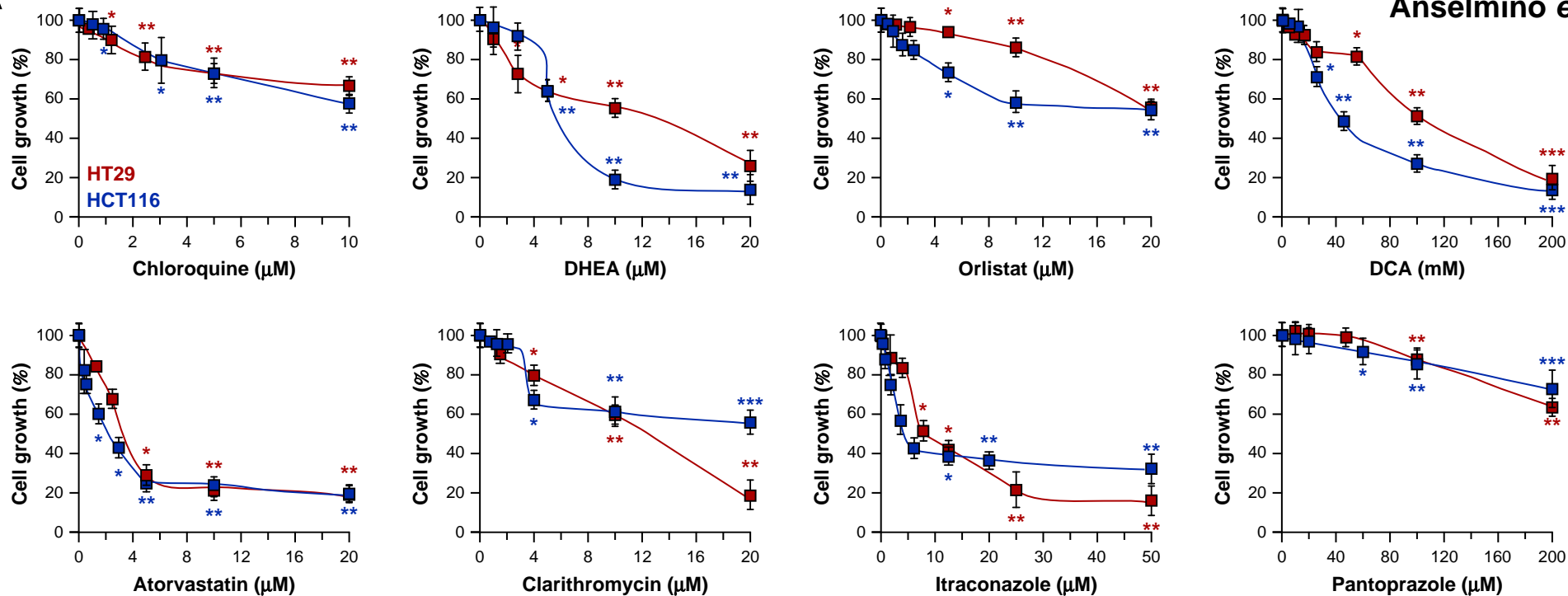
<sup>6</sup> Centro de Investigación y Producción de Reactivos Biológicos (CIPReB), Facultad de Ciencias Médicas. Suipacha 660, Rosario. Argentina

\*To whom correspondence should be addressed:

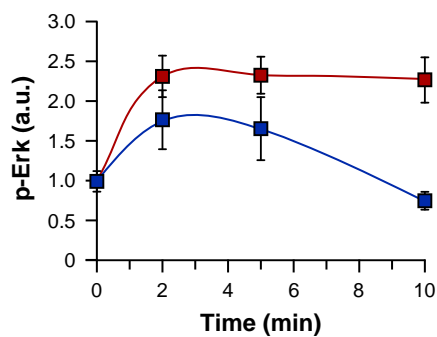
**E-mail:** mmenacho@conicet.gov.ar / **Phone:** +54-3413615828 / **Fax:** +54-3414804569

**Total number of figures and tables:** 5 main figures, 5 supplementary figures and 6 supplementary tables.

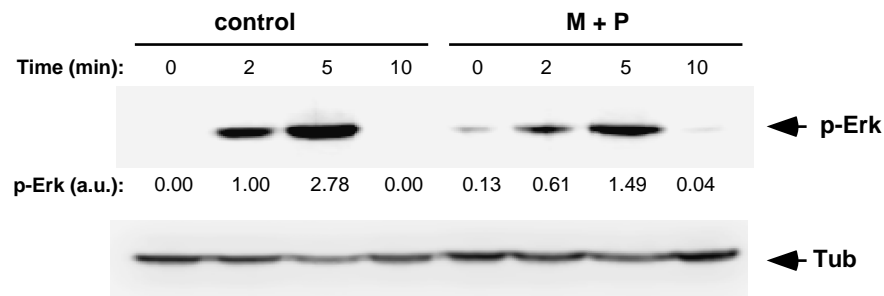
**A**



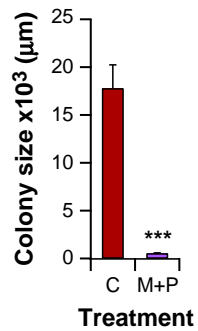
**B**



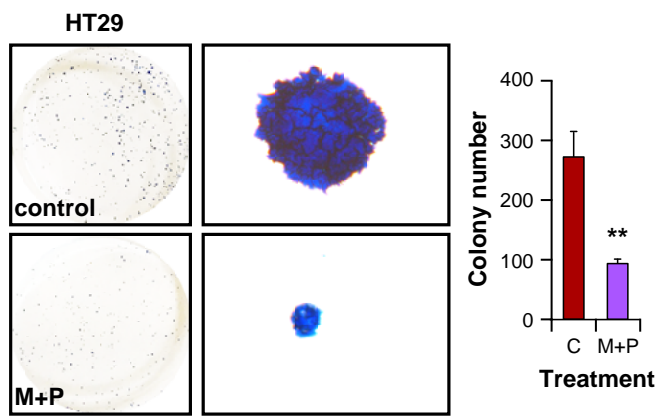
**C**



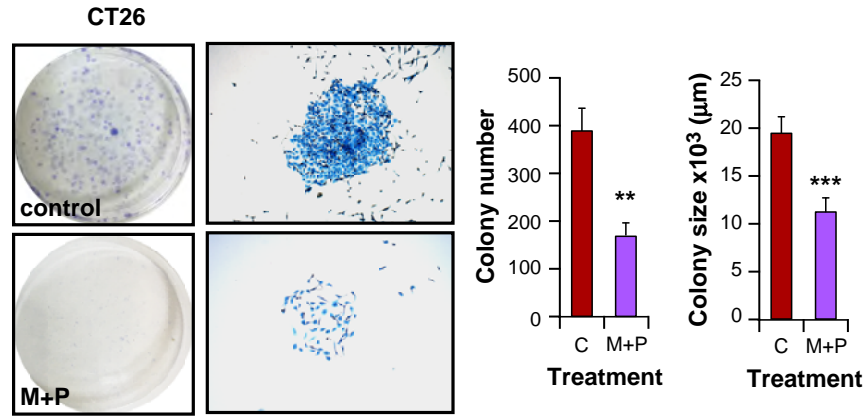
**D**



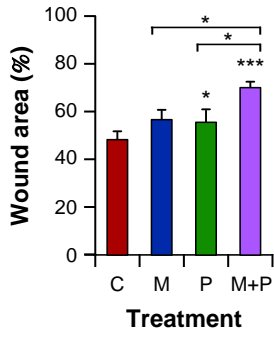
**E**



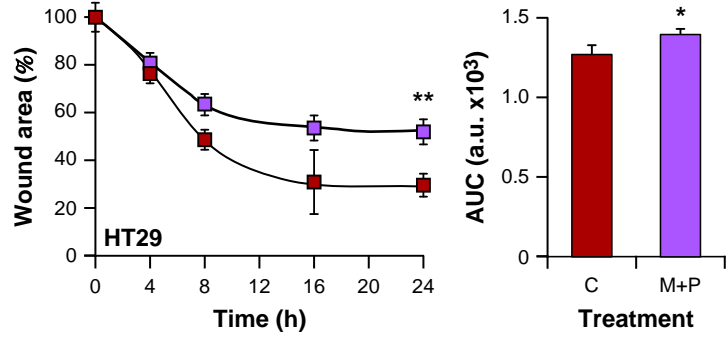
**F**



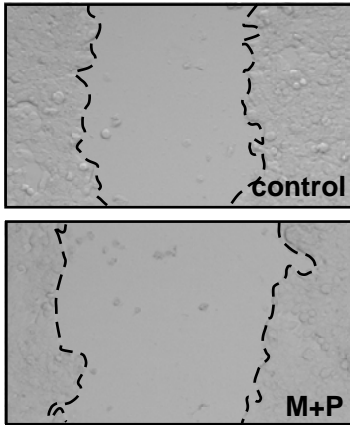
**A**



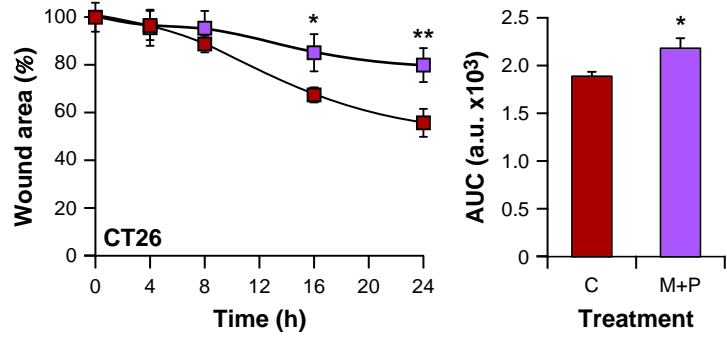
**B**



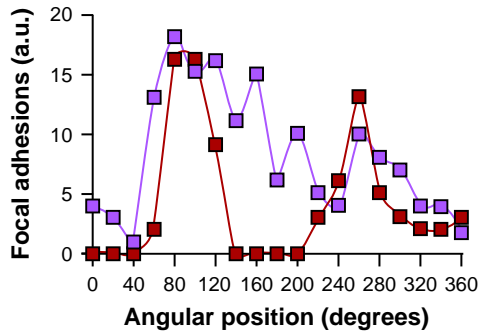
**C**



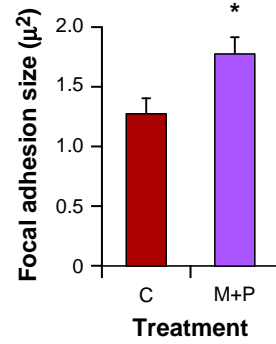
**D**



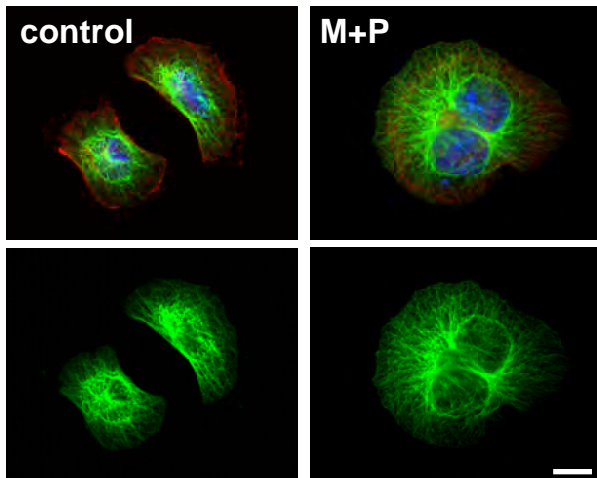
**E**



**F**

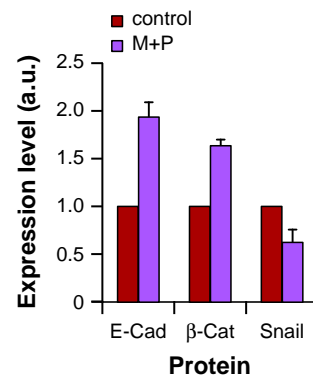


**G**

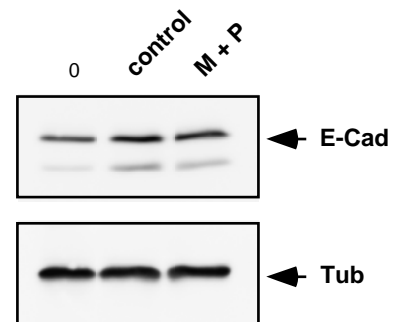


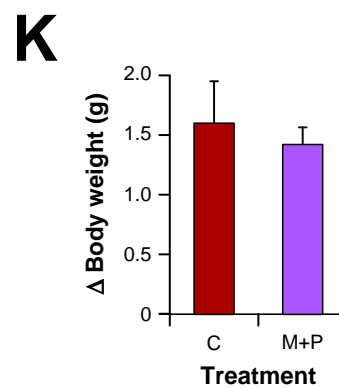
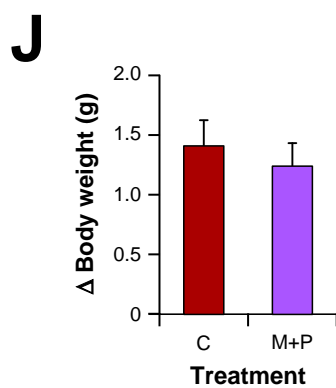
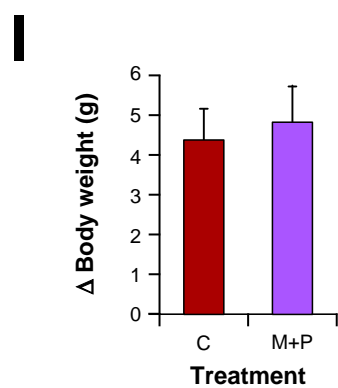
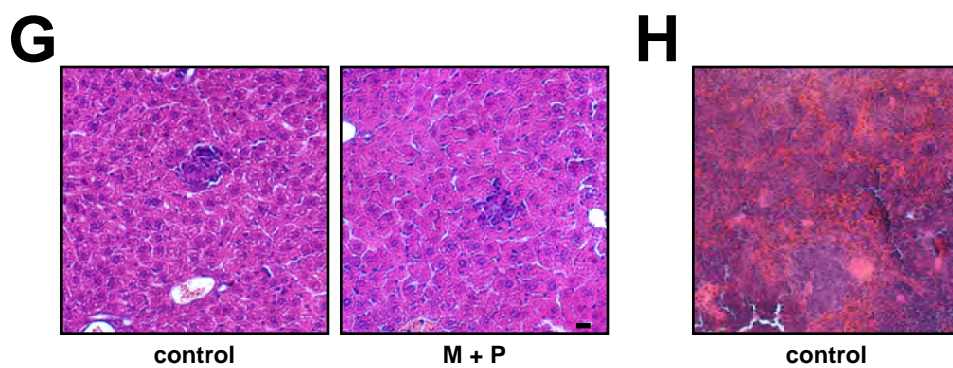
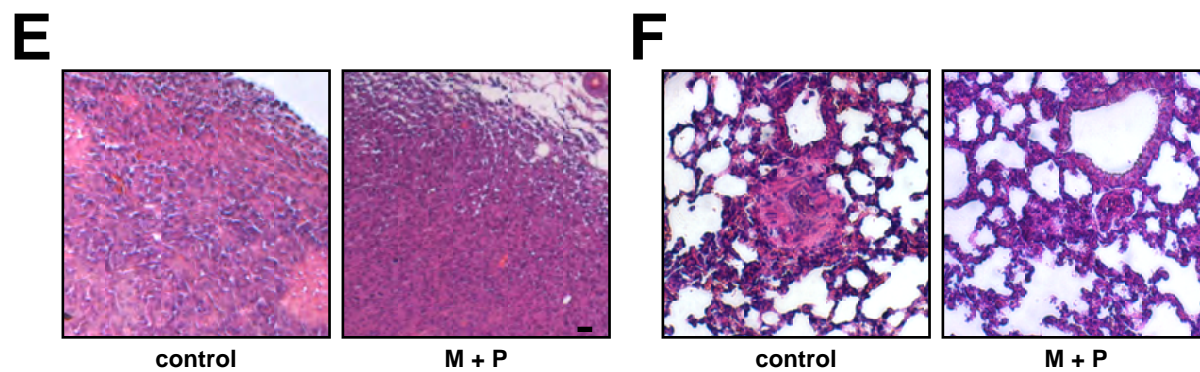
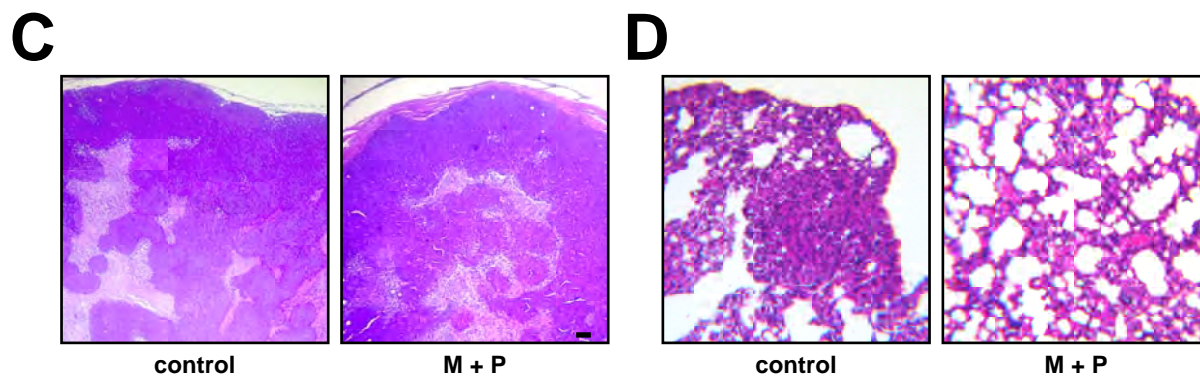
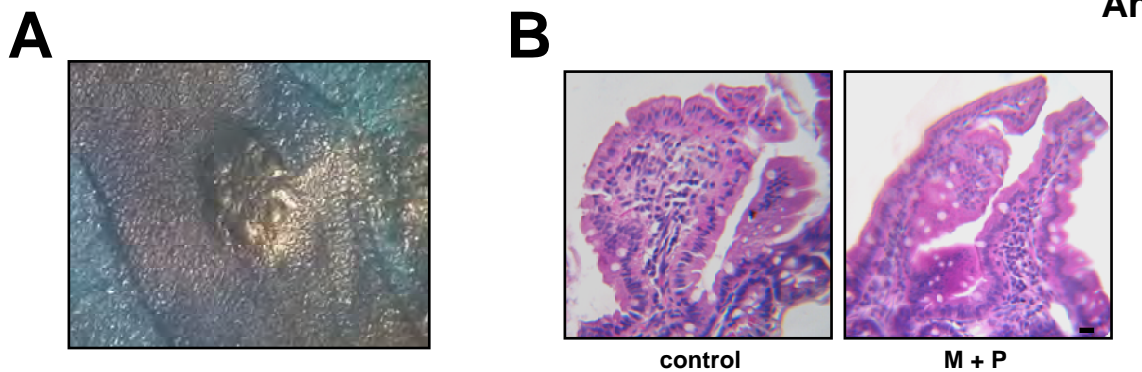
Tubulin - F-actin - DAPI

**H**

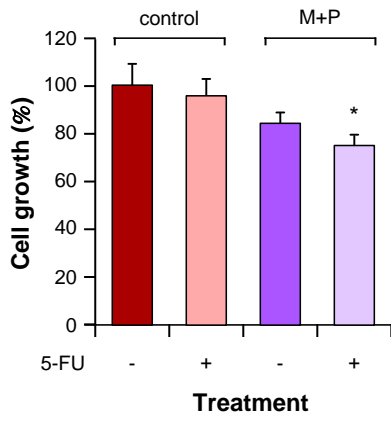


**I**

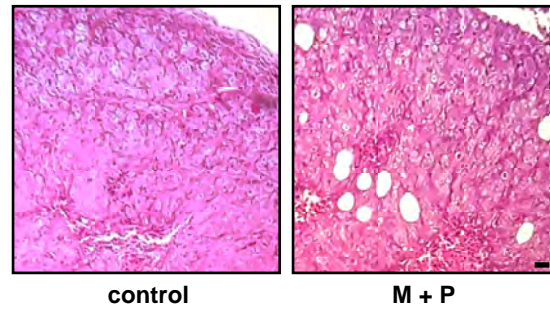




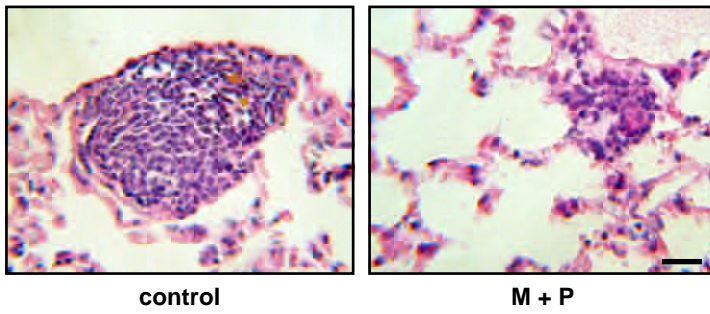
**A**



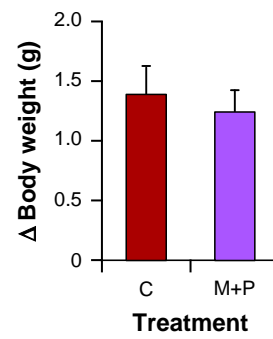
**B**



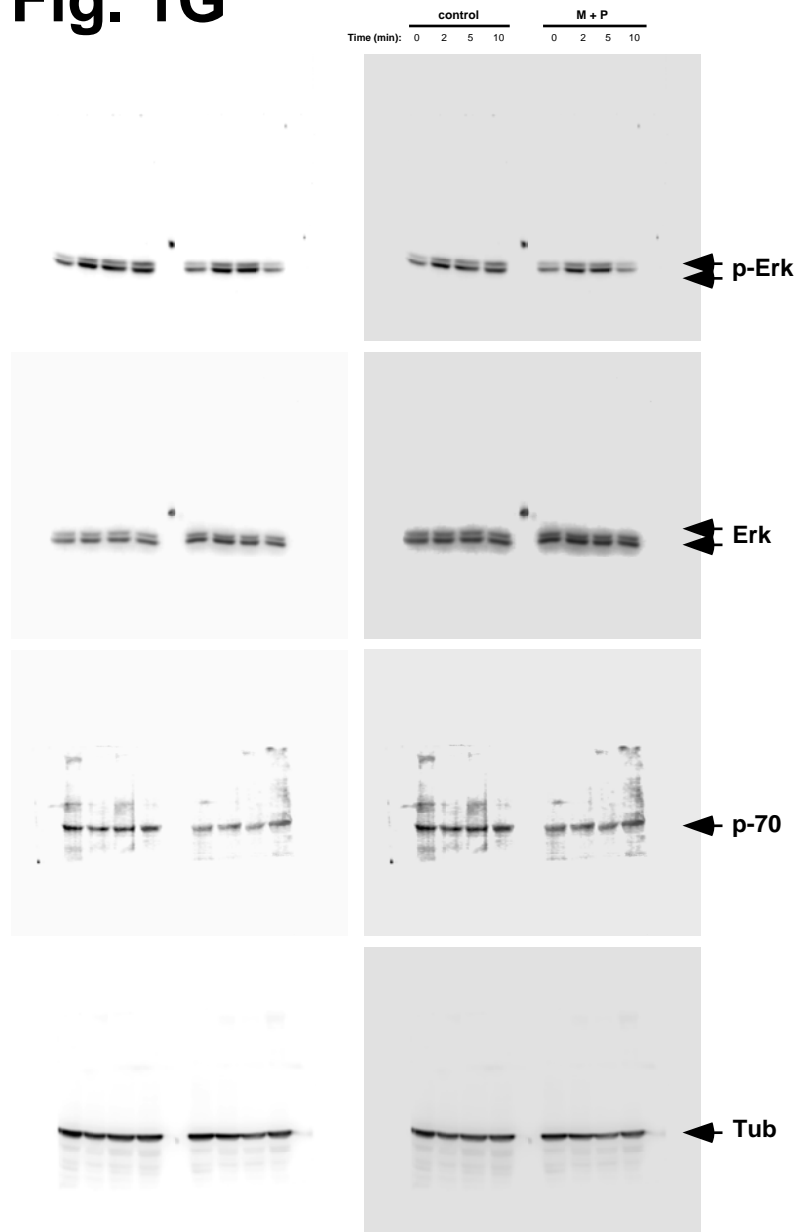
**C**



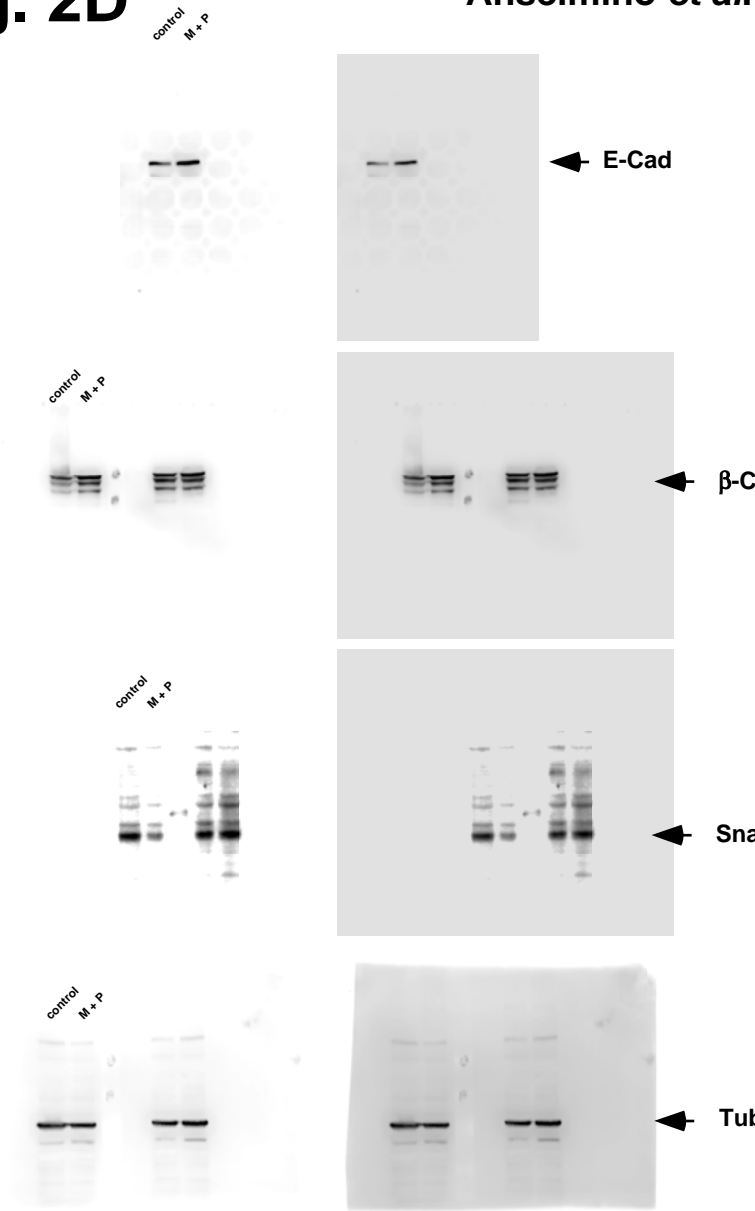
**D**



# Fig. 1G

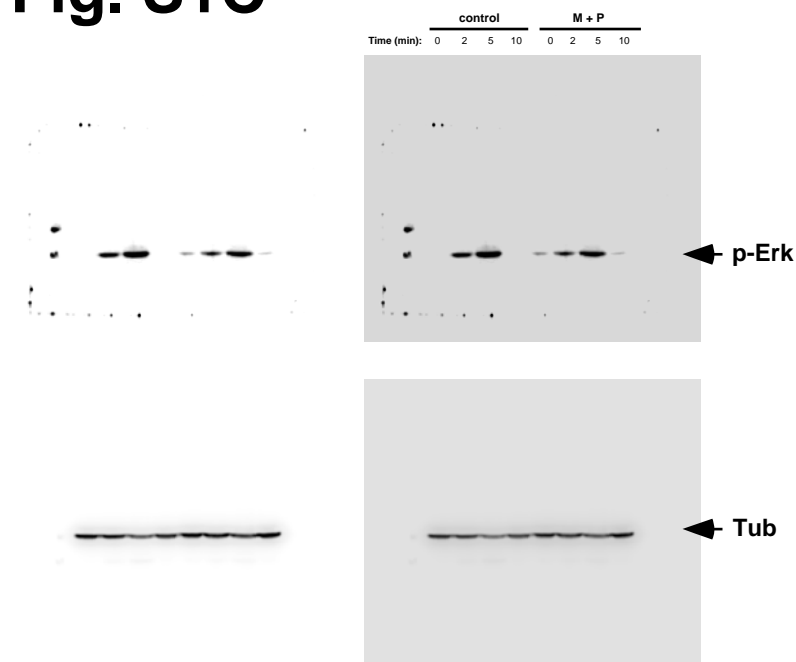


# Fig. 2D



# Figure S-5 Anselmino et al.

# Fig. S1C



# Fig. S2I

