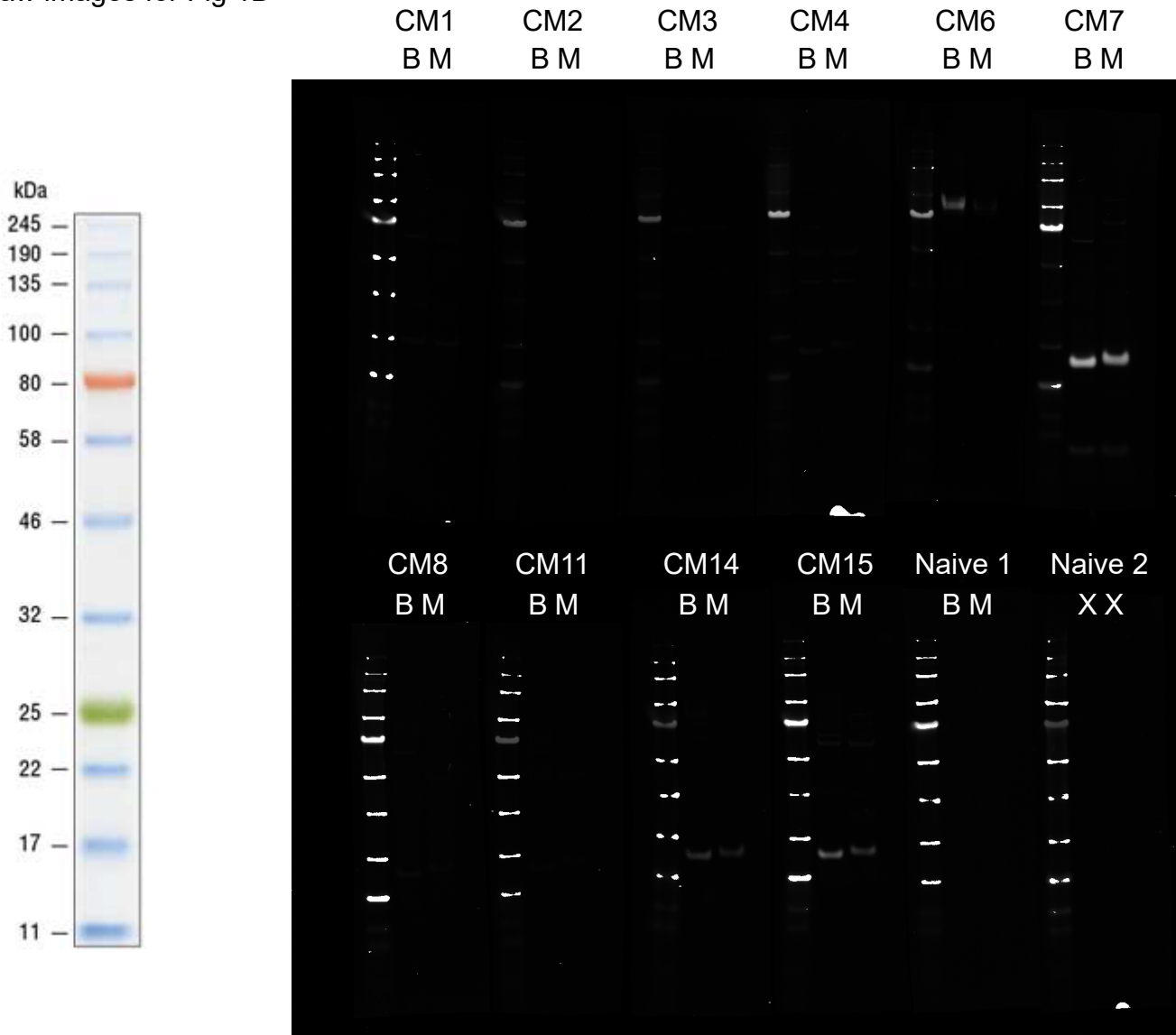


Raw images for Fig 1D



TA99

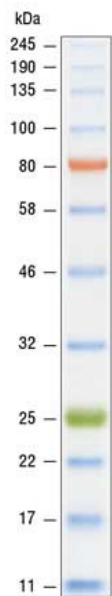
B M X X X X



B = B16F10 membrane proteins
M = MC38 membrane proteins

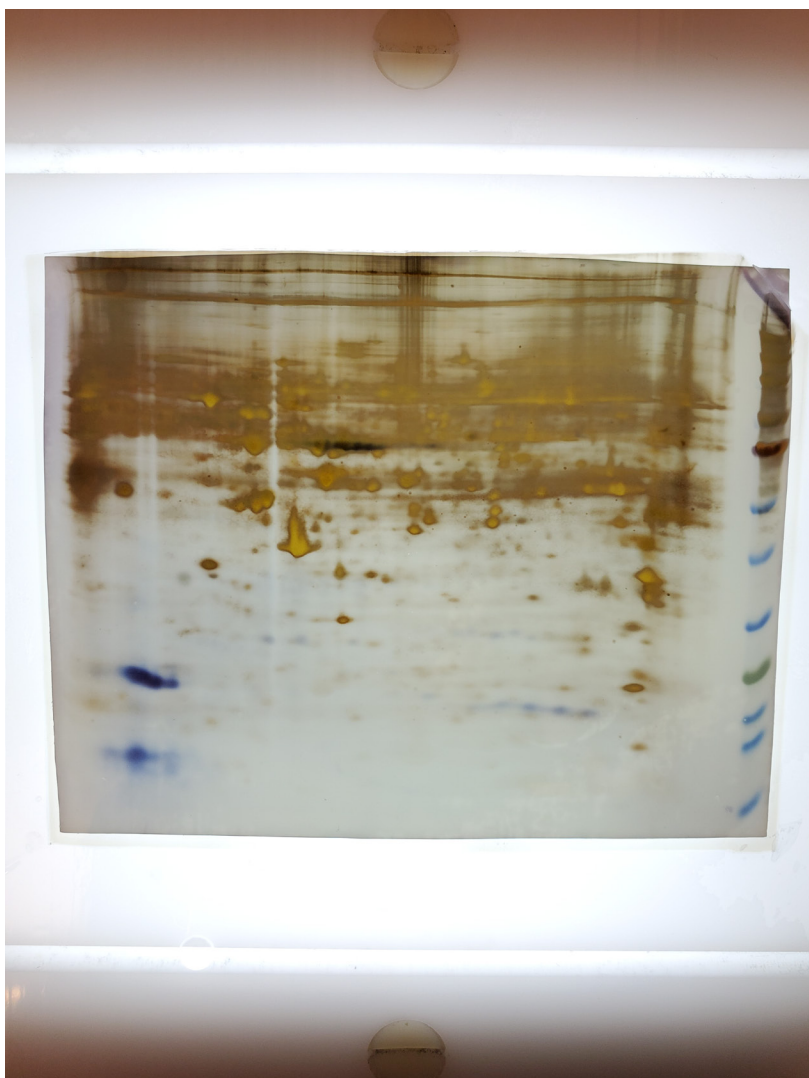
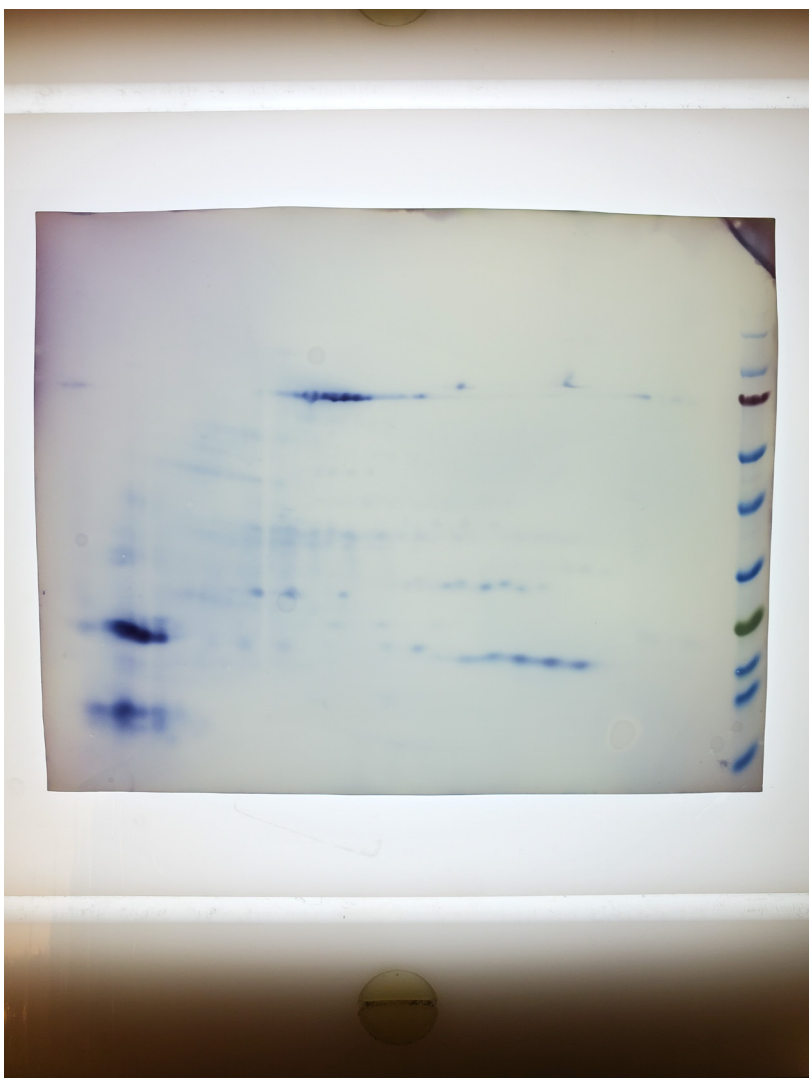
Scanned with LI-COR Odyssey 9120 Imager in 800 nm channel

Raw images for Fig 2B



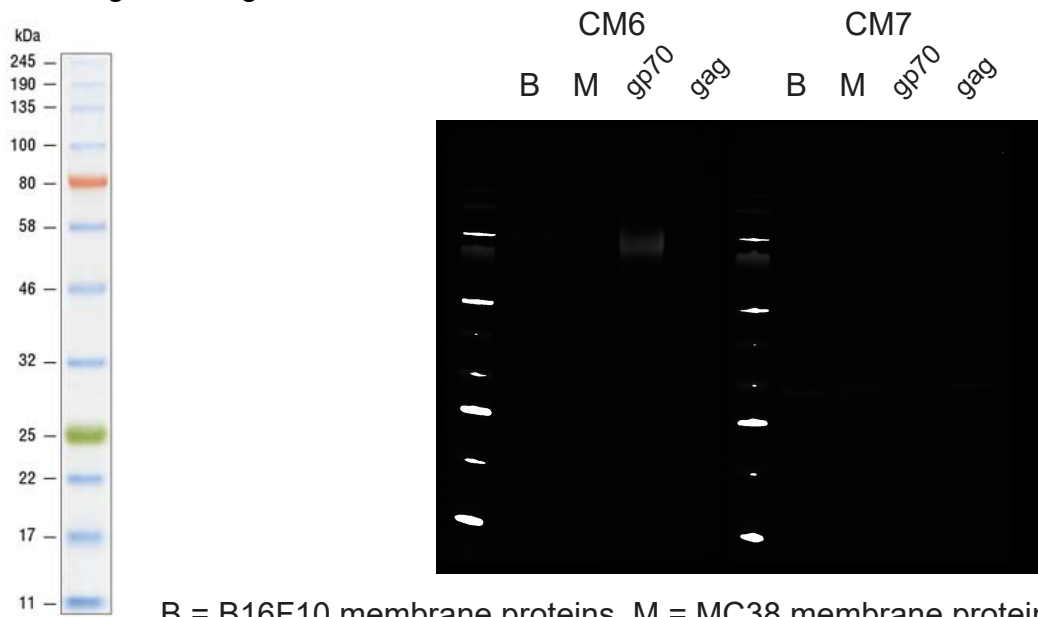
B16F10 membrane proteins and streptavidin-conjugated control proteins were probed with CM7 serum. The immunoblot was scanned with LI-COR Odyssey 9120 Imager in 700 nm (left) or 800 nm (right) channel.

Raw images for Fig 2C,D



B16F10 membrane proteins and streptavidin-conjugated control proteins were probed with CM7 serum. The immunoblot and the gel were imaged with Samsung SM-G973U.

Raw images for Fig 3A

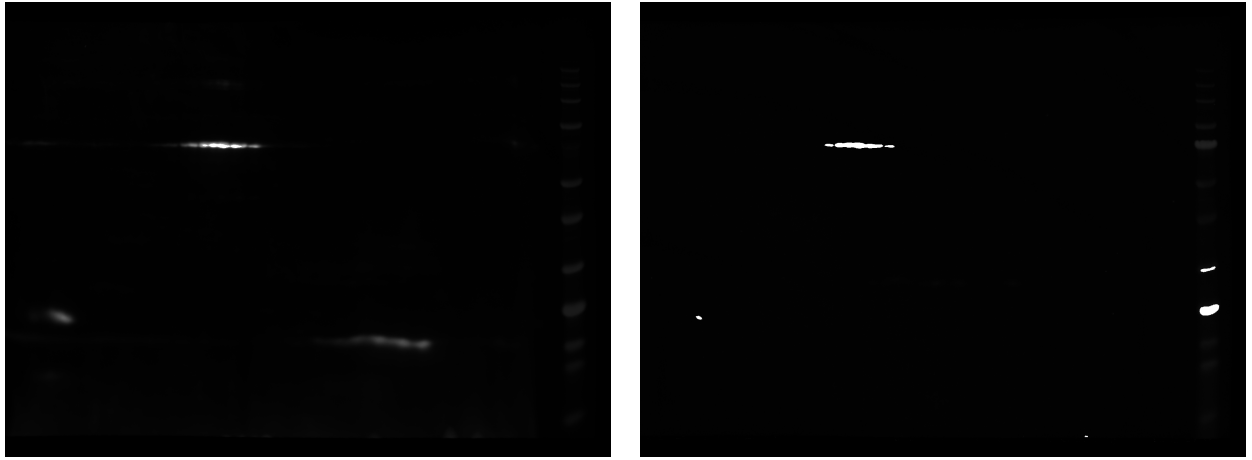
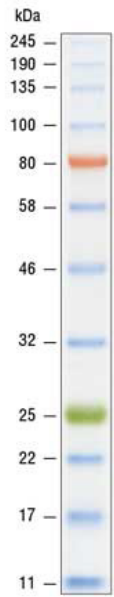


B = B16F10 membrane proteins, M = MC38 membrane proteins

Indicated samples were probed with CM6 (left) and CM7 (right) serum.

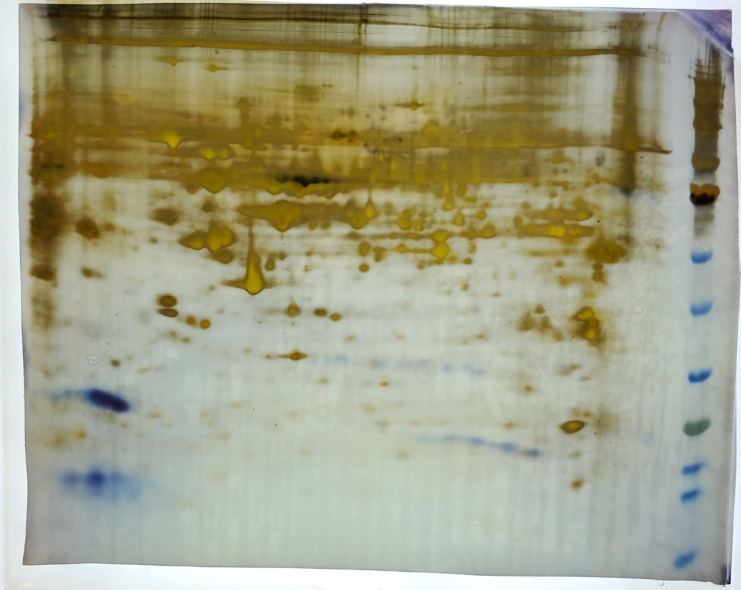
The immunoblot was scanned with LI-COR Odyssey 9120 Imager in 800 nm channel.

Raw images for S2A Fig



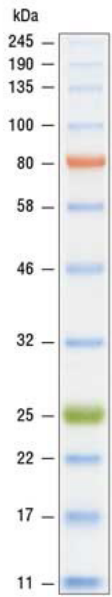
MC38 membrane proteins and streptavidin-conjugated control proteins were probed with CM7 serum. The immunoblot was scanned with LI-COR Odyssey 9120 Imager in 700 nm (left) or 800 nm (right) channel.

Raw images for S2B,C Fig



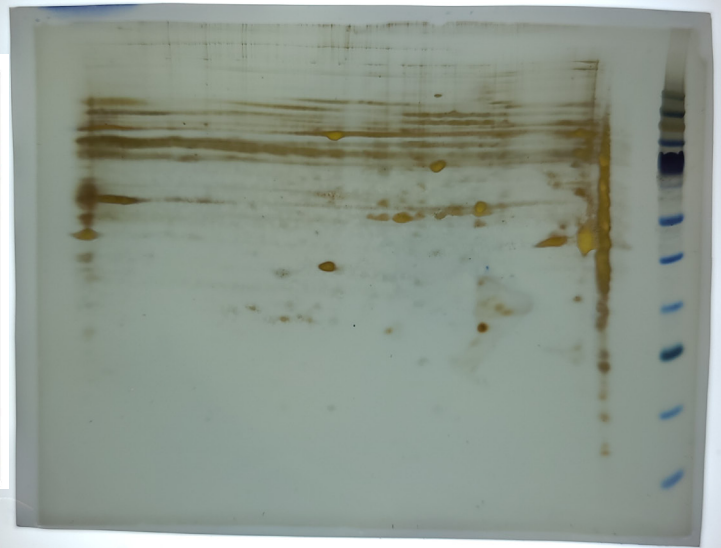
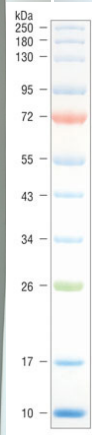
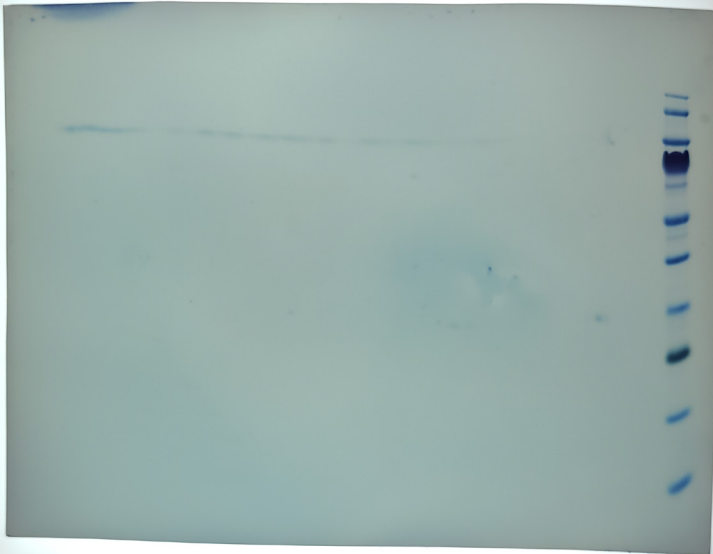
MC38 membrane proteins and streptavidin-conjugated control proteins were probed with CM7 serum. The immunoblot and the gel were imaged with Samsung SM-G973U.

Raw images for S3A Fig



B16F10 membrane proteins and streptavidin-conjugated control proteins were probed with CM6 serum. The immunoblot was scanned with LI-COR Odyssey 9120 Imager in 800 nm channel.

Raw images for S3B,C Fig



B16F10 membrane proteins and streptavidin-conjugated control proteins were probed with CM6 serum. The immunoblot and the gel were imaged with Samsung SM-G981U.