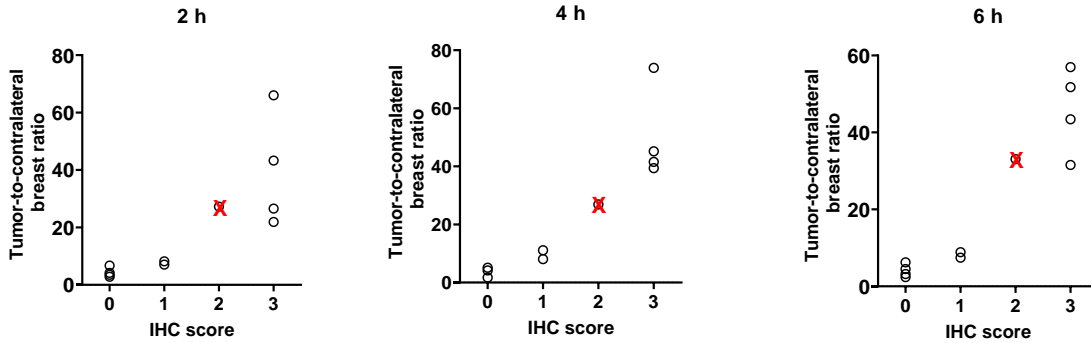
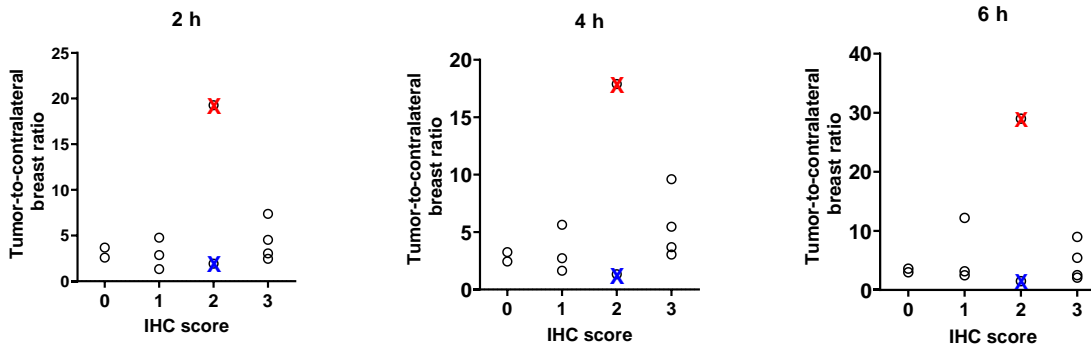


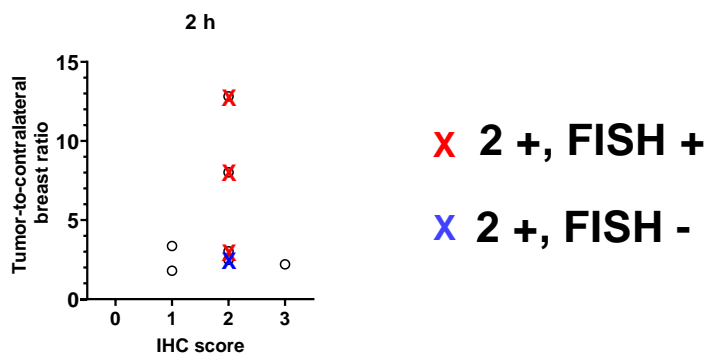
Injected dose 500 μg



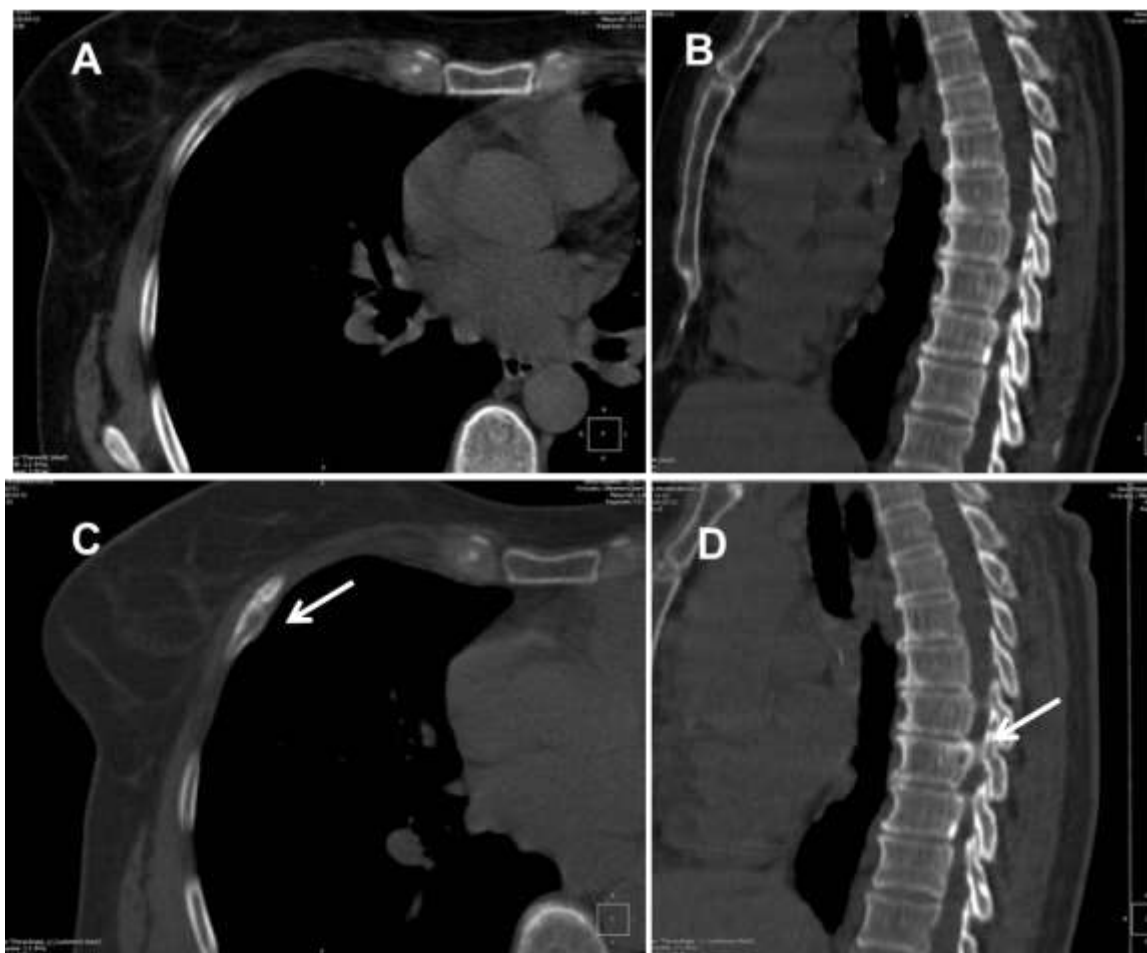
Injected dose 1000 μg



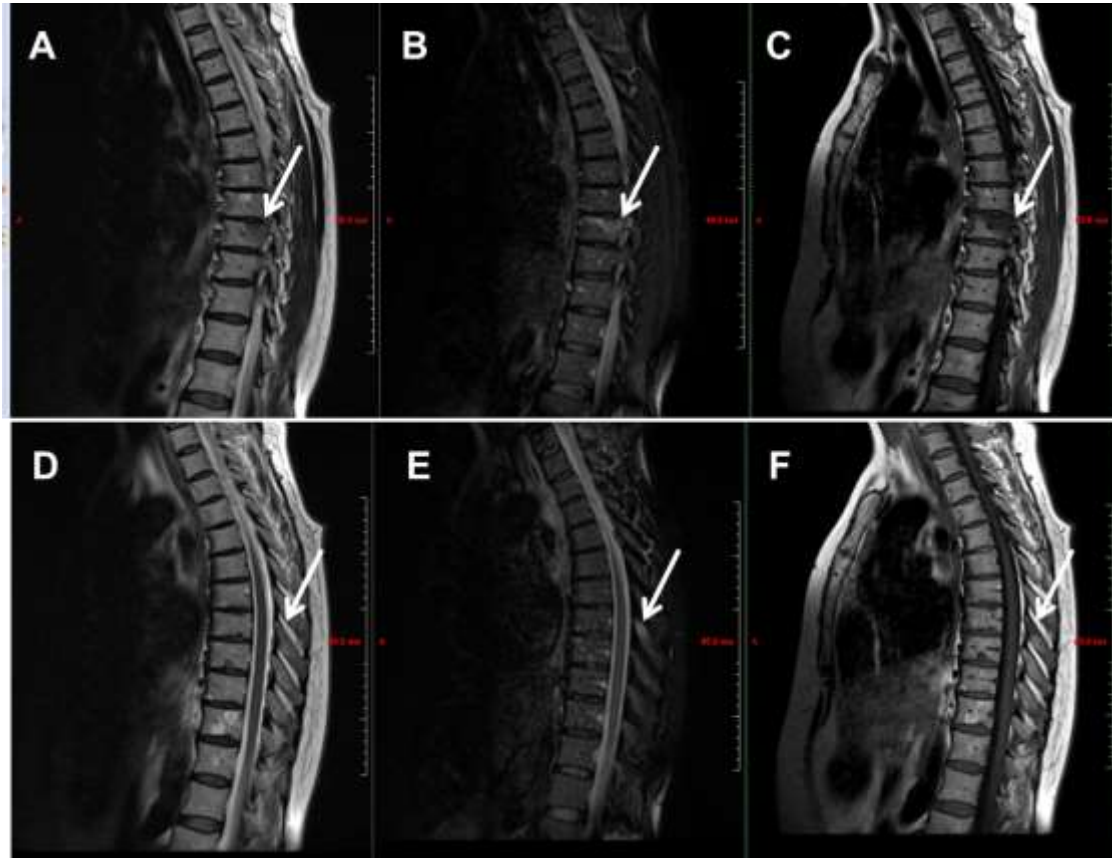
Injected dose 250 μg



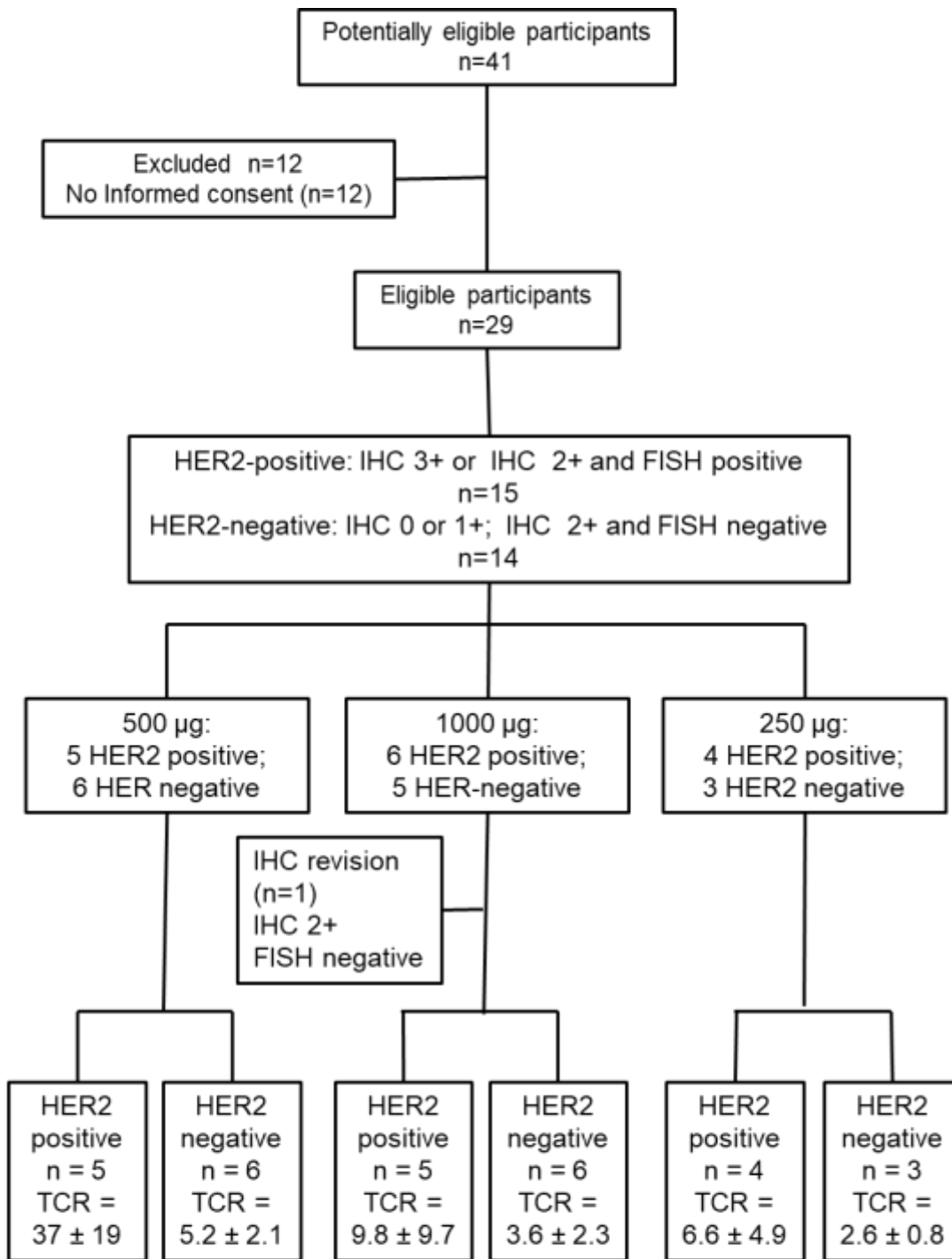
Supplemental Fig. 1. Relation between data concerning expression of HER2 in biopsy samples and tumor-to-contralateral breast ratios at 2 h after injection of 250 μg , and 2, 4 and 6 h after injection of 500 and 1000 μg $^{99\text{m}}\text{Tc}$ -ADAPT6. Red crosses mark data for FISH-positive tumors with IHC score 2+, blue crosses mark data for FISH-negative tumors with IHC score 2+, .



Supplemental Fig. 2. CT scans of patient 5 at admission (A and B) and during follow-up (C and D). The follow-up scan show in front section of right rib 5 (C) an area of lytic destruction with expansion and sclerotic contours (6 x 13 mm). In the right posterior sector of the body Th9 (D) there is a lesion of 9x11 mm with destruction of the cortical plate and a sclerosis zone



Supplemental Fig. 3. Patient 5 magnetic resonance imaging at admission: T2WI (A, D); T2WI with fat suppression (B, E); T1WI (C, F). (A, B, C). Lesion in Th9 body. (D, E, F) Lesion in the spinous process of Th8.



TCR = tumor-to-contralateral site ratio 2 h after injection

Supplemental Fig. 4. Study overview.