

On-line Table: Relations between FT-segmented parameters and patient-specific factors^a

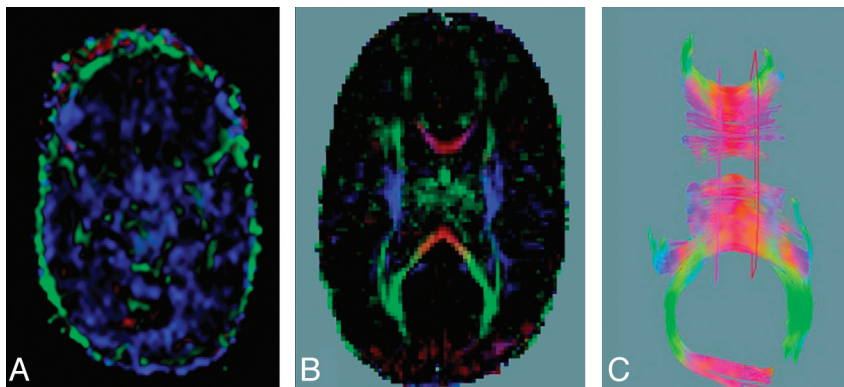
| Covariate/Factor | GA | | PMA | | HC | | WM Score | | Sex |
|---------------------------|--------|-------------------|--------|-------------------|-------|-------------------|----------|-------------------|-------------------|
| | a1 | P | a2 | P | a3 | P | a4 | P | P |
| CC bundle volume | 546 | .001 ^b | — | — | 903 | .000 ^b | −681 | .000 ^b | — |
| CC FA | — | — | 0.005 | .004 ^b | 0.003 | .052 | −0.003 | .038 ^c | — |
| CC CI | — | — | 0.003 | .004 ^b | 0.003 | .002 ^b | −0.002 | .001 ^b | — |
| CC MD | — | — | −0.017 | .035 ^c | — | — | 0.018 | .001 ^b | — |
| CC axial diffusivity | — | — | — | — | — | — | 0.020 | .010 ^c | — |
| CC radial diffusivity | — | — | −0.019 | .007 ^b | — | — | 0.017 | .003 ^b | — |
| CC bundle length | 1.822 | .000 ^b | — | — | 1.42 | .006 ^b | −1.30 | .001 ^b | .010 ^c |
| PLIC L bundle volume | — | — | 232 | .014 ^c | — | — | — | — | — |
| PLIC L FA | −0.006 | .007 ^b | 0.010 | .001 ^b | — | — | — | — | — |
| PLIC L CI | — | — | 0.004 | .001 ^b | — | — | — | — | — |
| PLIC L MD | 0.014 | .006 ^b | −0.20 | .003 ^b | — | — | 0.014 | .002 ^b | — |
| PLIC L axial diffusivity | 0.016 | .010 ^b | −0.018 | .019 ^c | — | — | 0.017 | .001 ^b | — |
| PLIC L radial diffusivity | 0.014 | .006 ^b | −0.021 | .001 ^b | — | — | 0.012 | .004 ^b | — |
| PLIC L bundle length | — | — | — | — | — | — | — | — | — |
| PLIC R bundle volume | 229 | .006 ^b | 287 | .008 ^b | — | — | — | — | — |
| PLIC R FA | — | — | 0.008 | .005 ^b | — | — | — | — | — |
| PLIC R CI | — | — | — | — | — | — | — | — | — |
| PLIC R MD | — | — | −0.018 | .008 ^b | — | — | 0.010 | .032 ^c | — |
| PLIC R axial diffusivity | — | — | −0.018 | .017 ^c | — | — | 0.013 | .008 ^b | — |
| PLIC R radial diffusivity | — | — | −0.018 | .008 ^b | — | — | — | — | — |
| PLIC R bundle length | 0.82 | .023 ^c | — | — | 0.895 | .022 ^c | — | — | — |

Note:— Dash indicates “not significant”.

^a Investigated using a general linear model with equation DTI parameter = a1 * GA + a2 * PMA + a3 * HC + a4 * WMI + a5 * BW + f1 * Sex. For each FT parameter (rows), the slope (a1-a4) is given. For the factor, no slope is given, only the P value. The P value is shown for the influence of the patient factors and covariates (columns) with P < .01 or P < .05. No value indicates no significant influence; then, no slope is given. BW had no significant role in the model and was, therefore, not displayed in this Table.

^b P < .01.

^c P < .05.



On-Line Figure. Examples of artifacts leading to exclusion of the dataset. *A*, DTI image artifacts due to motion artifacts. The color map displays a completely wrong color. *B*, DTI artifacts due to sensitivity encoding artifacts. The color map displays a large red area posterior. *C*, Artifactual fibers. Errors in FT, resulting in fibers in areas with artifacts.