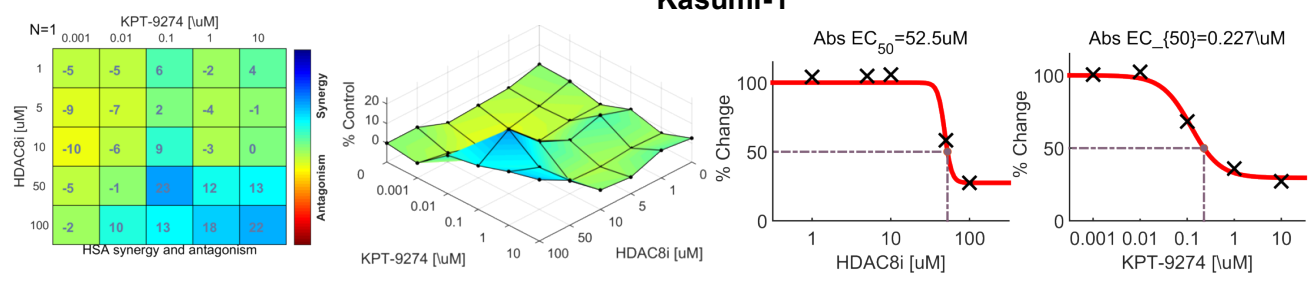
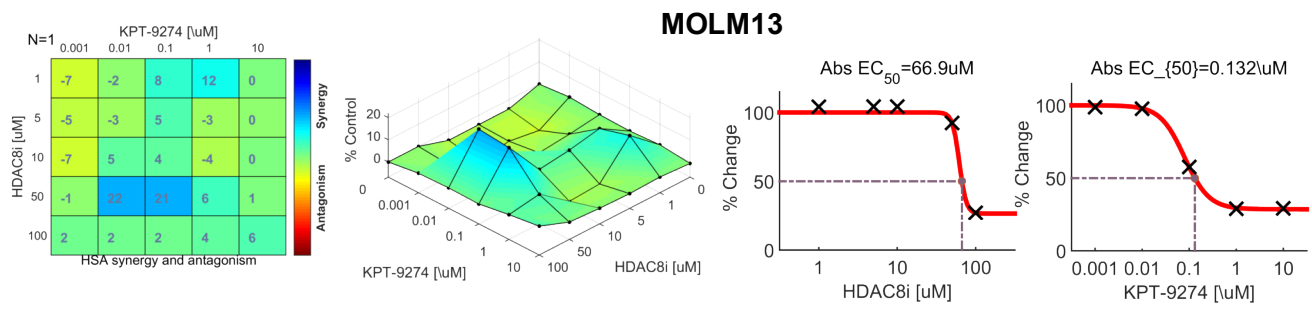
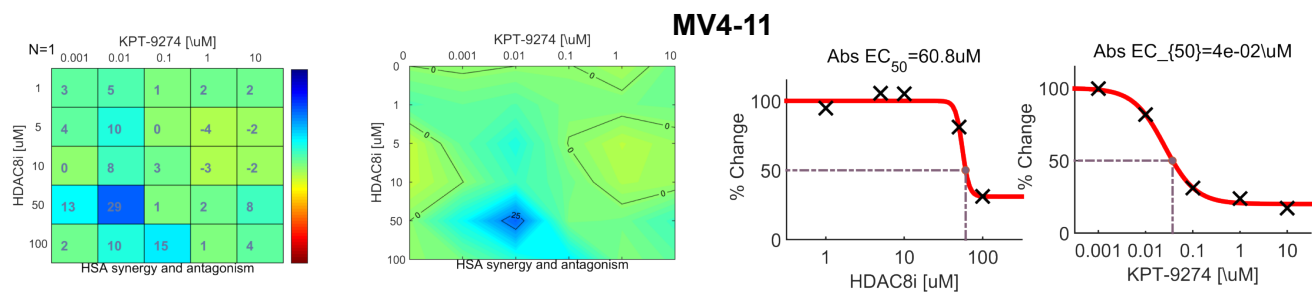
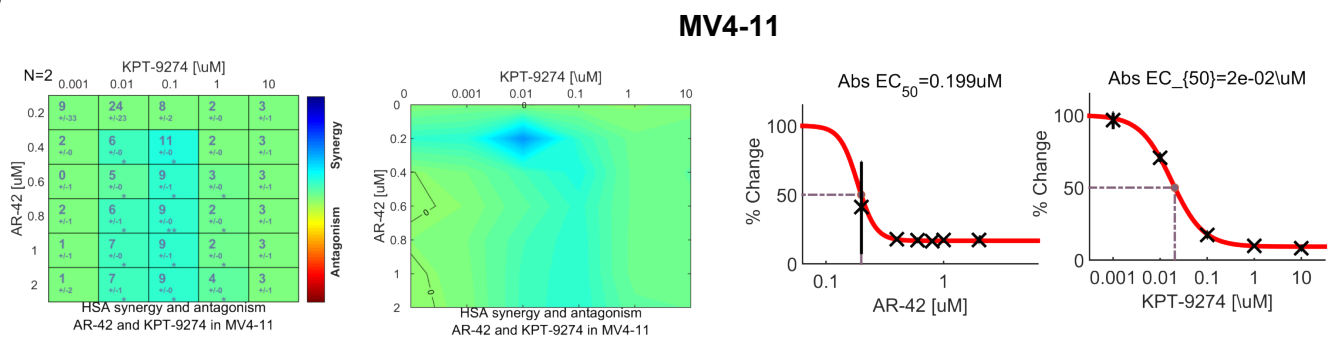
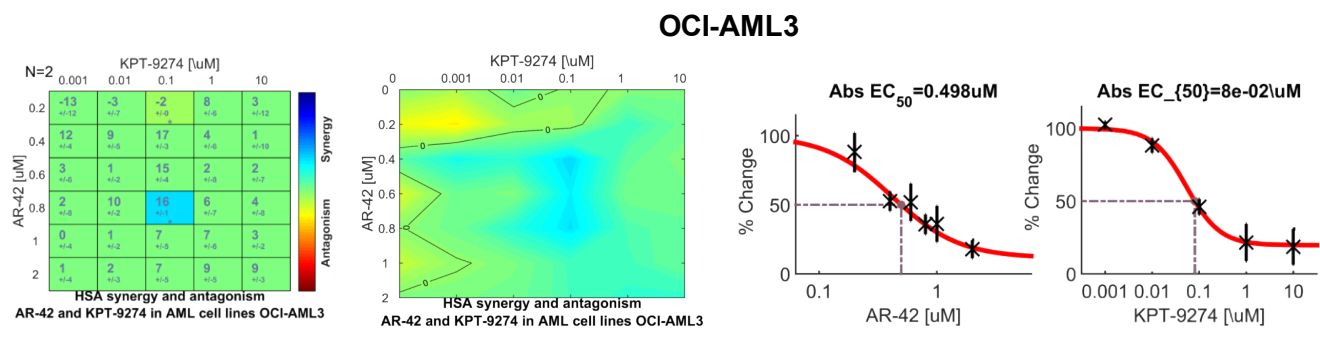


**A****B****C****D****E**

**Supplementary Figure S2. HDAC8-specific inhibitor (PCI-34051) or AR-42 treatments sensitize AML cell lines to KPT-9274 treatment. A-C) A) Kasumi-1, B) MOLM13 and C) MV4-11 cells were treated with different dosages of PCI-34051 for 24 hours before receiving KPT-9274 for 48 hours. MTS was added to the plate to assess mitochondria metabolism. The results were analyzed with Combenefit to quantify synergy levels of HDAC8i/NAMPTi pairwise combinations. The synergy scores were calculated based on the HSA model and shown in matrices. n=1. D-E) D) MV4-11 and E) OCI-AML3 cells were treated with pairwise combinations of doses of AR-42 and KPT-9274 for 48 hours. MTS was added to the plate to assess mitochondria metabolism. The results were analyzed with Combenefit to quantify synergy levels. The synergy scores were calculated based on the HSA model and shown in matrices. n=2.**