

## **Supplementary Materials**

**Supplementary Figure 1:** Frequency of Mutations

**Supplementary Figure 2:** One-Year Cumulative Incidence of Cancer-Associated Venous Thromboembolism by Mutation Type Stratified by Tumor Type\*

\*Two tumor types with the highest mutation frequencies used for each gene

**Supplementary Figure 3:** mRNA Expression Z-scores Relative to All Samples for F3 (A) and CSF3 (B) for Patients With vs Without a STK11 Mutation\*

\*Data from TCGA Pan-Cancer Atlas, all samples are from adenocarcinoma of the lung, n=503.

**Supplementary Figure 4:** Cumulative Incidence of Cancer-Associated Venous Thromboembolism by Clonal Hematopoiesis Status

PanCan PD: pan-cancer, putative driver clonal hematopoiesis

CH: clonal hematopoiesis

**Appendix A:** Flow of Patient Selection

**Appendix B:** Selected Radiology Procedures

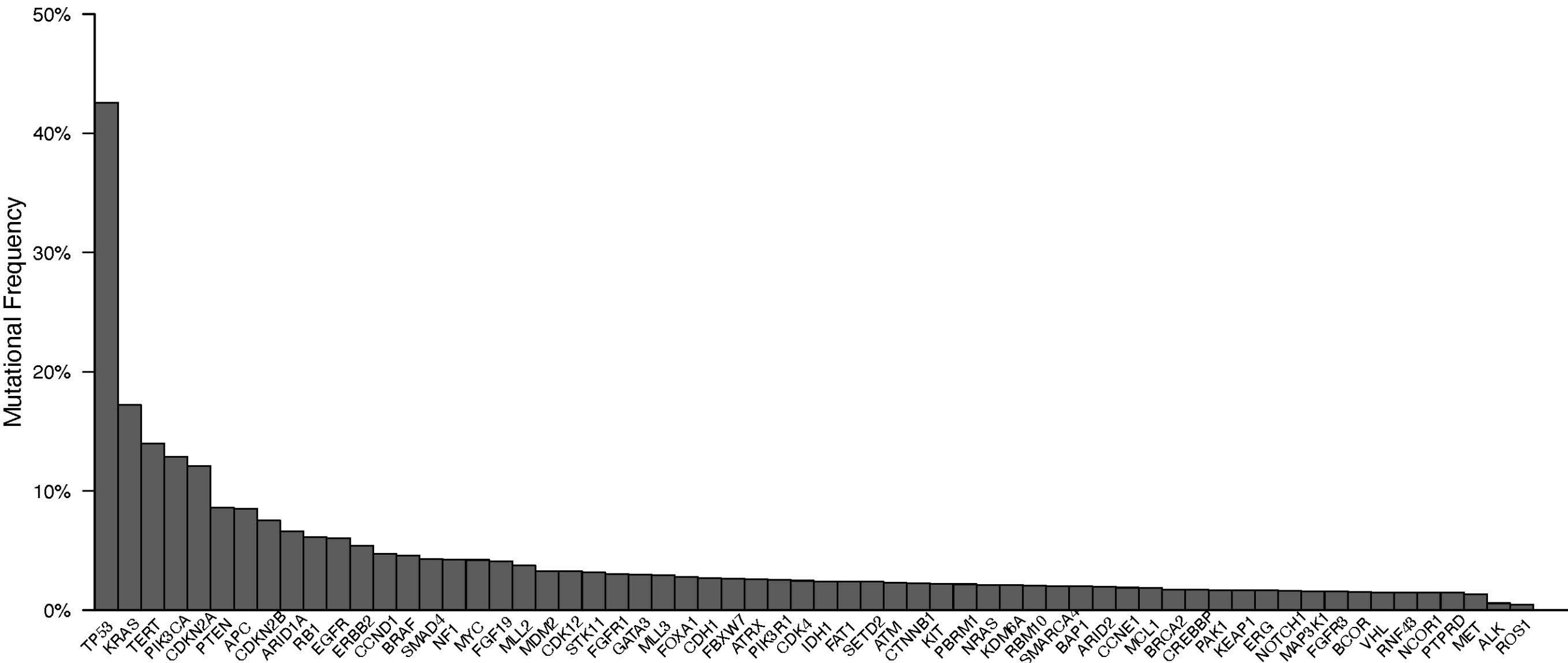
**Appendix C:** Keywords Used for Text Search of Radiology Reports

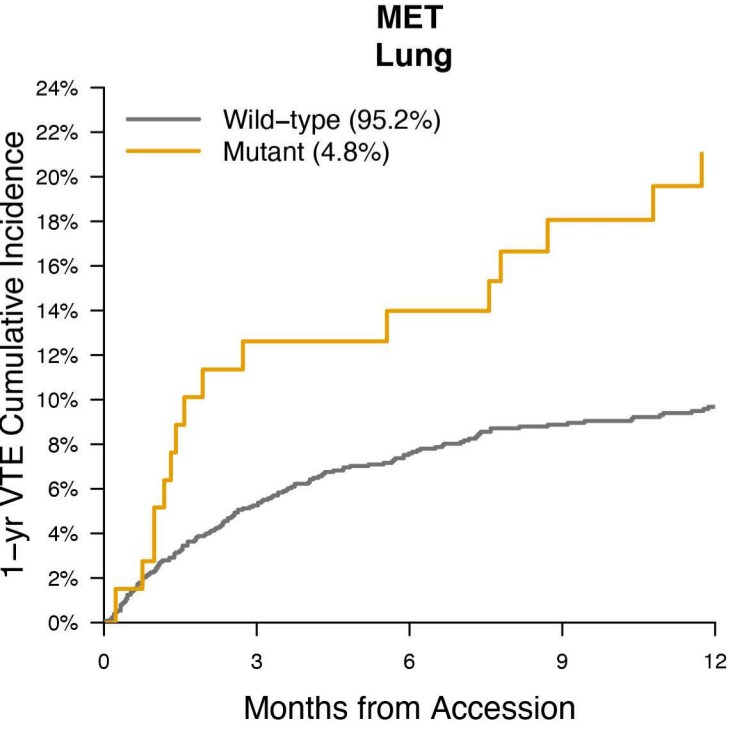
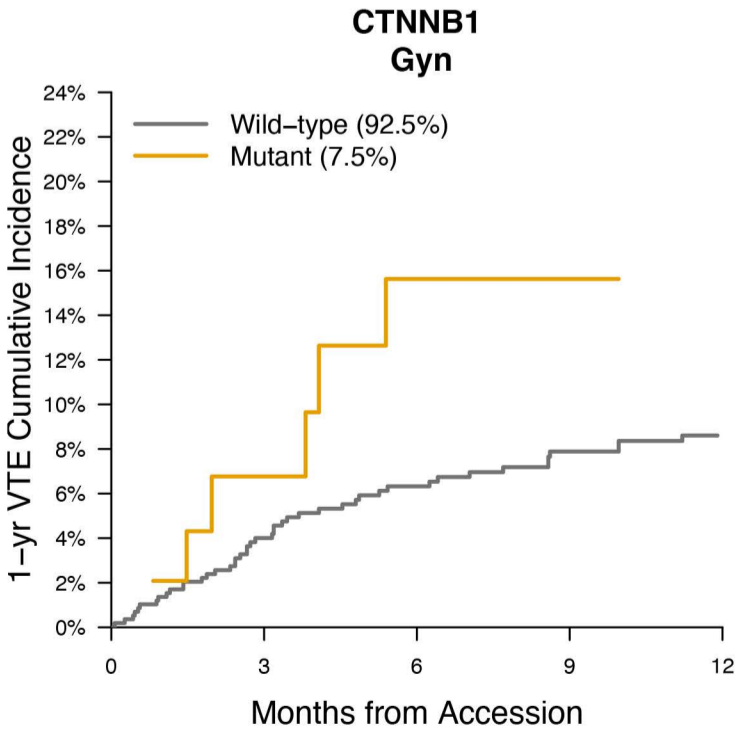
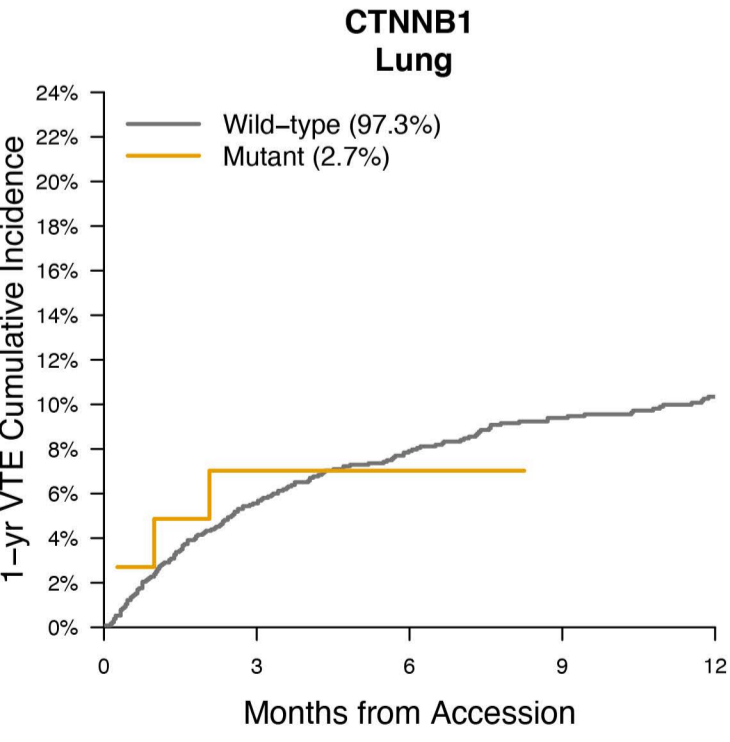
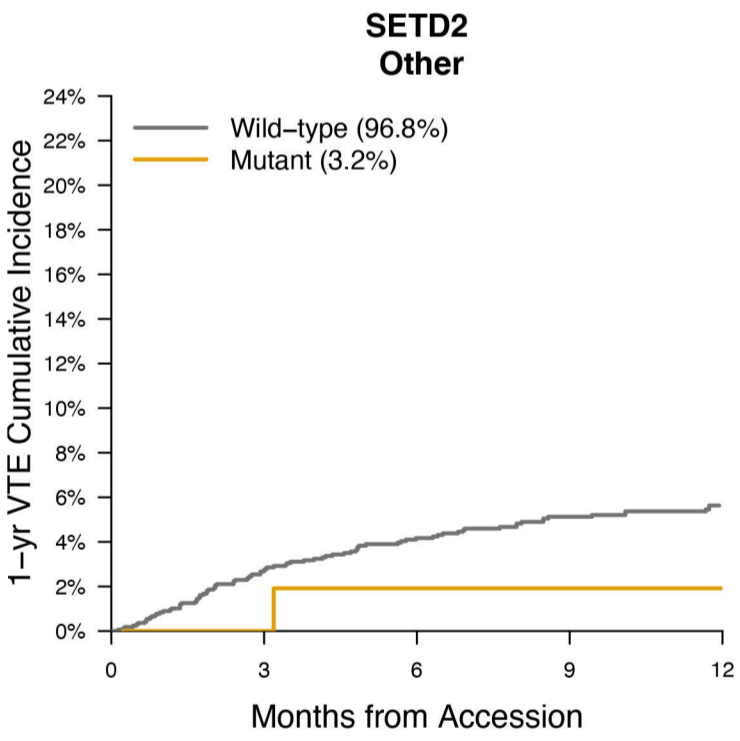
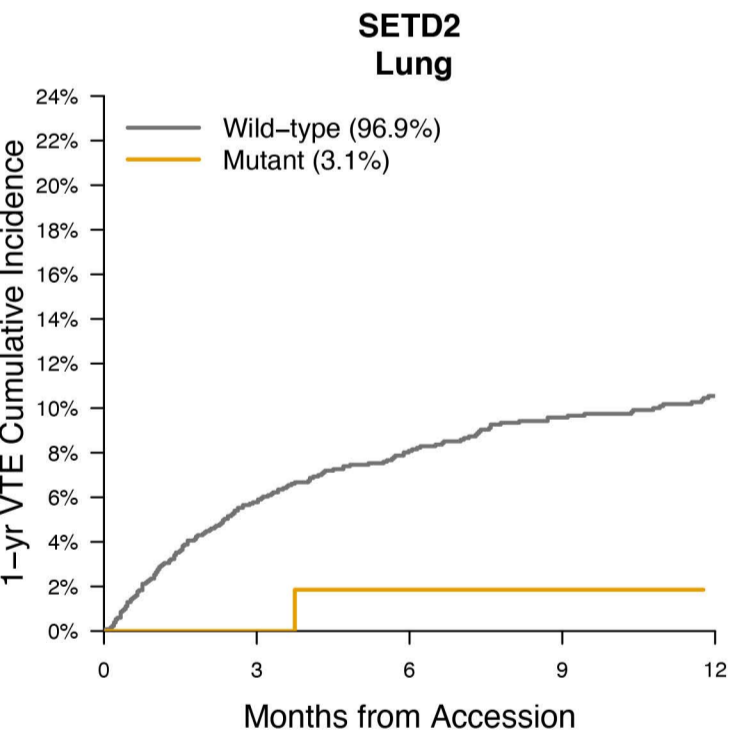
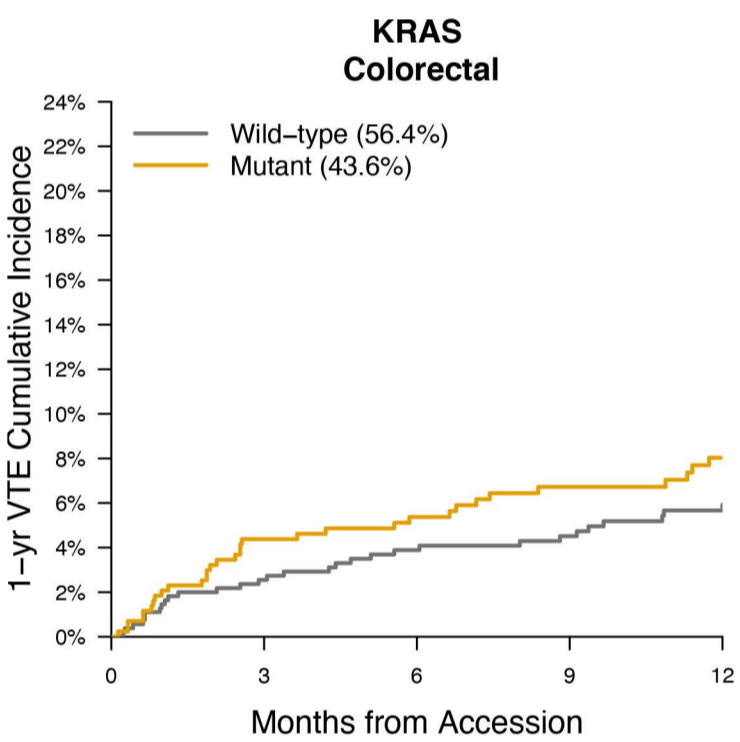
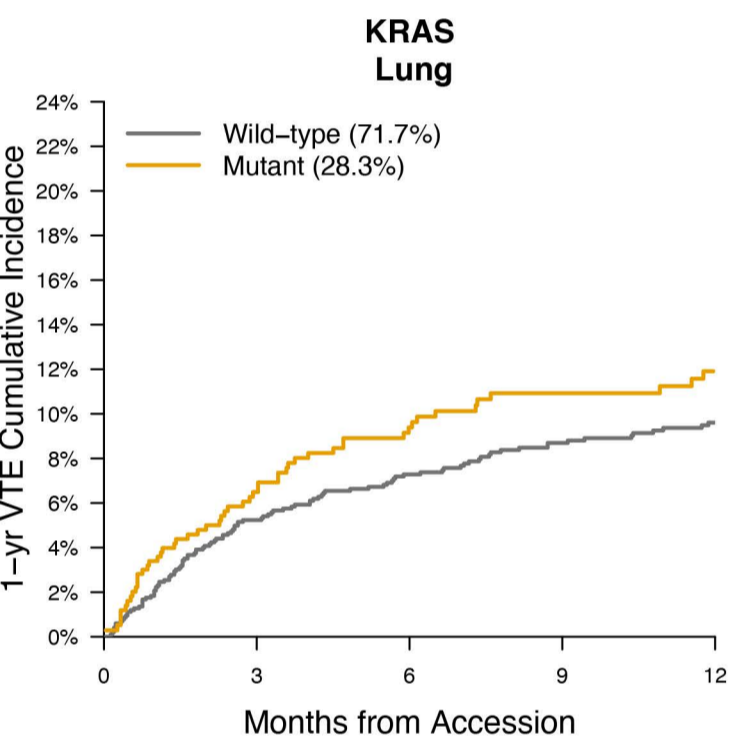
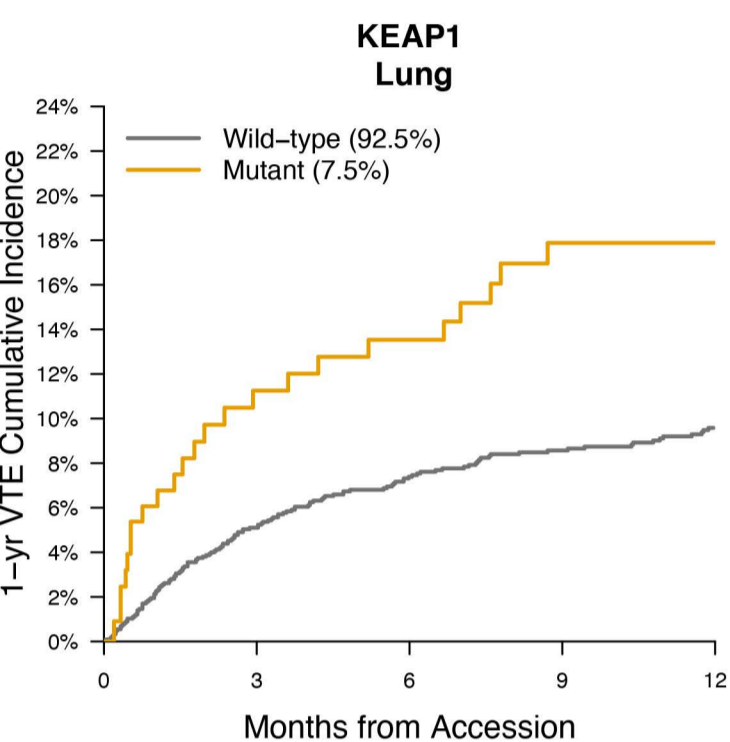
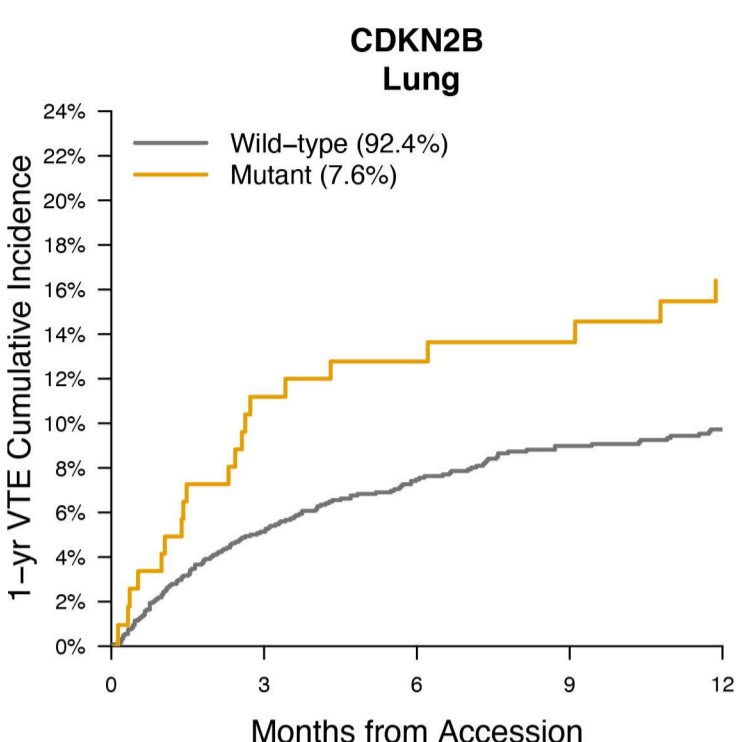
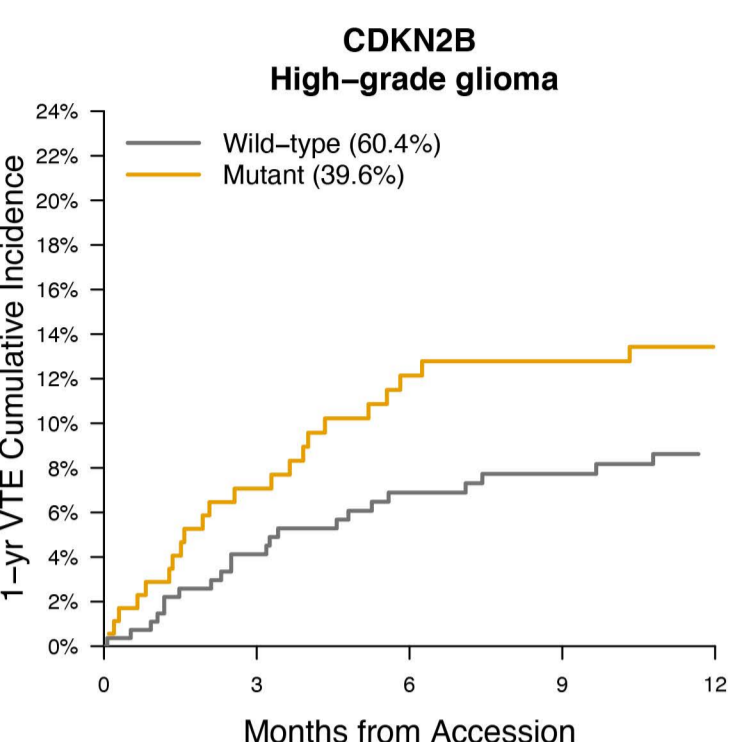
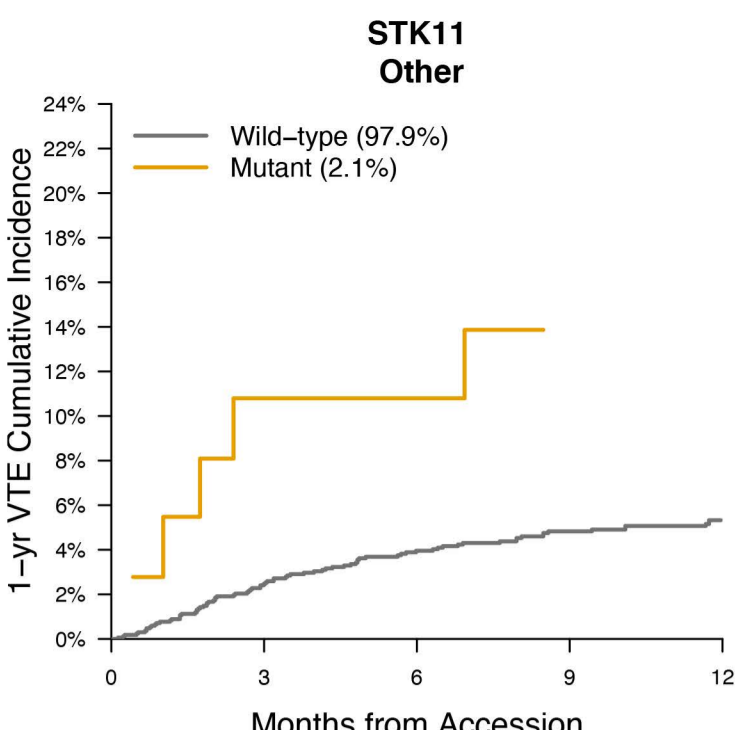
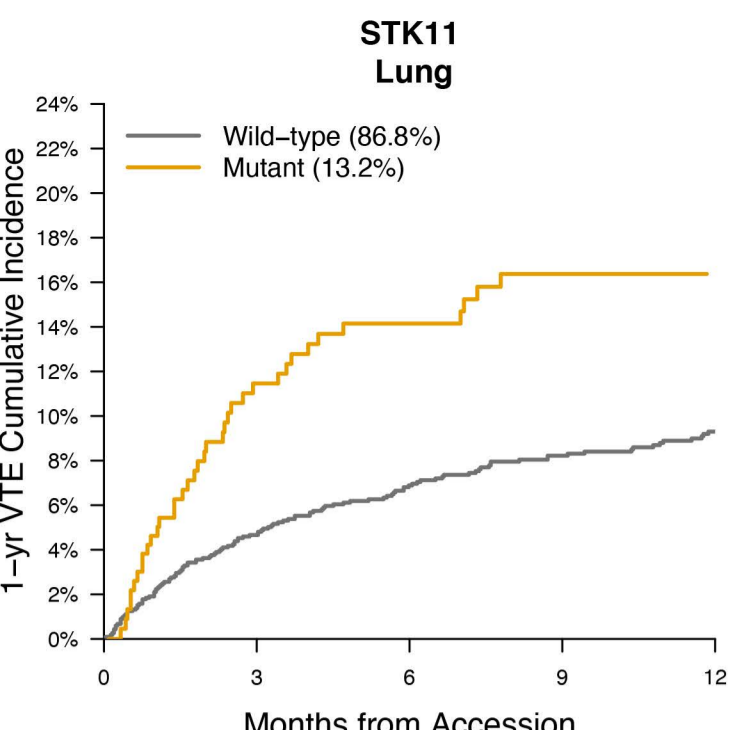
**Appendix D:** Anticoagulant Doses

**Appendix E:** Cancer Type Mapping

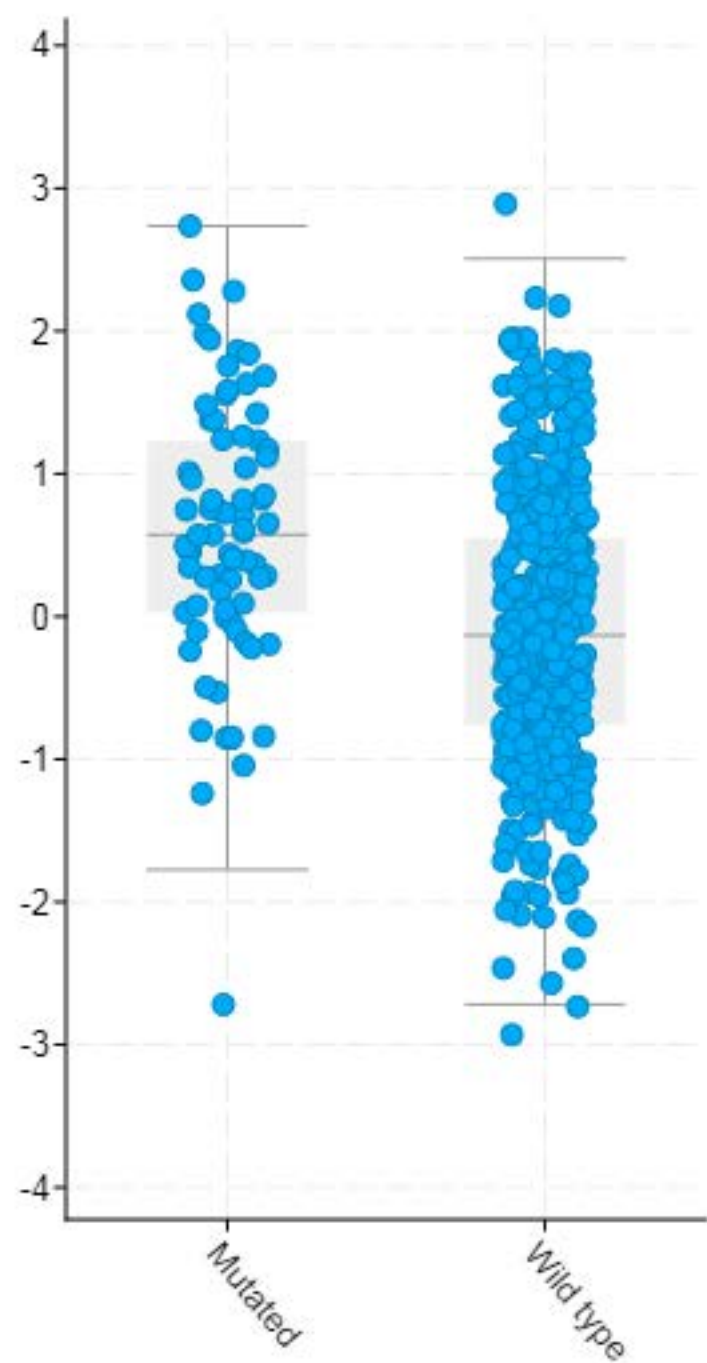
**Appendix F:** Metastatic Marker Mapping

**Appendix G:** IMPACT Gene List





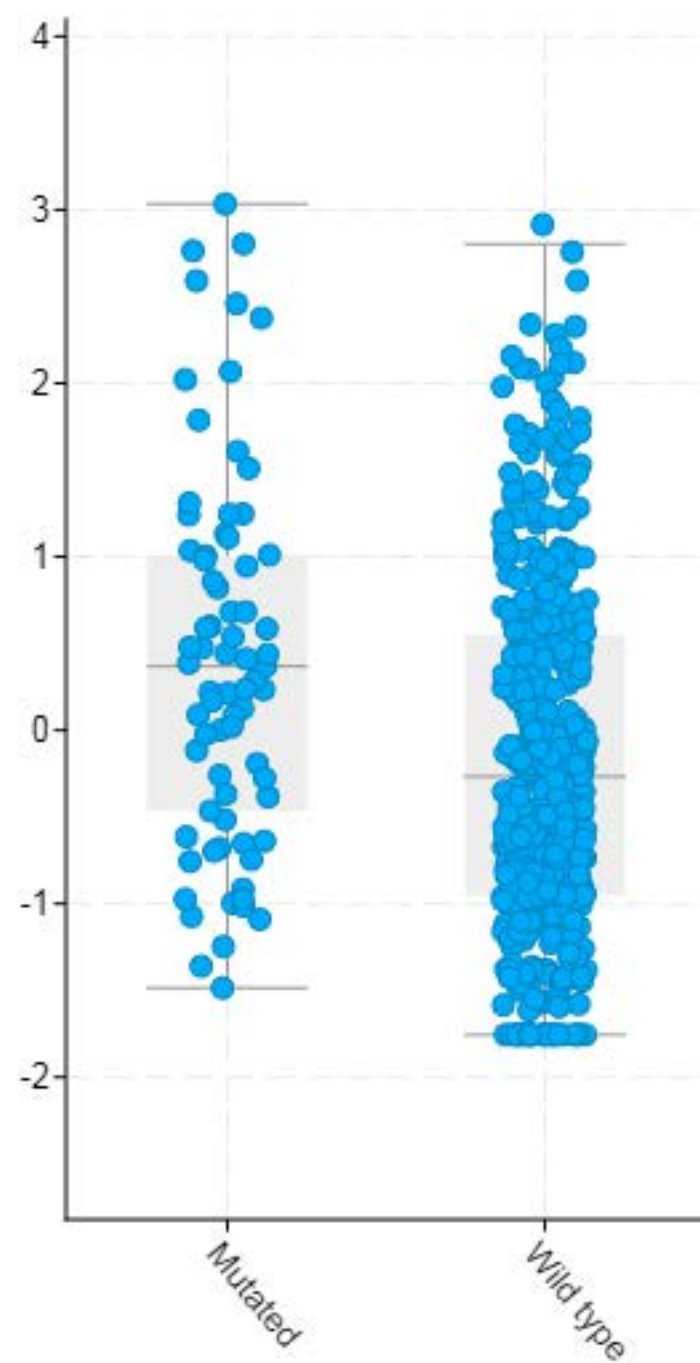
F3: mRNA expression z-scores relative to all samples (log RNA Seq V2 RSEM)



**A**

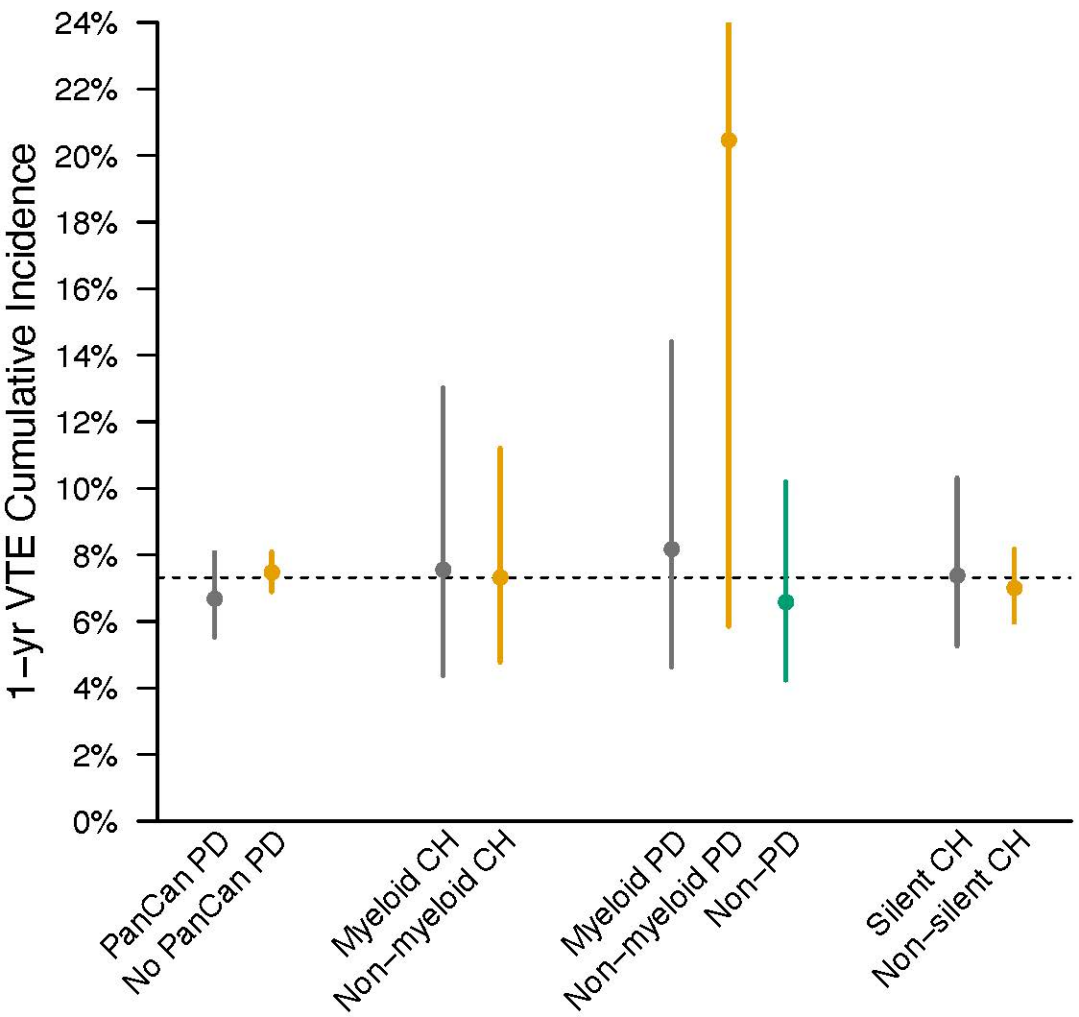
STK11: Mutations

CSF3: mRNA expression z-scores relative to all samples (log RNA Seq V2 RSEM)

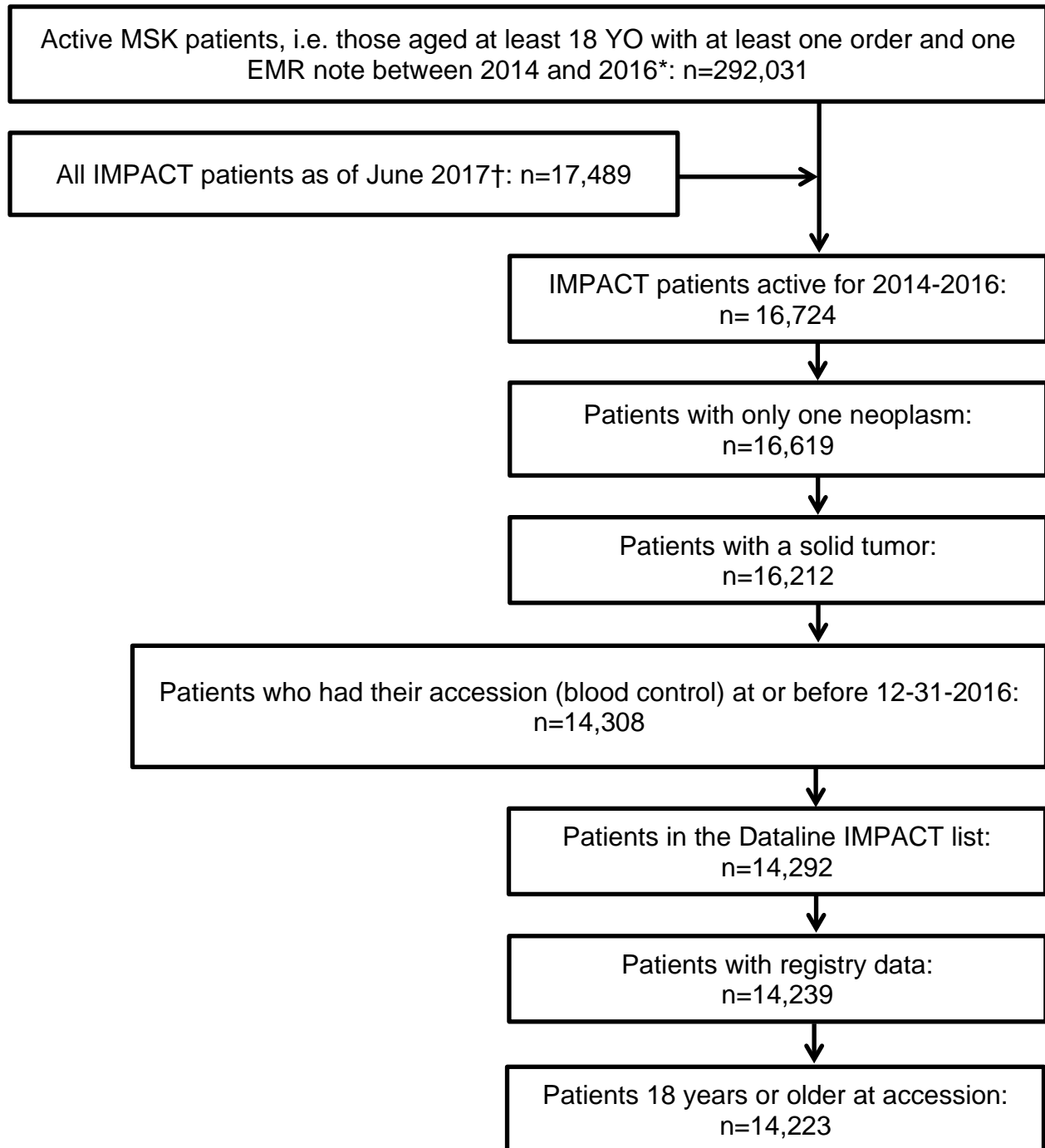


**B**

STK11: Mutations



## Flow of Patient Selection



\*File dated 6-07-2017

†File dated 6-14-2017

## Definition of a Therapeutic Dose of Anticoagulant

Enoxaparin >30 mg BID or >40 mg daily

Dalteparin >5,000 IU dose

Unfractionated heparin continuous IV infusion

Rivaroxaban >10 mg dose

Apixaban >2.5 mg dose

Dabigatran >110 mg dose

(there were no instances of edoxaban administration)