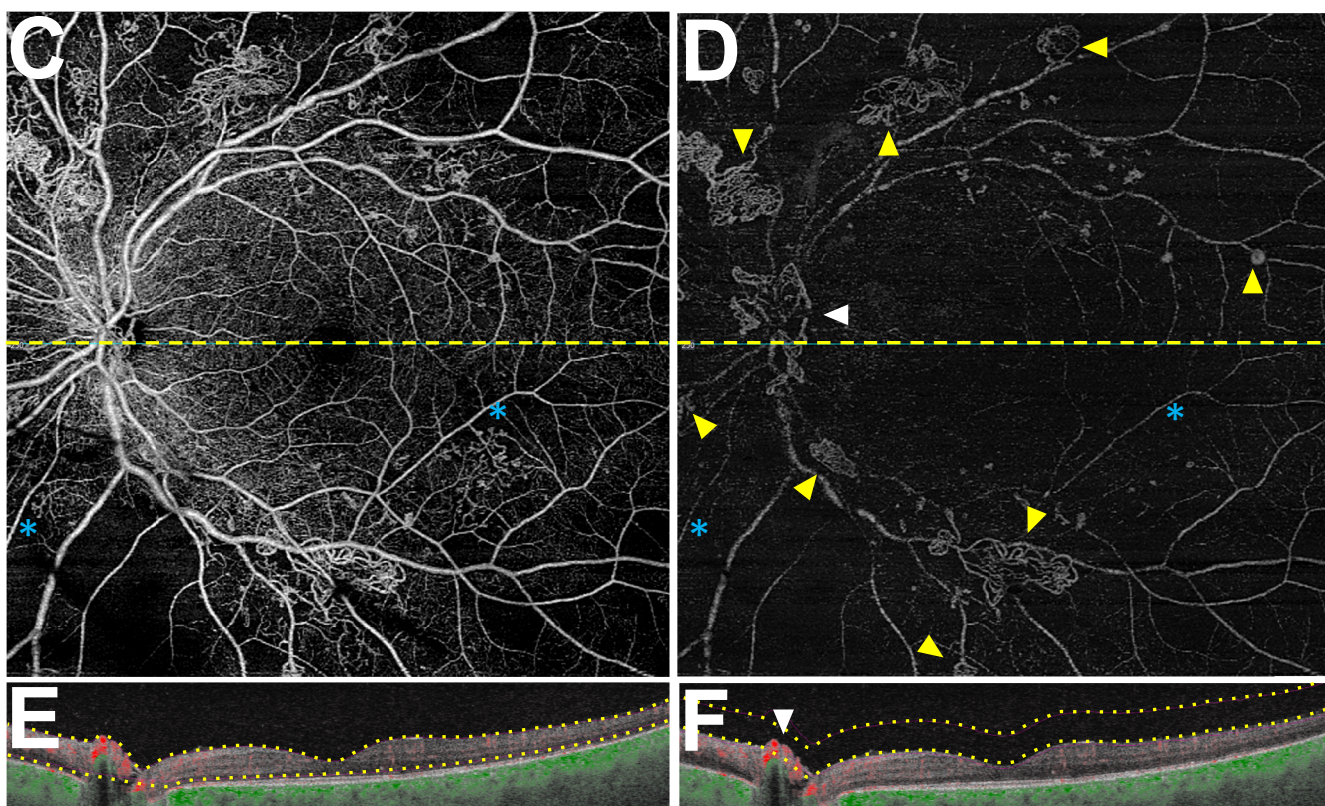
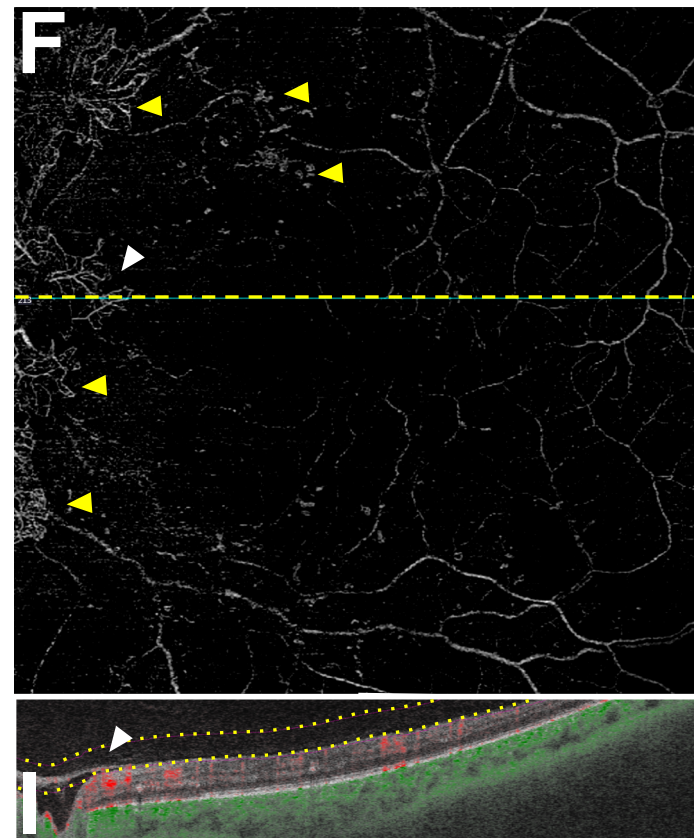
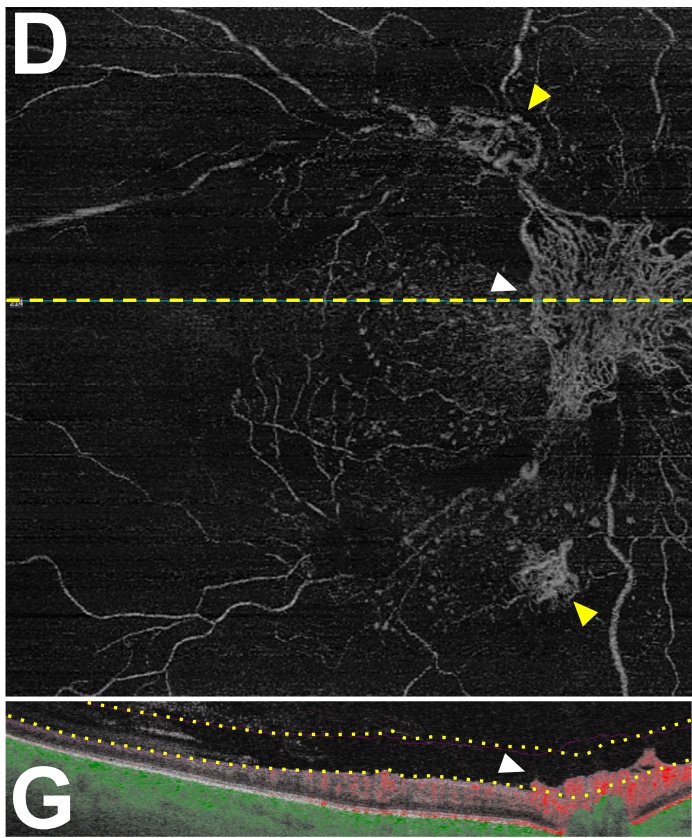


OCTA Training

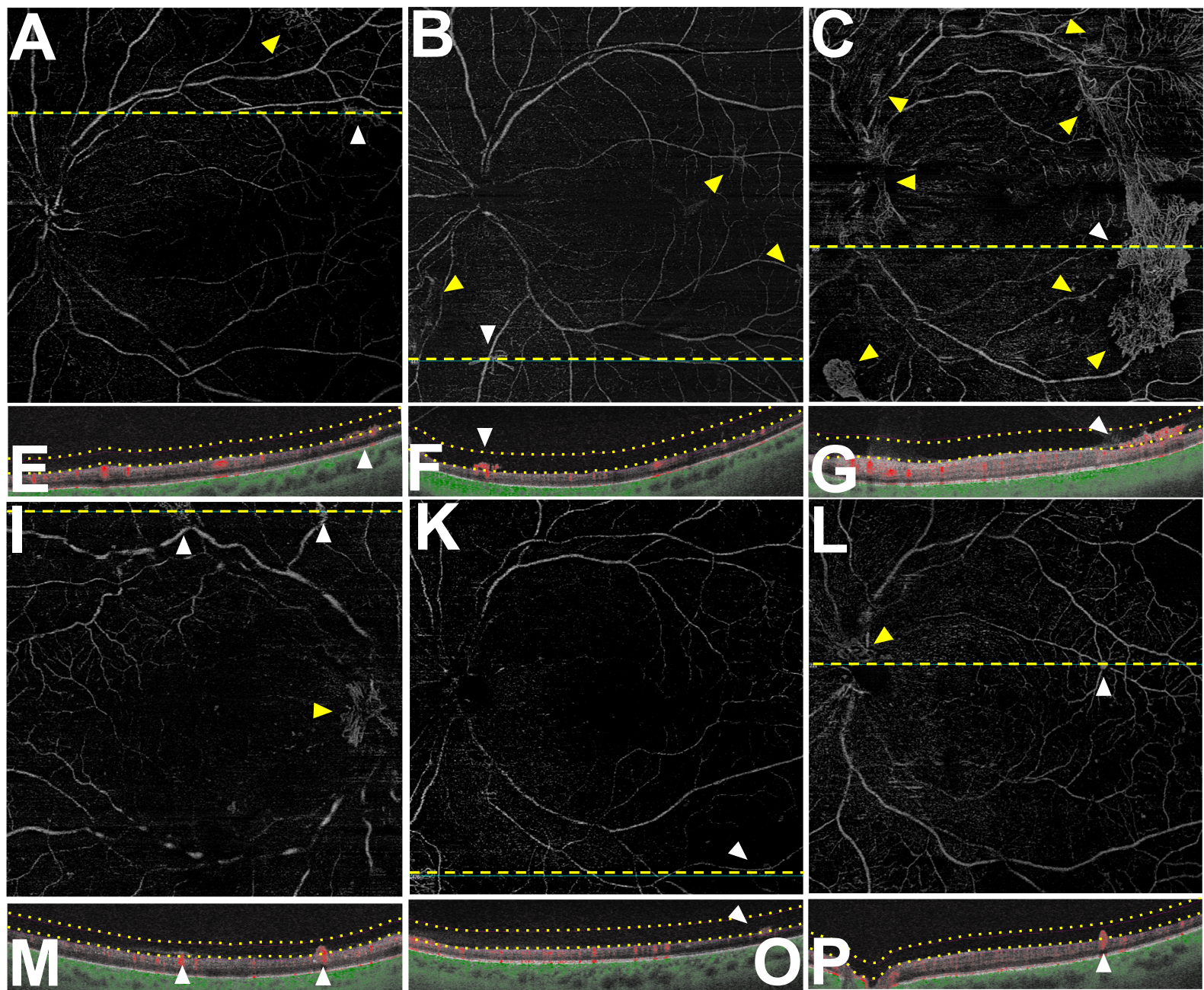
- The next four slides highlight examples of NVE and IRMA on OCTA



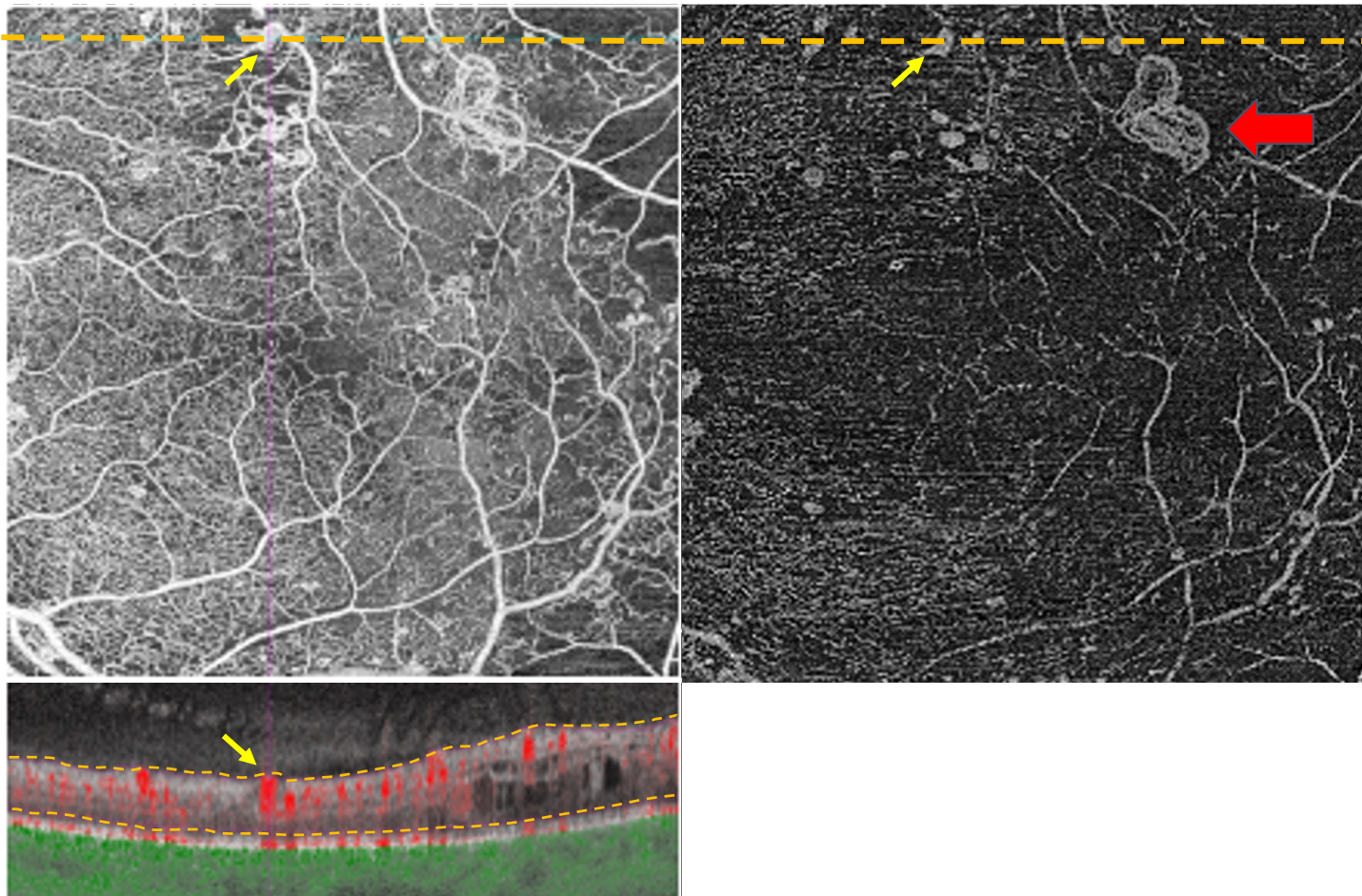
- Panel C is the total retinal slab. The corresponding Bscan (Panel E) is cut through the yellow lines in Panel C.
- Panel D is the vitreoretinal interface slab (VRI). The corresponding Bscan (Panel F) is cut through the yellow lines in Panel D
- The **white arrow** in the VRI slab (D) points to NVD which can be seen on the Bscan (F) extending into the vitreous with obvious red signal (indicating flow)
- The **yellow arrows** are highlighting **NVE on the VRI slab (D)**
- The **blue asterisks on Panel C** highlight IRMA. Though these might initially appear to be NV, these vessels are not present on the VRI slab (blue asterisks in D)



- Panels D and F are VRI slabs with their corresponding Bscans (G and I, respectively)
- The white arrowheads in D and F indicate areas of NVD.
 - Note that in the Bscans, the NV can be seen extending into the hyaloid with a flow signal (red)
 - This is very obvious in panel G and more subtle but still present on close inspection in panel I (may need to zoom in to see more clearly)



- These panels are all VRI slabs from different patients with corresponding Bscans below
- The white arrowheads on the VRI point to areas of NVE that correspond to NVE seen on the corresponding Bscans (the yellow arrowheads are also other areas of NV)
- Note that on the corresponding Bscans, the NVE is seen extending into the hyaloid with a flow signal (red)
 - At times, this is subtle and requires close inspection



- Sometimes it can be difficult to differentiate between IRMA and NVE.
- Here, we need to use the total retinal slab, the VRI slab, and the Bscan together.
 - In the total retinal slab, near the yellow arrowhead, we can see an area of questionable NVE.
 - Looking next at the VRI slab, it is still hard to tell if this is an NVE or just IRMA (compare to the clear NVE highlighted by the red arrow)
 - However, if we look at the same spot on the Bscan, we can see that there is no extension of the lesion above the retinal segmentation line into the hyaloid. This indicates that the lesion is more likely IRMA